

Disclaimer

The following report(s) provides findings from an FDA-initiated query using Sentinel. While Sentinel queries may be undertaken to assess potential medical product safety risks, they may also be initiated for various other reasons. Some examples include determining a rate or count of an identified health outcome of interest, examining medical product use, exploring the feasibility of future, more detailed analyses within Sentinel, and seeking to better understand Sentinel capabilities.

Data obtained through Sentinel are intended to complement other types of evidence such as preclinical studies, clinical trials, postmarket studies, and adverse event reports, all of which are used by FDA to inform regulatory decisions regarding medical product safety. The information contained in this report is provided as part of FDA's commitment to place knowledge acquired from Sentinel in the public domain as soon as possible. Any public health actions taken by FDA regarding products involved in Sentinel queries will continue to be communicated through existing channels.

FDA wants to emphasize that the fact that FDA has initiated a query involving a medical product and is reporting findings related to that query does not mean that FDA is suggesting health care practitioners should change their prescribing practices for the medical product or that patients taking the medical product should stop using it. Patients who have questions about the use of an identified medical product should contact their health care practitioners.

The following report contains a description of the request, request specifications, and results from the modular program run(s).

If you are using a web page screen reader and are unable to access this document, please contact the Sentinel Operations Center for assistance at info@sentinelssystem.org.

Overview for Request: cder_mpl1p_wp239

Request ID: cder_mpl1r_wp239_mkscnr_v01

Date Run: January 17, 2023

Request Description: In this report, we compare the frequency of procedure codes for biopsy to examine trends in code usage surrounding the October, 2015 transition from International Classification of Diseases, Ninth Revision, Procedure Coding System (ICD-9-PCS) to International Classification of Diseases, Tenth Revision, Procedure Coding System (ICD-10-PCS) codes. We determined mappings by performing comprehensive code list searches in both the ICD-9 and ICD-10 eras and leveraging the Centers for Medicare and Medicaid Services (CMS) General Equivalence Mappings (GEMs). We used forward-backward mapping as part of this comprehensive approach.¹

Sentinel Routine Querying Module: Cohort Identification and Descriptive Analysis (CIDA) module, version 12.0.0.

Data Source: We ran this request against a 100% sample from the Merative™ MarketScan® Research Databases which includes ~155 million members. We included data from October 1, 2010 to December 31, 2021 in this report. This report includes several distinct time periods: 1) October 1, 2013 to September 30, 2014; 2) October 1, 2014 to September 30, 2015; 3) October 1, 2015 to September 30, 2016; 4) October 1, 2016 to September 30, 2017; 5) October 1, 2010 to December 31, 2021. See Appendix A for the dates of available data used in this report.

Study Design: We examined the incidence and prevalence of biopsy across the ICD-9-PCS era (October 2010-September 2015) and ICD-10-PCS (October 2015-now) in data.

For conditions that could also be defined by non-ICD codes (e.g., Current Procedural Terminology, Fourth Edition (CPT-4) or Healthcare Common Procedure Coding System (HCPCS)), we included these additional codes in our outcome definitions in both the ICD-9 and ICD-10 eras.

See Appendices B and C for specific codes used to define biopsy in this request.

Cohort Eligibility Criteria:

Incident Cohorts: We identified codes for biopsy and set this as our index date. For the one-year time periods, we defined index events using only the relevant terminologies available for use during that window. For example, in the October 2014 to September 2015 window we defined index using ICD-9-PCS, CPT-4, and HCPCS codes only. In the October 2015 to September 2016 window we defined index using ICD-10-PCS, CPT-4, and HCPCS codes only. For the October 2010 to December 2021 time period, we created separate cohorts for ICD-9 era codes and ICD-10 era codes but looked for these across the full study period. We required cohort members be continuously enrolled in plans with at least medical coverage for the 183 days prior to index, during which gaps in coverage up to 45 days were allowed and considered continuous enrollment. We defined incidence as no prior evidence of any outcome-defining code (including ICD-9, ICD-10, CPT-4, HCPCS terminologies) in the 183 days prior to index. Cohort re-entry was allowed. See Appendix C for specific codes used to define incidence criteria in this request.

Prevalent Cohorts: We identified codes for biopsy and set this as our index date. We created separate cohorts for ICD-9 era codes and ICD-10 era codes but looked for these across the full study period. Again, we included codes that spanned the ICD-9 and ICD-10 eras (e.g. CPT-4 and HCPCS codes) in both the ICD-9 and ICD-10 cohorts, when relevant. We did not require any pre-index enrollment requirements for these cohorts. Cohort re-entry was allowed. We assessed prevalence only in the October 2010 to December 2021 time period.

Limitations: Algorithms used to define outcomes are imperfect; thus, it is possible that there may be misclassification. Therefore, data should be interpreted with this limitation in mind.

Please refer to Appendix D for detailed specifications of parameters used in the analyses for this request.

¹Fung, K. W., et al. (2016). "Preparing for the ICD-10-CM Transition: Automated Methods for Translating ICD Codes in Clinical Phenotype Definitions." EGEMS (Wash DC) 4(1): 1211.

Notes: Please contact the Sentinel Operations Center (info@sentinelssystem.org) for questions and to provide comments/suggestions for future enhancements to this document. For more information on Sentinel's routine querying modules, please refer to the documentation (<https://dev.sentinelssystem.org/projects/SENTINEL/repos/sentinel-routine-querying-tool-documentation/browse>).

Table of Contents

Glossary (CIDA) List of Terms to Define the Cohort Identification and Descriptive Analysis (CIDA) Found in this Report

Table 1 Summary of Biopsy Procedure in the Merative MarketScan Research Databases from October 1, 2010 to December 31, 2021

Table 2 Summary of Biopsy Procedure in the Merative MarketScan Research Databases from October 1, 2010 to December 31, 2021, by Year and Month

Figure 1 Incidence of Biopsy Procedure (183 Days Washout) per 10,000 Eligible Members from October 2010 to December 2021 by Code Type

Figure 2 Prevalence of Biopsy Procedure (0 Days Washout) per 10,000 Eligible Members from October 2010 to December 2021 by Code Type

Appendix A Dates of Available Data for Each Data Partner (DP) as of Request Distribution Date (January 17, 2023)

Appendix B List of Current Procedural Terminology, Fourth Edition (CPT-4), Healthcare Common Procedure Coding System, Level II (HCPCS), International Classification of Diseases, Ninth Revision, Clinical Modification (ICD-9-CM), and International Classification of Diseases, Tenth Revision, Procedural Coding System (ICD-10-PCS) Codes Used to Define Biopsy Procedure in this Request

Appendix C List of Current Procedural Terminology, Fourth Edition (CPT-4), Healthcare Common Procedure Coding System, Level II (HCPCS), International Classification of Diseases, Ninth Revision, Clinical Modification (ICD-9-CM), and International Classification of Diseases, Tenth Revision, Procedural Coding System (ICD-10-PCS) Codes Used to Define Biopsy Procedure Incidence Criteria in this Request

Appendix D Specifications of the Study Design and Parameters Used in this Request

Glossary of Terms for Analyses Using Cohort Identification and Descriptive Analysis (CIDA) Module*

Amount Supplied - number of units (pills, tablets, vials) dispensed. Net amount per NDC per dispensing.

Blackout Period - number of days at the beginning of a treatment episode that events are to be ignored. If an event occurs during the blackout period, the episode is excluded.

Care Setting - type of medical encounter or facility where the exposure, event, or condition code was recorded. Possible care settings include: Inpatient Hospital Stay (IP), Non-Acute Institutional Stay (IS), Emergency Department (ED), Ambulatory Visit (AV), and Other Ambulatory Visit (OA). For laboratory results, possible care settings include: Emergency Department (E), Home (H), Inpatient (I), Outpatient (O), or Unknown or Missing (U). The Care Setting, along with the Principal Diagnosis Indicator (PDX), forms the Care Setting/PDX parameter.

Ambulatory Visit (AV) - includes visits at outpatient clinics, same-day surgeries, urgent care visits, and other same-day ambulatory hospital encounters, but excludes emergency department encounters.

Emergency Department (ED) - includes ED encounters that become inpatient stays (in which case inpatient stays would be a separate encounter). Excludes urgent care visits.

Inpatient Hospital Stay (IP) - includes all inpatient stays, same-day hospital discharges, hospital transfers, and acute hospital care where the discharge is after the admission date.

Non-Acute Institutional Stay (IS) - includes hospice, skilled nursing facility (SNF), rehab center, nursing home, residential, overnight non-hospital dialysis and other non-hospital stays.

Other Ambulatory Visit (OA) - includes other non overnight AV encounters such as hospice visits, home health visits, skilled nursing facility visits, other non-hospital visits, as well as telemedicine, telephone and email consultations.

Charlson/Elixhauser Combined Comorbidity Score - calculated based on comorbidities observed during a requester-defined window around the exposure episode start date (e.g., in the 183 days prior to index).

Code Days - the minimum number of times the diagnosis must be found during the evaluation period in order to fulfill the algorithm to identify the corresponding patient characteristic.

Cohort Definition (drug/exposure) - indicates how the cohort will be defined: 01: Cohort includes only the first valid treatment episode during the query period; 02: Cohort includes all valid treatment episodes during the query period; 03: Cohort includes all valid treatment episodes during the query period until an event occurs.

Computed Start Marketing Date - represents the first observed dispensing date among all valid users within a GROUP (scenario) within each Data Partner site.

Days Supplied - number of days supplied for all dispensings in qualifying treatment episodes.

Eligible Members - number of members eligible for an incident treatment episode (defined by the drug/exposure and event washout periods) with drug and medical coverage during the query period.

Enrollment Gap - number of days allowed between two consecutive enrollment periods without breaking a "continuously enrolled" sequence.

Episodes - treatment episodes; length of episode is determined by days supplied in one dispensing or consecutive dispensings bridged by the episode gap.

Episode Gap - number of days allowed between two (or more) consecutive exposures (dispensings/procedures) to be considered the same treatment episode.

Event Deduplication - specifies how events are counted by the Modular Program (MP) algorithm: 0: Counts all occurrences of a health outcome of interest (HOI) during an exposure episode; 1: de-duplicates occurrences of the same HOI code and code type on the same day; 2: de-duplicates occurrences of the same HOI group on the same day (e.g., de-duplicates at the group level).

Exposure Episode Length - number of days after exposure initiation that is considered "exposed time."

Exposure Extension Period - number of days post treatment period in which the outcomes/events are counted for a treatment episode. Extensions are added after any episode gaps have been bridged.

Lookback Period - number of days wherein a member is required to have evidence of pre-existing condition (diagnosis/procedure/drug dispensing).

Maximum Episode Duration - truncates exposure episodes after a requester-specified number of exposed days. Applied after any gaps are bridged and extension days added to the length of the exposure episode.

Member-Years - sum of all days of enrollment with medical and drug coverage in the query period preceded by an exposure washout period all divided by 365.25.

Minimum Days Supplied - specifies a minimum number of days in length of the days supplied for the episode to be considered.

Glossary of Terms for Analyses Using Cohort Identification and Descriptive Analysis (CIDA) Module*

Minimum Episode Duration - specifies a minimum number of days in length of the episode for it to be considered. Applied after any gaps are bridged and extension days added to the length of the exposure episode.

Monitoring Period - used to define time periods of interest for both sequential analysis and simple cohort characterization requests.

Principal Diagnosis (PDX) - diagnosis or condition established to be chiefly responsible for admission of the patient to the hospital. 'P' = principal diagnosis, 'S' = secondary diagnosis, 'X' = unspecified diagnosis, '.' = blank. Along with the Care Setting values, forms the CareSetting/PDX parameter.

Query Period - period in which the modular program looks for exposures and outcomes of interest.

Switch Evaluation Step Value - value used to differentiate evaluation step. Each switch pattern can support up to 2 evaluation steps (0 = switch pattern evaluation start; 1 = first evaluation; 2 = second evaluation).

Switch Gap Inclusion Indicator - indicator for whether gaps in treatment episodes that are included in a switch episode will be counted as part of the switch episode duration.

Switch Pattern Cohort Inclusion Date - indicates which date to use for inclusion into the switch pattern cohort of interest as well as optionally as the index date of the treatment episode initiating the switch pattern. Valid options are the product approval date, product marketing date, other requester defined date, or computed start marketing date.

Switch Pattern Cohort Inclusion Strategy - indicates how the switch pattern cohort inclusion date will be used: 01: used only as a switch cohort entry date. First treatment episode dispensing date is used as index for computing time to first switch; 02: used as switch cohort entry date and as initial switch step index date for computing time to first switch.

Treatment Episode Truncation Indicator - indicates whether the exposure episode will be truncated at the occurrence of a requester-specified code.

Washout Period (drug/exposure) - number of days a user is required to have no evidence of prior exposure (drug dispensing/procedure) and continuous drug and medical coverage prior to an incident treatment episode.

Washout Period (event/outcome) - number of days a user is required to have no evidence of a prior event (procedure/diagnosis) and continuous drug and medical coverage prior to an incident treatment episode.

Years at Risk - number of days supplied plus any episode gaps and exposure extension periods all divided by 365.25.

*all terms may not be used in this report

Table 1. Summary of Biopsy Procedure in the Merative MarketScan Research Databases from October 1, 2010 to December 31, 2021

	Number of Patients	Number of Episodes	Number of Eligible Members¹	Number of Exposed Members per 10,000 Eligible Members
<i>Biopsy Procedure ICD-9-CM from 2013 to 2014</i>	880,429	885,322	49,310,403	178.55
<i>Biopsy Procedure ICD-9-CM from 2014 to 2015</i>	654,328	657,555	45,176,854	144.84
<i>Biopsy Procedure ICD-10-CM from 2015 to 2016</i>	544,753	547,775	29,496,487	184.68
<i>Biopsy Procedure ICD-10-CM from 2016 to 2017</i>	506,263	508,741	29,797,420	169.90
<i>Biopsy Procedure ICD-9-CM Incidence</i>	6,521,022	7,446,041	128,654,274	506.86
<i>Biopsy Procedure ICD-10-CM Incidence</i>	6,291,779	7,174,435	128,654,274	489.05
<i>Biopsy Procedure ICD-9-CM Prevalence</i>	7,358,891	8,812,825	149,022,924	493.81
<i>Biopsy Procedure ICD-10-CM Prevalence</i>	7,107,950	8,463,402	149,022,924	476.97

¹Eligible Members are reflective of the number of patients that met all cohort entry criteria on at least one day during the query

Table 2. Summary of Biopsy Procedure in the Merative MarketScan Research Databases from October 1, 2010 to December 31, 2021, by Year and Month

	Number of Patients	Number of Episodes	Number of Eligible Members ¹	Number of Exposed Members per 10,000 Eligible Members
Biopsy Procedure ICD-9-CM Incidence				
<i>2010</i>				
October	90,417	90,417	43,323,514	20.87
November	93,090	93,090	42,801,593	21.75
December	99,450	99,450	43,643,814	22.79
<i>2011</i>				
January	74,648	74,648	37,851,586	19.72
February	71,050	71,050	37,291,584	19.05
March	84,856	84,856	37,461,765	22.65
April	77,935	77,935	37,563,706	20.75
May	78,080	78,080	37,534,845	20.80
June	82,761	82,761	37,528,822	22.05
July	90,631	90,631	47,034,020	19.27
August	105,733	105,733	47,364,421	22.32
September	97,361	97,361	46,620,025	20.88
October	100,716	100,716	47,023,736	21.42
November	102,173	102,173	46,495,952	21.97
December	110,687	110,687	47,479,313	23.31
<i>2012</i>				
January	85,110	85,110	42,688,136	19.94
February	85,567	85,567	42,148,295	20.30
March	92,329	92,329	42,135,768	21.91
April	86,429	86,429	42,002,115	20.58
May	88,908	88,908	41,997,522	21.17
June	88,116	88,116	41,964,297	21.00
July	93,606	93,606	47,138,120	19.86
August	103,511	103,511	47,464,956	21.81
September	86,611	86,611	46,762,928	18.52
October	102,545	102,545	47,177,977	21.74
November	99,826	99,826	46,662,539	21.39
December	100,151	100,151	47,569,903	21.05
<i>2013</i>				
January	65,323	65,323	32,955,724	19.82
February	61,704	61,704	32,606,201	18.92
March	66,080	66,080	32,786,272	20.15
April	70,221	70,221	32,861,604	21.37

Table 2. Summary of Biopsy Procedure in the Merative MarketScan Research Databases from October 1, 2010 to December 31, 2021, by Year and Month

	Number of Patients	Number of Episodes	Number of Eligible Members ¹	Number of Exposed Members per 10,000 Eligible Members
May	69,587	69,587	32,871,762	21.17
June	66,235	66,235	32,755,680	20.22
July	77,591	77,591	37,490,147	20.70
August	80,019	80,019	37,786,179	21.18
September	74,948	74,948	37,153,204	20.17
October	85,658	85,658	37,419,178	22.89
November	80,184	80,184	36,871,933	21.75
December	88,079	88,079	37,358,517	23.58
<i>2014</i>				
January	64,853	64,853	32,714,188	19.82
February	60,435	60,435	32,305,792	18.71
March	67,114	67,114	32,523,325	20.64
April	69,453	69,453	32,497,621	21.37
May	66,833	66,833	32,311,198	20.68
June	67,952	67,952	32,421,698	20.96
July	80,028	80,028	38,732,658	20.66
August	77,585	77,585	39,051,696	19.87
September	77,148	77,148	38,436,220	20.07
October	86,795	86,795	38,957,177	22.28
November	77,287	77,287	38,415,358	20.12
December	89,496	89,496	39,248,486	22.80
<i>2015</i>				
January	40,685	40,685	21,921,358	18.56
February	38,947	38,947	21,659,689	17.98
March	44,571	44,571	21,698,071	20.54
April	45,031	45,031	21,696,327	20.76
May	42,278	42,278	21,678,005	19.50
June	46,498	46,498	21,618,408	21.51
July	49,998	49,998	23,885,937	20.93
August	48,494	48,494	24,091,395	20.13
September	47,472	47,472	23,716,900	20.02
October	48,935	48,935	23,888,748	20.48
November	47,829	47,829	23,597,029	20.27
December	55,453	55,453	23,982,758	23.12
<i>2016</i>				
January	37,544	37,544	21,542,597	17.43

Table 2. Summary of Biopsy Procedure in the Merative MarketScan Research Databases from October 1, 2010 to December 31, 2021, by Year and Month

	Number of Patients	Number of Episodes	Number of Eligible Members ¹	Number of Exposed Members per 10,000 Eligible Members
February	39,937	39,937	21,296,471	18.75
March	43,385	43,385	21,361,862	20.31
April	41,689	41,689	21,383,625	19.50
May	41,083	41,083	21,352,634	19.24
June	43,371	43,371	21,312,398	20.35
July	42,644	42,644	23,834,225	17.89
August	49,449	49,449	24,018,110	20.59
September	46,657	46,657	23,646,060	19.73
October	46,403	46,403	23,776,541	19.52
November	49,210	49,210	23,443,186	20.99
December	55,015	55,015	23,780,637	23.13
2017				
January	34,558	34,558	18,998,681	18.19
February	33,536	33,536	18,770,863	17.87
March	39,016	39,016	18,822,309	20.73
April	34,766	34,766	18,812,134	18.48
May	37,714	37,714	18,779,846	20.08
June	38,514	38,514	18,719,323	20.57
July	39,417	39,417	22,066,522	17.86
August	45,767	45,767	22,234,116	20.58
September	39,712	39,712	21,898,151	18.13
October	46,186	46,186	22,067,115	20.93
November	45,952	45,952	21,612,830	21.26
December	48,845	48,845	21,883,569	22.32
2018				
January	31,876	31,876	17,778,687	17.93
February	30,613	30,613	17,575,176	17.42
March	34,065	34,065	17,613,524	19.34
April	33,423	33,423	17,601,819	18.99
May	34,758	34,758	17,588,701	19.76
June	34,407	34,407	17,526,231	19.63
July	40,202	40,202	21,856,308	18.39
August	44,431	44,431	22,043,308	20.16
September	38,037	38,037	21,669,922	17.55
October	46,701	46,701	21,846,554	21.38
November	46,368	46,368	21,530,293	21.54

Table 2. Summary of Biopsy Procedure in the Merative MarketScan Research Databases from October 1, 2010 to December 31, 2021, by Year and Month

	Number of Patients	Number of Episodes	Number of Eligible Members ¹	Number of Exposed Members per 10,000 Eligible Members
December	46,532	46,532	21,887,795	21.26
<i>2019</i>				
January	34,573	34,573	18,510,663	18.68
February	32,353	32,353	18,274,205	17.70
March	34,783	34,783	18,347,419	18.96
April	36,398	36,398	18,261,994	19.93
May	36,217	36,217	18,248,275	19.85
June	33,932	33,932	18,171,092	18.67
July	38,506	38,506	19,866,135	19.38
August	39,886	39,886	20,048,807	19.89
September	36,597	36,597	19,684,468	18.59
October	42,374	42,374	19,907,770	21.29
November	40,275	40,275	19,613,276	20.53
December	43,399	43,399	19,953,483	21.75
<i>2020</i>				
January	31,274	31,274	16,661,411	18.77
February	29,330	29,330	16,461,523	17.82
March	20,202	20,202	16,536,840	12.22
April	4,624	4,624	16,593,980	2.79
May	13,727	13,727	16,633,217	8.25
June	26,648	26,648	16,622,352	16.03
July	33,994	33,994	19,657,605	17.29
August	34,271	34,271	19,843,114	17.27
September	35,737	35,737	19,508,061	18.32
October	40,388	40,388	19,562,180	20.65
November	36,239	36,239	19,275,365	18.80
December	39,538	39,538	19,492,058	20.28
<i>2021</i>				
January	24,230	24,230	16,318,148	14.85
February	24,558	24,558	16,127,508	15.23
March	30,607	30,607	16,140,453	18.96
April	29,934	29,934	16,117,142	18.57
May	27,852	27,852	16,082,039	17.32
June	30,676	30,676	15,997,978	19.17
July	32,474	32,474	17,656,864	18.39
August	32,896	32,896	17,747,102	18.54

Table 2. Summary of Biopsy Procedure in the Merative MarketScan Research Databases from October 1, 2010 to December 31, 2021, by Year and Month

	Number of Patients	Number of Episodes	Number of Eligible Members ¹	Number of Exposed Members per 10,000 Eligible Members
September	31,557	31,557	17,391,344	18.15
October	34,310	34,310	17,553,533	19.55
November	34,665	34,665	17,254,595	20.09
December	36,138	36,138	17,517,347	20.63
Biopsy Procedure ICD-10-CM Incidence				
<i>2010</i>				
October	81,312	81,312	43,323,514	18.77
November	83,978	83,978	42,801,593	19.62
December	89,873	89,873	43,643,814	20.59
<i>2011</i>				
January	66,850	66,850	37,851,586	17.66
February	63,704	63,704	37,291,584	17.08
March	76,552	76,552	37,461,765	20.43
April	70,104	70,104	37,563,706	18.66
May	70,298	70,298	37,534,845	18.73
June	74,921	74,921	37,528,822	19.96
July	82,150	82,150	47,034,020	17.47
August	95,947	95,947	47,364,421	20.26
September	88,145	88,145	46,620,025	18.91
October	91,271	91,271	47,023,736	19.41
November	92,907	92,907	46,495,952	19.98
December	101,590	101,590	47,479,313	21.40
<i>2012</i>				
January	78,087	78,087	42,688,136	18.29
February	78,891	78,891	42,148,295	18.72
March	85,443	85,443	42,135,768	20.28
April	80,399	80,399	42,002,115	19.14
May	83,027	83,027	41,997,522	19.77
June	82,149	82,149	41,964,297	19.58
July	87,205	87,205	47,138,120	18.50
August	97,062	97,062	47,464,956	20.45
September	80,746	80,746	46,762,928	17.27
October	96,115	96,115	47,177,977	20.37
November	93,928	93,928	46,662,539	20.13
December	94,302	94,302	47,569,903	19.82
<i>2013</i>				

Table 2. Summary of Biopsy Procedure in the Merative MarketScan Research Databases from October 1, 2010 to December 31, 2021, by Year and Month

	Number of Patients	Number of Episodes	Number of Eligible Members¹	Number of Exposed Members per 10,000 Eligible Members
January	60,795	60,795	32,955,724	18.45
February	57,584	57,584	32,606,201	17.66
March	61,678	61,678	32,786,272	18.81
April	65,814	65,814	32,861,604	20.03
May	65,182	65,182	32,871,762	19.83
June	62,014	62,014	32,755,680	18.93
July	72,512	72,512	37,490,147	19.34
August	74,804	74,804	37,786,179	19.80
September	69,670	69,670	37,153,204	18.75
October	79,853	79,853	37,419,178	21.34
November	74,938	74,938	36,871,933	20.32
December	82,287	82,287	37,358,517	22.03
<i>2014</i>				
January	60,283	60,283	32,714,188	18.43
February	56,181	56,181	32,305,792	17.39
March	62,348	62,348	32,523,325	19.17
April	64,468	64,468	32,497,621	19.84
May	62,287	62,287	32,311,198	19.28
June	63,478	63,478	32,421,698	19.58
July	75,261	75,261	38,732,658	19.43
August	73,443	73,443	39,051,696	18.81
September	73,042	73,042	38,436,220	19.00
October	82,378	82,378	38,957,177	21.15
November	73,342	73,342	38,415,358	19.09
December	85,246	85,246	39,248,486	21.72
<i>2015</i>				
January	37,898	37,898	21,921,358	17.29
February	36,396	36,396	21,659,689	16.80
March	41,579	41,579	21,698,071	19.16
April	42,137	42,137	21,696,327	19.42
May	39,621	39,621	21,678,005	18.28
June	43,623	43,623	21,618,408	20.18
July	46,857	46,857	23,885,937	19.62
August	45,363	45,363	24,091,395	18.83
September	44,802	44,802	23,716,900	18.89
October	49,642	49,642	23,888,748	20.78

Table 2. Summary of Biopsy Procedure in the Merative MarketScan Research Databases from October 1, 2010 to December 31, 2021, by Year and Month

	Number of Patients	Number of Episodes	Number of Eligible Members ¹	Number of Exposed Members per 10,000 Eligible Members
November	48,523	48,523	23,597,029	20.56
December	56,161	56,161	23,982,758	23.42
<i>2016</i>				
January	38,325	38,325	21,542,597	17.79
February	40,668	40,668	21,296,471	19.10
March	44,126	44,126	21,361,862	20.66
April	42,477	42,477	21,383,625	19.86
May	41,852	41,852	21,352,634	19.60
June	44,155	44,155	21,312,398	20.72
July	43,328	43,328	23,834,225	18.18
August	50,319	50,319	24,018,110	20.95
September	47,815	47,815	23,646,060	20.22
October	47,812	47,812	23,776,541	20.11
November	50,679	50,679	23,443,186	21.62
December	56,384	56,384	23,780,637	23.71
<i>2017</i>				
January	35,662	35,662	18,998,681	18.77
February	34,608	34,608	18,770,863	18.44
March	40,304	40,304	18,822,309	21.41
April	35,979	35,979	18,812,134	19.13
May	38,984	38,984	18,779,846	20.76
June	39,661	39,661	18,719,323	21.19
July	40,617	40,617	22,066,522	18.41
August	47,125	47,125	22,234,116	21.19
September	40,926	40,926	21,898,151	18.69
October	47,567	47,567	22,067,115	21.56
November	47,232	47,232	21,612,830	21.85
December	50,110	50,110	21,883,569	22.90
<i>2018</i>				
January	32,606	32,606	17,778,687	18.34
February	31,292	31,292	17,575,176	17.80
March	34,816	34,816	17,613,524	19.77
April	34,186	34,186	17,601,819	19.42
May	35,555	35,555	17,588,701	20.21
June	35,164	35,164	17,526,231	20.06
July	41,107	41,107	21,856,308	18.81

Table 2. Summary of Biopsy Procedure in the Merative MarketScan Research Databases from October 1, 2010 to December 31, 2021, by Year and Month

	Number of Patients	Number of Episodes	Number of Eligible Members ¹	Number of Exposed Members per 10,000 Eligible Members
August	45,326	45,326	22,043,308	20.56
September	38,908	38,908	21,669,922	17.95
October	47,728	47,728	21,846,554	21.85
November	47,316	47,316	21,530,293	21.98
December	47,461	47,461	21,887,795	21.68
<i>2019</i>				
January	35,471	35,471	18,510,663	19.16
February	33,201	33,201	18,274,205	18.17
March	35,786	35,786	18,347,419	19.50
April	37,402	37,402	18,261,994	20.48
May	37,186	37,186	18,248,275	20.38
June	34,871	34,871	18,171,092	19.19
July	39,637	39,637	19,866,135	19.95
August	41,010	41,010	20,048,807	20.46
September	37,678	37,678	19,684,468	19.14
October	43,555	43,555	19,907,770	21.88
November	41,341	41,341	19,613,276	21.08
December	44,485	44,485	19,953,483	22.29
<i>2020</i>				
January	32,119	32,119	16,661,411	19.28
February	30,114	30,114	16,461,523	18.29
March	20,757	20,757	16,536,840	12.55
April	4,833	4,833	16,593,980	2.91
May	14,246	14,246	16,633,217	8.56
June	27,439	27,439	16,622,352	16.51
July	34,953	34,953	19,657,605	17.78
August	35,227	35,227	19,843,114	17.75
September	36,791	36,791	19,508,061	18.86
October	41,551	41,551	19,562,180	21.24
November	37,214	37,214	19,275,365	19.31
December	40,470	40,470	19,492,058	20.76
<i>2021</i>				
January	25,056	25,056	16,318,148	15.35
February	25,379	25,379	16,127,508	15.74
March	31,559	31,559	16,140,453	19.55
April	30,789	30,789	16,117,142	19.10

Table 2. Summary of Biopsy Procedure in the Merative MarketScan Research Databases from October 1, 2010 to December 31, 2021, by Year and Month

	Number of Patients	Number of Episodes	Number of Eligible Members ¹	Number of Exposed Members per 10,000 Eligible Members
May	28,753	28,753	16,082,039	17.88
June	31,589	31,589	15,997,978	19.75
July	33,387	33,387	17,656,864	18.91
August	33,786	33,786	17,747,102	19.04
September	32,399	32,399	17,391,344	18.63
October	35,248	35,248	17,553,533	20.08
November	35,524	35,524	17,254,595	20.59
December	37,003	37,003	17,517,347	21.12
Biopsy Procedure ICD-9-CM Prevalence				
<i>2010</i>				
October	99,928	101,563	47,783,732	20.91
November	102,597	104,335	47,714,965	21.50
December	109,207	111,048	47,760,109	22.87
<i>2011</i>				
January	101,757	103,678	52,274,120	19.47
February	97,850	99,629	52,038,076	18.80
March	116,219	118,429	51,957,287	22.37
April	106,880	108,854	51,860,782	20.61
May	106,908	108,820	51,769,930	20.65
June	113,101	115,130	51,756,451	21.85
July	100,813	102,577	51,804,123	19.46
August	116,476	118,684	51,756,708	22.50
September	107,592	109,674	51,699,947	20.81
October	111,416	113,402	51,652,144	21.57
November	112,571	114,560	51,621,813	21.81
December	121,356	123,640	51,691,308	23.48
<i>2012</i>				
January	103,843	105,652	52,576,934	19.75
February	104,703	106,427	52,397,697	19.98
March	112,937	114,871	52,177,387	21.64
April	105,251	106,925	51,958,063	20.26
May	108,174	109,951	51,927,518	20.83
June	107,018	108,677	51,845,618	20.64
July	102,783	104,484	51,815,509	19.84
August	113,625	115,453	51,942,235	21.88
September	95,582	97,014	52,013,540	18.38

Table 2. Summary of Biopsy Procedure in the Merative MarketScan Research Databases from October 1, 2010 to December 31, 2021, by Year and Month

	Number of Patients	Number of Episodes	Number of Eligible Members¹	Number of Exposed Members per 10,000 Eligible Members
October	113,008	114,753	52,041,223	21.72
November	109,850	111,444	52,036,409	21.11
December	109,832	111,415	52,143,790	21.06
2013				
January	81,690	83,049	41,330,662	19.76
February	77,312	78,568	41,267,747	18.73
March	82,702	84,087	41,223,201	20.06
April	87,518	88,974	41,169,578	21.26
May	86,517	87,963	41,107,177	21.05
June	82,229	83,621	41,036,151	20.04
July	85,230	86,639	40,989,887	20.79
August	87,155	88,561	40,976,506	21.27
September	81,861	83,181	41,041,550	19.95
October	93,516	95,034	41,017,147	22.80
November	87,358	88,765	41,146,809	21.23
December	96,022	97,662	41,022,577	23.41
2014				
January	85,057	86,675	43,473,954	19.57
February	80,067	81,438	43,277,665	18.50
March	88,457	90,025	43,280,753	20.44
April	91,277	92,950	43,218,379	21.12
May	86,204	87,757	43,004,996	20.05
June	88,608	90,293	42,964,110	20.62
July	89,324	91,198	43,114,303	20.72
August	85,567	87,260	43,028,459	19.89
September	85,197	86,897	43,006,724	19.81
October	95,175	96,943	42,978,610	22.14
November	84,280	85,872	42,927,741	19.63
December	97,037	98,868	42,855,039	22.64
2015				
January	48,221	49,126	26,489,481	18.20
February	46,833	47,602	26,451,586	17.71
March	53,708	54,594	26,381,863	20.36
April	53,999	54,851	26,312,168	20.52
May	50,582	51,353	26,259,467	19.26
June	55,491	56,350	26,200,289	21.18

Table 2. Summary of Biopsy Procedure in the Merative MarketScan Research Databases from October 1, 2010 to December 31, 2021, by Year and Month

	Number of Patients	Number of Episodes	Number of Eligible Members ¹	Number of Exposed Members per 10,000 Eligible Members
July	54,698	55,530	26,155,278	20.91
August	52,523	53,343	26,077,047	20.14
September	51,491	52,298	26,022,688	19.79
October	52,744	53,368	26,017,688	20.27
November	51,278	51,858	25,965,811	19.75
December	59,422	60,122	25,926,759	22.92
<i>2016</i>				
January	44,437	44,976	26,171,554	16.98
February	47,656	48,231	26,153,287	18.22
March	51,779	52,445	26,148,283	19.80
April	49,775	50,402	26,106,323	19.07
May	48,948	49,585	26,053,425	18.79
June	51,625	52,277	26,012,490	19.85
July	46,156	46,783	25,987,259	17.76
August	53,189	53,892	25,915,857	20.52
September	50,126	50,752	25,860,540	19.38
October	49,795	50,410	25,753,179	19.34
November	52,709	53,397	25,666,896	20.54
December	58,708	59,467	25,603,634	22.93
<i>2017</i>				
January	42,725	43,247	24,253,479	17.62
February	41,803	42,307	24,209,651	17.27
March	48,644	49,262	24,184,192	20.11
April	43,270	43,774	24,121,539	17.94
May	46,848	47,413	24,077,422	19.46
June	47,616	48,190	24,025,177	19.82
July	42,248	42,736	23,948,148	17.64
August	49,127	49,703	23,901,232	20.55
September	42,752	43,183	23,861,833	17.92
October	49,474	50,046	23,830,784	20.76
November	49,208	49,726	23,610,075	20.84
December	52,059	52,656	23,562,154	22.09
<i>2018</i>				
January	42,386	42,858	24,301,121	17.44
February	40,710	41,104	24,278,968	16.77
March	45,538	46,054	24,232,276	18.79

Table 2. Summary of Biopsy Procedure in the Merative MarketScan Research Databases from October 1, 2010 to December 31, 2021, by Year and Month

	Number of Patients	Number of Episodes	Number of Eligible Members ¹	Number of Exposed Members per 10,000 Eligible Members
April	43,761	44,223	24,185,445	18.09
May	45,559	46,028	24,113,466	18.89
June	44,925	45,394	24,057,211	18.67
July	43,753	44,232	24,006,160	18.23
August	48,099	48,606	23,997,638	20.04
September	41,242	41,637	23,972,867	17.20
October	50,554	51,023	23,920,988	21.13
November	50,081	50,575	23,871,095	20.98
December	49,964	50,519	23,802,676	20.99
<i>2019</i>				
January	40,389	40,856	22,188,245	18.20
February	38,003	38,394	22,171,940	17.14
March	40,989	41,447	22,140,668	18.51
April	42,810	43,297	22,036,744	19.43
May	42,671	43,183	22,002,830	19.39
June	39,826	40,355	21,951,062	18.14
July	42,092	42,801	21,892,323	19.23
August	43,226	43,968	21,865,062	19.77
September	39,782	40,421	21,824,448	18.23
October	46,010	46,815	21,811,664	21.09
November	43,464	44,173	21,762,917	19.97
December	46,749	47,532	21,731,070	21.51
<i>2020</i>				
January	40,206	40,901	21,597,091	18.62
February	37,974	38,563	21,553,960	17.62
March	26,093	26,588	21,530,147	12.12
April	6,279	6,426	21,487,224	2.92
May	18,386	19,115	21,424,880	8.58
June	34,245	35,387	21,388,355	16.01
July	36,933	37,975	21,236,324	17.39
August	36,926	37,893	21,180,862	17.43
September	38,450	39,521	21,097,793	18.22
October	43,389	44,586	21,002,571	20.66
November	38,960	39,964	20,952,934	18.59
December	42,522	43,712	20,915,869	20.33
<i>2021</i>				

Table 2. Summary of Biopsy Procedure in the Merative MarketScan Research Databases from October 1, 2010 to December 31, 2021, by Year and Month

	Number of Patients	Number of Episodes	Number of Eligible Members ¹	Number of Exposed Members per 10,000 Eligible Members
January	29,753	30,525	19,598,561	15.18
February	30,319	31,243	19,570,182	15.49
March	37,827	38,897	19,535,326	19.36
April	37,132	38,193	19,519,760	19.02
May	34,569	35,451	19,569,498	17.66
June	37,983	38,900	19,536,298	19.44
July	35,728	36,520	19,471,442	18.35
August	35,836	36,547	19,448,365	18.43
September	34,535	35,290	19,411,991	17.79
October	37,438	38,295	19,339,254	19.36
November	37,576	38,433	19,299,376	19.47
December	38,933	39,781	19,262,996	20.21
Biopsy Procedure ICD-10-CM Prevalence				
<i>2010</i>				
October	89,580	90,609	47,783,732	18.75
November	92,294	93,420	47,714,965	19.34
December	98,455	99,692	47,760,109	20.61
<i>2011</i>				
January	91,156	92,455	52,274,120	17.44
February	87,826	89,001	52,038,076	16.88
March	104,907	106,451	51,957,287	20.19
April	96,239	97,586	51,860,782	18.56
May	96,370	97,671	51,769,930	18.62
June	102,416	103,785	51,756,451	19.79
July	91,094	92,309	51,804,123	17.58
August	105,389	106,880	51,756,708	20.36
September	97,233	98,629	51,699,947	18.81
October	100,735	102,068	51,652,144	19.50
November	102,065	103,413	51,621,813	19.77
December	111,152	112,746	51,691,308	21.50
<i>2012</i>				
January	94,977	96,274	52,576,934	18.06
February	96,290	97,586	52,397,697	18.38
March	104,312	105,786	52,177,387	19.99
April	97,708	98,987	51,958,063	18.81
May	100,924	102,298	51,927,518	19.44

Table 2. Summary of Biopsy Procedure in the Merative MarketScan Research Databases from October 1, 2010 to December 31, 2021, by Year and Month

	Number of Patients	Number of Episodes	Number of Eligible Members ¹	Number of Exposed Members per 10,000 Eligible Members
June	99,642	100,901	51,845,618	19.22
July	95,536	96,829	51,815,509	18.44
August	106,306	107,742	51,942,235	20.47
September	88,953	90,036	52,013,540	17.10
October	105,728	107,047	52,041,223	20.32
November	103,169	104,403	52,036,409	19.83
December	103,184	104,437	52,143,790	19.79
2013				
January	75,875	76,947	41,330,662	18.36
February	71,987	72,958	41,267,747	17.44
March	76,971	78,056	41,223,201	18.67
April	81,747	82,872	41,169,578	19.86
May	80,857	81,989	41,107,177	19.67
June	76,819	77,895	41,036,151	18.72
July	79,565	80,658	40,989,887	19.41
August	81,317	82,412	40,976,506	19.84
September	76,004	77,018	41,041,550	18.52
October	87,011	88,207	41,017,147	21.21
November	81,556	82,683	41,146,809	19.82
December	89,563	90,923	41,022,577	21.83
2014				
January	79,014	80,304	43,473,954	18.18
February	74,350	75,445	43,277,665	17.18
March	82,119	83,375	43,280,753	18.97
April	84,815	86,130	43,218,379	19.62
May	80,310	81,550	43,004,996	18.67
June	82,745	84,133	42,964,110	19.26
July	83,900	85,438	43,114,303	19.46
August	80,820	82,200	43,028,459	18.78
September	80,499	81,880	43,006,724	18.72
October	90,184	91,641	42,978,610	20.98
November	79,832	81,152	42,927,741	18.60
December	92,280	93,827	42,855,039	21.53
2015				
January	44,842	45,489	26,489,481	16.93
February	43,664	44,233	26,451,586	16.51

Table 2. Summary of Biopsy Procedure in the Merative MarketScan Research Databases from October 1, 2010 to December 31, 2021, by Year and Month

	Number of Patients	Number of Episodes	Number of Eligible Members ¹	Number of Exposed Members per 10,000 Eligible Members
March	49,941	50,573	26,381,863	18.93
April	50,439	51,075	26,312,168	19.17
May	47,277	47,851	26,259,467	18.00
June	51,901	52,552	26,200,289	19.81
July	51,133	51,755	26,155,278	19.55
August	49,028	49,608	26,077,047	18.80
September	48,519	49,127	26,022,688	18.64
October	53,493	54,239	26,017,688	20.56
November	52,001	52,687	25,965,811	20.03
December	60,161	60,973	25,926,759	23.20
<i>2016</i>				
January	45,316	45,998	26,171,554	17.31
February	48,490	49,165	26,153,287	18.54
March	52,644	53,455	26,148,283	20.13
April	50,669	51,434	26,106,323	19.41
May	49,850	50,617	26,053,425	19.13
June	52,551	53,371	26,012,490	20.20
July	46,925	47,681	25,987,259	18.06
August	54,129	54,994	25,915,857	20.89
September	51,351	52,206	25,860,540	19.86
October	51,293	52,131	25,753,179	19.92
November	54,285	55,163	25,666,896	21.15
December	60,146	61,090	25,603,634	23.49
<i>2017</i>				
January	44,032	44,733	24,253,479	18.15
February	43,067	43,723	24,209,651	17.79
March	50,170	50,958	24,184,192	20.74
April	44,696	45,358	24,121,539	18.53
May	48,348	49,076	24,077,422	20.08
June	49,003	49,747	24,025,177	20.40
July	43,511	44,171	23,948,148	18.17
August	50,537	51,273	23,901,232	21.14
September	44,018	44,579	23,861,833	18.45
October	50,924	51,644	23,830,784	21.37
November	50,545	51,201	23,610,075	21.41
December	53,372	54,113	23,562,154	22.65

Table 2. Summary of Biopsy Procedure in the Merative MarketScan Research Databases from October 1, 2010 to December 31, 2021, by Year and Month

	Number of Patients	Number of Episodes	Number of Eligible Members ¹	Number of Exposed Members per 10,000 Eligible Members
<i>2018</i>				
January	43,293	43,884	24,301,121	17.82
February	41,550	42,045	24,278,968	17.11
March	46,478	47,132	24,232,276	19.18
April	44,664	45,236	24,185,445	18.47
May	46,507	47,089	24,113,466	19.29
June	45,816	46,388	24,057,211	19.04
July	44,702	45,297	24,006,160	18.62
August	49,035	49,698	23,997,638	20.43
September	42,151	42,685	23,972,867	17.58
October	51,649	52,237	23,920,988	21.59
November	51,074	51,689	23,871,095	21.40
December	50,936	51,609	23,802,676	21.40
<i>2019</i>				
January	41,362	41,966	22,188,245	18.64
February	38,933	39,430	22,171,940	17.56
March	42,093	42,668	22,140,668	19.01
April	43,894	44,492	22,036,744	19.92
May	43,696	44,330	22,002,830	19.86
June	40,840	41,469	21,951,062	18.61
July	43,279	44,101	21,892,323	19.77
August	44,390	45,262	21,865,062	20.30
September	40,916	41,685	21,824,448	18.75
October	47,235	48,188	21,811,664	21.66
November	44,589	45,395	21,762,917	20.49
December	47,888	48,797	21,731,070	22.04
<i>2020</i>				
January	41,321	42,169	21,597,091	19.13
February	38,975	39,684	21,553,960	18.08
March	26,832	27,393	21,530,147	12.46
April	6,564	6,789	21,487,224	3.05
May	19,055	19,919	21,424,880	8.89
June	35,232	36,525	21,388,355	16.47
July	37,918	39,108	21,236,324	17.86
August	37,870	38,982	21,180,862	17.88
September	39,517	40,746	21,097,793	18.73

Table 2. Summary of Biopsy Procedure in the Merative MarketScan Research Databases from October 1, 2010 to December 31, 2021, by Year and Month

	Number of Patients	Number of Episodes	Number of Eligible Members ¹	Number of Exposed Members per 10,000 Eligible Members
October	44,566	45,917	21,002,571	21.22
November	39,944	41,096	20,952,934	19.06
December	43,487	44,771	20,915,869	20.79
2021				
January	30,667	31,547	19,598,561	15.65
February	31,221	32,275	19,570,182	15.95
March	38,879	40,101	19,535,326	19.90
April	38,080	39,278	19,519,760	19.51
May	35,562	36,570	19,569,498	18.17
June	39,000	40,071	19,536,298	19.96
July	36,675	37,569	19,471,442	18.84
August	36,744	37,562	19,448,365	18.89
September	35,397	36,226	19,411,991	18.23
October	38,401	39,368	19,339,254	19.86
November	38,469	39,432	19,299,376	19.93
December	39,823	40,755	19,262,996	20.67

¹Eligible Members are reflective of the number of patients that met all cohort entry criteria on at least one day during the query period.

Figure 1. Incidence of Biopsy Procedure (183 Days Washout) per 10,000 Eligible Members from October 2010 to December 2021 by Code Type

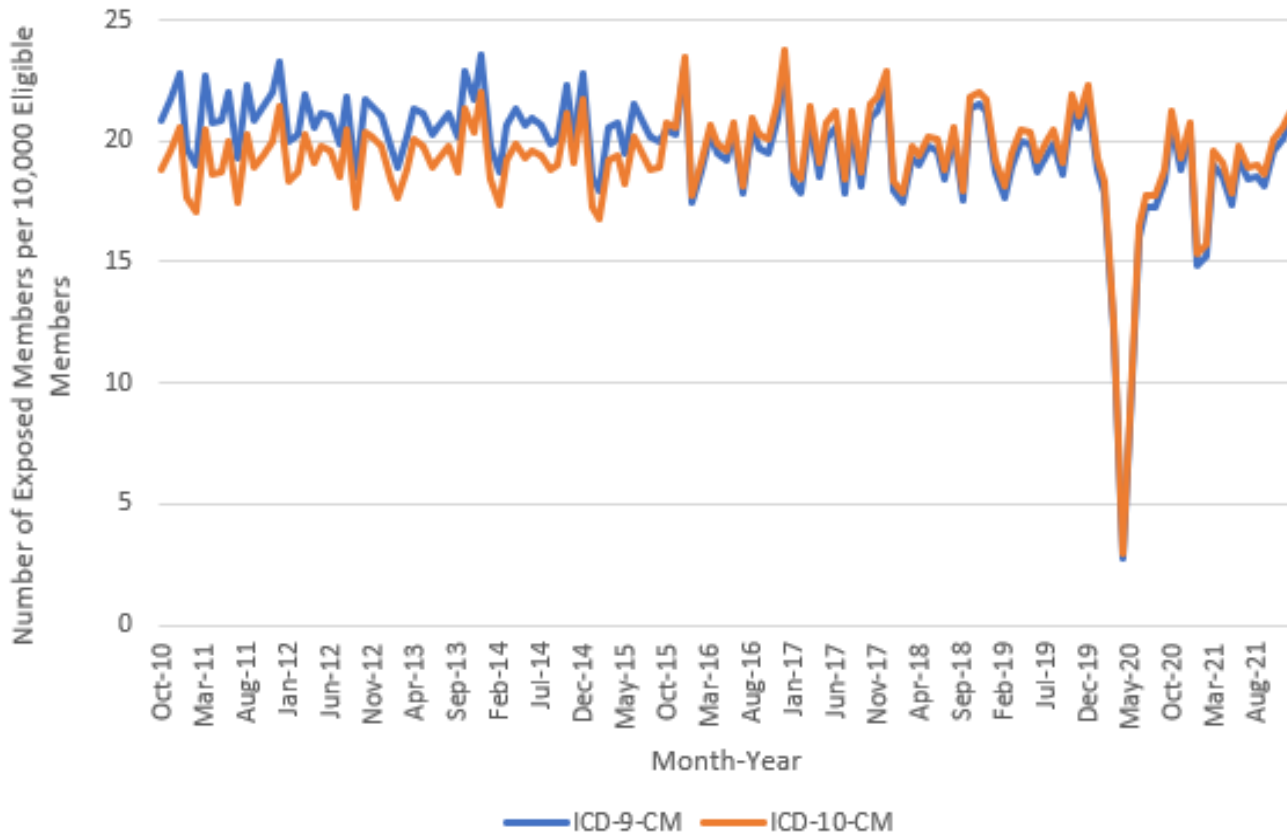
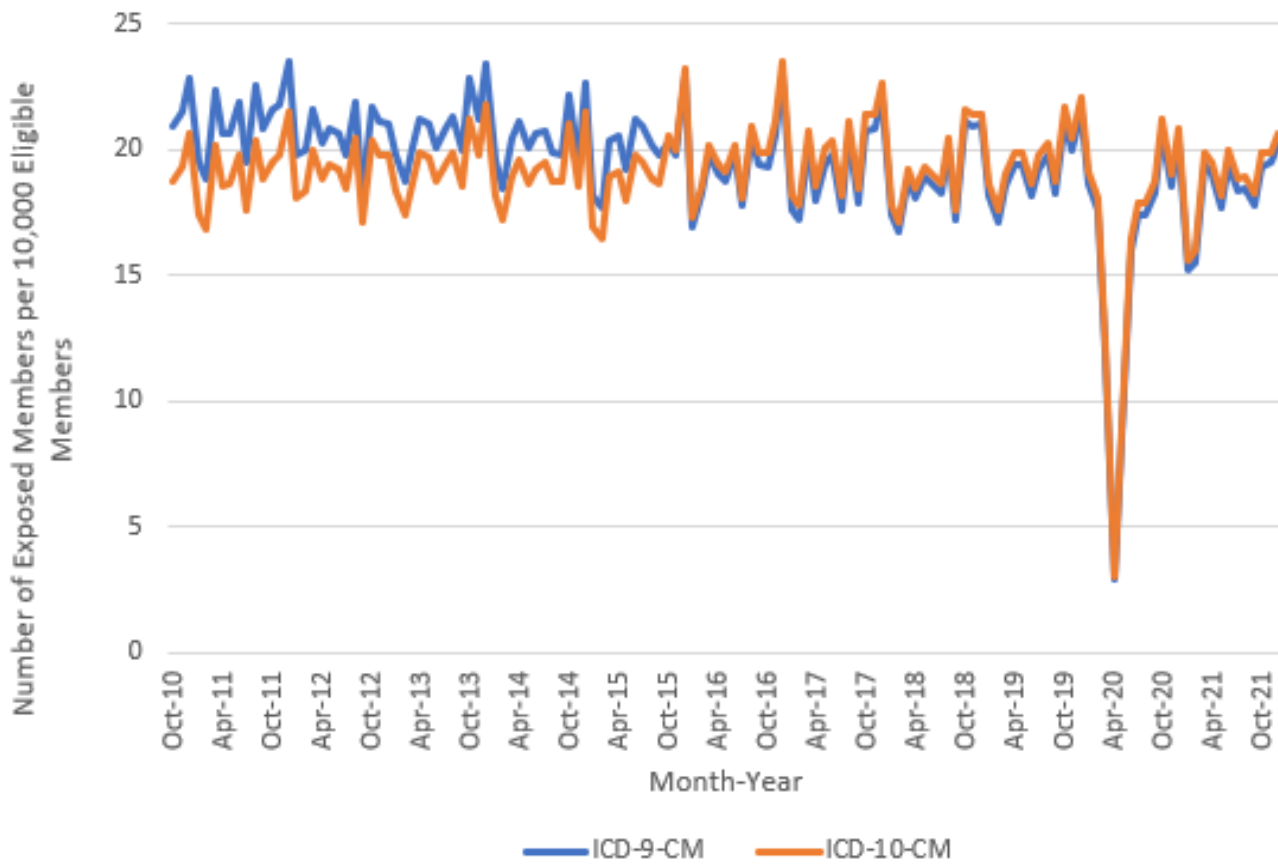


Figure 2. Prevalence of Biopsy Procedure (0 Days Washout) per 10,000 Eligible Members from October 2010 to December 2021 by Code Type



Appendix A. Dates of Available Data for Each Data Partner (DP) as of Request Distribution Date (January 17, 2023)

Masked DP ID¹	DP Start Date	DP End Date²
DP01	01/01/2010	12/31/2021

¹Participating Data Partner(s) include(s) Merative MarketScan Research Databases.

²End Date represents the earliest of: (1) query end date, or (2) last day of the most recent month for which all of a Data Partner's data tables (enrollment, dispensing, etc.) have at least 80% of the record count relative to the prior month.

Appendix B. List of Current Procedural Terminology, Fourth Edition (CPT-4), Healthcare Common Procedure Coding System, Level II (HCPCS), International Classification of Diseases, Ninth Revision, Clinical Modification (ICD-9-CM), and International Classification of Diseases, Tenth Revision, Procedural Coding System (ICD-10-PCS) Codes Used to Define Biopsy in this Request

Code	Description	Code Category	Code Type
Biopsy			
45.00	Incision of intestine, not otherwise specified	Procedure	ICD-9-CM
45.01	Incision of duodenum	Procedure	ICD-9-CM
45.02	Other incision of small intestine	Procedure	ICD-9-CM
45.03	Incision of large intestine	Procedure	ICD-9-CM
45.14	Closed [endoscopic] biopsy of small intestine	Procedure	ICD-9-CM
45.15	Open biopsy of small intestine	Procedure	ICD-9-CM
45.16	Esophagogastroduodenoscopy (EGD) with closed biopsy	Procedure	ICD-9-CM
45.25	Closed [endoscopic] biopsy of large intestine	Procedure	ICD-9-CM
45.26	Open biopsy of large intestine	Procedure	ICD-9-CM
45.27	Intestinal biopsy, site unspecified	Procedure	ICD-9-CM
45.30	Endoscopic excision or destruction of lesion of duodenum	Procedure	ICD-9-CM
45.31	Other local excision of lesion of duodenum	Procedure	ICD-9-CM
45.32	Other destruction of lesion of duodenum	Procedure	ICD-9-CM
45.33	Local excision of lesion or tissue of small intestine, except duodenum	Procedure	ICD-9-CM
45.34	Other destruction of lesion of small intestine, except duodenum	Procedure	ICD-9-CM
45.41	Excision of lesion or tissue of large intestine	Procedure	ICD-9-CM
45.42	Endoscopic polypectomy of large intestine	Procedure	ICD-9-CM
45.43	Endoscopic destruction of other lesion or tissue of large intestine	Procedure	ICD-9-CM
45.49	Other destruction of lesion of large intestine	Procedure	ICD-9-CM
45.79	Other and unspecified partial excision of large intestine	Procedure	ICD-9-CM
48.24	Closed (endoscopic) biopsy of rectum	Procedure	ICD-9-CM
48.25	Open biopsy of rectum	Procedure	ICD-9-CM
48.26	Biopsy of perirectal tissue	Procedure	ICD-9-CM
48.35	Local excision of rectal lesion or tissue	Procedure	ICD-9-CM
48.36	[Endoscopic] polypectomy of rectum	Procedure	ICD-9-CM
48.82	Excision of perirectal tissue	Procedure	ICD-9-CM
49.02	Other incision of perianal tissue	Procedure	ICD-9-CM
49.04	Other excision of perianal tissue	Procedure	ICD-9-CM
49.22	Biopsy of perianal tissue	Procedure	ICD-9-CM
49.23	Biopsy of anus	Procedure	ICD-9-CM
49.31	Endoscopic excision or destruction of lesion or tissue of anus	Procedure	ICD-9-CM
49.39	Other local excision or destruction of lesion or tissue of anus	Procedure	ICD-9-CM
50.12	Open biopsy of liver	Procedure	ICD-9-CM
0D5E4ZZ	Destruction of Large Intestine, Percutaneous Endoscopic Approach	Procedure	ICD-10-PCS
0D980ZX	Drainage of Small Intestine, Open Approach, Diagnostic	Procedure	ICD-10-PCS
0D983ZX	Drainage of Small Intestine, Percutaneous Approach, Diagnostic	Procedure	ICD-10-PCS
0D984ZX	Drainage of Small Intestine, Percutaneous Endoscopic Approach, Diagnostic	Procedure	ICD-10-PCS
0D987ZX	Drainage of Small Intestine, Via Natural or Artificial Opening, Diagnostic	Procedure	ICD-10-PCS
0D988ZX	Drainage of Small Intestine, Via Natural or Artificial Opening Endoscopic, Diagnostic	Procedure	ICD-10-PCS
0D990ZX	Drainage of Duodenum, Open Approach, Diagnostic	Procedure	ICD-10-PCS
0D993ZX	Drainage of Duodenum, Percutaneous Approach, Diagnostic	Procedure	ICD-10-PCS
0D994ZX	Drainage of Duodenum, Percutaneous Endoscopic Approach, Diagnostic	Procedure	ICD-10-PCS
0D997ZX	Drainage of Duodenum, Via Natural or Artificial Opening, Diagnostic	Procedure	ICD-10-PCS
0D998ZX	Drainage of Duodenum, Via Natural or Artificial Opening Endoscopic, Diagnostic	Procedure	ICD-10-PCS
0D9A0ZX	Drainage of Jejunum, Open Approach, Diagnostic	Procedure	ICD-10-PCS

Appendix B. List of Current Procedural Terminology, Fourth Edition (CPT-4), Healthcare Common Procedure Coding System, Level II (HCPCS), International Classification of Diseases, Ninth Revision, Clinical Modification (ICD-9-CM), and International Classification of Diseases, Tenth Revision, Procedural Coding System (ICD-10-PCS) Codes Used to Define Biopsy in this Request

Code	Description	Code Category	Code Type
0D9A3ZX	Drainage of Jejunum, Percutaneous Approach, Diagnostic	Procedure	ICD-10-PCS
0D9A4ZX	Drainage of Jejunum, Percutaneous Endoscopic Approach, Diagnostic	Procedure	ICD-10-PCS
0D9A7ZX	Drainage of Jejunum, Via Natural or Artificial Opening, Diagnostic	Procedure	ICD-10-PCS
0D9A8ZX	Drainage of Jejunum, Via Natural or Artificial Opening Endoscopic, Diagnostic	Procedure	ICD-10-PCS
0D9B0ZX	Drainage of Ileum, Open Approach, Diagnostic	Procedure	ICD-10-PCS
0D9B3ZX	Drainage of Ileum, Percutaneous Approach, Diagnostic	Procedure	ICD-10-PCS
0D9B4ZX	Drainage of Ileum, Percutaneous Endoscopic Approach, Diagnostic	Procedure	ICD-10-PCS
0D9B7ZX	Drainage of Ileum, Via Natural or Artificial Opening, Diagnostic	Procedure	ICD-10-PCS
0D9B8ZX	Drainage of Ileum, Via Natural or Artificial Opening Endoscopic, Diagnostic	Procedure	ICD-10-PCS
0D9C0ZX	Drainage of Ileocecal Valve, Open Approach, Diagnostic	Procedure	ICD-10-PCS
0D9C3ZX	Drainage of Ileocecal Valve, Percutaneous Approach, Diagnostic	Procedure	ICD-10-PCS
0D9C4ZX	Drainage of Ileocecal Valve, Percutaneous Endoscopic Approach, Diagnostic	Procedure	ICD-10-PCS
0D9C7ZX	Drainage of Ileocecal Valve, Via Natural or Artificial Opening, Diagnostic	Procedure	ICD-10-PCS
0D9C8ZX	Drainage of Ileocecal Valve, Via Natural or Artificial Opening Endoscopic, Diagnostic	Procedure	ICD-10-PCS
0D9E0ZX	Drainage of Large Intestine, Open Approach, Diagnostic	Procedure	ICD-10-PCS
0D9E3ZX	Drainage of Large Intestine, Percutaneous Approach, Diagnostic	Procedure	ICD-10-PCS
0D9E4ZX	Drainage of Large Intestine, Percutaneous Endoscopic Approach, Diagnostic	Procedure	ICD-10-PCS
0D9E7ZX	Drainage of Large Intestine, Via Natural or Artificial Opening, Diagnostic	Procedure	ICD-10-PCS
0D9E8ZX	Drainage of Large Intestine, Via Natural or Artificial Opening Endoscopic, Diagnostic	Procedure	ICD-10-PCS
0D9F0ZX	Drainage of Right Large Intestine, Open Approach, Diagnostic	Procedure	ICD-10-PCS
0D9F3ZX	Drainage of Right Large Intestine, Percutaneous Approach, Diagnostic	Procedure	ICD-10-PCS
0D9F4ZX	Drainage of Right Large Intestine, Percutaneous Endoscopic Approach, Diagnostic	Procedure	ICD-10-PCS
0D9F7ZX	Drainage of Right Large Intestine, Via Natural or Artificial Opening, Diagnostic	Procedure	ICD-10-PCS
0D9F8ZX	Drainage of Right Large Intestine, Via Natural or Artificial Opening Endoscopic, Diagnostic	Procedure	ICD-10-PCS
0D9G0ZX	Drainage of Left Large Intestine, Open Approach, Diagnostic	Procedure	ICD-10-PCS
0D9G3ZX	Drainage of Left Large Intestine, Percutaneous Approach, Diagnostic	Procedure	ICD-10-PCS
0D9G4ZX	Drainage of Left Large Intestine, Percutaneous Endoscopic Approach, Diagnostic	Procedure	ICD-10-PCS
0D9G7ZX	Drainage of Left Large Intestine, Via Natural or Artificial Opening, Diagnostic	Procedure	ICD-10-PCS
0D9G8ZX	Drainage of Left Large Intestine, Via Natural or Artificial Opening Endoscopic, Diagnostic	Procedure	ICD-10-PCS
0D9H0ZX	Drainage of Cecum, Open Approach, Diagnostic	Procedure	ICD-10-PCS
0D9H3ZX	Drainage of Cecum, Percutaneous Approach, Diagnostic	Procedure	ICD-10-PCS
0D9H4ZX	Drainage of Cecum, Percutaneous Endoscopic Approach, Diagnostic	Procedure	ICD-10-PCS
0D9H7ZX	Drainage of Cecum, Via Natural or Artificial Opening, Diagnostic	Procedure	ICD-10-PCS
0D9H8ZX	Drainage of Cecum, Via Natural or Artificial Opening Endoscopic, Diagnostic	Procedure	ICD-10-PCS
0D9J0ZX	Drainage of Appendix, Open Approach, Diagnostic	Procedure	ICD-10-PCS
0D9K0ZX	Drainage of Ascending Colon, Open Approach, Diagnostic	Procedure	ICD-10-PCS
0D9K3ZX	Drainage of Ascending Colon, Percutaneous Approach, Diagnostic	Procedure	ICD-10-PCS
0D9K4ZX	Drainage of Ascending Colon, Percutaneous Endoscopic Approach, Diagnostic	Procedure	ICD-10-PCS
0D9K7ZX	Drainage of Ascending Colon, Via Natural or Artificial Opening, Diagnostic	Procedure	ICD-10-PCS
0D9K8ZX	Drainage of Ascending Colon, Via Natural or Artificial Opening Endoscopic, Diagnostic	Procedure	ICD-10-PCS
0D9L0ZX	Drainage of Transverse Colon, Open Approach, Diagnostic	Procedure	ICD-10-PCS
0D9L3ZX	Drainage of Transverse Colon, Percutaneous Approach, Diagnostic	Procedure	ICD-10-PCS
0D9L4ZX	Drainage of Transverse Colon, Percutaneous Endoscopic Approach, Diagnostic	Procedure	ICD-10-PCS
0D9L7ZX	Drainage of Transverse Colon, Via Natural or Artificial Opening, Diagnostic	Procedure	ICD-10-PCS
0D9L8ZX	Drainage of Transverse Colon, Via Natural or Artificial Opening Endoscopic, Diagnostic	Procedure	ICD-10-PCS

Appendix B. List of Current Procedural Terminology, Fourth Edition (CPT-4), Healthcare Common Procedure Coding System, Level II (HCPCS), International Classification of Diseases, Ninth Revision, Clinical Modification (ICD-9-CM), and International Classification of Diseases, Tenth Revision, Procedural Coding System (ICD-10-PCS) Codes Used to Define Biopsy in this Request

Code	Description	Code Category	Code Type
0D9M0ZX	Drainage of Descending Colon, Open Approach, Diagnostic	Procedure	ICD-10-PCS
0D9M3ZX	Drainage of Descending Colon, Percutaneous Approach, Diagnostic	Procedure	ICD-10-PCS
0D9M4ZX	Drainage of Descending Colon, Percutaneous Endoscopic Approach, Diagnostic	Procedure	ICD-10-PCS
0D9M7ZX	Drainage of Descending Colon, Via Natural or Artificial Opening, Diagnostic	Procedure	ICD-10-PCS
0D9M8ZX	Drainage of Descending Colon, Via Natural or Artificial Opening Endoscopic, Diagnostic	Procedure	ICD-10-PCS
0D9N0ZX	Drainage of Sigmoid Colon, Open Approach, Diagnostic	Procedure	ICD-10-PCS
0D9N3ZX	Drainage of Sigmoid Colon, Percutaneous Approach, Diagnostic	Procedure	ICD-10-PCS
0D9N4ZX	Drainage of Sigmoid Colon, Percutaneous Endoscopic Approach, Diagnostic	Procedure	ICD-10-PCS
0D9N7ZX	Drainage of Sigmoid Colon, Via Natural or Artificial Opening, Diagnostic	Procedure	ICD-10-PCS
0D9N8ZX	Drainage of Sigmoid Colon, Via Natural or Artificial Opening Endoscopic, Diagnostic	Procedure	ICD-10-PCS
0D9P0ZX	Drainage of Rectum, Open Approach, Diagnostic	Procedure	ICD-10-PCS
0D9P3ZX	Drainage of Rectum, Percutaneous Approach, Diagnostic	Procedure	ICD-10-PCS
0D9P4ZX	Drainage of Rectum, Percutaneous Endoscopic Approach, Diagnostic	Procedure	ICD-10-PCS
0D9P7ZX	Drainage of Rectum, Via Natural or Artificial Opening, Diagnostic	Procedure	ICD-10-PCS
0D9P8ZX	Drainage of Rectum, Via Natural or Artificial Opening Endoscopic, Diagnostic	Procedure	ICD-10-PCS
0D9Q0ZX	Drainage of Anus, Open Approach, Diagnostic	Procedure	ICD-10-PCS
0D9Q3ZX	Drainage of Anus, Percutaneous Approach, Diagnostic	Procedure	ICD-10-PCS
0DB80ZX	Excision of Small Intestine, Open Approach, Diagnostic	Procedure	ICD-10-PCS
0DB83ZX	Excision of Small Intestine, Percutaneous Approach, Diagnostic	Procedure	ICD-10-PCS
0DB84ZX	Excision of Small Intestine, Percutaneous Endoscopic Approach, Diagnostic	Procedure	ICD-10-PCS
0DB87ZX	Excision of Small Intestine, Via Natural or Artificial Opening, Diagnostic	Procedure	ICD-10-PCS
0DB88ZX	Excision of Small Intestine, Via Natural or Artificial Opening Endoscopic, Diagnostic	Procedure	ICD-10-PCS
0DB93ZX	Excision of Duodenum, Percutaneous Approach, Diagnostic	Procedure	ICD-10-PCS
0DB94ZX	Excision of Duodenum, Percutaneous Endoscopic Approach, Diagnostic	Procedure	ICD-10-PCS
0DB97ZX	Excision of Duodenum, Via Natural or Artificial Opening, Diagnostic	Procedure	ICD-10-PCS
0DB98ZX	Excision of Duodenum, Via Natural or Artificial Opening Endoscopic, Diagnostic	Procedure	ICD-10-PCS
0DBA0ZX	Excision of Jejunum, Open Approach, Diagnostic	Procedure	ICD-10-PCS
0DBA3ZX	Excision of Jejunum, Percutaneous Approach, Diagnostic	Procedure	ICD-10-PCS
0DBA4ZX	Excision of Jejunum, Percutaneous Endoscopic Approach, Diagnostic	Procedure	ICD-10-PCS
0DBA7ZX	Excision of Jejunum, Via Natural or Artificial Opening, Diagnostic	Procedure	ICD-10-PCS
0DBA8ZX	Excision of Jejunum, Via Natural or Artificial Opening Endoscopic, Diagnostic	Procedure	ICD-10-PCS
0DBB0ZX	Excision of Ileum, Open Approach, Diagnostic	Procedure	ICD-10-PCS
0DBB3ZX	Excision of Ileum, Percutaneous Approach, Diagnostic	Procedure	ICD-10-PCS
0DBB4ZX	Excision of Ileum, Percutaneous Endoscopic Approach, Diagnostic	Procedure	ICD-10-PCS
0DBB7ZX	Excision of Ileum, Via Natural or Artificial Opening, Diagnostic	Procedure	ICD-10-PCS
0DBB8ZX	Excision of Ileum, Via Natural or Artificial Opening Endoscopic, Diagnostic	Procedure	ICD-10-PCS
0DBC0ZX	Excision of Ileocecal Valve, Open Approach, Diagnostic	Procedure	ICD-10-PCS
0DBC3ZX	Excision of Ileocecal Valve, Percutaneous Approach, Diagnostic	Procedure	ICD-10-PCS
0DBC4ZX	Excision of Ileocecal Valve, Percutaneous Endoscopic Approach, Diagnostic	Procedure	ICD-10-PCS
0DBC7ZX	Excision of Ileocecal Valve, Via Natural or Artificial Opening, Diagnostic	Procedure	ICD-10-PCS
0DBC8ZX	Excision of Ileocecal Valve, Via Natural or Artificial Opening Endoscopic, Diagnostic	Procedure	ICD-10-PCS
0DBE0ZX	Excision of Large Intestine, Open Approach, Diagnostic	Procedure	ICD-10-PCS
0DBE3ZX	Excision of Large Intestine, Percutaneous Approach, Diagnostic	Procedure	ICD-10-PCS
0DBE4ZX	Excision of Large Intestine, Percutaneous Endoscopic Approach, Diagnostic	Procedure	ICD-10-PCS
0DBE7ZX	Excision of Large Intestine, Via Natural or Artificial Opening, Diagnostic	Procedure	ICD-10-PCS

Appendix B. List of Current Procedural Terminology, Fourth Edition (CPT-4), Healthcare Common Procedure Coding System, Level II (HCPCS), International Classification of Diseases, Ninth Revision, Clinical Modification (ICD-9-CM), and International Classification of Diseases, Tenth Revision, Procedural Coding System (ICD-10-PCS) Codes Used to Define Biopsy in this Request

Code	Description	Code Category	Code Type
ODBE8ZX	Excision of Large Intestine, Via Natural or Artificial Opening Endoscopic, Diagnostic	Procedure	ICD-10-PCS
ODBF0ZX	Excision of Right Large Intestine, Open Approach, Diagnostic	Procedure	ICD-10-PCS
ODBF3ZX	Excision of Right Large Intestine, Percutaneous Approach, Diagnostic	Procedure	ICD-10-PCS
ODBF4ZX	Excision of Right Large Intestine, Percutaneous Endoscopic Approach, Diagnostic	Procedure	ICD-10-PCS
ODBF7ZX	Excision of Right Large Intestine, Via Natural or Artificial Opening, Diagnostic	Procedure	ICD-10-PCS
ODBF8ZX	Excision of Right Large Intestine, Via Natural or Artificial Opening Endoscopic, Diagnostic	Procedure	ICD-10-PCS
ODBG0ZX	Excision of Left Large Intestine, Open Approach, Diagnostic	Procedure	ICD-10-PCS
ODBG3ZX	Excision of Left Large Intestine, Percutaneous Approach, Diagnostic	Procedure	ICD-10-PCS
ODBG4ZX	Excision of Left Large Intestine, Percutaneous Endoscopic Approach, Diagnostic	Procedure	ICD-10-PCS
ODBG7ZX	Excision of Left Large Intestine, Via Natural or Artificial Opening, Diagnostic	Procedure	ICD-10-PCS
ODBG8ZX	Excision of Left Large Intestine, Via Natural or Artificial Opening Endoscopic, Diagnostic	Procedure	ICD-10-PCS
ODBH0ZX	Excision of Cecum, Open Approach, Diagnostic	Procedure	ICD-10-PCS
ODBH3ZX	Excision of Cecum, Percutaneous Approach, Diagnostic	Procedure	ICD-10-PCS
ODBH4ZX	Excision of Cecum, Percutaneous Endoscopic Approach, Diagnostic	Procedure	ICD-10-PCS
ODBH7ZX	Excision of Cecum, Via Natural or Artificial Opening, Diagnostic	Procedure	ICD-10-PCS
ODBH8ZX	Excision of Cecum, Via Natural or Artificial Opening Endoscopic, Diagnostic	Procedure	ICD-10-PCS
ODBK0ZX	Excision of Ascending Colon, Open Approach, Diagnostic	Procedure	ICD-10-PCS
ODBK3ZX	Excision of Ascending Colon, Percutaneous Approach, Diagnostic	Procedure	ICD-10-PCS
ODBK4ZX	Excision of Ascending Colon, Percutaneous Endoscopic Approach, Diagnostic	Procedure	ICD-10-PCS
ODBK7ZX	Excision of Ascending Colon, Via Natural or Artificial Opening, Diagnostic	Procedure	ICD-10-PCS
ODBK8ZX	Excision of Ascending Colon, Via Natural or Artificial Opening Endoscopic, Diagnostic	Procedure	ICD-10-PCS
ODBL0ZX	Excision of Transverse Colon, Open Approach, Diagnostic	Procedure	ICD-10-PCS
ODBL3ZX	Excision of Transverse Colon, Percutaneous Approach, Diagnostic	Procedure	ICD-10-PCS
ODBL4ZX	Excision of Transverse Colon, Percutaneous Endoscopic Approach, Diagnostic	Procedure	ICD-10-PCS
ODBL7ZX	Excision of Transverse Colon, Via Natural or Artificial Opening, Diagnostic	Procedure	ICD-10-PCS
ODBL8ZX	Excision of Transverse Colon, Via Natural or Artificial Opening Endoscopic, Diagnostic	Procedure	ICD-10-PCS
ODBM0ZX	Excision of Descending Colon, Open Approach, Diagnostic	Procedure	ICD-10-PCS
ODBM3ZX	Excision of Descending Colon, Percutaneous Approach, Diagnostic	Procedure	ICD-10-PCS
ODBM4ZX	Excision of Descending Colon, Percutaneous Endoscopic Approach, Diagnostic	Procedure	ICD-10-PCS
ODBM7ZX	Excision of Descending Colon, Via Natural or Artificial Opening, Diagnostic	Procedure	ICD-10-PCS
ODBM8ZX	Excision of Descending Colon, Via Natural or Artificial Opening Endoscopic, Diagnostic	Procedure	ICD-10-PCS
ODBN0ZX	Excision of Sigmoid Colon, Open Approach, Diagnostic	Procedure	ICD-10-PCS
ODBN3ZX	Excision of Sigmoid Colon, Percutaneous Approach, Diagnostic	Procedure	ICD-10-PCS
ODBN4ZX	Excision of Sigmoid Colon, Percutaneous Endoscopic Approach, Diagnostic	Procedure	ICD-10-PCS
ODBN7ZX	Excision of Sigmoid Colon, Via Natural or Artificial Opening, Diagnostic	Procedure	ICD-10-PCS
ODBN8ZX	Excision of Sigmoid Colon, Via Natural or Artificial Opening Endoscopic, Diagnostic	Procedure	ICD-10-PCS
ODBP0ZX	Excision of Rectum, Open Approach, Diagnostic	Procedure	ICD-10-PCS
ODBP3ZX	Excision of Rectum, Percutaneous Approach, Diagnostic	Procedure	ICD-10-PCS
ODBP4ZX	Excision of Rectum, Percutaneous Endoscopic Approach, Diagnostic	Procedure	ICD-10-PCS
ODBP7ZX	Excision of Rectum, Via Natural or Artificial Opening, Diagnostic	Procedure	ICD-10-PCS
ODBP8ZX	Excision of Rectum, Via Natural or Artificial Opening Endoscopic, Diagnostic	Procedure	ICD-10-PCS
ODBQ0ZX	Excision of Anus, Open Approach, Diagnostic	Procedure	ICD-10-PCS
ODBQ3ZX	Excision of Anus, Percutaneous Approach, Diagnostic	Procedure	ICD-10-PCS
ODBQ4ZX	Excision of Anus, Percutaneous Endoscopic Approach, Diagnostic	Procedure	ICD-10-PCS
ODBQ7ZX	Excision of Anus, Via Natural or Artificial Opening, Diagnostic	Procedure	ICD-10-PCS

Appendix B. List of Current Procedural Terminology, Fourth Edition (CPT-4), Healthcare Common Procedure Coding System, Level II (HCPCS), International Classification of Diseases, Ninth Revision, Clinical Modification (ICD-9-CM), and International Classification of Diseases, Tenth Revision, Procedural Coding System (ICD-10-PCS) Codes Used to Define Biopsy in this Request

Code	Description	Code Category	Code Type
0DBQ8ZX	Excision of Anus, Via Natural or Artificial Opening Endoscopic, Diagnostic	Procedure	ICD-10-PCS
0DBQXZX	Excision of Anus, External Approach, Diagnostic	Procedure	ICD-10-PCS
0DBR0ZX	Excision of Anal Sphincter, Open Approach, Diagnostic	Procedure	ICD-10-PCS
0DBR3ZX	Excision of Anal Sphincter, Percutaneous Approach, Diagnostic	Procedure	ICD-10-PCS
0DBR4ZX	Excision of Anal Sphincter, Percutaneous Endoscopic Approach, Diagnostic	Procedure	ICD-10-PCS
0DD83ZX	Extraction of Small Intestine, Percutaneous Approach, Diagnostic	Procedure	ICD-10-PCS
0DD84ZX	Extraction of Small Intestine, Percutaneous Endoscopic Approach, Diagnostic	Procedure	ICD-10-PCS
0DD88ZX	Extraction of Small Intestine, Via Natural or Artificial Opening Endoscopic, Diagnostic	Procedure	ICD-10-PCS
0DD93ZX	Extraction of Duodenum, Percutaneous Approach, Diagnostic	Procedure	ICD-10-PCS
0DD94ZX	Extraction of Duodenum, Percutaneous Endoscopic Approach, Diagnostic	Procedure	ICD-10-PCS
0DD98ZX	Extraction of Duodenum, Via Natural or Artificial Opening Endoscopic, Diagnostic	Procedure	ICD-10-PCS
0DDA3ZX	Extraction of Jejunum, Percutaneous Approach, Diagnostic	Procedure	ICD-10-PCS
0DDA4ZX	Extraction of Jejunum, Percutaneous Endoscopic Approach, Diagnostic	Procedure	ICD-10-PCS
0DDA8ZX	Extraction of Jejunum, Via Natural or Artificial Opening Endoscopic, Diagnostic	Procedure	ICD-10-PCS
0ddb3zx	Extraction of Ileum, Percutaneous Approach, Diagnostic	Procedure	ICD-10-PCS
0ddb4zx	Extraction of Ileum, Percutaneous Endoscopic Approach, Diagnostic	Procedure	ICD-10-PCS
0ddb8zx	Extraction of Ileum, Via Natural or Artificial Opening Endoscopic, Diagnostic	Procedure	ICD-10-PCS
0DDC3ZX	Extraction of Ileocecal Valve, Percutaneous Approach, Diagnostic	Procedure	ICD-10-PCS
0DDC4ZX	Extraction of Ileocecal Valve, Percutaneous Endoscopic Approach, Diagnostic	Procedure	ICD-10-PCS
0DDC8ZX	Extraction of Ileocecal Valve, Via Natural or Artificial Opening Endoscopic, Diagnostic	Procedure	ICD-10-PCS
0DDE3ZX	Extraction of Large Intestine, Percutaneous Approach, Diagnostic	Procedure	ICD-10-PCS
0DDE4ZX	Extraction of Large Intestine, Percutaneous Endoscopic Approach, Diagnostic	Procedure	ICD-10-PCS
0DDE8ZX	Extraction of Large Intestine, Via Natural or Artificial Opening Endoscopic, Diagnostic	Procedure	ICD-10-PCS
0DDF3ZX	Extraction of Right Large Intestine, Percutaneous Approach, Diagnostic	Procedure	ICD-10-PCS
0DDF4ZX	Extraction of Right Large Intestine, Percutaneous Endoscopic Approach, Diagnostic	Procedure	ICD-10-PCS
0DDF8ZX	Extraction of Right Large Intestine, Via Natural or Artificial Opening Endoscopic, Diagnostic	Procedure	ICD-10-PCS
0DDG3ZX	Extraction of Left Large Intestine, Percutaneous Approach, Diagnostic	Procedure	ICD-10-PCS
0DDG4ZX	Extraction of Left Large Intestine, Percutaneous Endoscopic Approach, Diagnostic	Procedure	ICD-10-PCS
0DDG8ZX	Extraction of Left Large Intestine, Via Natural or Artificial Opening Endoscopic, Diagnostic	Procedure	ICD-10-PCS
0DDH3ZX	Extraction of Cecum, Percutaneous Approach, Diagnostic	Procedure	ICD-10-PCS
0DDH4ZX	Extraction of Cecum, Percutaneous Endoscopic Approach, Diagnostic	Procedure	ICD-10-PCS
0DDH8ZX	Extraction of Cecum, Via Natural or Artificial Opening Endoscopic, Diagnostic	Procedure	ICD-10-PCS
0DDK3ZX	Extraction of Ascending Colon, Percutaneous Approach, Diagnostic	Procedure	ICD-10-PCS
0DDK4ZX	Extraction of Ascending Colon, Percutaneous Endoscopic Approach, Diagnostic	Procedure	ICD-10-PCS
0DDK8ZX	Extraction of Ascending Colon, Via Natural or Artificial Opening Endoscopic, Diagnostic	Procedure	ICD-10-PCS
0DDL3ZX	Extraction of Transverse Colon, Percutaneous Approach, Diagnostic	Procedure	ICD-10-PCS
0DDL4ZX	Extraction of Transverse Colon, Percutaneous Endoscopic Approach, Diagnostic	Procedure	ICD-10-PCS
0DDL8ZX	Extraction of Transverse Colon, Via Natural or Artificial Opening Endoscopic, Diagnostic	Procedure	ICD-10-PCS
0DDM3ZX	Extraction of Descending Colon, Percutaneous Approach, Diagnostic	Procedure	ICD-10-PCS
0DDM4ZX	Extraction of Descending Colon, Percutaneous Endoscopic Approach, Diagnostic	Procedure	ICD-10-PCS
0DDM8ZX	Extraction of Descending Colon, Via Natural or Artificial Opening Endoscopic, Diagnostic	Procedure	ICD-10-PCS
0DDN3ZX	Extraction of Sigmoid Colon, Percutaneous Approach, Diagnostic	Procedure	ICD-10-PCS
0DDN4ZX	Extraction of Sigmoid Colon, Percutaneous Endoscopic Approach, Diagnostic	Procedure	ICD-10-PCS
0DDN8ZX	Extraction of Sigmoid Colon, Via Natural or Artificial Opening Endoscopic, Diagnostic	Procedure	ICD-10-PCS

Appendix B. List of Current Procedural Terminology, Fourth Edition (CPT-4), Healthcare Common Procedure Coding System, Level II (HCPCS), International Classification of Diseases, Ninth Revision, Clinical Modification (ICD-9-CM), and International Classification of Diseases, Tenth Revision, Procedural Coding System (ICD-10-PCS) Codes Used to Define Biopsy in this Request

Code	Description	Code Category	Code Type
0DDP3ZX	Extraction of Rectum, Percutaneous Approach, Diagnostic	Procedure	ICD-10-PCS
0DDP4ZX	Extraction of Rectum, Percutaneous Endoscopic Approach, Diagnostic	Procedure	ICD-10-PCS
0DDP8ZX	Extraction of Rectum, Via Natural or Artificial Opening Endoscopic, Diagnostic	Procedure	ICD-10-PCS
0DDQ3ZX	Extraction of Anus, Percutaneous Approach, Diagnostic	Procedure	ICD-10-PCS
0DDQ4ZX	Extraction of Anus, Percutaneous Endoscopic Approach, Diagnostic	Procedure	ICD-10-PCS
0DDQ8ZX	Extraction of Anus, Via Natural or Artificial Opening Endoscopic, Diagnostic	Procedure	ICD-10-PCS
44010	Duodenotomy, for exploration, biopsy(s), or foreign body removal	Procedure	CPT-4
44020	Enterotomy, small intestine, other than duodenum; for exploration, biopsy(s), or foreign body removal	Procedure	CPT-4
44025	Colotomy, for exploration, biopsy(s), or foreign body removal	Procedure	CPT-4
44100	Biopsy of intestine by capsule, tube, peroral (1 or more specimens)	Procedure	CPT-4
44361	Small intestinal endoscopy, enteroscopy beyond second portion of duodenum, not including ileum; with biopsy, single or multiple	Procedure	CPT-4
44365	Small intestinal endoscopy, enteroscopy beyond second portion of duodenum, not including ileum; with removal of tumor(s), polyp(s), or other lesion(s) by hot biopsy forceps or bipolar cautery	Procedure	CPT-4
44369	Small intestinal endoscopy, enteroscopy beyond second portion of duodenum, not including ileum; with ablation of tumor(s), polyp(s), or other lesion(s) not amenable to removal by hot biopsy forceps, bipolar cautery or snare technique	Procedure	CPT-4
44377	Small intestinal endoscopy, enteroscopy beyond second portion of duodenum, including ileum; with biopsy, single or multiple	Procedure	CPT-4
44382	Ileoscopy, through stoma; with biopsy, single or multiple	Procedure	CPT-4
44386	Endoscopic evaluation of small intestinal pouch (e.g., Kock pouch, ileal reservoir [S or J]); with biopsy, single or multiple	Procedure	CPT-4
44389	Colonoscopy through stoma; with biopsy, single or multiple	Procedure	CPT-4
44392	Colonoscopy through stoma; with removal of tumor(s), polyp(s), or other lesion(s) by hot biopsy forceps	Procedure	CPT-4
44393	Colonoscopy through stoma; with ablation of tumor(s), polyp(s), or other lesion(s) not amenable to removal by hot biopsy forceps, bipolar cautery or snare technique	Procedure	CPT-4
44407	Colonoscopy through stoma; with transendoscopic ultrasound guided intramural or transmural fine needle aspiration/biopsy(s), includes endoscopic ultrasound examination limited to the sigmoid, descending, transverse, or ascending colon and cecum and adjacent structures	Procedure	CPT-4
45100	Biopsy of anorectal wall, anal approach (e.g., congenital megacolon)	Procedure	CPT-4
45305	Proctosigmoidoscopy, rigid; with biopsy, single or multiple	Procedure	CPT-4
45308	Proctosigmoidoscopy, rigid; with removal of single tumor, polyp, or other lesion by hot biopsy forceps or bipolar cautery	Procedure	CPT-4
45315	Proctosigmoidoscopy, rigid; with removal of multiple tumors, polyps, or other lesions by hot biopsy forceps, bipolar cautery or snare technique	Procedure	CPT-4
45320	Proctosigmoidoscopy, rigid; with ablation of tumor(s), polyp(s), or other lesion(s) not amenable to removal by hot biopsy forceps, bipolar cautery or snare technique (e.g., laser)	Procedure	CPT-4
45331	Sigmoidoscopy, flexible; with biopsy, single or multiple	Procedure	CPT-4
45333	Sigmoidoscopy, flexible; with removal of tumor(s), polyp(s), or other lesion(s) by hot biopsy forceps	Procedure	CPT-4

Appendix B. List of Current Procedural Terminology, Fourth Edition (CPT-4), Healthcare Common Procedure Coding System, Level II (HCPCS), International Classification of Diseases, Ninth Revision, Clinical Modification (ICD-9-CM), and International Classification of Diseases, Tenth Revision, Procedural Coding System (ICD-10-PCS) Codes Used to Define Biopsy in this Request

Code	Description	Code Category	Code Type
45339	Sigmoidoscopy, flexible; with ablation of tumor(s), polyp(s), or other lesion(s) not amenable to removal by hot biopsy forceps, bipolar cautery or snare technique	Procedure	CPT-4
45342	Sigmoidoscopy, flexible; with transendoscopic ultrasound guided intramural or transmural fine needle aspiration/biopsy(s)	Procedure	CPT-4
45380	Colonoscopy, flexible; with biopsy, single or multiple	Procedure	CPT-4
45383	Colonoscopy, flexible, proximal to splenic flexure; with ablation of tumor(s), polyp(s), or other lesion(s) not amenable to removal by hot biopsy forceps, bipolar cautery or snare technique	Procedure	CPT-4
45384	Colonoscopy, flexible; with removal of tumor(s), polyp(s), or other lesion(s) by hot biopsy forceps	Procedure	CPT-4
45392	Colonoscopy, flexible; with transendoscopic ultrasound guided intramural or transmural fine needle aspiration/biopsy(s), includes endoscopic ultrasound examination limited to the rectum, sigmoid, descending, transverse, or ascending colon and cecum, and adjacent structures	Procedure	CPT-4
46606	Anoscopy; with biopsy, single or multiple	Procedure	CPT-4
46607	Anoscopy; with high-resolution magnification (HRA) (e.g., colposcope, operating microscope) and chemical agent enhancement, with biopsy, single or multiple	Procedure	CPT-4
46610	Anoscopy; with removal of single tumor, polyp, or other lesion by hot biopsy forceps or bipolar cautery	Procedure	CPT-4
46612	Anoscopy; with removal of multiple tumors, polyps, or other lesions by hot biopsy forceps, bipolar cautery or snare technique	Procedure	CPT-4
46615	Anoscopy; with ablation of tumor(s), polyp(s), or other lesion(s) not amenable to removal by hot biopsy forceps, bipolar cautery or snare technique	Procedure	CPT-4
88300	Level I - Surgical pathology, gross examination only	Procedure	CPT-4
88302	Level II - Surgical pathology, gross and microscopic examination Appendix, incidental Fallopian tube, sterilization Fingers/toes, amputation, traumatic Foreskin, newborn Hernia sac, any location Hydrocele sac Nerve Skin, plastic repair Sympathetic ganglion Testis, castration Vaginal mucosa, incidental Vas deferens, sterilization	Procedure	CPT-4
ODDQZX	Extraction of Anus, External Approach, Diagnostic	Procedure	ICD-10-PCS
Biopsy ICD-9-CM			
45.00	Incision of intestine, not otherwise specified	Procedure	ICD-9-CM
45.01	Incision of duodenum	Procedure	ICD-9-CM
45.02	Other incision of small intestine	Procedure	ICD-9-CM
45.03	Incision of large intestine	Procedure	ICD-9-CM
45.14	Closed [endoscopic] biopsy of small intestine	Procedure	ICD-9-CM
45.15	Open biopsy of small intestine	Procedure	ICD-9-CM
45.16	Esophagogastroduodenoscopy (EGD) with closed biopsy	Procedure	ICD-9-CM
45.25	Closed [endoscopic] biopsy of large intestine	Procedure	ICD-9-CM
45.26	Open biopsy of large intestine	Procedure	ICD-9-CM
45.27	Intestinal biopsy, site unspecified	Procedure	ICD-9-CM
45.30	Endoscopic excision or destruction of lesion of duodenum	Procedure	ICD-9-CM
45.31	Other local excision of lesion of duodenum	Procedure	ICD-9-CM
45.32	Other destruction of lesion of duodenum	Procedure	ICD-9-CM
45.33	Local excision of lesion or tissue of small intestine, except duodenum	Procedure	ICD-9-CM
45.34	Other destruction of lesion of small intestine, except duodenum	Procedure	ICD-9-CM
45.41	Excision of lesion or tissue of large intestine	Procedure	ICD-9-CM

Appendix B. List of Current Procedural Terminology, Fourth Edition (CPT-4), Healthcare Common Procedure Coding System, Level II (HCPCS), International Classification of Diseases, Ninth Revision, Clinical Modification (ICD-9-CM), and International Classification of Diseases, Tenth Revision, Procedural Coding System (ICD-10-PCS) Codes Used to Define Biopsy in this Request

Code	Description	Code Category	Code Type
45.42	Endoscopic polypectomy of large intestine	Procedure	ICD-9-CM
45.43	Endoscopic destruction of other lesion or tissue of large intestine	Procedure	ICD-9-CM
45.49	Other destruction of lesion of large intestine	Procedure	ICD-9-CM
45.79	Other and unspecified partial excision of large intestine	Procedure	ICD-9-CM
48.24	Closed (endoscopic) biopsy of rectum	Procedure	ICD-9-CM
48.25	Open biopsy of rectum	Procedure	ICD-9-CM
48.26	Biopsy of perirectal tissue	Procedure	ICD-9-CM
48.35	Local excision of rectal lesion or tissue	Procedure	ICD-9-CM
48.36	[Endoscopic] polypectomy of rectum	Procedure	ICD-9-CM
48.82	Excision of perirectal tissue	Procedure	ICD-9-CM
49.02	Other incision of perianal tissue	Procedure	ICD-9-CM
49.04	Other excision of perianal tissue	Procedure	ICD-9-CM
49.22	Biopsy of perianal tissue	Procedure	ICD-9-CM
49.23	Biopsy of anus	Procedure	ICD-9-CM
49.31	Endoscopic excision or destruction of lesion or tissue of anus	Procedure	ICD-9-CM
49.39	Other local excision or destruction of lesion or tissue of anus	Procedure	ICD-9-CM
50.12	Open biopsy of liver	Procedure	ICD-9-CM
44010	Duodenotomy, for exploration, biopsy(s), or foreign body removal	Procedure	CPT-4
44020	Enterotomy, small intestine, other than duodenum; for exploration, biopsy(s), or foreign body removal	Procedure	CPT-4
44025	Colotomy, for exploration, biopsy(s), or foreign body removal	Procedure	CPT-4
44100	Biopsy of intestine by capsule, tube, peroral (1 or more specimens)	Procedure	CPT-4
44361	Small intestinal endoscopy, enteroscopy beyond second portion of duodenum, not including ileum; with biopsy, single or multiple	Procedure	CPT-4
44365	Small intestinal endoscopy, enteroscopy beyond second portion of duodenum, not including ileum; with removal of tumor(s), polyp(s), or other lesion(s) by hot biopsy forceps or bipolar cautery	Procedure	CPT-4
44369	Small intestinal endoscopy, enteroscopy beyond second portion of duodenum, not including ileum; with ablation of tumor(s), polyp(s), or other lesion(s) not amenable to removal by hot biopsy forceps, bipolar cautery or snare technique	Procedure	CPT-4
44377	Small intestinal endoscopy, enteroscopy beyond second portion of duodenum, including ileum; with biopsy, single or multiple	Procedure	CPT-4
44382	Ileoscopy, through stoma; with biopsy, single or multiple	Procedure	CPT-4
44386	Endoscopic evaluation of small intestinal pouch (e.g., Kock pouch, ileal reservoir [S or J]); with biopsy, single or multiple	Procedure	CPT-4
44389	Colonoscopy through stoma; with biopsy, single or multiple	Procedure	CPT-4
44392	Colonoscopy through stoma; with removal of tumor(s), polyp(s), or other lesion(s) by hot biopsy forceps	Procedure	CPT-4
44393	Colonoscopy through stoma; with ablation of tumor(s), polyp(s), or other lesion(s) not amenable to removal by hot biopsy forceps, bipolar cautery or snare technique	Procedure	CPT-4
44407	Colonoscopy through stoma; with transendoscopic ultrasound guided intramural or transmural fine needle aspiration/biopsy(s), includes endoscopic ultrasound examination limited to the sigmoid, descending, transverse, or ascending colon and cecum and adjacent structures	Procedure	CPT-4
45100	Biopsy of anorectal wall, anal approach (e.g., congenital megacolon)	Procedure	CPT-4
45305	Proctosigmoidoscopy, rigid; with biopsy, single or multiple	Procedure	CPT-4

Appendix B. List of Current Procedural Terminology, Fourth Edition (CPT-4), Healthcare Common Procedure Coding System, Level II (HCPCS), International Classification of Diseases, Ninth Revision, Clinical Modification (ICD-9-CM), and International Classification of Diseases, Tenth Revision, Procedural Coding System (ICD-10-PCS) Codes Used to Define Biopsy in this Request

Code	Description	Code Category	Code Type
45308	Proctosigmoidoscopy, rigid; with removal of single tumor, polyp, or other lesion by hot biopsy forceps or bipolar cautery	Procedure	CPT-4
45315	Proctosigmoidoscopy, rigid; with removal of multiple tumors, polyps, or other lesions by hot biopsy forceps, bipolar cautery or snare technique	Procedure	CPT-4
45320	Proctosigmoidoscopy, rigid; with ablation of tumor(s), polyp(s), or other lesion(s) not amenable to removal by hot biopsy forceps, bipolar cautery or snare technique (e.g., laser)	Procedure	CPT-4
45331	Sigmoidoscopy, flexible; with biopsy, single or multiple	Procedure	CPT-4
45333	Sigmoidoscopy, flexible; with removal of tumor(s), polyp(s), or other lesion(s) by hot biopsy forceps	Procedure	CPT-4
45339	Sigmoidoscopy, flexible; with ablation of tumor(s), polyp(s), or other lesion(s) not amenable to removal by hot biopsy forceps, bipolar cautery or snare technique	Procedure	CPT-4
45342	Sigmoidoscopy, flexible; with transendoscopic ultrasound guided intramural or transmural fine needle aspiration/biopsy(s)	Procedure	CPT-4
45380	Colonoscopy, flexible; with biopsy, single or multiple	Procedure	CPT-4
45383	Colonoscopy, flexible, proximal to splenic flexure; with ablation of tumor(s), polyp(s), or other lesion(s) not amenable to removal by hot biopsy forceps, bipolar cautery or snare technique	Procedure	CPT-4
45384	Colonoscopy, flexible; with removal of tumor(s), polyp(s), or other lesion(s) by hot biopsy forceps	Procedure	CPT-4
45392	Colonoscopy, flexible; with transendoscopic ultrasound guided intramural or transmural fine needle aspiration/biopsy(s), includes endoscopic ultrasound examination limited to the rectum, sigmoid, descending, transverse, or ascending colon and cecum, and adjacent structures	Procedure	CPT-4
46606	Anoscopy; with biopsy, single or multiple	Procedure	CPT-4
46607	Anoscopy; with high-resolution magnification (HRA) (e.g., colposcope, operating microscope) and chemical agent enhancement, with biopsy, single or multiple	Procedure	CPT-4
46610	Anoscopy; with removal of single tumor, polyp, or other lesion by hot biopsy forceps or bipolar cautery	Procedure	CPT-4
46612	Anoscopy; with removal of multiple tumors, polyps, or other lesions by hot biopsy forceps, bipolar cautery or snare technique	Procedure	CPT-4
46615	Anoscopy; with ablation of tumor(s), polyp(s), or other lesion(s) not amenable to removal by hot biopsy forceps, bipolar cautery or snare technique	Procedure	CPT-4
88300	Level I - Surgical pathology, gross examination only	Procedure	CPT-4
88302	Level II - Surgical pathology, gross and microscopic examination Appendix, incidental Fallopian tube, sterilization Fingers/toes, amputation, traumatic Foreskin, newborn Hernia sac, any location Hydrocele sac Nerve Skin, plastic repair Sympathetic ganglion Testis, castration Vaginal mucosa, incidental Vas deferens, sterilization	Procedure	CPT-4
Biopsy ICD-10-PCS			
0D5E4ZZ	Destruction of Large Intestine, Percutaneous Endoscopic Approach	Procedure	ICD-10-PCS
0D980ZX	Drainage of Small Intestine, Open Approach, Diagnostic	Procedure	ICD-10-PCS
0D983ZX	Drainage of Small Intestine, Percutaneous Approach, Diagnostic	Procedure	ICD-10-PCS
0D984ZX	Drainage of Small Intestine, Percutaneous Endoscopic Approach, Diagnostic	Procedure	ICD-10-PCS
0D987ZX	Drainage of Small Intestine, Via Natural or Artificial Opening, Diagnostic	Procedure	ICD-10-PCS
0D988ZX	Drainage of Small Intestine, Via Natural or Artificial Opening Endoscopic, Diagnostic	Procedure	ICD-10-PCS
0D990ZX	Drainage of Duodenum, Open Approach, Diagnostic	Procedure	ICD-10-PCS

Appendix B. List of Current Procedural Terminology, Fourth Edition (CPT-4), Healthcare Common Procedure Coding System, Level II (HCPCS), International Classification of Diseases, Ninth Revision, Clinical Modification (ICD-9-CM), and International Classification of Diseases, Tenth Revision, Procedural Coding System (ICD-10-PCS) Codes Used to Define Biopsy in this Request

Code	Description	Code Category	Code Type
0D993ZX	Drainage of Duodenum, Percutaneous Approach, Diagnostic	Procedure	ICD-10-PCS
0D994ZX	Drainage of Duodenum, Percutaneous Endoscopic Approach, Diagnostic	Procedure	ICD-10-PCS
0D997ZX	Drainage of Duodenum, Via Natural or Artificial Opening, Diagnostic	Procedure	ICD-10-PCS
0D998ZX	Drainage of Duodenum, Via Natural or Artificial Opening Endoscopic, Diagnostic	Procedure	ICD-10-PCS
0D9A0ZX	Drainage of Jejunum, Open Approach, Diagnostic	Procedure	ICD-10-PCS
0D9A3ZX	Drainage of Jejunum, Percutaneous Approach, Diagnostic	Procedure	ICD-10-PCS
0D9A4ZX	Drainage of Jejunum, Percutaneous Endoscopic Approach, Diagnostic	Procedure	ICD-10-PCS
0D9A7ZX	Drainage of Jejunum, Via Natural or Artificial Opening, Diagnostic	Procedure	ICD-10-PCS
0D9A8ZX	Drainage of Jejunum, Via Natural or Artificial Opening Endoscopic, Diagnostic	Procedure	ICD-10-PCS
0D9B0ZX	Drainage of Ileum, Open Approach, Diagnostic	Procedure	ICD-10-PCS
0D9B3ZX	Drainage of Ileum, Percutaneous Approach, Diagnostic	Procedure	ICD-10-PCS
0D9B4ZX	Drainage of Ileum, Percutaneous Endoscopic Approach, Diagnostic	Procedure	ICD-10-PCS
0D9B7ZX	Drainage of Ileum, Via Natural or Artificial Opening, Diagnostic	Procedure	ICD-10-PCS
0D9B8ZX	Drainage of Ileum, Via Natural or Artificial Opening Endoscopic, Diagnostic	Procedure	ICD-10-PCS
0D9C0ZX	Drainage of Ileocecal Valve, Open Approach, Diagnostic	Procedure	ICD-10-PCS
0D9C3ZX	Drainage of Ileocecal Valve, Percutaneous Approach, Diagnostic	Procedure	ICD-10-PCS
0D9C4ZX	Drainage of Ileocecal Valve, Percutaneous Endoscopic Approach, Diagnostic	Procedure	ICD-10-PCS
0D9C7ZX	Drainage of Ileocecal Valve, Via Natural or Artificial Opening, Diagnostic	Procedure	ICD-10-PCS
0D9C8ZX	Drainage of Ileocecal Valve, Via Natural or Artificial Opening Endoscopic, Diagnostic	Procedure	ICD-10-PCS
0D9E0ZX	Drainage of Large Intestine, Open Approach, Diagnostic	Procedure	ICD-10-PCS
0D9E3ZX	Drainage of Large Intestine, Percutaneous Approach, Diagnostic	Procedure	ICD-10-PCS
0D9E4ZX	Drainage of Large Intestine, Percutaneous Endoscopic Approach, Diagnostic	Procedure	ICD-10-PCS
0D9E7ZX	Drainage of Large Intestine, Via Natural or Artificial Opening, Diagnostic	Procedure	ICD-10-PCS
0D9E8ZX	Drainage of Large Intestine, Via Natural or Artificial Opening Endoscopic, Diagnostic	Procedure	ICD-10-PCS
0D9F0ZX	Drainage of Right Large Intestine, Open Approach, Diagnostic	Procedure	ICD-10-PCS
0D9F3ZX	Drainage of Right Large Intestine, Percutaneous Approach, Diagnostic	Procedure	ICD-10-PCS
0D9F4ZX	Drainage of Right Large Intestine, Percutaneous Endoscopic Approach, Diagnostic	Procedure	ICD-10-PCS
0D9F7ZX	Drainage of Right Large Intestine, Via Natural or Artificial Opening, Diagnostic	Procedure	ICD-10-PCS
0D9F8ZX	Drainage of Right Large Intestine, Via Natural or Artificial Opening Endoscopic, Diagnostic	Procedure	ICD-10-PCS
0D9G0ZX	Drainage of Left Large Intestine, Open Approach, Diagnostic	Procedure	ICD-10-PCS
0D9G3ZX	Drainage of Left Large Intestine, Percutaneous Approach, Diagnostic	Procedure	ICD-10-PCS
0D9G4ZX	Drainage of Left Large Intestine, Percutaneous Endoscopic Approach, Diagnostic	Procedure	ICD-10-PCS
0D9G7ZX	Drainage of Left Large Intestine, Via Natural or Artificial Opening, Diagnostic	Procedure	ICD-10-PCS
0D9G8ZX	Drainage of Left Large Intestine, Via Natural or Artificial Opening Endoscopic, Diagnostic	Procedure	ICD-10-PCS
0D9H0ZX	Drainage of Cecum, Open Approach, Diagnostic	Procedure	ICD-10-PCS
0D9H3ZX	Drainage of Cecum, Percutaneous Approach, Diagnostic	Procedure	ICD-10-PCS
0D9H4ZX	Drainage of Cecum, Percutaneous Endoscopic Approach, Diagnostic	Procedure	ICD-10-PCS
0D9H7ZX	Drainage of Cecum, Via Natural or Artificial Opening, Diagnostic	Procedure	ICD-10-PCS
0D9H8ZX	Drainage of Cecum, Via Natural or Artificial Opening Endoscopic, Diagnostic	Procedure	ICD-10-PCS
0D9J0ZX	Drainage of Appendix, Open Approach, Diagnostic	Procedure	ICD-10-PCS
0D9K0ZX	Drainage of Ascending Colon, Open Approach, Diagnostic	Procedure	ICD-10-PCS
0D9K3ZX	Drainage of Ascending Colon, Percutaneous Approach, Diagnostic	Procedure	ICD-10-PCS
0D9K4ZX	Drainage of Ascending Colon, Percutaneous Endoscopic Approach, Diagnostic	Procedure	ICD-10-PCS
0D9K7ZX	Drainage of Ascending Colon, Via Natural or Artificial Opening, Diagnostic	Procedure	ICD-10-PCS
0D9K8ZX	Drainage of Ascending Colon, Via Natural or Artificial Opening Endoscopic, Diagnostic	Procedure	ICD-10-PCS

Appendix B. List of Current Procedural Terminology, Fourth Edition (CPT-4), Healthcare Common Procedure Coding System, Level II (HCPCS), International Classification of Diseases, Ninth Revision, Clinical Modification (ICD-9-CM), and International Classification of Diseases, Tenth Revision, Procedural Coding System (ICD-10-PCS) Codes Used to Define Biopsy in this Request

Code	Description	Code Category	Code Type
0D9L0ZX	Drainage of Transverse Colon, Open Approach, Diagnostic	Procedure	ICD-10-PCS
0D9L3ZX	Drainage of Transverse Colon, Percutaneous Approach, Diagnostic	Procedure	ICD-10-PCS
0D9L4ZX	Drainage of Transverse Colon, Percutaneous Endoscopic Approach, Diagnostic	Procedure	ICD-10-PCS
0D9L7ZX	Drainage of Transverse Colon, Via Natural or Artificial Opening, Diagnostic	Procedure	ICD-10-PCS
0D9L8ZX	Drainage of Transverse Colon, Via Natural or Artificial Opening Endoscopic, Diagnostic	Procedure	ICD-10-PCS
0D9M0ZX	Drainage of Descending Colon, Open Approach, Diagnostic	Procedure	ICD-10-PCS
0D9M3ZX	Drainage of Descending Colon, Percutaneous Approach, Diagnostic	Procedure	ICD-10-PCS
0D9M4ZX	Drainage of Descending Colon, Percutaneous Endoscopic Approach, Diagnostic	Procedure	ICD-10-PCS
0D9M7ZX	Drainage of Descending Colon, Via Natural or Artificial Opening, Diagnostic	Procedure	ICD-10-PCS
0D9M8ZX	Drainage of Descending Colon, Via Natural or Artificial Opening Endoscopic, Diagnostic	Procedure	ICD-10-PCS
0D9N0ZX	Drainage of Sigmoid Colon, Open Approach, Diagnostic	Procedure	ICD-10-PCS
0D9N3ZX	Drainage of Sigmoid Colon, Percutaneous Approach, Diagnostic	Procedure	ICD-10-PCS
0D9N4ZX	Drainage of Sigmoid Colon, Percutaneous Endoscopic Approach, Diagnostic	Procedure	ICD-10-PCS
0D9N7ZX	Drainage of Sigmoid Colon, Via Natural or Artificial Opening, Diagnostic	Procedure	ICD-10-PCS
0D9N8ZX	Drainage of Sigmoid Colon, Via Natural or Artificial Opening Endoscopic, Diagnostic	Procedure	ICD-10-PCS
0D9P0ZX	Drainage of Rectum, Open Approach, Diagnostic	Procedure	ICD-10-PCS
0D9P3ZX	Drainage of Rectum, Percutaneous Approach, Diagnostic	Procedure	ICD-10-PCS
0D9P4ZX	Drainage of Rectum, Percutaneous Endoscopic Approach, Diagnostic	Procedure	ICD-10-PCS
0D9P7ZX	Drainage of Rectum, Via Natural or Artificial Opening, Diagnostic	Procedure	ICD-10-PCS
0D9P8ZX	Drainage of Rectum, Via Natural or Artificial Opening Endoscopic, Diagnostic	Procedure	ICD-10-PCS
0D9Q0ZX	Drainage of Anus, Open Approach, Diagnostic	Procedure	ICD-10-PCS
0D9Q3ZX	Drainage of Anus, Percutaneous Approach, Diagnostic	Procedure	ICD-10-PCS
0DB80ZX	Excision of Small Intestine, Open Approach, Diagnostic	Procedure	ICD-10-PCS
0DB83ZX	Excision of Small Intestine, Percutaneous Approach, Diagnostic	Procedure	ICD-10-PCS
0DB84ZX	Excision of Small Intestine, Percutaneous Endoscopic Approach, Diagnostic	Procedure	ICD-10-PCS
0DB87ZX	Excision of Small Intestine, Via Natural or Artificial Opening, Diagnostic	Procedure	ICD-10-PCS
0DB88ZX	Excision of Small Intestine, Via Natural or Artificial Opening Endoscopic, Diagnostic	Procedure	ICD-10-PCS
0DB93ZX	Excision of Duodenum, Percutaneous Approach, Diagnostic	Procedure	ICD-10-PCS
0DB94ZX	Excision of Duodenum, Percutaneous Endoscopic Approach, Diagnostic	Procedure	ICD-10-PCS
0DB97ZX	Excision of Duodenum, Via Natural or Artificial Opening, Diagnostic	Procedure	ICD-10-PCS
0DB98ZX	Excision of Duodenum, Via Natural or Artificial Opening Endoscopic, Diagnostic	Procedure	ICD-10-PCS
0DBA0ZX	Excision of Jejunum, Open Approach, Diagnostic	Procedure	ICD-10-PCS
0DBA3ZX	Excision of Jejunum, Percutaneous Approach, Diagnostic	Procedure	ICD-10-PCS
0DBA4ZX	Excision of Jejunum, Percutaneous Endoscopic Approach, Diagnostic	Procedure	ICD-10-PCS
0DBA7ZX	Excision of Jejunum, Via Natural or Artificial Opening, Diagnostic	Procedure	ICD-10-PCS
0DBA8ZX	Excision of Jejunum, Via Natural or Artificial Opening Endoscopic, Diagnostic	Procedure	ICD-10-PCS
0DBB0ZX	Excision of Ileum, Open Approach, Diagnostic	Procedure	ICD-10-PCS
0DBB3ZX	Excision of Ileum, Percutaneous Approach, Diagnostic	Procedure	ICD-10-PCS
0DBB4ZX	Excision of Ileum, Percutaneous Endoscopic Approach, Diagnostic	Procedure	ICD-10-PCS
0DBB7ZX	Excision of Ileum, Via Natural or Artificial Opening, Diagnostic	Procedure	ICD-10-PCS
0DBB8ZX	Excision of Ileum, Via Natural or Artificial Opening Endoscopic, Diagnostic	Procedure	ICD-10-PCS
0DBC0ZX	Excision of Ileocecal Valve, Open Approach, Diagnostic	Procedure	ICD-10-PCS
0DBC3ZX	Excision of Ileocecal Valve, Percutaneous Approach, Diagnostic	Procedure	ICD-10-PCS
0DBC4ZX	Excision of Ileocecal Valve, Percutaneous Endoscopic Approach, Diagnostic	Procedure	ICD-10-PCS
0DBC7ZX	Excision of Ileocecal Valve, Via Natural or Artificial Opening, Diagnostic	Procedure	ICD-10-PCS

Appendix B. List of Current Procedural Terminology, Fourth Edition (CPT-4), Healthcare Common Procedure Coding System, Level II (HCPCS), International Classification of Diseases, Ninth Revision, Clinical Modification (ICD-9-CM), and International Classification of Diseases, Tenth Revision, Procedural Coding System (ICD-10-PCS) Codes Used to Define Biopsy in this Request

Code	Description	Code Category	Code Type
ODBC8ZX	Excision of Ileocecal Valve, Via Natural or Artificial Opening Endoscopic, Diagnostic	Procedure	ICD-10-PCS
ODBE0ZX	Excision of Large Intestine, Open Approach, Diagnostic	Procedure	ICD-10-PCS
ODBE3ZX	Excision of Large Intestine, Percutaneous Approach, Diagnostic	Procedure	ICD-10-PCS
ODBE4ZX	Excision of Large Intestine, Percutaneous Endoscopic Approach, Diagnostic	Procedure	ICD-10-PCS
ODBE7ZX	Excision of Large Intestine, Via Natural or Artificial Opening, Diagnostic	Procedure	ICD-10-PCS
ODBE8ZX	Excision of Large Intestine, Via Natural or Artificial Opening Endoscopic, Diagnostic	Procedure	ICD-10-PCS
ODBF0ZX	Excision of Right Large Intestine, Open Approach, Diagnostic	Procedure	ICD-10-PCS
ODBF3ZX	Excision of Right Large Intestine, Percutaneous Approach, Diagnostic	Procedure	ICD-10-PCS
ODBF4ZX	Excision of Right Large Intestine, Percutaneous Endoscopic Approach, Diagnostic	Procedure	ICD-10-PCS
ODBF7ZX	Excision of Right Large Intestine, Via Natural or Artificial Opening, Diagnostic	Procedure	ICD-10-PCS
ODBF8ZX	Excision of Right Large Intestine, Via Natural or Artificial Opening Endoscopic, Diagnostic	Procedure	ICD-10-PCS
ODBG0ZX	Excision of Left Large Intestine, Open Approach, Diagnostic	Procedure	ICD-10-PCS
ODBG3ZX	Excision of Left Large Intestine, Percutaneous Approach, Diagnostic	Procedure	ICD-10-PCS
ODBG4ZX	Excision of Left Large Intestine, Percutaneous Endoscopic Approach, Diagnostic	Procedure	ICD-10-PCS
ODBG7ZX	Excision of Left Large Intestine, Via Natural or Artificial Opening, Diagnostic	Procedure	ICD-10-PCS
ODBG8ZX	Excision of Left Large Intestine, Via Natural or Artificial Opening Endoscopic, Diagnostic	Procedure	ICD-10-PCS
ODBH0ZX	Excision of Cecum, Open Approach, Diagnostic	Procedure	ICD-10-PCS
ODBH3ZX	Excision of Cecum, Percutaneous Approach, Diagnostic	Procedure	ICD-10-PCS
ODBH4ZX	Excision of Cecum, Percutaneous Endoscopic Approach, Diagnostic	Procedure	ICD-10-PCS
ODBH7ZX	Excision of Cecum, Via Natural or Artificial Opening, Diagnostic	Procedure	ICD-10-PCS
ODBH8ZX	Excision of Cecum, Via Natural or Artificial Opening Endoscopic, Diagnostic	Procedure	ICD-10-PCS
ODBK0ZX	Excision of Ascending Colon, Open Approach, Diagnostic	Procedure	ICD-10-PCS
ODBK3ZX	Excision of Ascending Colon, Percutaneous Approach, Diagnostic	Procedure	ICD-10-PCS
ODBK4ZX	Excision of Ascending Colon, Percutaneous Endoscopic Approach, Diagnostic	Procedure	ICD-10-PCS
ODBK7ZX	Excision of Ascending Colon, Via Natural or Artificial Opening, Diagnostic	Procedure	ICD-10-PCS
ODBK8ZX	Excision of Ascending Colon, Via Natural or Artificial Opening Endoscopic, Diagnostic	Procedure	ICD-10-PCS
ODBL0ZX	Excision of Transverse Colon, Open Approach, Diagnostic	Procedure	ICD-10-PCS
ODBL3ZX	Excision of Transverse Colon, Percutaneous Approach, Diagnostic	Procedure	ICD-10-PCS
ODBL4ZX	Excision of Transverse Colon, Percutaneous Endoscopic Approach, Diagnostic	Procedure	ICD-10-PCS
ODBL7ZX	Excision of Transverse Colon, Via Natural or Artificial Opening, Diagnostic	Procedure	ICD-10-PCS
ODBL8ZX	Excision of Transverse Colon, Via Natural or Artificial Opening Endoscopic, Diagnostic	Procedure	ICD-10-PCS
ODBM0ZX	Excision of Descending Colon, Open Approach, Diagnostic	Procedure	ICD-10-PCS
ODBM3ZX	Excision of Descending Colon, Percutaneous Approach, Diagnostic	Procedure	ICD-10-PCS
ODBM4ZX	Excision of Descending Colon, Percutaneous Endoscopic Approach, Diagnostic	Procedure	ICD-10-PCS
ODBM7ZX	Excision of Descending Colon, Via Natural or Artificial Opening, Diagnostic	Procedure	ICD-10-PCS
ODBM8ZX	Excision of Descending Colon, Via Natural or Artificial Opening Endoscopic, Diagnostic	Procedure	ICD-10-PCS
ODBN0ZX	Excision of Sigmoid Colon, Open Approach, Diagnostic	Procedure	ICD-10-PCS
ODBN3ZX	Excision of Sigmoid Colon, Percutaneous Approach, Diagnostic	Procedure	ICD-10-PCS
ODBN4ZX	Excision of Sigmoid Colon, Percutaneous Endoscopic Approach, Diagnostic	Procedure	ICD-10-PCS
ODBN7ZX	Excision of Sigmoid Colon, Via Natural or Artificial Opening, Diagnostic	Procedure	ICD-10-PCS
ODBN8ZX	Excision of Sigmoid Colon, Via Natural or Artificial Opening Endoscopic, Diagnostic	Procedure	ICD-10-PCS
ODBP0ZX	Excision of Rectum, Open Approach, Diagnostic	Procedure	ICD-10-PCS
ODBP3ZX	Excision of Rectum, Percutaneous Approach, Diagnostic	Procedure	ICD-10-PCS
ODBP4ZX	Excision of Rectum, Percutaneous Endoscopic Approach, Diagnostic	Procedure	ICD-10-PCS
ODBP7ZX	Excision of Rectum, Via Natural or Artificial Opening, Diagnostic	Procedure	ICD-10-PCS

Appendix B. List of Current Procedural Terminology, Fourth Edition (CPT-4), Healthcare Common Procedure Coding System, Level II (HCPCS), International Classification of Diseases, Ninth Revision, Clinical Modification (ICD-9-CM), and International Classification of Diseases, Tenth Revision, Procedural Coding System (ICD-10-PCS) Codes Used to Define Biopsy in this Request

Code	Description	Code Category	Code Type
0DBP8ZX	Excision of Rectum, Via Natural or Artificial Opening Endoscopic, Diagnostic	Procedure	ICD-10-PCS
0DBQ0ZX	Excision of Anus, Open Approach, Diagnostic	Procedure	ICD-10-PCS
0DBQ3ZX	Excision of Anus, Percutaneous Approach, Diagnostic	Procedure	ICD-10-PCS
0DBQ4ZX	Excision of Anus, Percutaneous Endoscopic Approach, Diagnostic	Procedure	ICD-10-PCS
0DBQ7ZX	Excision of Anus, Via Natural or Artificial Opening, Diagnostic	Procedure	ICD-10-PCS
0DBQ8ZX	Excision of Anus, Via Natural or Artificial Opening Endoscopic, Diagnostic	Procedure	ICD-10-PCS
0DBQXZX	Excision of Anus, External Approach, Diagnostic	Procedure	ICD-10-PCS
0DBR0ZX	Excision of Anal Sphincter, Open Approach, Diagnostic	Procedure	ICD-10-PCS
0DBR3ZX	Excision of Anal Sphincter, Percutaneous Approach, Diagnostic	Procedure	ICD-10-PCS
0DBR4ZX	Excision of Anal Sphincter, Percutaneous Endoscopic Approach, Diagnostic	Procedure	ICD-10-PCS
0DD83ZX	Extraction of Small Intestine, Percutaneous Approach, Diagnostic	Procedure	ICD-10-PCS
0DD84ZX	Extraction of Small Intestine, Percutaneous Endoscopic Approach, Diagnostic	Procedure	ICD-10-PCS
0DD88ZX	Extraction of Small Intestine, Via Natural or Artificial Opening Endoscopic, Diagnostic	Procedure	ICD-10-PCS
0DD93ZX	Extraction of Duodenum, Percutaneous Approach, Diagnostic	Procedure	ICD-10-PCS
0DD94ZX	Extraction of Duodenum, Percutaneous Endoscopic Approach, Diagnostic	Procedure	ICD-10-PCS
0DD98ZX	Extraction of Duodenum, Via Natural or Artificial Opening Endoscopic, Diagnostic	Procedure	ICD-10-PCS
0DDA3ZX	Extraction of Jejunum, Percutaneous Approach, Diagnostic	Procedure	ICD-10-PCS
0DDA4ZX	Extraction of Jejunum, Percutaneous Endoscopic Approach, Diagnostic	Procedure	ICD-10-PCS
0DDA8ZX	Extraction of Jejunum, Via Natural or Artificial Opening Endoscopic, Diagnostic	Procedure	ICD-10-PCS
0DDB3ZX	Extraction of Ileum, Percutaneous Approach, Diagnostic	Procedure	ICD-10-PCS
0DDB4ZX	Extraction of Ileum, Percutaneous Endoscopic Approach, Diagnostic	Procedure	ICD-10-PCS
0DDB8ZX	Extraction of Ileum, Via Natural or Artificial Opening Endoscopic, Diagnostic	Procedure	ICD-10-PCS
0DDC3ZX	Extraction of Ileocecal Valve, Percutaneous Approach, Diagnostic	Procedure	ICD-10-PCS
0DDC4ZX	Extraction of Ileocecal Valve, Percutaneous Endoscopic Approach, Diagnostic	Procedure	ICD-10-PCS
0DDC8ZX	Extraction of Ileocecal Valve, Via Natural or Artificial Opening Endoscopic, Diagnostic	Procedure	ICD-10-PCS
0DDE3ZX	Extraction of Large Intestine, Percutaneous Approach, Diagnostic	Procedure	ICD-10-PCS
0DDE4ZX	Extraction of Large Intestine, Percutaneous Endoscopic Approach, Diagnostic	Procedure	ICD-10-PCS
0DDE8ZX	Extraction of Large Intestine, Via Natural or Artificial Opening Endoscopic, Diagnostic	Procedure	ICD-10-PCS
0DDF3ZX	Extraction of Right Large Intestine, Percutaneous Approach, Diagnostic	Procedure	ICD-10-PCS
0DDF4ZX	Extraction of Right Large Intestine, Percutaneous Endoscopic Approach, Diagnostic	Procedure	ICD-10-PCS
0DDF8ZX	Extraction of Right Large Intestine, Via Natural or Artificial Opening Endoscopic, Diagnostic	Procedure	ICD-10-PCS
0DDG3ZX	Extraction of Left Large Intestine, Percutaneous Approach, Diagnostic	Procedure	ICD-10-PCS
0DDG4ZX	Extraction of Left Large Intestine, Percutaneous Endoscopic Approach, Diagnostic	Procedure	ICD-10-PCS
0DDG8ZX	Extraction of Left Large Intestine, Via Natural or Artificial Opening Endoscopic, Diagnostic	Procedure	ICD-10-PCS
0DDH3ZX	Extraction of Cecum, Percutaneous Approach, Diagnostic	Procedure	ICD-10-PCS
0DDH4ZX	Extraction of Cecum, Percutaneous Endoscopic Approach, Diagnostic	Procedure	ICD-10-PCS
0DDH8ZX	Extraction of Cecum, Via Natural or Artificial Opening Endoscopic, Diagnostic	Procedure	ICD-10-PCS
0DDK3ZX	Extraction of Ascending Colon, Percutaneous Approach, Diagnostic	Procedure	ICD-10-PCS
0DDK4ZX	Extraction of Ascending Colon, Percutaneous Endoscopic Approach, Diagnostic	Procedure	ICD-10-PCS
0DDK8ZX	Extraction of Ascending Colon, Via Natural or Artificial Opening Endoscopic, Diagnostic	Procedure	ICD-10-PCS
0DDL3ZX	Extraction of Transverse Colon, Percutaneous Approach, Diagnostic	Procedure	ICD-10-PCS
0DDL4ZX	Extraction of Transverse Colon, Percutaneous Endoscopic Approach, Diagnostic	Procedure	ICD-10-PCS
0DDL8ZX	Extraction of Transverse Colon, Via Natural or Artificial Opening Endoscopic, Diagnostic	Procedure	ICD-10-PCS
0DDM3ZX	Extraction of Descending Colon, Percutaneous Approach, Diagnostic	Procedure	ICD-10-PCS

Appendix B. List of Current Procedural Terminology, Fourth Edition (CPT-4), Healthcare Common Procedure Coding System, Level II (HCPCS), International Classification of Diseases, Ninth Revision, Clinical Modification (ICD-9-CM), and International Classification of Diseases, Tenth Revision, Procedural Coding System (ICD-10-PCS) Codes Used to Define Biopsy in this Request

Code	Description	Code Category	Code Type
ODDM4ZX	Extraction of Descending Colon, Percutaneous Endoscopic Approach, Diagnostic	Procedure	ICD-10-PCS
ODDM8ZX	Extraction of Descending Colon, Via Natural or Artificial Opening Endoscopic, Diagnostic	Procedure	ICD-10-PCS
ODDN3ZX	Extraction of Sigmoid Colon, Percutaneous Approach, Diagnostic	Procedure	ICD-10-PCS
ODDN4ZX	Extraction of Sigmoid Colon, Percutaneous Endoscopic Approach, Diagnostic	Procedure	ICD-10-PCS
ODDN8ZX	Extraction of Sigmoid Colon, Via Natural or Artificial Opening Endoscopic, Diagnostic	Procedure	ICD-10-PCS
ODDP3ZX	Extraction of Rectum, Percutaneous Approach, Diagnostic	Procedure	ICD-10-PCS
ODDP4ZX	Extraction of Rectum, Percutaneous Endoscopic Approach, Diagnostic	Procedure	ICD-10-PCS
ODDP8ZX	Extraction of Rectum, Via Natural or Artificial Opening Endoscopic, Diagnostic	Procedure	ICD-10-PCS
ODDQ3ZX	Extraction of Anus, Percutaneous Approach, Diagnostic	Procedure	ICD-10-PCS
ODDQ4ZX	Extraction of Anus, Percutaneous Endoscopic Approach, Diagnostic	Procedure	ICD-10-PCS
ODDQ8ZX	Extraction of Anus, Via Natural or Artificial Opening Endoscopic, Diagnostic	Procedure	ICD-10-PCS
ODDQXZX	Extraction of Anus, External Approach, Diagnostic	Procedure	ICD-10-PCS
44010	Duodenotomy, for exploration, biopsy(s), or foreign body removal	Procedure	CPT-4
44020	Enterotomy, small intestine, other than duodenum; for exploration, biopsy(s), or foreign body removal	Procedure	CPT-4
44025	Colotomy, for exploration, biopsy(s), or foreign body removal	Procedure	CPT-4
44100	Biopsy of intestine by capsule, tube, peroral (1 or more specimens)	Procedure	CPT-4
44361	Small intestinal endoscopy, enteroscopy beyond second portion of duodenum, not including ileum; with biopsy, single or multiple	Procedure	CPT-4
44365	Small intestinal endoscopy, enteroscopy beyond second portion of duodenum, not including ileum; with removal of tumor(s), polyp(s), or other lesion(s) by hot biopsy forceps or bipolar cautery	Procedure	CPT-4
44369	Small intestinal endoscopy, enteroscopy beyond second portion of duodenum, not including ileum; with ablation of tumor(s), polyp(s), or other lesion(s) not amenable to removal by hot biopsy forceps, bipolar cautery or snare technique	Procedure	CPT-4
44377	Small intestinal endoscopy, enteroscopy beyond second portion of duodenum, including ileum; with biopsy, single or multiple	Procedure	CPT-4
44382	Ileoscopy, through stoma; with biopsy, single or multiple	Procedure	CPT-4
44386	Endoscopic evaluation of small intestinal pouch (e.g., Kock pouch, ileal reservoir [S or J]); with biopsy, single or multiple	Procedure	CPT-4
44389	Colonoscopy through stoma; with biopsy, single or multiple	Procedure	CPT-4
44392	Colonoscopy through stoma; with removal of tumor(s), polyp(s), or other lesion(s) by hot biopsy forceps	Procedure	CPT-4
44393	Colonoscopy through stoma; with ablation of tumor(s), polyp(s), or other lesion(s) not amenable to removal by hot biopsy forceps, bipolar cautery or snare technique	Procedure	CPT-4
44407	Colonoscopy through stoma; with transendoscopic ultrasound guided intramural or transmural fine needle aspiration/biopsy(s), includes endoscopic ultrasound examination limited to the sigmoid, descending, transverse, or ascending colon and cecum and adjacent structures	Procedure	CPT-4
45100	Biopsy of anorectal wall, anal approach (e.g., congenital megacolon)	Procedure	CPT-4
45305	Proctosigmoidoscopy, rigid; with biopsy, single or multiple	Procedure	CPT-4
45308	Proctosigmoidoscopy, rigid; with removal of single tumor, polyp, or other lesion by hot biopsy forceps or bipolar cautery	Procedure	CPT-4
45315	Proctosigmoidoscopy, rigid; with removal of multiple tumors, polyps, or other lesions by hot biopsy forceps, bipolar cautery or snare technique	Procedure	CPT-4

Appendix B. List of Current Procedural Terminology, Fourth Edition (CPT-4), Healthcare Common Procedure Coding System, Level II (HCPCS), International Classification of Diseases, Ninth Revision, Clinical Modification (ICD-9-CM), and International Classification of Diseases, Tenth Revision, Procedural Coding System (ICD-10-PCS) Codes Used to Define Biopsy in this Request

Code	Description	Code Category	Code Type
45320	Proctosigmoidoscopy, rigid; with ablation of tumor(s), polyp(s), or other lesion(s) not amenable to removal by hot biopsy forceps, bipolar cautery or snare technique (e.g., laser)	Procedure	CPT-4
45331	Sigmoidoscopy, flexible; with biopsy, single or multiple	Procedure	CPT-4
45333	Sigmoidoscopy, flexible; with removal of tumor(s), polyp(s), or other lesion(s) by hot biopsy forceps	Procedure	CPT-4
45339	Sigmoidoscopy, flexible; with ablation of tumor(s), polyp(s), or other lesion(s) not amenable to removal by hot biopsy forceps, bipolar cautery or snare technique	Procedure	CPT-4
45342	Sigmoidoscopy, flexible; with transendoscopic ultrasound guided intramural or transmural fine needle aspiration/biopsy(s)	Procedure	CPT-4
45380	Colonoscopy, flexible; with biopsy, single or multiple	Procedure	CPT-4
45383	Colonoscopy, flexible, proximal to splenic flexure; with ablation of tumor(s), polyp(s), or other lesion(s) not amenable to removal by hot biopsy forceps, bipolar cautery or snare technique	Procedure	CPT-4
45384	Colonoscopy, flexible; with removal of tumor(s), polyp(s), or other lesion(s) by hot biopsy forceps	Procedure	CPT-4
45392	Colonoscopy, flexible; with transendoscopic ultrasound guided intramural or transmural fine needle aspiration/biopsy(s), includes endoscopic ultrasound examination limited to the rectum, sigmoid, descending, transverse, or ascending colon and cecum, and adjacent structures	Procedure	CPT-4
46606	Anoscopy; with biopsy, single or multiple	Procedure	CPT-4
46607	Anoscopy; with high-resolution magnification (HRA) (e.g., colposcope, operating microscope) and chemical agent enhancement, with biopsy, single or multiple	Procedure	CPT-4
46610	Anoscopy; with removal of single tumor, polyp, or other lesion by hot biopsy forceps or bipolar cautery	Procedure	CPT-4
46612	Anoscopy; with removal of multiple tumors, polyps, or other lesions by hot biopsy forceps, bipolar cautery or snare technique	Procedure	CPT-4
46615	Anoscopy; with ablation of tumor(s), polyp(s), or other lesion(s) not amenable to removal by hot biopsy forceps, bipolar cautery or snare technique	Procedure	CPT-4
88300	Level I - Surgical pathology, gross examination only	Procedure	CPT-4
88302	Level II - Surgical pathology, gross and microscopic examination Appendix, incidental Fallopian tube, sterilization Fingers/toes, amputation, traumatic Foreskin, newborn Hernia sac, any location Hydrocele sac Nerve Skin, plastic repair Sympathetic ganglion Testis, castration Vaginal mucosa, incidental Vas deferens, sterilization	Procedure	CPT-4

Appendix C. List of Current Procedural Terminology, Fourth Edition (CPT-4), Healthcare Common Procedure Coding System, Level II (HCPCS), International Classification of Diseases, Ninth Revision, Clinical Modification (ICD-9-CM), and International Classification of Diseases, Tenth Revision, Procedural Coding System (ICD-10-PCS) Codes Used to Define Biopsy Incidence Criteria in this Request

Code	Description	Code Category	Code Type
45.00	Incision of intestine, not otherwise specified	Procedure	ICD-9-CM
45.01	Incision of duodenum	Procedure	ICD-9-CM
45.02	Other incision of small intestine	Procedure	ICD-9-CM
45.03	Incision of large intestine	Procedure	ICD-9-CM
45.14	Closed [endoscopic] biopsy of small intestine	Procedure	ICD-9-CM
45.15	Open biopsy of small intestine	Procedure	ICD-9-CM
45.16	Esophagogastroduodenoscopy (EGD) with closed biopsy	Procedure	ICD-9-CM
45.25	Closed [endoscopic] biopsy of large intestine	Procedure	ICD-9-CM
45.26	Open biopsy of large intestine	Procedure	ICD-9-CM
45.27	Intestinal biopsy, site unspecified	Procedure	ICD-9-CM
45.30	Endoscopic excision or destruction of lesion of duodenum	Procedure	ICD-9-CM
45.31	Other local excision of lesion of duodenum	Procedure	ICD-9-CM
45.32	Other destruction of lesion of duodenum	Procedure	ICD-9-CM
45.33	Local excision of lesion or tissue of small intestine, except duodenum	Procedure	ICD-9-CM
45.34	Other destruction of lesion of small intestine, except duodenum	Procedure	ICD-9-CM
45.41	Excision of lesion or tissue of large intestine	Procedure	ICD-9-CM
45.42	Endoscopic polypectomy of large intestine	Procedure	ICD-9-CM
45.43	Endoscopic destruction of other lesion or tissue of large intestine	Procedure	ICD-9-CM
45.49	Other destruction of lesion of large intestine	Procedure	ICD-9-CM
45.79	Other and unspecified partial excision of large intestine	Procedure	ICD-9-CM
48.24	Closed (endoscopic) biopsy of rectum	Procedure	ICD-9-CM
48.25	Open biopsy of rectum	Procedure	ICD-9-CM
48.26	Biopsy of perirectal tissue	Procedure	ICD-9-CM
48.35	Local excision of rectal lesion or tissue	Procedure	ICD-9-CM
48.36	[Endoscopic] polypectomy of rectum	Procedure	ICD-9-CM
48.82	Excision of perirectal tissue	Procedure	ICD-9-CM
49.02	Other incision of perianal tissue	Procedure	ICD-9-CM
49.04	Other excision of perianal tissue	Procedure	ICD-9-CM
49.22	Biopsy of perianal tissue	Procedure	ICD-9-CM
49.23	Biopsy of anus	Procedure	ICD-9-CM
49.31	Endoscopic excision or destruction of lesion or tissue of anus	Procedure	ICD-9-CM
49.39	Other local excision or destruction of lesion or tissue of anus	Procedure	ICD-9-CM
50.12	Open biopsy of liver	Procedure	ICD-9-CM
0D5E4ZZ	Destruction of Large Intestine, Percutaneous Endoscopic Approach	Procedure	ICD-10-PCS
0D980ZX	Drainage of Small Intestine, Open Approach, Diagnostic	Procedure	ICD-10-PCS
0D983ZX	Drainage of Small Intestine, Percutaneous Approach, Diagnostic	Procedure	ICD-10-PCS
0D984ZX	Drainage of Small Intestine, Percutaneous Endoscopic Approach, Diagnostic	Procedure	ICD-10-PCS
0D987ZX	Drainage of Small Intestine, Via Natural or Artificial Opening, Diagnostic	Procedure	ICD-10-PCS
0D988ZX	Drainage of Small Intestine, Via Natural or Artificial Opening Endoscopic, Diagnostic	Procedure	ICD-10-PCS
0D990ZX	Drainage of Duodenum, Open Approach, Diagnostic	Procedure	ICD-10-PCS
0D993ZX	Drainage of Duodenum, Percutaneous Approach, Diagnostic	Procedure	ICD-10-PCS
0D994ZX	Drainage of Duodenum, Percutaneous Endoscopic Approach, Diagnostic	Procedure	ICD-10-PCS
0D997ZX	Drainage of Duodenum, Via Natural or Artificial Opening, Diagnostic	Procedure	ICD-10-PCS
0D998ZX	Drainage of Duodenum, Via Natural or Artificial Opening Endoscopic, Diagnostic	Procedure	ICD-10-PCS
0D9A0ZX	Drainage of Jejunum, Open Approach, Diagnostic	Procedure	ICD-10-PCS

Appendix C. List of Current Procedural Terminology, Fourth Edition (CPT-4), Healthcare Common Procedure Coding System, Level II (HCPCS), International Classification of Diseases, Ninth Revision, Clinical Modification (ICD-9-CM), and International Classification of Diseases, Tenth Revision, Procedural Coding System (ICD-10-PCS) Codes Used to Define Biopsy Incidence Criteria in this Request

Code	Description	Code Category	Code Type
0D9A3ZX	Drainage of Jejunum, Percutaneous Approach, Diagnostic	Procedure	ICD-10-PCS
0D9A4ZX	Drainage of Jejunum, Percutaneous Endoscopic Approach, Diagnostic	Procedure	ICD-10-PCS
0D9A7ZX	Drainage of Jejunum, Via Natural or Artificial Opening, Diagnostic	Procedure	ICD-10-PCS
0D9A8ZX	Drainage of Jejunum, Via Natural or Artificial Opening Endoscopic, Diagnostic	Procedure	ICD-10-PCS
0D9B0ZX	Drainage of Ileum, Open Approach, Diagnostic	Procedure	ICD-10-PCS
0D9B3ZX	Drainage of Ileum, Percutaneous Approach, Diagnostic	Procedure	ICD-10-PCS
0D9B4ZX	Drainage of Ileum, Percutaneous Endoscopic Approach, Diagnostic	Procedure	ICD-10-PCS
0D9B7ZX	Drainage of Ileum, Via Natural or Artificial Opening, Diagnostic	Procedure	ICD-10-PCS
0D9B8ZX	Drainage of Ileum, Via Natural or Artificial Opening Endoscopic, Diagnostic	Procedure	ICD-10-PCS
0D9C0ZX	Drainage of Ileocecal Valve, Open Approach, Diagnostic	Procedure	ICD-10-PCS
0D9C3ZX	Drainage of Ileocecal Valve, Percutaneous Approach, Diagnostic	Procedure	ICD-10-PCS
0D9C4ZX	Drainage of Ileocecal Valve, Percutaneous Endoscopic Approach, Diagnostic	Procedure	ICD-10-PCS
0D9C7ZX	Drainage of Ileocecal Valve, Via Natural or Artificial Opening, Diagnostic	Procedure	ICD-10-PCS
0D9C8ZX	Drainage of Ileocecal Valve, Via Natural or Artificial Opening Endoscopic, Diagnostic	Procedure	ICD-10-PCS
0D9E0ZX	Drainage of Large Intestine, Open Approach, Diagnostic	Procedure	ICD-10-PCS
0D9E3ZX	Drainage of Large Intestine, Percutaneous Approach, Diagnostic	Procedure	ICD-10-PCS
0D9E4ZX	Drainage of Large Intestine, Percutaneous Endoscopic Approach, Diagnostic	Procedure	ICD-10-PCS
0D9E7ZX	Drainage of Large Intestine, Via Natural or Artificial Opening, Diagnostic	Procedure	ICD-10-PCS
0D9E8ZX	Drainage of Large Intestine, Via Natural or Artificial Opening Endoscopic, Diagnostic	Procedure	ICD-10-PCS
0D9F0ZX	Drainage of Right Large Intestine, Open Approach, Diagnostic	Procedure	ICD-10-PCS
0D9F3ZX	Drainage of Right Large Intestine, Percutaneous Approach, Diagnostic	Procedure	ICD-10-PCS
0D9F4ZX	Drainage of Right Large Intestine, Percutaneous Endoscopic Approach, Diagnostic	Procedure	ICD-10-PCS
0D9F7ZX	Drainage of Right Large Intestine, Via Natural or Artificial Opening, Diagnostic	Procedure	ICD-10-PCS
0D9F8ZX	Drainage of Right Large Intestine, Via Natural or Artificial Opening Endoscopic, Diagnostic	Procedure	ICD-10-PCS
0D9G0ZX	Drainage of Left Large Intestine, Open Approach, Diagnostic	Procedure	ICD-10-PCS
0D9G3ZX	Drainage of Left Large Intestine, Percutaneous Approach, Diagnostic	Procedure	ICD-10-PCS
0D9G4ZX	Drainage of Left Large Intestine, Percutaneous Endoscopic Approach, Diagnostic	Procedure	ICD-10-PCS
0D9G7ZX	Drainage of Left Large Intestine, Via Natural or Artificial Opening, Diagnostic	Procedure	ICD-10-PCS
0D9G8ZX	Drainage of Left Large Intestine, Via Natural or Artificial Opening Endoscopic, Diagnostic	Procedure	ICD-10-PCS
0D9H0ZX	Drainage of Cecum, Open Approach, Diagnostic	Procedure	ICD-10-PCS
0D9H3ZX	Drainage of Cecum, Percutaneous Approach, Diagnostic	Procedure	ICD-10-PCS
0D9H4ZX	Drainage of Cecum, Percutaneous Endoscopic Approach, Diagnostic	Procedure	ICD-10-PCS
0D9H7ZX	Drainage of Cecum, Via Natural or Artificial Opening, Diagnostic	Procedure	ICD-10-PCS
0D9H8ZX	Drainage of Cecum, Via Natural or Artificial Opening Endoscopic, Diagnostic	Procedure	ICD-10-PCS
0D9J0ZX	Drainage of Appendix, Open Approach, Diagnostic	Procedure	ICD-10-PCS
0D9K0ZX	Drainage of Ascending Colon, Open Approach, Diagnostic	Procedure	ICD-10-PCS
0D9K3ZX	Drainage of Ascending Colon, Percutaneous Approach, Diagnostic	Procedure	ICD-10-PCS
0D9K4ZX	Drainage of Ascending Colon, Percutaneous Endoscopic Approach, Diagnostic	Procedure	ICD-10-PCS
0D9K7ZX	Drainage of Ascending Colon, Via Natural or Artificial Opening, Diagnostic	Procedure	ICD-10-PCS
0D9K8ZX	Drainage of Ascending Colon, Via Natural or Artificial Opening Endoscopic, Diagnostic	Procedure	ICD-10-PCS
0D9L0ZX	Drainage of Transverse Colon, Open Approach, Diagnostic	Procedure	ICD-10-PCS
0D9L3ZX	Drainage of Transverse Colon, Percutaneous Approach, Diagnostic	Procedure	ICD-10-PCS
0D9L4ZX	Drainage of Transverse Colon, Percutaneous Endoscopic Approach, Diagnostic	Procedure	ICD-10-PCS
0D9L7ZX	Drainage of Transverse Colon, Via Natural or Artificial Opening, Diagnostic	Procedure	ICD-10-PCS

Appendix C. List of Current Procedural Terminology, Fourth Edition (CPT-4), Healthcare Common Procedure Coding System, Level II (HCPCS), International Classification of Diseases, Ninth Revision, Clinical Modification (ICD-9-CM), and International Classification of Diseases, Tenth Revision, Procedural Coding System (ICD-10-PCS) Codes Used to Define Biopsy Incidence Criteria in this Request

Code	Description	Code Category	Code Type
0D9L8ZX	Drainage of Transverse Colon, Via Natural or Artificial Opening Endoscopic, Diagnostic	Procedure	ICD-10-PCS
0D9M0ZX	Drainage of Descending Colon, Open Approach, Diagnostic	Procedure	ICD-10-PCS
0D9M3ZX	Drainage of Descending Colon, Percutaneous Approach, Diagnostic	Procedure	ICD-10-PCS
0D9M4ZX	Drainage of Descending Colon, Percutaneous Endoscopic Approach, Diagnostic	Procedure	ICD-10-PCS
0D9M7ZX	Drainage of Descending Colon, Via Natural or Artificial Opening, Diagnostic	Procedure	ICD-10-PCS
0D9M8ZX	Drainage of Descending Colon, Via Natural or Artificial Opening Endoscopic, Diagnostic	Procedure	ICD-10-PCS
0D9N0ZX	Drainage of Sigmoid Colon, Open Approach, Diagnostic	Procedure	ICD-10-PCS
0D9N3ZX	Drainage of Sigmoid Colon, Percutaneous Approach, Diagnostic	Procedure	ICD-10-PCS
0D9N4ZX	Drainage of Sigmoid Colon, Percutaneous Endoscopic Approach, Diagnostic	Procedure	ICD-10-PCS
0D9N7ZX	Drainage of Sigmoid Colon, Via Natural or Artificial Opening, Diagnostic	Procedure	ICD-10-PCS
0D9N8ZX	Drainage of Sigmoid Colon, Via Natural or Artificial Opening Endoscopic, Diagnostic	Procedure	ICD-10-PCS
0D9P0ZX	Drainage of Rectum, Open Approach, Diagnostic	Procedure	ICD-10-PCS
0D9P3ZX	Drainage of Rectum, Percutaneous Approach, Diagnostic	Procedure	ICD-10-PCS
0D9P4ZX	Drainage of Rectum, Percutaneous Endoscopic Approach, Diagnostic	Procedure	ICD-10-PCS
0D9P7ZX	Drainage of Rectum, Via Natural or Artificial Opening, Diagnostic	Procedure	ICD-10-PCS
0D9P8ZX	Drainage of Rectum, Via Natural or Artificial Opening Endoscopic, Diagnostic	Procedure	ICD-10-PCS
0D9Q0ZX	Drainage of Anus, Open Approach, Diagnostic	Procedure	ICD-10-PCS
0D9Q3ZX	Drainage of Anus, Percutaneous Approach, Diagnostic	Procedure	ICD-10-PCS
0DB80ZX	Excision of Small Intestine, Open Approach, Diagnostic	Procedure	ICD-10-PCS
0DB83ZX	Excision of Small Intestine, Percutaneous Approach, Diagnostic	Procedure	ICD-10-PCS
0DB84ZX	Excision of Small Intestine, Percutaneous Endoscopic Approach, Diagnostic	Procedure	ICD-10-PCS
0DB87ZX	Excision of Small Intestine, Via Natural or Artificial Opening, Diagnostic	Procedure	ICD-10-PCS
0DB88ZX	Excision of Small Intestine, Via Natural or Artificial Opening Endoscopic, Diagnostic	Procedure	ICD-10-PCS
0DB93ZX	Excision of Duodenum, Percutaneous Approach, Diagnostic	Procedure	ICD-10-PCS
0DB94ZX	Excision of Duodenum, Percutaneous Endoscopic Approach, Diagnostic	Procedure	ICD-10-PCS
0DB97ZX	Excision of Duodenum, Via Natural or Artificial Opening, Diagnostic	Procedure	ICD-10-PCS
0DB98ZX	Excision of Duodenum, Via Natural or Artificial Opening Endoscopic, Diagnostic	Procedure	ICD-10-PCS
0DBA0ZX	Excision of Jejunum, Open Approach, Diagnostic	Procedure	ICD-10-PCS
0DBA3ZX	Excision of Jejunum, Percutaneous Approach, Diagnostic	Procedure	ICD-10-PCS
0DBA4ZX	Excision of Jejunum, Percutaneous Endoscopic Approach, Diagnostic	Procedure	ICD-10-PCS
0DBA7ZX	Excision of Jejunum, Via Natural or Artificial Opening, Diagnostic	Procedure	ICD-10-PCS
0DBA8ZX	Excision of Jejunum, Via Natural or Artificial Opening Endoscopic, Diagnostic	Procedure	ICD-10-PCS
0DBB0ZX	Excision of Ileum, Open Approach, Diagnostic	Procedure	ICD-10-PCS
0DBB3ZX	Excision of Ileum, Percutaneous Approach, Diagnostic	Procedure	ICD-10-PCS
0DBB4ZX	Excision of Ileum, Percutaneous Endoscopic Approach, Diagnostic	Procedure	ICD-10-PCS
0DBB7ZX	Excision of Ileum, Via Natural or Artificial Opening, Diagnostic	Procedure	ICD-10-PCS
0DBB8ZX	Excision of Ileum, Via Natural or Artificial Opening Endoscopic, Diagnostic	Procedure	ICD-10-PCS
0DBC0ZX	Excision of Ileocecal Valve, Open Approach, Diagnostic	Procedure	ICD-10-PCS
0DBC3ZX	Excision of Ileocecal Valve, Percutaneous Approach, Diagnostic	Procedure	ICD-10-PCS
0DBC4ZX	Excision of Ileocecal Valve, Percutaneous Endoscopic Approach, Diagnostic	Procedure	ICD-10-PCS
0DBC7ZX	Excision of Ileocecal Valve, Via Natural or Artificial Opening, Diagnostic	Procedure	ICD-10-PCS
0DBC8ZX	Excision of Ileocecal Valve, Via Natural or Artificial Opening Endoscopic, Diagnostic	Procedure	ICD-10-PCS
0DBE0ZX	Excision of Large Intestine, Open Approach, Diagnostic	Procedure	ICD-10-PCS
0DBE3ZX	Excision of Large Intestine, Percutaneous Approach, Diagnostic	Procedure	ICD-10-PCS
0DBE4ZX	Excision of Large Intestine, Percutaneous Endoscopic Approach, Diagnostic	Procedure	ICD-10-PCS

Appendix C. List of Current Procedural Terminology, Fourth Edition (CPT-4), Healthcare Common Procedure Coding System, Level II (HCPCS), International Classification of Diseases, Ninth Revision, Clinical Modification (ICD-9-CM), and International Classification of Diseases, Tenth Revision, Procedural Coding System (ICD-10-PCS) Codes Used to Define Biopsy Incidence Criteria in this Request

Code	Description	Code Category	Code Type
ODBE7ZX	Excision of Large Intestine, Via Natural or Artificial Opening, Diagnostic	Procedure	ICD-10-PCS
ODBE8ZX	Excision of Large Intestine, Via Natural or Artificial Opening Endoscopic, Diagnostic	Procedure	ICD-10-PCS
ODBF0ZX	Excision of Right Large Intestine, Open Approach, Diagnostic	Procedure	ICD-10-PCS
ODBF3ZX	Excision of Right Large Intestine, Percutaneous Approach, Diagnostic	Procedure	ICD-10-PCS
ODBF4ZX	Excision of Right Large Intestine, Percutaneous Endoscopic Approach, Diagnostic	Procedure	ICD-10-PCS
ODBF7ZX	Excision of Right Large Intestine, Via Natural or Artificial Opening, Diagnostic	Procedure	ICD-10-PCS
ODBF8ZX	Excision of Right Large Intestine, Via Natural or Artificial Opening Endoscopic, Diagnostic	Procedure	ICD-10-PCS
ODBG0ZX	Excision of Left Large Intestine, Open Approach, Diagnostic	Procedure	ICD-10-PCS
ODBG3ZX	Excision of Left Large Intestine, Percutaneous Approach, Diagnostic	Procedure	ICD-10-PCS
ODBG4ZX	Excision of Left Large Intestine, Percutaneous Endoscopic Approach, Diagnostic	Procedure	ICD-10-PCS
ODBG7ZX	Excision of Left Large Intestine, Via Natural or Artificial Opening, Diagnostic	Procedure	ICD-10-PCS
ODBG8ZX	Excision of Left Large Intestine, Via Natural or Artificial Opening Endoscopic, Diagnostic	Procedure	ICD-10-PCS
ODBH0ZX	Excision of Cecum, Open Approach, Diagnostic	Procedure	ICD-10-PCS
ODBH3ZX	Excision of Cecum, Percutaneous Approach, Diagnostic	Procedure	ICD-10-PCS
ODBH4ZX	Excision of Cecum, Percutaneous Endoscopic Approach, Diagnostic	Procedure	ICD-10-PCS
ODBH7ZX	Excision of Cecum, Via Natural or Artificial Opening, Diagnostic	Procedure	ICD-10-PCS
ODBH8ZX	Excision of Cecum, Via Natural or Artificial Opening Endoscopic, Diagnostic	Procedure	ICD-10-PCS
ODBK0ZX	Excision of Ascending Colon, Open Approach, Diagnostic	Procedure	ICD-10-PCS
ODBK3ZX	Excision of Ascending Colon, Percutaneous Approach, Diagnostic	Procedure	ICD-10-PCS
ODBK4ZX	Excision of Ascending Colon, Percutaneous Endoscopic Approach, Diagnostic	Procedure	ICD-10-PCS
ODBK7ZX	Excision of Ascending Colon, Via Natural or Artificial Opening, Diagnostic	Procedure	ICD-10-PCS
ODBK8ZX	Excision of Ascending Colon, Via Natural or Artificial Opening Endoscopic, Diagnostic	Procedure	ICD-10-PCS
ODBL0ZX	Excision of Transverse Colon, Open Approach, Diagnostic	Procedure	ICD-10-PCS
ODBL3ZX	Excision of Transverse Colon, Percutaneous Approach, Diagnostic	Procedure	ICD-10-PCS
ODBL4ZX	Excision of Transverse Colon, Percutaneous Endoscopic Approach, Diagnostic	Procedure	ICD-10-PCS
ODBL7ZX	Excision of Transverse Colon, Via Natural or Artificial Opening, Diagnostic	Procedure	ICD-10-PCS
ODBL8ZX	Excision of Transverse Colon, Via Natural or Artificial Opening Endoscopic, Diagnostic	Procedure	ICD-10-PCS
ODBM0ZX	Excision of Descending Colon, Open Approach, Diagnostic	Procedure	ICD-10-PCS
ODBM3ZX	Excision of Descending Colon, Percutaneous Approach, Diagnostic	Procedure	ICD-10-PCS
ODBM4ZX	Excision of Descending Colon, Percutaneous Endoscopic Approach, Diagnostic	Procedure	ICD-10-PCS
ODBM7ZX	Excision of Descending Colon, Via Natural or Artificial Opening, Diagnostic	Procedure	ICD-10-PCS
ODBM8ZX	Excision of Descending Colon, Via Natural or Artificial Opening Endoscopic, Diagnostic	Procedure	ICD-10-PCS
ODBN0ZX	Excision of Sigmoid Colon, Open Approach, Diagnostic	Procedure	ICD-10-PCS
ODBN3ZX	Excision of Sigmoid Colon, Percutaneous Approach, Diagnostic	Procedure	ICD-10-PCS
ODBN4ZX	Excision of Sigmoid Colon, Percutaneous Endoscopic Approach, Diagnostic	Procedure	ICD-10-PCS
ODBN7ZX	Excision of Sigmoid Colon, Via Natural or Artificial Opening, Diagnostic	Procedure	ICD-10-PCS
ODBN8ZX	Excision of Sigmoid Colon, Via Natural or Artificial Opening Endoscopic, Diagnostic	Procedure	ICD-10-PCS
ODBP0ZX	Excision of Rectum, Open Approach, Diagnostic	Procedure	ICD-10-PCS
ODBP3ZX	Excision of Rectum, Percutaneous Approach, Diagnostic	Procedure	ICD-10-PCS
ODBP4ZX	Excision of Rectum, Percutaneous Endoscopic Approach, Diagnostic	Procedure	ICD-10-PCS
ODBP7ZX	Excision of Rectum, Via Natural or Artificial Opening, Diagnostic	Procedure	ICD-10-PCS
ODBP8ZX	Excision of Rectum, Via Natural or Artificial Opening Endoscopic, Diagnostic	Procedure	ICD-10-PCS
ODBQ0ZX	Excision of Anus, Open Approach, Diagnostic	Procedure	ICD-10-PCS
ODBQ3ZX	Excision of Anus, Percutaneous Approach, Diagnostic	Procedure	ICD-10-PCS
ODBQ4ZX	Excision of Anus, Percutaneous Endoscopic Approach, Diagnostic	Procedure	ICD-10-PCS

Appendix C. List of Current Procedural Terminology, Fourth Edition (CPT-4), Healthcare Common Procedure Coding System, Level II (HCPCS), International Classification of Diseases, Ninth Revision, Clinical Modification (ICD-9-CM), and International Classification of Diseases, Tenth Revision, Procedural Coding System (ICD-10-PCS) Codes Used to Define Biopsy Incidence Criteria in this Request

Code	Description	Code Category	Code Type
ODBQ7ZX	Excision of Anus, Via Natural or Artificial Opening, Diagnostic	Procedure	ICD-10-PCS
ODBQ8ZX	Excision of Anus, Via Natural or Artificial Opening Endoscopic, Diagnostic	Procedure	ICD-10-PCS
ODBQXZX	Excision of Anus, External Approach, Diagnostic	Procedure	ICD-10-PCS
ODBR0ZX	Excision of Anal Sphincter, Open Approach, Diagnostic	Procedure	ICD-10-PCS
ODBR3ZX	Excision of Anal Sphincter, Percutaneous Approach, Diagnostic	Procedure	ICD-10-PCS
ODBR4ZX	Excision of Anal Sphincter, Percutaneous Endoscopic Approach, Diagnostic	Procedure	ICD-10-PCS
ODD83ZX	Extraction of Small Intestine, Percutaneous Approach, Diagnostic	Procedure	ICD-10-PCS
ODD84ZX	Extraction of Small Intestine, Percutaneous Endoscopic Approach, Diagnostic	Procedure	ICD-10-PCS
ODD88ZX	Extraction of Small Intestine, Via Natural or Artificial Opening Endoscopic, Diagnostic	Procedure	ICD-10-PCS
ODD93ZX	Extraction of Duodenum, Percutaneous Approach, Diagnostic	Procedure	ICD-10-PCS
ODD94ZX	Extraction of Duodenum, Percutaneous Endoscopic Approach, Diagnostic	Procedure	ICD-10-PCS
ODD98ZX	Extraction of Duodenum, Via Natural or Artificial Opening Endoscopic, Diagnostic	Procedure	ICD-10-PCS
ODDA3ZX	Extraction of Jejunum, Percutaneous Approach, Diagnostic	Procedure	ICD-10-PCS
ODDA4ZX	Extraction of Jejunum, Percutaneous Endoscopic Approach, Diagnostic	Procedure	ICD-10-PCS
ODDA8ZX	Extraction of Jejunum, Via Natural or Artificial Opening Endoscopic, Diagnostic	Procedure	ICD-10-PCS
ODDB3ZX	Extraction of Ileum, Percutaneous Approach, Diagnostic	Procedure	ICD-10-PCS
ODDB4ZX	Extraction of Ileum, Percutaneous Endoscopic Approach, Diagnostic	Procedure	ICD-10-PCS
ODDB8ZX	Extraction of Ileum, Via Natural or Artificial Opening Endoscopic, Diagnostic	Procedure	ICD-10-PCS
ODDC3ZX	Extraction of Ileocecal Valve, Percutaneous Approach, Diagnostic	Procedure	ICD-10-PCS
ODDC4ZX	Extraction of Ileocecal Valve, Percutaneous Endoscopic Approach, Diagnostic	Procedure	ICD-10-PCS
ODDC8ZX	Extraction of Ileocecal Valve, Via Natural or Artificial Opening Endoscopic, Diagnostic	Procedure	ICD-10-PCS
ODDE3ZX	Extraction of Large Intestine, Percutaneous Approach, Diagnostic	Procedure	ICD-10-PCS
ODDE4ZX	Extraction of Large Intestine, Percutaneous Endoscopic Approach, Diagnostic	Procedure	ICD-10-PCS
ODDE8ZX	Extraction of Large Intestine, Via Natural or Artificial Opening Endoscopic, Diagnostic	Procedure	ICD-10-PCS
ODDF3ZX	Extraction of Right Large Intestine, Percutaneous Approach, Diagnostic	Procedure	ICD-10-PCS
ODDF4ZX	Extraction of Right Large Intestine, Percutaneous Endoscopic Approach, Diagnostic	Procedure	ICD-10-PCS
ODDF8ZX	Extraction of Right Large Intestine, Via Natural or Artificial Opening Endoscopic, Diagnostic	Procedure	ICD-10-PCS
ODDG3ZX	Extraction of Left Large Intestine, Percutaneous Approach, Diagnostic	Procedure	ICD-10-PCS
ODDG4ZX	Extraction of Left Large Intestine, Percutaneous Endoscopic Approach, Diagnostic	Procedure	ICD-10-PCS
ODDG8ZX	Extraction of Left Large Intestine, Via Natural or Artificial Opening Endoscopic, Diagnostic	Procedure	ICD-10-PCS
ODDH3ZX	Extraction of Cecum, Percutaneous Approach, Diagnostic	Procedure	ICD-10-PCS
ODDH4ZX	Extraction of Cecum, Percutaneous Endoscopic Approach, Diagnostic	Procedure	ICD-10-PCS
ODDH8ZX	Extraction of Cecum, Via Natural or Artificial Opening Endoscopic, Diagnostic	Procedure	ICD-10-PCS
ODDK3ZX	Extraction of Ascending Colon, Percutaneous Approach, Diagnostic	Procedure	ICD-10-PCS
ODDK4ZX	Extraction of Ascending Colon, Percutaneous Endoscopic Approach, Diagnostic	Procedure	ICD-10-PCS
ODDK8ZX	Extraction of Ascending Colon, Via Natural or Artificial Opening Endoscopic, Diagnostic	Procedure	ICD-10-PCS
ODDL3ZX	Extraction of Transverse Colon, Percutaneous Approach, Diagnostic	Procedure	ICD-10-PCS
ODDL4ZX	Extraction of Transverse Colon, Percutaneous Endoscopic Approach, Diagnostic	Procedure	ICD-10-PCS
ODDL8ZX	Extraction of Transverse Colon, Via Natural or Artificial Opening Endoscopic, Diagnostic	Procedure	ICD-10-PCS
ODDM3ZX	Extraction of Descending Colon, Percutaneous Approach, Diagnostic	Procedure	ICD-10-PCS
ODDM4ZX	Extraction of Descending Colon, Percutaneous Endoscopic Approach, Diagnostic	Procedure	ICD-10-PCS
ODDM8ZX	Extraction of Descending Colon, Via Natural or Artificial Opening Endoscopic, Diagnostic	Procedure	ICD-10-PCS
ODDN3ZX	Extraction of Sigmoid Colon, Percutaneous Approach, Diagnostic	Procedure	ICD-10-PCS
ODDN4ZX	Extraction of Sigmoid Colon, Percutaneous Endoscopic Approach, Diagnostic	Procedure	ICD-10-PCS

Appendix C. List of Current Procedural Terminology, Fourth Edition (CPT-4), Healthcare Common Procedure Coding System, Level II (HCPCS), International Classification of Diseases, Ninth Revision, Clinical Modification (ICD-9-CM), and International Classification of Diseases, Tenth Revision, Procedural Coding System (ICD-10-PCS) Codes Used to Define Biopsy Incidence Criteria in this Request

Code	Description	Code Category	Code Type
ODDN8ZX	Extraction of Sigmoid Colon, Via Natural or Artificial Opening Endoscopic, Diagnostic	Procedure	ICD-10-PCS
ODDP3ZX	Extraction of Rectum, Percutaneous Approach, Diagnostic	Procedure	ICD-10-PCS
ODDP4ZX	Extraction of Rectum, Percutaneous Endoscopic Approach, Diagnostic	Procedure	ICD-10-PCS
ODDP8ZX	Extraction of Rectum, Via Natural or Artificial Opening Endoscopic, Diagnostic	Procedure	ICD-10-PCS
ODDQ3ZX	Extraction of Anus, Percutaneous Approach, Diagnostic	Procedure	ICD-10-PCS
ODDQ4ZX	Extraction of Anus, Percutaneous Endoscopic Approach, Diagnostic	Procedure	ICD-10-PCS
ODDQ8ZX	Extraction of Anus, Via Natural or Artificial Opening Endoscopic, Diagnostic	Procedure	ICD-10-PCS
44010	Duodenotomy, for exploration, biopsy(s), or foreign body removal	Procedure	CPT-4
44020	Enterotomy, small intestine, other than duodenum; for exploration, biopsy(s), or foreign body removal	Procedure	CPT-4
44025	Colotomy, for exploration, biopsy(s), or foreign body removal	Procedure	CPT-4
44100	Biopsy of intestine by capsule, tube, peroral (1 or more specimens)	Procedure	CPT-4
44361	Small intestinal endoscopy, enteroscopy beyond second portion of duodenum, not including ileum; with biopsy, single or multiple	Procedure	CPT-4
44365	Small intestinal endoscopy, enteroscopy beyond second portion of duodenum, not including ileum; with removal of tumor(s), polyp(s), or other lesion(s) by hot biopsy forceps or bipolar cautery	Procedure	CPT-4
44369	Small intestinal endoscopy, enteroscopy beyond second portion of duodenum, not including ileum; with ablation of tumor(s), polyp(s), or other lesion(s) not amenable to removal by hot biopsy forceps, bipolar cautery or snare technique	Procedure	CPT-4
44377	Small intestinal endoscopy, enteroscopy beyond second portion of duodenum, including ileum; with biopsy, single or multiple	Procedure	CPT-4
44382	Ileoscopy, through stoma; with biopsy, single or multiple	Procedure	CPT-4
44386	Endoscopic evaluation of small intestinal pouch (e.g., Kock pouch, ileal reservoir [S or J]); with biopsy, single or multiple	Procedure	CPT-4
44389	Colonoscopy through stoma; with biopsy, single or multiple	Procedure	CPT-4
44392	Colonoscopy through stoma; with removal of tumor(s), polyp(s), or other lesion(s) by hot biopsy forceps	Procedure	CPT-4
44393	Colonoscopy through stoma; with ablation of tumor(s), polyp(s), or other lesion(s) not amenable to removal by hot biopsy forceps, bipolar cautery or snare technique	Procedure	CPT-4
44407	Colonoscopy through stoma; with transendoscopic ultrasound guided intramural or transmural fine needle aspiration/biopsy(s), includes endoscopic ultrasound examination limited to the sigmoid, descending, transverse, or ascending colon and cecum and adjacent structures	Procedure	CPT-4
45100	Biopsy of anorectal wall, anal approach (e.g., congenital megacolon)	Procedure	CPT-4
45305	Proctosigmoidoscopy, rigid; with biopsy, single or multiple	Procedure	CPT-4
45308	Proctosigmoidoscopy, rigid; with removal of single tumor, polyp, or other lesion by hot biopsy forceps or bipolar cautery	Procedure	CPT-4
45315	Proctosigmoidoscopy, rigid; with removal of multiple tumors, polyps, or other lesions by hot biopsy forceps, bipolar cautery or snare technique	Procedure	CPT-4
45320	Proctosigmoidoscopy, rigid; with ablation of tumor(s), polyp(s), or other lesion(s) not amenable to removal by hot biopsy forceps, bipolar cautery or snare technique (e.g., laser)	Procedure	CPT-4
45331	Sigmoidoscopy, flexible; with biopsy, single or multiple	Procedure	CPT-4

Appendix C. List of Current Procedural Terminology, Fourth Edition (CPT-4), Healthcare Common Procedure Coding System, Level II (HCPCS), International Classification of Diseases, Ninth Revision, Clinical Modification (ICD-9-CM), and International Classification of Diseases, Tenth Revision, Procedural Coding System (ICD-10-PCS) Codes Used to Define Biopsy Incidence Criteria in this Request

Code	Description	Code Category	Code Type
45333	Sigmoidoscopy, flexible; with removal of tumor(s), polyp(s), or other lesion(s) by hot biopsy forceps	Procedure	CPT-4
45339	Sigmoidoscopy, flexible; with ablation of tumor(s), polyp(s), or other lesion(s) not amenable to removal by hot biopsy forceps, bipolar cautery or snare technique	Procedure	CPT-4
45342	Sigmoidoscopy, flexible; with transendoscopic ultrasound guided intramural or transmural fine needle aspiration/biopsy(s)	Procedure	CPT-4
45380	Colonoscopy, flexible; with biopsy, single or multiple	Procedure	CPT-4
45383	Colonoscopy, flexible, proximal to splenic flexure; with ablation of tumor(s), polyp(s), or other lesion(s) not amenable to removal by hot biopsy forceps, bipolar cautery or snare technique	Procedure	CPT-4
45384	Colonoscopy, flexible; with removal of tumor(s), polyp(s), or other lesion(s) by hot biopsy forceps	Procedure	CPT-4
45392	Colonoscopy, flexible; with transendoscopic ultrasound guided intramural or transmural fine needle aspiration/biopsy(s), includes endoscopic ultrasound examination limited to the rectum, sigmoid, descending, transverse, or ascending colon and cecum, and adjacent structures	Procedure	CPT-4
46606	Anoscopy; with biopsy, single or multiple	Procedure	CPT-4
46607	Anoscopy; with high-resolution magnification (HRA) (e.g., colposcope, operating microscope) and chemical agent enhancement, with biopsy, single or multiple	Procedure	CPT-4
46610	Anoscopy; with removal of single tumor, polyp, or other lesion by hot biopsy forceps or bipolar cautery	Procedure	CPT-4
46612	Anoscopy; with removal of multiple tumors, polyps, or other lesions by hot biopsy forceps, bipolar cautery or snare technique	Procedure	CPT-4
46615	Anoscopy; with ablation of tumor(s), polyp(s), or other lesion(s) not amenable to removal by hot biopsy forceps, bipolar cautery or snare technique	Procedure	CPT-4
88300	Level I - Surgical pathology, gross examination only	Procedure	CPT-4
88302	Level II - Surgical pathology, gross and microscopic examination Appendix, incidental Fallopian tube, sterilization Fingers/toes, amputation, traumatic Foreskin, newborn Hernia sac, any location Hydrocele sac Nerve Skin, plastic repair Sympathetic ganglion Testis, castration Vaginal mucosa, incidental Vas deferens, sterilization	Procedure	CPT-4
0DDQXZX	Extraction of Anus, External Approach, Diagnostic	Procedure	ICD-10-PCS

Appendix D. Specifications of the Study Design and Parameters Used in this Request

Sentinel's Cohort Identification and Descriptive Analysis (CIDA) tool will be used to compare the frequency of diagnoses for a selection of health outcomes using ICD-9 versus ICD-10 codes

Coverage requirement: At least medical coverage

Enrollment gap: 45 Days

Enrollment Requirement: (See below)

Age groups: 0-106

Stratifications: (See below)

Exposure/Event

Scenario	Group	Event	Enrollment Requirement	Stratifications	Query Period Start	Query Period End	Monitoring File/Run #	Event Code Type	Incident Code Type	Cohort definition	Washout period	Care setting
1	BP_9_yr1	Biopsy Procedure	183	None	10/1/2013	9/30/2014	1	ICD-9-CM, HCPCS/CPT	ICD-9-CM, HCPCS/CPT	02	183	Any care setting
2	BP_9_yr2	Biopsy Procedure	183	None	10/1/2014	9/30/2015	2	ICD-9-CM, HCPCS/CPT	ICD-9-CM, HCPCS/CPT	02	183	Any care setting
3	BP_10_yr1	Biopsy Procedure	183	None	10/1/2015	9/30/2016	3	ICD-10-CM, HCPCS/CPT	ICD-10-CM, HCPCS/CPT	02	183	Any care setting
4	BP_10_yr2	Biopsy Procedure	183	None	10/1/2016	9/30/2017	4	ICD-10-CM, HCPCS/CPT	ICD-10-CM, HCPCS/CPT	02	183	Any care setting
5	BP_9_inc	Biopsy Procedure	183	Year*Month	10/1/2010	12/31/2022	5	ICD-9-CM, HCPCS/CPT	ICD-9-CM, ICD-10-CM, HCPCS/CPT	02	183	Any care setting
6	BP_10_inc	Biopsy Procedure	183	Year*Month	10/1/2010	12/31/2022	5	ICD-10-CM, HCPCS/CPT	ICD-9-CM, ICD-10-CM, HCPCS/CPT	02	183	Any care setting
7	BP_9_prev	Biopsy Procedure	0	Year*Month	10/1/2010	12/31/2022	5	ICD-9-CM, HCPCS/CPT	N/A	02	0	Any care setting
8	BP_10_prev	Biopsy Procedure	0	Year*Month	10/1/2010	12/31/2022	5	ICD-10-CM, HCPCS/CPT	N/A	02	0	Any care setting

ICD-9-CM and ICD-10-CM are provided by FDA. ICD-10-CM codes were mapped from ICD-9-CM codes and ICD-9-CM codes were mapped from ICD-10-CM. ☐

ICD-9, ICD-10, HCPCS, and CPT codes are provided by FDA.

NDC codes are checked against First Data Bank's FDB MedKnowledge®.