



Modular Program Report

The following report(s) provides findings from an FDA-initiated query using its Mini-Sentinel pilot. While Mini-Sentinel queries may be undertaken to assess potential medical product safety risks, they may also be initiated for various other reasons. Some examples include determining a rate or count of an identified health outcome of interest, examining medical product use, exploring the feasibility of future, more detailed analyses within Mini-Sentinel, and seeking to better understand the capabilities of the Mini-Sentinel pilot.

Data obtained through Mini-Sentinel are intended to complement other types of evidence such as preclinical studies, clinical trials, postmarket studies, and adverse event reports, all of which are used by FDA to inform regulatory decisions regarding medical product safety. The information contained in this report is provided as part of FDA's commitment to place knowledge acquired from the Mini-Sentinel pilot in the public domain as soon as possible. Any public health actions taken by FDA regarding products involved in Mini-Sentinel queries will continue to be communicated through existing channels.

FDA wants to emphasize that the fact that FDA has initiated a query involving a medical product and is reporting findings related to that query does not mean that FDA is suggesting health care practitioners should change their prescribing practices for the medical product or that patients taking the medical product should stop using it. Patients who have questions about the use of an identified medical product should contact their health care practitioners.

The following report contains a description of the request, request specifications, and results from the modular program run(s).

If you are using a web page screen reader and are unable to access this document, please contact the Mini-Sentinel Operations Center for assistance at info@mini-sentinel.org.

Overview

<u>Request Description</u>	<p>FDA has requested execution of Modular Program #5 (MP5), version 2.1, to investigate past and current nursing home facility procedure codes (all Healthcare Common Procedure Coding System (HCPCS) codes) in the Mini-Sentinel Distributed Database (MSDD). See Appendix A for a description of each code included in this request. This involved one run of MP5. The query was run against the MSDD from the time period of January 1, 2000 – December 31, 2012. The package was distributed to 18 Data Partners on July 11, 2013.</p> <p>Results provide counts of prevalent and incident nursing home facility care patients, total claims, eligible members, and member-days. The query period was January 1, 2000 to December 31, 2012.</p>
<u>Request ID</u>	msy4_mpr45_v1
<u>Specifications</u>	Program parameter inputs and scenarios
<u>Glossary</u>	List of terms found in this report and their definitions
<u>Table 1</u>	Table displaying the number of prevalent and incident nursing home facility code patients, new starts, total claims, eligible members, member-days, and number of patients per 100,000 eligible members by care setting and code grouping - January 1, 2000 - December 31, 2012.
<u>Figure 1</u>	Four figures displaying the information in the prior tab.
<u>Table 2</u>	Table displaying the number of prevalent and incident nursing home facility code patients, new starts, total claims, eligible members, member-days, and number of patients per 100,000 eligible members by care setting, code grouping, and age group - January 1, 2000 - December 31, 2012.
<u>Table 3</u>	Table displaying the number of prevalent and incident nursing home facility code patients, new starts, total claims, eligible members, member-days, and number of patients per 100,000 eligible members by care setting, code grouping, and sex - January 1, 2000 - December 31, 2012.
<u>Table 4</u>	Table displaying the number of prevalent and incident nursing home facility code patients, new starts, total claims, eligible members, member-days, and number of patients per 100,000 eligible members by care setting, code grouping, and year - January 1, 2000 - December 31, 2012.
<u>Figure 2</u>	Two figures displaying information on prevalent nursing home facility code patients, by year and code
<u>Appendix A</u>	Description of codes included in this request.
<u>Notes:</u>	Please contact the Mini-Sentinel Operations Center (MSOC_Requests@harvardpilgrim.org) for questions and to provide comments/suggestions for future enhancements to this document.

Modular Program Specifications MSY4_MPR45_v1						
Modular Program #5, version 2.1, was used to investigate prevalence and incidence of nursing home facility care procedure codes (all HCPCS). The query period was from January 1, 2000 to December 31, 2012, and the enrollment gap was set at 45 days. In total, 48 different scenarios were examined in this report with differing codes to define nursing home facility care and care settings of interest. See below for a description of each of these scenarios. Descriptions and definitions of procedure codes are found in Appendix A.						
Enrollment Gap		45 Days				
Age Groups		0-64, 65+				
Query Period		January 1, 2000 - December 31, 2012				
Drug/Exposure Criteria						
Scenario	Incident exposure	Care Setting	Incident w/ respect to (incidence criteria):	Incident Only Care Setting	Washout (days)	Incidence Type
14	Q5003	Any	Q5003	Any	90	Multiple
15	Q5004	Any	Q5004	Any	90	Multiple
16	All Current Codes (99304, 99305, 99306, 99307, 99308, 99309, 33910, 99315, 99316, 99318, 99379, 99380, 94004, Q5003, Q5004)	Any	All Current Codes (99304, 99305, 99306, 99307, 99308, 99309, 33910, 99315, 99316, 99318, 99379, 99380, 94004, Q5003, Q5004)	Any	90	Multiple
17	99301	Any	99301	Any	90	Multiple
18	99302	Any	99302	Any	90	Multiple
19	99303	Any	99303	Any	90	Multiple
20	99311	Any	99311	Any	90	Multiple
21	99312	Any	99312	Any	90	Multiple
22	99313	Any	99313	Any	90	Multiple
23	G0066	Any	G0066	Any	90	Multiple
24	All Past Codes (99301, 99302, 99303, 99311, 99312, 99313, G0066)	Any	All Past Codes (99301, 99302, 99303, 99311, 99312, 99313, G0066)	Any	90	Multiple
25	99304	Institutional Stay Only	99304	Institutional Stay Only	90	Multiple
26	99305	Institutional Stay Only	99305	Institutional Stay Only	90	Multiple

Modular Program Specifications MSY4_MPR45_v1							
Modular Program #5, version 2.1, was used to investigate prevalence and incidence of nursing home facility care procedure codes (all HCPCS). The query period was from January 1, 2000 to December 31, 2012, and the enrollment gap was set at 45 days. In total, 48 different scenarios were examined in this report with differing codes to define nursing home facility care and care settings of interest. See below for a description of each of these scenarios. Descriptions and definitions of procedure codes are found in Appendix A.							
Enrollment Gap		45 Days					
Age Groups		0-64, 65+					
Query Period		January 1, 2000 - December 31, 2012					
Drug/Exposure Criteria							
Scenario	Incident exposure	Care Setting	Incident w/ respect to (incidence criteria):	Incident Only Care Setting	Washout (days)	Incidence Type	
27	99306	Institutional Stay Only	99306	Institutional Stay Only	90	Multiple	
28	99307	Institutional Stay Only	99307	Institutional Stay Only	90	Multiple	
29	99308	Institutional Stay Only	99308	Institutional Stay Only	90	Multiple	
30	99309	Institutional Stay Only	99309	Institutional Stay Only	90	Multiple	
31	99310	Institutional Stay Only	99310	Institutional Stay Only	90	Multiple	
32	99315	Institutional Stay Only	99315	Institutional Stay Only	90	Multiple	
33	99316	Institutional Stay Only	99316	Institutional Stay Only	90	Multiple	
34	99318	Institutional Stay Only	99318	Institutional Stay Only	90	Multiple	
35	99379	Institutional Stay Only	99379	Institutional Stay Only	90	Multiple	
36	99380	Institutional Stay Only	99380	Institutional Stay Only	90	Multiple	
37	94004	Institutional Stay Only	94004	Institutional Stay Only	90	Multiple	
38	Q5003	Institutional Stay Only	Q5003	Institutional Stay Only	90	Multiple	
39	Q5004	Institutional Stay Only	Q5004	Institutional Stay Only	90	Multiple	

Modular Program Specifications MSY4_MPR45_v1						
Modular Program #5, version 2.1, was used to investigate prevalence and incidence of nursing home facility care procedure codes (all HCPCS). The query period was from January 1, 2000 to December 31, 2012, and the enrollment gap was set at 45 days. In total, 48 different scenarios were examined in this report with differing codes to define nursing home facility care and care settings of interest. See below for a description of each of these scenarios. Descriptions and definitions of procedure codes are found in Appendix A.						
Enrollment Gap		45 Days				
Age Groups		0-64, 65+				
Query Period		January 1, 2000 - December 31, 2012				
Drug/Exposure Criteria						
Scenario	Incident exposure	Care Setting	Incident w/ respect to (incidence criteria):	Incident Only Care Setting	Washout (days)	Incidence Type
40	All Current Codes (99304, 99305, 99306, 99307, 99308, 99309, 33910, 99315, 99316, 99318, 99379, 99380, 94004, Q5003, Q5004)	Institutional Stay Only	All Current Codes (99304, 99305, 99306, 99307, 99308, 99309, 33910, 99315, 99316, 99318, 99379, 99380, 94004, Q5003, Q5004)	Institutional Stay Only	90	Multiple
41	99301	Institutional Stay Only	99301	Institutional Stay Only	90	Multiple
42	99302	Institutional Stay Only	99302	Institutional Stay Only	90	Multiple
43	99303	Institutional Stay Only	99303	Institutional Stay Only	90	Multiple
44	99311	Institutional Stay Only	99311	Institutional Stay Only	90	Multiple
45	99312	Institutional Stay Only	99312	Institutional Stay Only	90	Multiple
46	99313	Institutional Stay Only	99313	Institutional Stay Only	90	Multiple
47	G0066	Institutional Stay Only	G0066	Institutional Stay Only	90	Multiple
48	All Past Codes (99301, 99302, 99303, 99311, 99312, 99313, G0066)	Institutional Stay Only	All Past Codes (99301, 99302, 99303, 99311, 99312, 99313, G0066)	Institutional Stay Only	90	Multiple

Glossary of Terms in Modular Program 5*

Eligible Members (incidence-based cohort) - Number of members eligible for incident diagnosis (defined by the washout period) with medical coverage during the query period.

Eligible Members (prevalence-based cohort) - Number of members with at least one day of medical coverage during the query period.

Enrollment Gap - Number of days allowed between two consecutive enrollment periods without breaking a “continuously enrolled” sequence.

Incidence Type (drug/exposure) - *Minimum incidence type* will consider the first dispensing in the query period as a new start as long as it is the first dispensing in the user's entire available history. *Multiple incidence type* will use the washout period to establish incidence, however Multiple will consider all qualifying incident dispensings as new starts.

Member-Days (incidence-based cohort) - Sum of all days of enrollment with medical coverage in the query period preceded by a washout period.

Member-Days (prevalence-based cohort) - Sum of all days members are enrolled with medical coverage during the query period.

New Starts- Number of incident diagnoses during the query period. Patient must have no prior diagnoses in the washout period. For a minimum incidence type, an individual may have no more than one new start. For a multiple washout type, an individual may have more than one new start.

New Patients - Number of members with incident diagnosis during the query period. Member must have no evidence of diagnosis of interest (defined by incidence criteria) in the prior washout period. A patient may only be counted once in a query period.

Query Period - Period in which the modular program looks for diagnoses of interest.

Washout Period - Number of days a patient is required to have no evidence of prior diagnosis and continuous medical coverage.

*all terms may not be used in this report

Table 1. Summary of Nursing Home Facility Care Codes between January 1, 2000 and December 31, 2012, by Setting and Code Group

Group	Prevalent					Incident					
	Patients	Number of Claims	Eligible Members	Member-Days	Patients per 100K Eligible Members	New Patients	New Claims	Number of Total Claims	Eligible Members	Member-Days	New Patients per 100K Eligible Members
Any Care Setting											
99304	157,924	195,040	138,912,968	138,965,188,837	113.69	147,584	161,231	181,904	130,105,353	125,329,316,296	113.43
99305	460,118	629,375	138,912,968	138,965,188,837	331.23	430,048	498,567	587,759	130,103,386	125,299,409,118	330.54
99306	714,074	1,072,003	138,912,968	138,965,188,837	514.04	668,015	813,268	1,000,154	130,100,736	125,270,607,993	513.46
99307	489,602	1,590,652	138,912,968	138,965,188,837	352.45	441,681	635,155	1,369,766	130,097,619	125,266,154,033	339.50
99308	859,565	3,934,269	138,912,968	138,965,188,837	618.78	778,671	1,145,517	3,362,345	130,085,202	125,187,886,878	598.59
99309	756,045	3,003,111	138,912,968	138,965,188,837	544.26	690,742	986,969	2,642,416	130,091,361	125,218,697,159	530.97
99310	261,152	570,298	138,912,968	138,965,188,837	188.00	240,000	299,509	513,978	130,103,237	125,313,405,187	184.47
99315	252,896	301,134	138,912,968	138,965,188,837	182.05	234,713	259,797	279,208	130,105,002	125,320,504,826	180.40
99316	249,838	301,835	138,912,968	138,965,188,837	179.85	235,806	265,880	284,511	130,105,228	125,319,765,046	181.24
99318	54,210	74,893	138,912,968	138,965,188,837	39.02	48,513	66,736	67,523	130,105,942	125,337,357,435	37.29
99379	1,038	1,288	138,912,968	138,965,188,837	0.75	979	1,017	1,215	130,106,109	125,343,174,586	0.75
99380	770	940	138,912,968	138,965,188,837	0.55	695	713	852	130,106,103	125,343,204,060	0.53
94004	1,039	11,944	138,912,968	138,965,188,837	0.75	902	1,050	10,050	130,106,072	125,343,126,749	0.69
Q5003	8,616	40,550	138,912,968	138,965,188,837	6.20	7,544	8,716	36,270	130,105,846	125,342,088,632	5.80
Q5004	4,516	17,331	138,912,968	138,965,188,837	3.25	4,073	4,614	15,585	130,106,027	125,342,750,228	3.13
All Current Codes (99304, 99305, 99306, 99307, 99308, 99309, 99310, 99315, 99316, 99318, 99379, 99380, 94004, Q5003, Q5004)	1,443,830	9,951,876	138,912,968	138,965,188,837	1,039.38	1,288,971	1,767,029	8,019,919	130,047,523	125,067,041,454	991.15
99301	26,999	33,328	138,912,968	138,965,188,837	19.44	17,449	20,604	22,110	130,106,012	125,341,368,380	13.41
99302	35,067	43,489	138,912,968	138,965,188,837	25.24	27,254	30,374	34,160	130,105,909	125,340,527,702	20.95
99303	81,116	113,473	138,912,968	138,965,188,837	58.39	69,269	82,370	98,089	130,105,583	125,335,820,663	53.24
99311	104,693	253,043	138,912,968	138,965,188,837	75.37	75,214	104,835	197,750	130,104,914	125,331,173,675	57.81
99312	123,283	397,085	138,912,968	138,965,188,837	88.75	92,644	130,118	302,050	130,103,884	125,326,227,342	71.21
99313	77,867	163,766	138,912,968	138,965,188,837	56.05	60,784	80,065	136,510	130,105,490	125,334,951,963	46.72
G0066	0	0	138,912,968	138,965,188,837	0.00	0	0	0	130,106,111	125,343,269,494	0.00

Table 1. Summary of Nursing Home Facility Care Codes between January 1, 2000 and December 31, 2012, by Setting and Code Group

Group	Prevalent					Incident					
	Patients	Number of Claims	Eligible Members	Member-Days	Patients per 100K Eligible Members	New Patients	New Claims	Number of Total Claims	Eligible Members	Member-Days	New Patients per 100K Eligible Members
All Past Codes (99301, 99302, 99303, 99311, 99312, 99313, G0066)	183,535	772,509	138,912,968	138,965,188,837	132.12	140,477	189,858	585,048	130,101,373	125,316,297,909	107.98
Non-Acute Institutionalized Care Setting											
99304	47,342	53,027	138,912,968	138,965,188,837	34.08	43,232	45,778	48,411	130,105,955	125,339,313,961	33.23
99305	139,287	166,550	138,912,968	138,965,188,837	100.27	127,488	140,643	152,888	130,105,528	125,331,054,313	97.99
99306	213,649	268,568	138,912,968	138,965,188,837	153.80	197,960	224,798	249,076	130,105,003	125,323,710,527	152.15
99307	204,016	504,595	138,912,968	138,965,188,837	146.87	177,747	241,801	439,220	130,104,073	125,315,611,751	136.62
99308	367,938	1,187,410	138,912,968	138,965,188,837	264.87	327,682	455,116	1,050,082	130,101,539	125,287,271,492	251.87
99309	318,679	884,726	138,912,968	138,965,188,837	229.41	285,350	385,847	800,153	130,103,023	125,298,847,229	219.33
99310	95,872	157,576	138,912,968	138,965,188,837	69.02	85,411	100,205	141,623	130,105,435	125,333,730,344	65.65
99315	81,086	89,916	138,912,968	138,965,188,837	58.37	74,133	79,466	82,297	130,105,862	125,336,379,777	56.98
99316	80,463	90,243	138,912,968	138,965,188,837	57.92	75,503	81,748	84,721	130,105,905	125,336,093,186	58.03
99318	20,953	27,626	138,912,968	138,965,188,837	15.08	17,058	22,970	23,168	130,106,077	125,341,208,791	13.11
99379	194	218	138,912,968	138,965,188,837	0.14	189	196	213	130,106,111	125,343,252,055	0.15
99380	137	168	138,912,968	138,965,188,837	0.10	132	138	163	130,106,110	125,343,256,718	0.10
94004	353	1,681	138,912,968	138,965,188,837	0.25	305	349	1,619	130,106,106	125,343,228,832	0.23
Q5003	2,371	3,278	138,912,968	138,965,188,837	1.71	1,782	2,100	2,592	130,106,090	125,343,089,789	1.37
Q5004	1,256	2,340	138,912,968	138,965,188,837	0.90	995	1,209	1,994	130,106,102	125,343,150,127	0.76
All Current Codes (99304, 99305, 99306, 99307, 99308, 99309, 33910, 99315, 99316, 99318, 99379, 99380, 94004, Q5003, Q5004)	599,873	2,647,454	138,912,968	138,965,188,837	431.83	535,158	710,964	2,247,353	130,094,061	125,246,347,321	411.36
99301	17,807	20,396	138,912,968	138,965,188,837	12.82	9,135	10,166	10,783	130,106,075	125,342,315,238	7.02
99302	20,483	24,095	138,912,968	138,965,188,837	14.75	13,908	14,969	16,710	130,106,012	125,341,905,602	10.69
99303	41,578	53,872	138,912,968	138,965,188,837	29.93	32,969	37,388	43,832	130,105,891	125,339,928,779	25.34
99311	67,897	128,016	138,912,968	138,965,188,837	48.88	41,741	52,094	91,758	130,105,690	125,337,612,100	32.08
99312	80,155	153,378	138,912,968	138,965,188,837	57.70	54,224	68,899	115,047	130,105,536	125,336,161,535	41.68
99313	47,151	79,026	138,912,968	138,965,188,837	33.94	32,430	38,831	59,129	130,105,813	125,339,456,927	24.93

Table 1. Summary of Nursing Home Facility Care Codes between January 1, 2000 and December 31, 2012, by Setting and Code Group

Group	Prevalent					Incident					
	Patients	Number of Claims	Eligible Members	Member-Days	Patients per 100K Eligible Members	New Patients	New Claims	Number of Total Claims	Eligible Members	Member-Days	New Patients per 100K Eligible Members
G0066	0	0	138,912,968	138,965,188,837	0.00	0	0	0	130,106,111	125,343,269,494	0.00
All Past Codes (99301, 99302, 99303, 99311, 99312, 99313, G0066)	115,279	304,437	138,912,968	138,965,188,837	82.99	80,631	104,160	240,315	130,104,883	125,331,624,761	61.97

Figure 1a. Number of Prevalent and Incident Nursing Home Facility Care Code Patients per 100,000 Eligible Members between January 1, 2000 and December 31, 2011 by Code in Any Care Setting (Current Codes)

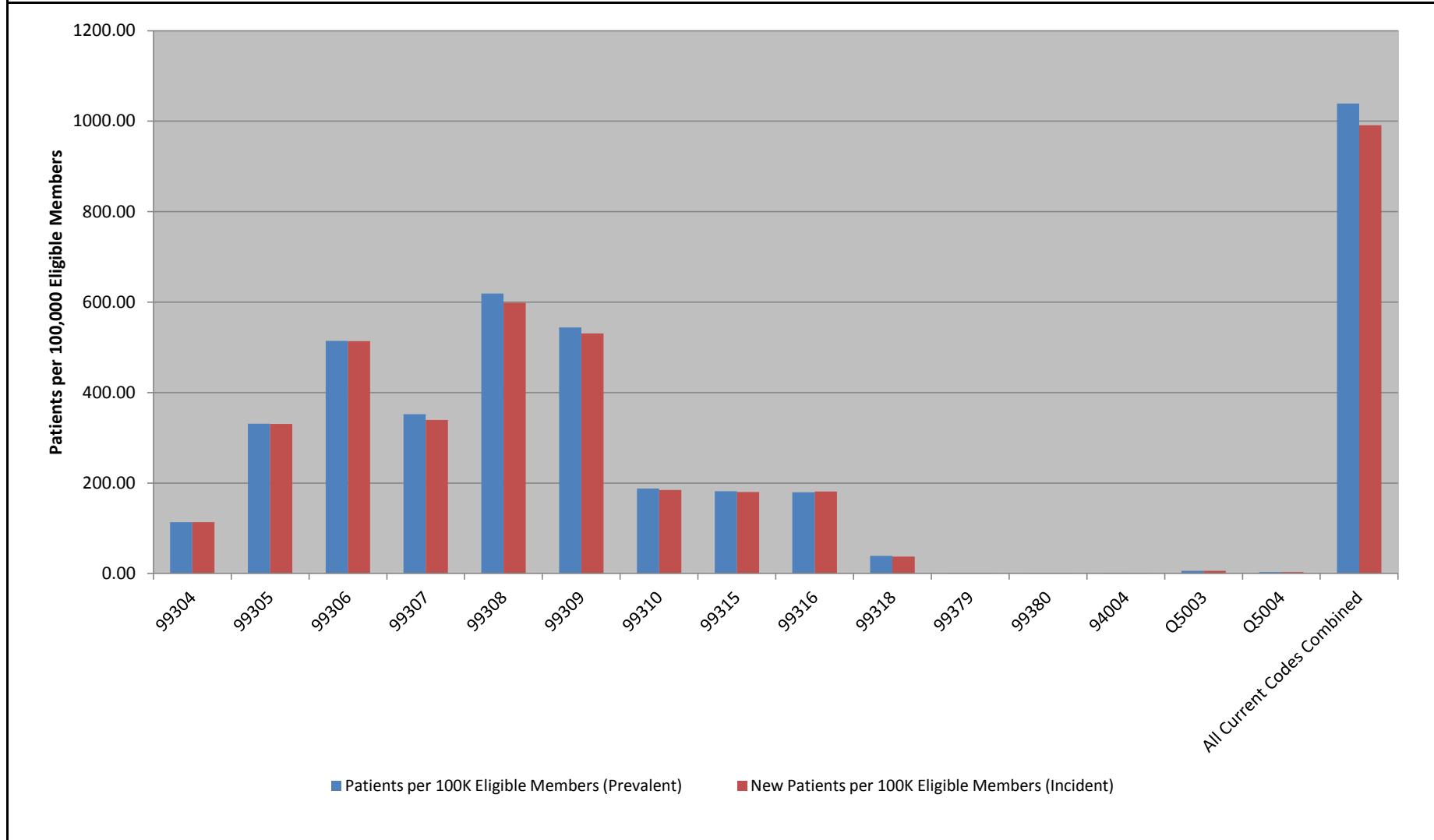


Figure 1b. Number of Prevalent and Incident Nursing Home Facility Care Code Patients per 100,000 Eligible Members between January 1, 2000 and December 31, 2011 by Code in the Non-Acute Institutionalized Care Setting (Current Codes)

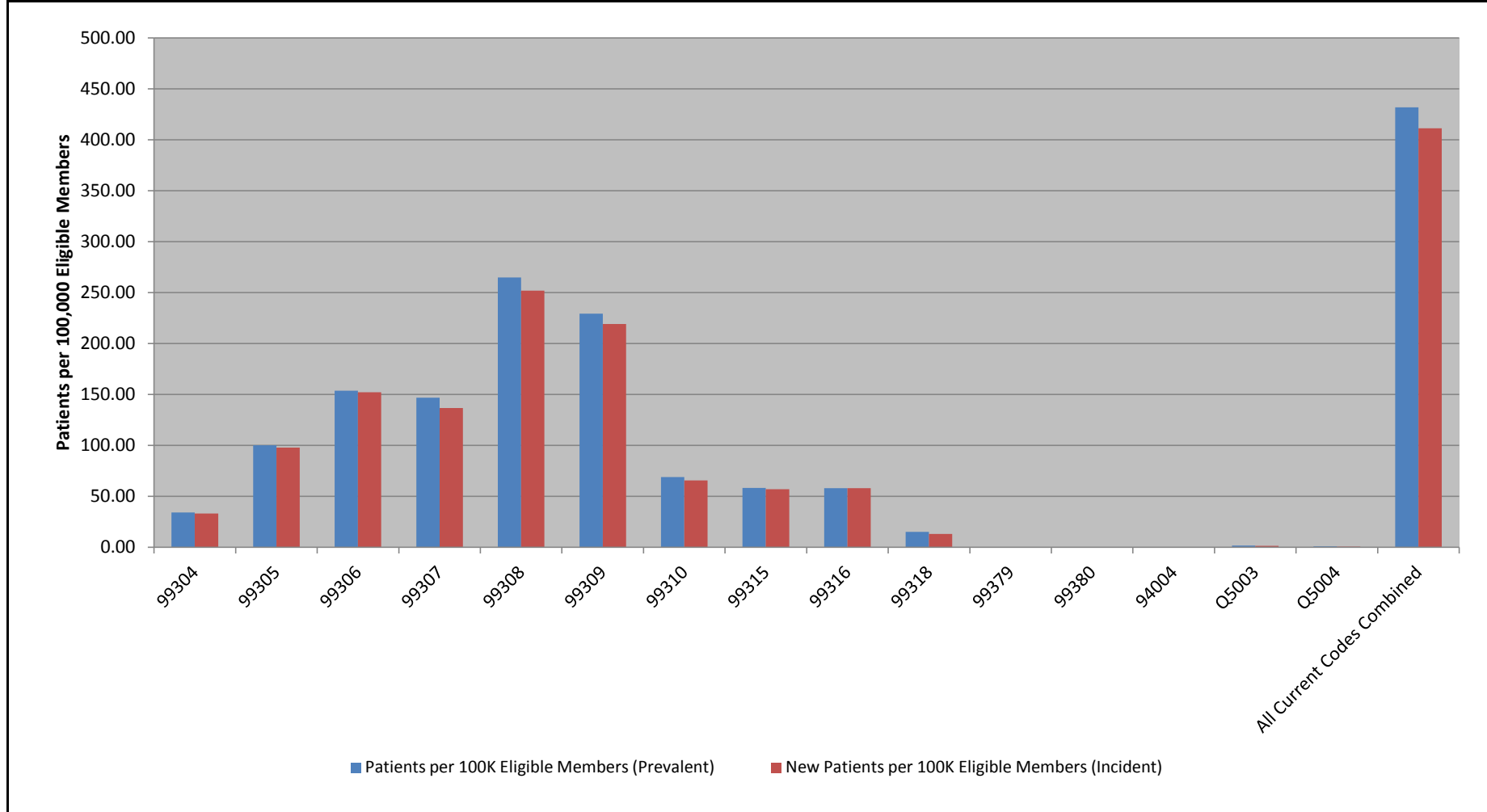


Figure 1c. Number of Prevalent and Incident Nursing Home Facility Care Code Patients per 100,000 Eligible Members between January 1, 2000 and December 31, 2011 by Code in Any Care Setting (Past Codes)

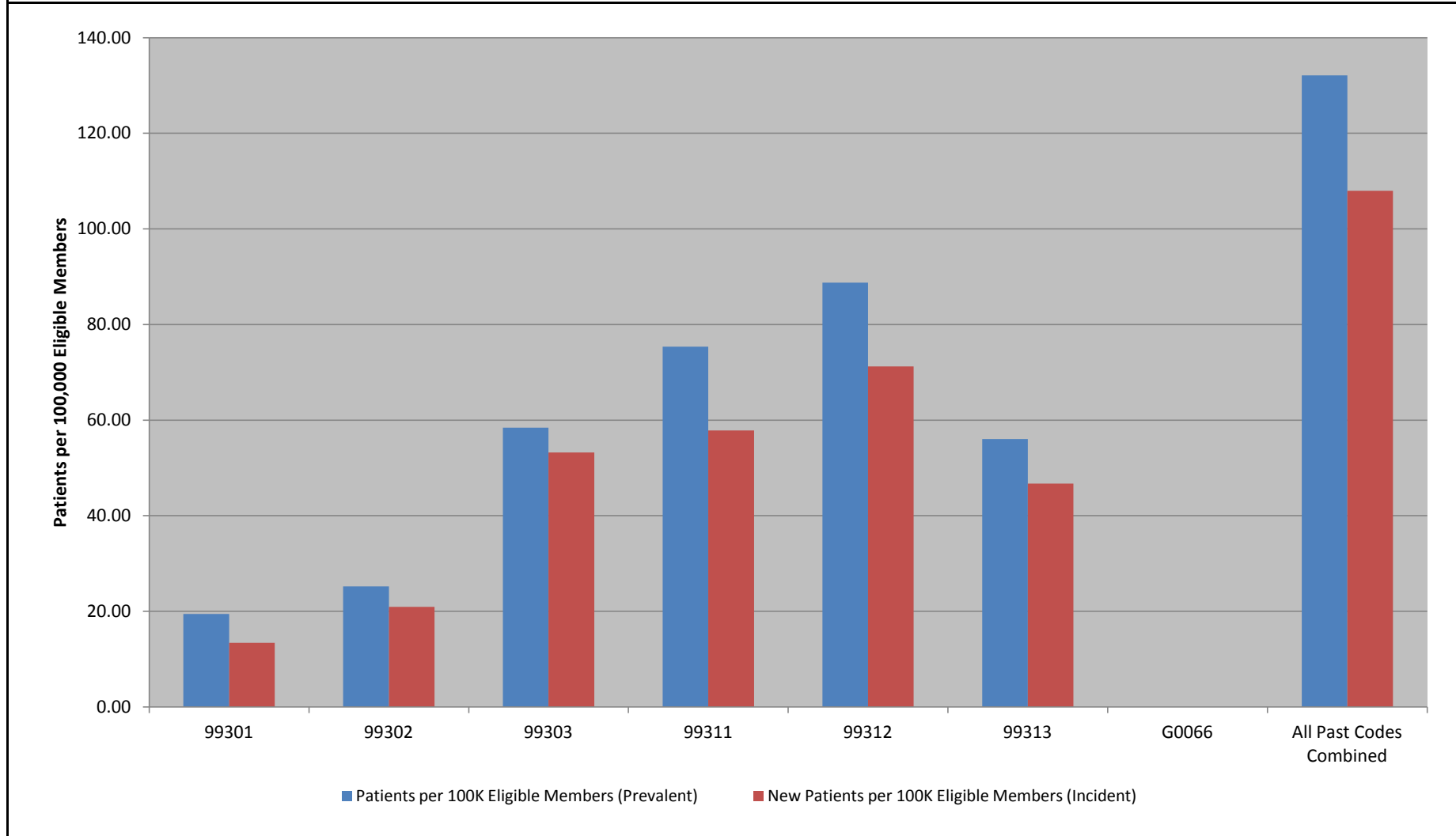


Figure 1d. Number of Prevalent and Incident Nursing Home Facility Care Code Patients per 100,000 Eligible Members between January 1, 2000 and December 31, 2011 by Code in the Non-Acute Institutionalized Care Setting (Past Codes)

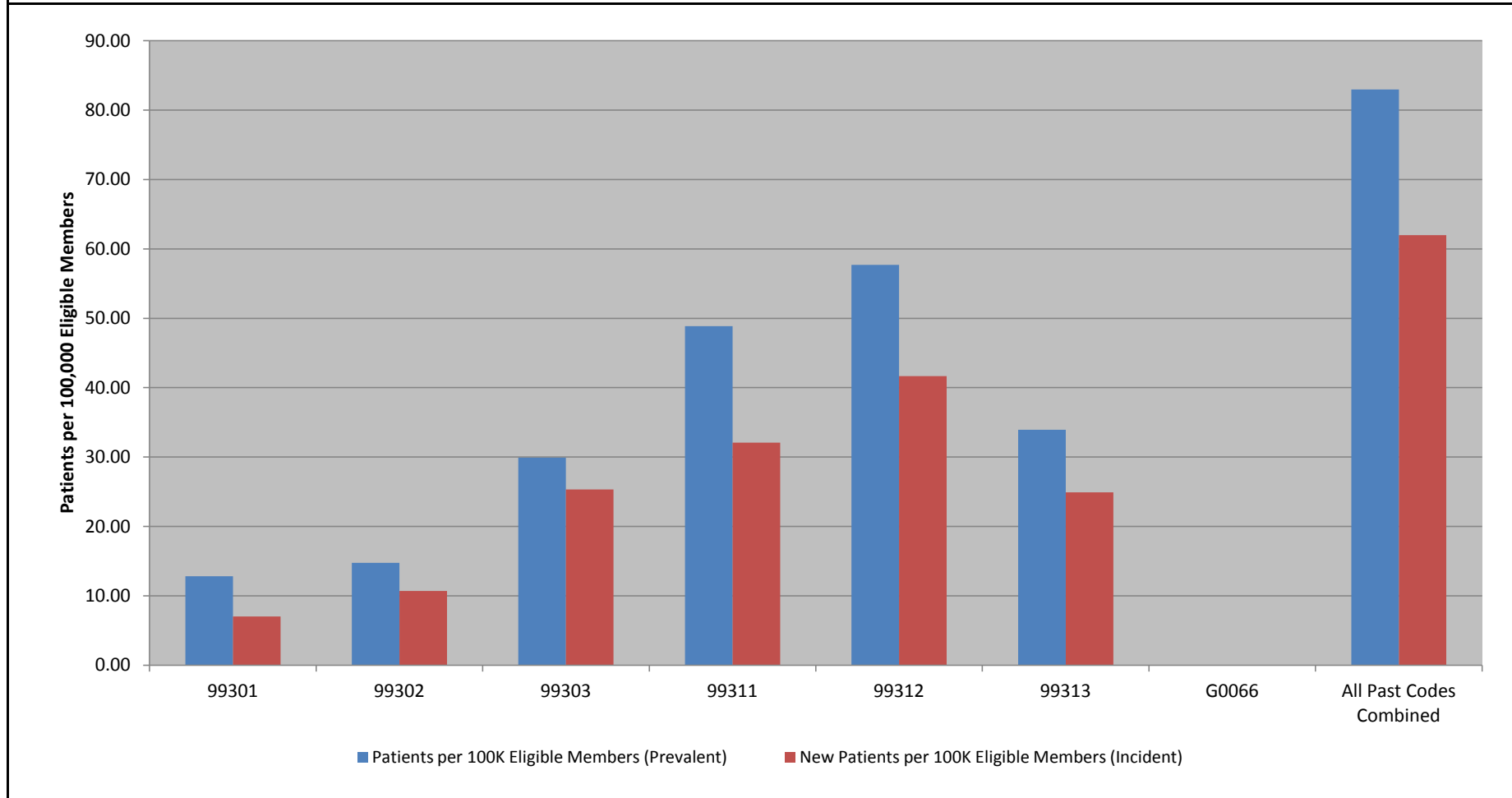


Table 2. Summary of Nursing Home Facility Care Codes between January 1, 2000 and December 31, 2012, by Setting, Code Group, and Age Group

Group	Prevalent					Incident					
	Patients	Number of Claims	Eligible Members	Member-Days	Patients per 100K Eligible Members	New Patients	New Claims	Number of Total Claims	Eligible Members	Member-Days	New Patients per 100K Eligible Members
Any Care Setting											
99304											
0 to 64 years	19,764	23,357	128,994,999	123,254,355,204	15.32	17,990	18,955	21,251	119,894,034	110,584,673,371	15.00
65+ years	138,303	171,683	13,132,989	15,710,833,633	1,053.10	129,709	142,276	160,634	12,773,830	14,744,642,925	1,015.43
99305											
0 to 64 years	62,891	80,738	128,994,999	123,254,355,204	48.75	57,544	63,150	74,091	119,893,784	110,580,733,634	48.00
65+ years	397,995	548,637	13,132,989	15,710,833,633	3,030.50	373,121	435,417	513,603	12,771,941	14,718,675,484	2,921.41
99306											
0 to 64 years	108,035	147,694	128,994,999	123,254,355,204	83.75	98,949	111,572	135,059	119,893,280	110,576,295,101	82.53
65+ years	607,653	924,309	13,132,989	15,710,833,633	4,626.92	570,396	701,696	864,936	12,769,631	14,694,312,892	4,466.82
99307											
0 to 64 years	54,819	123,708	128,994,999	123,254,355,204	42.50	48,536	60,306	107,871	119,893,601	110,579,987,908	40.48
65+ years	436,493	1,466,944	13,132,989	15,710,833,633	3,323.64	394,389	574,849	1,261,215	12,766,282	14,686,166,125	3,089.30
99308											
0 to 64 years	107,677	300,828	128,994,999	123,254,355,204	83.47	96,459	120,094	261,083	119,892,697	110,573,112,563	80.45
65+ years	755,462	3,633,441	13,132,989	15,710,833,633	5,752.40	684,628	1,025,423	3,097,897	12,754,218	14,614,774,315	5,367.86
99309											
0 to 64 years	95,485	250,479	128,994,999	123,254,355,204	74.02	85,914	106,411	220,538	119,892,934	110,574,944,756	71.66
65+ years	663,605	2,752,632	13,132,989	15,710,833,633	5,052.96	606,938	880,558	2,419,489	12,760,323	14,643,752,403	4,756.45
99310											
0 to 64 years	33,599	59,648	128,994,999	123,254,355,204	26.05	30,359	34,820	53,445	119,893,827	110,583,008,607	25.32
65+ years	228,168	510,650	13,132,989	15,710,833,633	1,737.37	210,100	264,689	460,284	12,771,819	14,730,396,580	1,645.03
99315											
0 to 64 years	41,806	48,400	128,994,999	123,254,355,204	32.41	38,196	40,760	44,221	119,893,959	110,582,694,511	31.86
65+ years	211,470	252,734	13,132,989	15,710,833,633	1,610.22	196,847	219,037	234,963	12,773,486	14,737,810,315	1,541.06
99316											
0 to 64 years	42,630	49,222	128,994,999	123,254,355,204	33.05	39,525	42,463	45,637	119,893,956	110,582,566,417	32.97
65+ years	207,692	252,613	13,132,989	15,710,833,633	1,581.45	196,723	223,417	238,858	12,773,732	14,737,198,629	1,540.06

Table 2. Summary of Nursing Home Facility Care Codes between January 1, 2000 and December 31, 2012, by Setting, Code Group, and Age Group

Group	Prevalent					Incident					
	Patients	Number of Claims	Eligible Members	Member-Days	Patients per 100K Eligible Members	New Patients	New Claims	Number of Total Claims	Eligible Members	Member-Days	New Patients per 100K Eligible Members
Any Care Setting (continued)											
99318											
0 to 64 years	4,987	6,131	128,994,999	123,254,355,204	3.87	4,146	5,070	5,164	119,894,133	110,585,876,338	3.46
65+ years	49,394	68,762	13,132,989	15,710,833,633	376.11	44,504	61,666	62,356	12,774,368	14,751,481,097	348.39
99379											
0 to 64 years	356	429	128,994,999	123,254,355,204	0.28	326	340	390	119,894,148	110,586,296,193	0.27
65+ years	682	859	13,132,989	15,710,833,633	5.19	653	677	825	12,774,524	14,756,878,393	5.11
99380											
0 to 64 years	381	447	128,994,999	123,254,355,204	0.30	325	333	380	119,894,143	110,586,296,899	0.27
65+ years	389	493	13,132,989	15,710,833,633	2.96	370	380	472	12,774,525	14,756,907,161	2.90
94004											
0 to 64 years	449	3,037	128,994,999	123,254,355,204	0.35	386	461	2,585	119,894,136	110,586,273,076	0.32
65+ years	594	8,907	13,132,989	15,710,833,633	4.52	516	589	7,410	12,774,497	14,756,853,673	4.04
Q5003											
0 to 64 years	1,107	4,398	128,994,999	123,254,355,204	0.86	955	1,042	3,962	119,894,122	110,586,219,373	0.80
65+ years	7,550	36,152	13,132,989	15,710,833,633	57.49	6,600	7,674	32,217	12,774,273	14,755,869,259	51.67
Q5004											
0 to 64 years	643	2,986	128,994,999	123,254,355,204	0.50	595	642	2,672	119,894,139	110,586,267,751	0.50
65+ years	3,894	14,345	13,132,989	15,710,833,633	29.65	3,481	3,972	12,854	12,774,440	14,756,482,477	27.25
All Current Codes (99304, 99305, 99306, 99307, 99308, 99309, 33910, 99315, 99316, 99318, 99379, 99380, 94004, Q5003, Q5004)											
0 to 64 years	219,560	804,337	128,994,999	123,254,355,204	170.21	196,414	236,830	679,286	119,890,197	110,559,174,438	163.83
65+ years	1,231,696	9,147,539	13,132,989	15,710,833,633	9,378.64	1,097,334	1,530,199	7,326,476	12,717,873	14,507,867,016	8,628.28
99301											
0 to 64 years	4,636	5,618	128,994,999	123,254,355,204	3.59	3,236	3,649	4,013	119,894,137	110,585,990,750	2.70
65+ years	22,437	27,710	13,132,989	15,710,833,633	170.84	14,249	16,955	18,095	12,774,432	14,755,377,630	111.54
99302											
0 to 64 years	7,302	9,099	128,994,999	123,254,355,204	5.66	5,871	6,475	7,375	119,894,112	110,585,729,498	4.90
65+ years	27,843	34,390	13,132,989	15,710,833,633	212.01	21,433	23,899	26,781	12,774,346	14,754,798,204	167.78

Table 2. Summary of Nursing Home Facility Care Codes between January 1, 2000 and December 31, 2012, by Setting, Code Group, and Age Group

Group	Prevalent					Incident					
	Patients	Number of Claims	Eligible Members	Member-Days	Patients per 100K Eligible Members	New Patients	New Claims	Number of Total Claims	Eligible Members	Member-Days	New Patients per 100K Eligible Members
Any Care Setting (continued)											
99303											
0 to 64 years	16,918	22,674	128,994,999	123,254,355,204	13.12	14,340	16,498	19,468	119,894,051	110,584,821,867	11.96
65+ years	64,472	90,799	13,132,989	15,710,833,633	490.92	55,129	65,872	78,598	12,774,062	14,750,998,796	431.57
99311											
0 to 64 years	19,931	52,211	128,994,999	123,254,355,204	15.45	15,869	19,687	45,216	119,894,011	110,583,991,486	13.24
65+ years	85,322	200,832	13,132,989	15,710,833,633	649.68	59,673	85,148	152,195	12,773,428	14,747,182,189	467.17
99312											
0 to 64 years	21,586	46,864	128,994,999	123,254,355,204	16.73	17,255	21,911	38,568	119,893,957	110,584,003,713	14.39
65+ years	102,370	350,221	13,132,989	15,710,833,633	779.49	75,780	108,207	263,204	12,772,424	14,742,223,629	593.31
99313											
0 to 64 years	13,683	25,420	128,994,999	123,254,355,204	10.61	10,926	13,263	21,288	119,894,055	110,584,977,837	9.11
65+ years	64,509	138,346	13,132,989	15,710,833,633	491.20	50,037	66,802	115,167	12,773,961	14,749,974,126	391.71
G0066											
0 to 64 years	0	0	128,994,999	123,254,355,204	0.00	0	0	0	119,894,149	110,586,328,343	0.00
65+ years	0	0	13,132,989	15,710,833,633	0.00	0	0	0	12,774,527	14,756,941,151	0.00
All Past Codes (99301, 99302, 99303, 99311, 99312, 99313, G0066)											
0 to 64 years	38,877	119,812	128,994,999	123,254,355,204	30.14	32,173	40,105	102,471	119,893,733	110,581,589,691	26.83
65+ years	145,816	652,697	13,132,989	15,710,833,633	1,110.30	108,982	149,753	481,691	12,770,077	14,734,708,218	853.42
Non-Acute Institutionalized Care Setting											
99304											
0 to 64 years	5,770	6,206	128,994,999	123,254,355,204	4.47	5,173	5,327	5,561	119,894,123	110,585,872,034	4.31
65+ years	41,592	46,821	13,132,989	15,710,833,633	316.70	38,076	40,451	42,850	12,774,387	14,753,441,927	298.07
99305											
0 to 64 years	19,354	21,905	128,994,999	123,254,355,204	15.00	17,330	18,337	19,696	119,894,058	110,584,733,882	14.45
65+ years	120,091	144,645	13,132,989	15,710,833,633	914.42	110,290	122,306	133,184	12,773,973	14,746,320,431	863.40

Table 2. Summary of Nursing Home Facility Care Codes between January 1, 2000 and December 31, 2012, by Setting, Code Group, and Age Group

Group	Prevalent					Incident					
	Patients	Number of Claims	Eligible Members	Member-Days	Patients per 100K Eligible Members	New Patients	New Claims	Number of Total Claims	Eligible Members	Member-Days	New Patients per 100K Eligible Members
Non-Acute Institutionalized Care Setting (continued)											
99306											
0 to 64 years	32,471	38,338	128,994,999	123,254,355,204	25.17	29,392	31,801	34,776	119,893,943	110,583,545,182	24.51
65+ years	181,465	230,230	13,132,989	15,710,833,633	1,381.75	168,805	192,997	214,285	12,773,528	14,740,165,345	1,321.52
99307											
0 to 64 years	20,366	37,679	128,994,999	123,254,355,204	15.79	17,337	20,599	32,804	119,894,013	110,584,239,065	14.46
65+ years	184,237	466,916	13,132,989	15,710,833,633	1,402.86	160,790	221,202	406,205	12,772,537	14,731,372,686	1,258.87
99308											
0 to 64 years	40,587	87,810	128,994,999	123,254,355,204	31.46	35,445	42,497	77,209	119,893,801	110,581,901,787	29.56
65+ years	328,555	1,099,600	13,132,989	15,710,833,633	2,501.75	293,044	412,619	972,050	12,770,051	14,705,369,705	2,294.78
99309											
0 to 64 years	35,600	70,420	128,994,999	123,254,355,204	27.60	31,112	37,105	62,344	119,893,859	110,582,589,408	25.95
65+ years	284,103	814,306	13,132,989	15,710,833,633	2,163.28	254,955	348,742	737,394	12,771,549	14,716,257,821	1,996.27
99310											
0 to 64 years	11,361	16,435	128,994,999	123,254,355,204	8.81	9,949	10,961	14,544	119,894,081	110,585,317,028	8.30
65+ years	84,660	141,141	13,132,989	15,710,833,633	644.64	75,575	89,244	127,036	12,773,880	14,748,413,316	591.64
99315											
0 to 64 years	12,001	12,873	128,994,999	123,254,355,204	9.30	10,768	11,254	11,567	119,894,095	110,585,342,678	8.98
65+ years	69,158	77,043	13,132,989	15,710,833,633	526.60	63,428	68,212	70,727	12,774,297	14,751,037,099	496.53
99316											
0 to 64 years	11,887	12,833	128,994,999	123,254,355,204	9.22	10,970	11,525	11,859	119,894,103	110,585,324,053	9.15
65+ years	68,665	77,410	13,132,989	15,710,833,633	522.84	64,616	70,223	72,860	12,774,338	14,750,769,133	505.83
99318											
0 to 64 years	2,207	2,586	128,994,999	123,254,355,204	1.71	1,617	1,914	1,931	119,894,148	110,586,154,646	1.35
65+ years	18,816	25,040	13,132,989	15,710,833,633	143.27	15,490	21,056	21,235	12,774,493	14,755,054,145	121.26
99379											
0 to 64 years	19	20	128,994,999	123,254,355,204	0.01	16	17	17	119,894,149	110,586,326,796	0.01
65+ years	175	198	13,132,989	15,710,833,633	1.33	173	179	196	12,774,527	14,756,925,259	1.35

Table 2. Summary of Nursing Home Facility Care Codes between January 1, 2000 and December 31, 2012, by Setting, Code Group, and Age Group

Group	Prevalent					Incident					
	Patients	Number of Claims	Eligible Members	Member-Days	Patients per 100K Eligible Members	New Patients	New Claims	Number of Total Claims	Eligible Members	Member-Days	New Patients per 100K Eligible Members
Non-Acute Institutionalized Care Setting (continued)											
99380											
0 to 64 years	34	59	128,994,999	123,254,355,204	0.03	33	39	58	119,894,148	110,586,324,440	0.03
65+ years	103	109	13,132,989	15,710,833,633	0.78	99	99	105	12,774,527	14,756,932,278	0.77
94004											
0 to 64 years	135	378	128,994,999	123,254,355,204	0.10	113	121	350	119,894,147	110,586,316,322	0.09
65+ years	220	1,303	13,132,989	15,710,833,633	1.68	193	228	1,269	12,774,523	14,756,912,510	1.51
Q5003											
0 to 64 years	202	266	128,994,999	123,254,355,204	0.16	166	185	224	119,894,148	110,586,314,257	0.14
65+ years	2,174	3,012	13,132,989	15,710,833,633	16.55	1,619	1,915	2,368	12,774,507	14,756,775,532	12.67
Q5004											
0 to 64 years	127	235	128,994,999	123,254,355,204	0.10	112	138	215	119,894,148	110,586,316,533	0.09
65+ years	1,133	2,105	13,132,989	15,710,833,633	8.63	886	1,071	1,778	12,774,517	14,756,833,594	6.94
All Current Codes (99304, 99305, 99306, 99307, 99308, 99309, 33910, 99315, 99316, 99318, 99379, 99380, 94004, Q5003, Q5004)											
0 to 64 years	79,529	207,100	128,994,999	123,254,355,204	61.65	70,266	82,614	180,335	119,893,303	110,577,505,233	58.61
65+ years	522,771	2,440,354	13,132,989	15,710,833,633	3,980.59	466,508	628,350	2,063,236	12,762,768	14,668,842,088	3,655.23
99301											
0 to 64 years	2,911	3,392	128,994,999	123,254,355,204	2.26	1,712	1,869	2,065	119,894,146	110,586,151,788	1.43
65+ years	14,943	17,004	13,132,989	15,710,833,633	113.78	7,439	8,297	8,717	12,774,490	14,756,163,450	58.23
99302											
0 to 64 years	4,125	5,009	128,994,999	123,254,355,204	3.20	3,012	3,206	3,727	119,894,131	110,586,028,664	2.51
65+ years	16,391	19,086	13,132,989	15,710,833,633	124.81	10,914	11,763	12,982	12,774,435	14,755,876,938	85.44
99303											
0 to 64 years	8,994	11,370	128,994,999	123,254,355,204	6.97	7,355	8,148	9,480	119,894,111	110,585,599,691	6.13
65+ years	32,693	42,502	13,132,989	15,710,833,633	248.94	25,692	29,240	34,340	12,774,325	14,754,329,088	201.12
99311											
0 to 64 years	11,774	32,510	128,994,999	123,254,355,204	9.13	8,482	10,117	27,937	119,894,096	110,584,998,685	7.07
65+ years	56,436	95,506	13,132,989	15,710,833,633	429.73	33,411	41,977	63,520	12,774,136	14,752,613,415	261.55

Table 2. Summary of Nursing Home Facility Care Codes between January 1, 2000 and December 31, 2012, by Setting, Code Group, and Age Group

Group	Prevalent					Incident					
	Patients	Number of Claims	Eligible Members	Member-Days	Patients per 100K Eligible Members	New Patients	New Claims	Number of Total Claims	Eligible Members	Member-Days	New Patients per 100K Eligible Members
Non-Acute Institutionalized Care Setting (continued)											
99312											
0 to 64 years	13,501	23,622	128,994,999	123,254,355,204	10.47	10,104	12,080	18,791	119,894,074	110,585,129,382	8.43
65+ years	67,000	129,756	13,132,989	15,710,833,633	510.17	44,304	56,819	96,201	12,773,990	14,751,032,153	346.83
99313											
0 to 64 years	8,081	13,679	128,994,999	123,254,355,204	6.26	5,973	6,844	10,945	119,894,106	110,585,642,468	4.98
65+ years	39,229	65,347	13,132,989	15,710,833,633	298.71	26,536	31,987	48,178	12,774,251	14,753,814,459	207.73
G0066											
0 to 64 years	0	0	128,994,999	123,254,355,204	0.00	0	0	0	119,894,149	110,586,328,343	0.00
65+ years	0	0	13,132,989	15,710,833,633	0.00	0	0	0	12,774,527	14,756,941,151	0.00
All Past Codes (99301, 99302, 99303, 99311, 99312, 99313, G0066)											
0 to 64 years	22,698	64,927	128,994,999	123,254,355,204	17.60	17,813	21,623	55,975	119,893,991	110,583,744,893	14.86
65+ years	93,237	239,510	13,132,989	15,710,833,633	709.95	63,178	82,537	183,895	12,773,391	14,747,879,868	494.61

Table 3. Summary of Nursing Home Facility Care Codes between January 1, 2000 and December 31, 2012, by Setting, Code Group, and Sex

Group	Prevalent					Incident					
	Patients	Number of Claims	Eligible Members	Member-Days	Patients per 100K Eligible Members	New Patients	New Claims	Number of Total Claims	Eligible Members	Member-Days	New Patients per 100K Eligible Members
Any Care Setting											
99304											
Female	100,772	124,865	70,681,931	71,887,694,323	142.57	94,209	103,366	116,403	66,340,620	64,938,712,815	142.01
Male	57,135	70,157	68,202,809	67,053,569,594	83.77	53,360	57,849	65,485	63,738,940	60,369,331,797	83.72
Unknown	17	18	28,228	23,924,920	60.22	15	16	16	25,793	21,271,684	58.16
99305											
Female	293,001	401,617	70,681,931	71,887,694,323	414.53	274,090	320,145	375,475	66,339,512	64,919,321,782	413.16
Male	167,078	227,704	68,202,809	67,053,569,594	244.97	155,922	178,382	212,235	63,738,082	60,358,817,872	244.63
Unknown	39	54	28,228	23,924,920	138.16	36	40	49	25,792	21,269,464	139.58
99306											
Female	445,151	671,528	70,681,931	71,887,694,323	629.79	417,267	513,134	627,630	66,338,127	64,901,467,735	629.00
Male	268,858	400,401	68,202,809	67,053,569,594	394.20	250,686	300,067	372,453	63,736,816	60,347,872,805	393.31
Unknown	65	74	28,228	23,924,920	230.27	62	67	71	25,793	21,267,453	240.38
99307											
Female	321,457	1,090,666	70,681,931	71,887,694,323	454.79	289,775	428,900	935,292	66,335,474	64,894,336,439	436.83
Male	168,109	499,875	68,202,809	67,053,569,594	246.48	151,873	206,201	434,375	63,736,352	60,350,550,942	238.28
Unknown	36	111	28,228	23,924,920	127.53	33	54	99	25,793	21,266,652	127.94
99308											
Female	556,077	2,692,681	70,681,931	71,887,694,323	786.73	503,720	765,579	2,290,040	66,327,303	64,840,258,082	759.45
Male	303,419	1,241,241	68,202,809	67,053,569,594	444.88	274,890	379,840	1,071,986	63,732,109	60,326,369,782	431.32
Unknown	69	347	28,228	23,924,920	244.44	61	98	319	25,790	21,259,014	236.53
99309											
Female	484,771	2,021,473	70,681,931	71,887,694,323	685.85	442,874	652,042	1,771,416	66,331,633	64,862,795,059	667.67
Male	271,204	981,385	68,202,809	67,053,569,594	397.64	247,804	334,843	870,771	63,733,937	60,334,640,109	388.81
Unknown	70	253	28,228	23,924,920	247.98	64	84	229	25,791	21,261,991	248.15
99310											
Female	165,233	368,253	70,681,931	71,887,694,323	233.77	151,712	192,455	330,573	66,339,330	64,928,179,618	228.69
Male	95,898	202,013	68,202,809	67,053,569,594	140.61	88,269	107,033	183,376	63,738,114	60,363,954,299	138.49
Unknown	21	32	28,228	23,924,920	74.39	19	21	29	25,793	21,271,270	73.66

Table 3. Summary of Nursing Home Facility Care Codes between January 1, 2000 and December 31, 2012, by Setting, Code Group, and Sex

Group	Prevalent					Incident					
	Patients	Number of Claims	Eligible Members	Member-Days	Patients per 100K Eligible Members	New Patients	New Claims	Number of Total Claims	Eligible Members	Member-Days	New Patients per 100K Eligible Members
Any Care Setting (continued)											
99315											
Female	161,429	193,194	70,681,931	71,887,694,323	228.39	150,309	167,456	179,638	66,340,439	64,932,972,183	226.57
Male	91,444	107,915	68,202,809	67,053,569,594	134.08	84,382	92,318	99,547	63,738,770	60,366,261,634	132.39
Unknown	23	25	28,228	23,924,920	81.48	22	23	23	25,793	21,271,009	85.29
99316											
Female	158,580	192,907	70,681,931	71,887,694,323	224.36	149,919	170,252	182,083	66,340,537	64,932,605,145	225.98
Male	91,239	108,900	68,202,809	67,053,569,594	133.78	85,868	95,607	102,400	63,738,898	60,365,888,720	134.72
Unknown	19	28	28,228	23,924,920	67.31	19	21	28	25,793	21,271,181	73.66
99318											
Female	39,141	55,095	70,681,931	71,887,694,323	55.38	35,096	49,230	49,778	66,340,918	64,943,376,645	52.90
Male	15,066	19,795	68,202,809	67,053,569,594	22.09	13,414	17,503	17,742	63,739,231	60,372,707,960	21.05
Unknown	3	3	28,228	23,924,920	10.63	3	3	3	25,793	21,272,830	11.63
99379											
Female	656	819	70,681,931	71,887,694,323	0.93	626	651	784	66,341,040	64,947,686,591	0.94
Male	382	469	68,202,809	67,053,569,594	0.56	353	366	431	63,739,276	60,374,214,895	0.55
Unknown	0	0	28,228	23,924,920	0.00	0	0	0	25,793	21,273,100	0.00
99380											
Female	490	631	70,681,931	71,887,694,323	0.69	446	460	584	66,341,038	64,947,704,898	0.67
Male	280	309	68,202,809	67,053,569,594	0.41	249	253	268	63,739,272	60,374,226,062	0.39
Unknown	0	0	28,228	23,924,920	0.00	0	0	0	25,793	21,273,100	0.00
94004											
Female	553	7,072	70,681,931	71,887,694,323	0.78	488	565	6,346	66,341,018	64,947,669,542	0.74
Male	486	4,872	68,202,809	67,053,569,594	0.71	414	485	3,704	63,739,261	60,374,184,107	0.65
Unknown	0	0	28,228	23,924,920	0.00	0	0	0	25,793	21,273,100	0.00
Q5003											
Female	6,128	30,966	70,681,931	71,887,694,323	8.67	5,401	6,290	27,780	66,340,849	64,946,837,261	8.14
Male	2,488	9,584	68,202,809	67,053,569,594	3.65	2,143	2,426	8,490	63,739,204	60,373,978,271	3.36
Unknown	0	0	28,228	23,924,920	0.00	0	0	0	25,793	21,273,100	0.00

Table 3. Summary of Nursing Home Facility Care Codes between January 1, 2000 and December 31, 2012, by Setting, Code Group, and Sex

Group	Prevalent					Incident					
	Patients	Number of Claims	Eligible Members	Member-Days	Patients per 100K Eligible Members	New Patients	New Claims	Number of Total Claims	Eligible Members	Member-Days	New Patients per 100K Eligible Members
Any Care Setting (continued)											
Q5004											
Female	3,191	12,371	70,681,931	71,887,694,323	4.51	2,895	3,310	11,122	66,340,985	64,947,354,395	4.36
Male	1,325	4,960	68,202,809	67,053,569,594	1.94	1,178	1,304	4,463	63,739,249	60,374,122,733	1.85
Unknown	0	0	28,228	23,924,920	0.00	0	0	0	25,793	21,273,100	0.00
All Current Codes (99304, 99305, 99306, 99307, 99308, 99309, 33910, 99315, 99316, 99318, 99379, 99380, 94004, Q5003, Q5004)											
Female	914,518	6,715,586	70,681,931	71,887,694,323	1,293.85	814,546	1,143,768	5,339,372	66,301,502	64,758,883,967	1,228.55
Male	529,185	3,235,502	68,202,809	67,053,569,594	775.90	474,314	623,118	2,679,901	63,720,234	60,286,907,759	744.37
Unknown	127	788	28,228	23,924,920	449.91	111	143	646	25,787	21,249,728	430.45
99301											
Female	18,722	22,999	70,681,931	71,887,694,323	26.49	11,914	14,177	15,117	66,340,984	64,946,438,772	17.96
Male	8,277	10,329	68,202,809	67,053,569,594	12.14	5,535	6,427	6,993	63,739,235	60,373,656,508	8.68
Unknown	0	0	28,228	23,924,920	0.00	0	0	0	25,793	21,273,100	0.00
99302											
Female	23,290	28,796	70,681,931	71,887,694,323	32.95	17,995	20,080	22,570	66,340,912	64,945,924,554	27.13
Male	11,777	14,693	68,202,809	67,053,569,594	17.27	9,259	10,294	11,590	63,739,204	60,373,330,048	14.53
Unknown	0	0	28,228	23,924,920	0.00	0	0	0	25,793	21,273,100	0.00
99303											
Female	52,036	72,488	70,681,931	71,887,694,323	73.62	44,434	53,021	62,669	66,340,748	64,942,919,283	66.98
Male	29,080	40,985	68,202,809	67,053,569,594	42.64	24,835	29,349	35,420	63,739,042	60,371,628,280	38.96
Unknown	0	0	28,228	23,924,920	0.00	0	0	0	25,793	21,273,100	0.00
99311											
Female	70,655	170,852	70,681,931	71,887,694,323	99.96	49,923	70,898	132,192	66,340,249	64,939,519,317	75.25
Male	34,036	82,189	68,202,809	67,053,569,594	49.90	25,290	33,936	65,557	63,738,872	60,370,381,348	39.68
Unknown	2	2	28,228	23,924,920	7.09	1	1	1	25,793	21,273,010	3.88
99312											
Female	82,721	276,036	70,681,931	71,887,694,323	117.03	61,405	87,680	207,605	66,339,588	64,935,949,947	92.56
Male	40,561	121,048	68,202,809	67,053,569,594	59.47	31,239	42,438	94,445	63,738,503	60,369,004,295	49.01
Unknown	1	1	28,228	23,924,920	3.54	0	0	0	25,793	21,273,100	0.00

Table 3. Summary of Nursing Home Facility Care Codes between January 1, 2000 and December 31, 2012, by Setting, Code Group, and Sex

Group	Prevalent					Incident					
	Patients	Number of Claims	Eligible Members	Member-Days	Patients per 100K Eligible Members	New Patients	New Claims	Number of Total Claims	Eligible Members	Member-Days	New Patients per 100K Eligible Members
Any Care Setting (continued)											
99313											
Female	51,766	108,777	70,681,931	71,887,694,323	73.24	40,051	53,263	90,322	66,340,677	64,942,173,191	60.37
Male	26,101	54,989	68,202,809	67,053,569,594	38.27	20,733	26,802	46,188	63,739,020	60,371,505,672	32.53
Unknown	0	0	28,228	23,924,920	0.00	0	0	0	25,793	21,273,100	0.00
G0066											
Female	0	0	70,681,931	71,887,694,323	0.00	0	0	0	66,341,041	64,947,747,778	0.00
Male	0	0	68,202,809	67,053,569,594	0.00	0	0	0	63,739,277	60,374,248,616	0.00
Unknown	0	0	28,228	23,924,920	0.00	0	0	0	25,793	21,273,100	0.00
All Past Codes (99301, 99302, 99303, 99311, 99312, 99313, G0066)											
Female	120,449	523,381	70,681,931	71,887,694,323	170.41	90,958	124,795	390,196	66,337,919	64,929,437,532	137.11
Male	63,084	249,126	68,202,809	67,053,569,594	92.49	49,518	65,062	194,851	63,737,661	60,365,587,367	77.69
Unknown	2	2	28,228	23,924,920	7.09	1	1	1	25,793	21,273,010	3.88
Non-Acute Institutionalized Care Setting											
99304											
Female	31,027	34,888	70,681,931	71,887,694,323	43.90	28,293	30,055	31,801	66,340,960	64,945,123,962	42.65
Male	16,311	18,135	68,202,809	67,053,569,594	23.92	14,935	15,719	16,606	63,739,202	60,372,917,235	23.43
Unknown	4	4	28,228	23,924,920	14.17	4	4	4	25,793	21,272,764	15.51
99305											
Female	90,941	109,301	70,681,931	71,887,694,323	128.66	83,259	92,501	100,385	66,340,719	64,939,642,807	125.50
Male	48,331	57,233	68,202,809	67,053,569,594	70.86	44,215	48,128	52,488	63,739,017	60,370,139,557	69.37
Unknown	15	16	28,228	23,924,920	53.14	14	14	15	25,792	21,271,949	54.28
99306											
Female	136,068	171,780	70,681,931	71,887,694,323	192.51	126,350	144,603	159,635	66,340,438	64,935,064,481	190.46
Male	77,560	96,766	68,202,809	67,053,569,594	113.72	71,590	80,174	89,420	63,738,772	60,367,374,625	112.32
Unknown	21	22	28,228	23,924,920	74.39	20	21	21	25,793	21,271,421	77.54
99307											
Female	137,663	362,431	70,681,931	71,887,694,323	194.76	119,759	168,261	315,083	66,339,684	64,927,939,293	180.52
Male	66,336	142,145	68,202,809	67,053,569,594	97.26	57,973	73,523	124,120	63,738,596	60,366,400,899	90.95
Unknown	17	19	28,228	23,924,920	60.22	15	17	17	25,793	21,271,559	58.16

Table 3. Summary of Nursing Home Facility Care Codes between January 1, 2000 and December 31, 2012, by Setting, Code Group, and Sex

Group	Prevalent					Incident					
	Patients	Number of Claims	Eligible Members	Member-Days	Patients per 100K Eligible Members	New Patients	New Claims	Number of Total Claims	Eligible Members	Member-Days	New Patients per 100K Eligible Members
Non-Acute Institutionalized Care Setting (continued)											
99308											
Female	243,677	850,448	70,681,931	71,887,694,323	344.75	216,857	311,215	751,032	66,337,996	64,907,933,699	326.90
Male	124,231	336,921	68,202,809	67,053,569,594	182.15	110,799	143,868	299,013	63,737,750	60,358,067,588	173.84
Unknown	30	41	28,228	23,924,920	106.28	26	33	37	25,793	21,270,205	100.80
99309											
Female	209,464	620,649	70,681,931	71,887,694,323	296.35	187,400	261,169	561,744	66,339,071	64,916,673,497	282.49
Male	109,184	264,043	68,202,809	67,053,569,594	160.09	97,922	124,648	238,378	63,738,159	60,360,903,038	153.63
Unknown	31	34	28,228	23,924,920	109.82	28	30	31	25,793	21,270,694	108.56
99310											
Female	62,251	105,574	70,681,931	71,887,694,323	88.07	55,321	65,984	95,017	66,340,651	64,941,350,342	83.39
Male	33,611	51,992	68,202,809	67,053,569,594	49.28	30,082	34,213	46,598	63,738,991	60,371,107,480	47.20
Unknown	10	10	28,228	23,924,920	35.43	8	8	8	25,793	21,272,522	31.02
99315											
Female	53,194	59,247	70,681,931	71,887,694,323	75.26	48,839	52,566	54,452	66,340,912	64,943,169,383	73.62
Male	27,886	30,663	68,202,809	67,053,569,594	40.89	25,288	26,894	27,839	63,739,157	60,371,937,834	39.67
Unknown	6	6	28,228	23,924,920	21.26	6	6	6	25,793	21,272,560	23.26
99316											
Female	52,313	58,886	70,681,931	71,887,694,323	74.01	49,198	53,466	55,390	66,340,918	64,943,032,037	74.16
Male	28,146	31,352	68,202,809	67,053,569,594	41.27	26,301	28,278	29,326	63,739,194	60,371,788,377	41.26
Unknown	4	5	28,228	23,924,920	14.17	4	4	5	25,793	21,272,772	15.51
99318											
Female	15,680	21,042	70,681,931	71,887,694,323	22.18	12,830	17,625	17,770	66,341,014	64,946,168,031	19.34
Male	5,273	6,584	68,202,809	67,053,569,594	7.73	4,228	5,345	5,398	63,739,270	60,373,767,660	6.63
Unknown	0	0	28,228	23,924,920	0.00	0	0	0	25,793	21,273,100	0.00
99379											
Female	131	150	70,681,931	71,887,694,323	0.19	128	133	147	66,341,041	64,947,735,786	0.19
Male	63	68	68,202,809	67,053,569,594	0.09	61	63	66	63,739,277	60,374,243,169	0.10
Unknown	0	0	28,228	23,924,920	0.00	0	0	0	25,793	21,273,100	0.00

Table 3. Summary of Nursing Home Facility Care Codes between January 1, 2000 and December 31, 2012, by Setting, Code Group, and Sex

Group	Prevalent					Incident					
	Patients	Number of Claims	Eligible Members	Member-Days	Patients per 100K Eligible Members	New Patients	New Claims	Number of Total Claims	Eligible Members	Member-Days	New Patients per 100K Eligible Members
Non-Acute Institutionalized Care Setting (continued)											
99380											
Female	94	118	70,681,931	71,887,694,323	0.13	91	95	115	66,341,041	64,947,738,791	0.14
Male	43	50	68,202,809	67,053,569,594	0.06	41	43	48	63,739,276	60,374,244,827	0.06
Unknown	0	0	28,228	23,924,920	0.00	0	0	0	25,793	21,273,100	0.00
94004											
Female	190	847	70,681,931	71,887,694,323	0.27	166	193	818	66,341,038	64,947,724,894	0.25
Male	163	834	68,202,809	67,053,569,594	0.24	139	156	801	63,739,275	60,374,230,838	0.22
Unknown	0	0	28,228	23,924,920	0.00	0	0	0	25,793	21,273,100	0.00
Q5003											
Female	1,794	2,508	70,681,931	71,887,694,323	2.54	1,336	1,576	1,973	66,341,029	64,947,610,235	2.01
Male	577	770	68,202,809	67,053,569,594	0.85	446	524	619	63,739,268	60,374,206,454	0.70
Unknown	0	0	28,228	23,924,920	0.00	0	0	0	25,793	21,273,100	0.00
Q5004											
Female	945	1,795	70,681,931	71,887,694,323	1.34	741	915	1,525	66,341,035	64,947,655,695	1.12
Male	311	545	68,202,809	67,053,569,594	0.46	254	294	469	63,739,274	60,374,221,332	0.40
Unknown	0	0	28,228	23,924,920	0.00	0	0	0	25,793	21,273,100	0.00
All Current Codes (99304, 99305, 99306, 99307, 99308, 99309, 33910, 99315, 99316, 99318, 99379, 99380, 94004, Q5003, Q5004)											
Female	390,595	1,884,264	70,681,931	71,887,694,323	552.61	347,964	472,537	1,585,975	66,332,654	64,879,508,569	524.57
Male	209,222	763,112	68,202,809	67,053,569,594	306.76	187,144	238,362	661,306	63,735,615	60,345,571,030	293.63
Unknown	56	78	28,228	23,924,920	198.38	50	65	72	25,792	21,267,722	193.86
99301											
Female	12,615	14,384	70,681,931	71,887,694,323	17.85	6,335	7,079	7,437	66,341,016	64,947,082,518	9.55
Male	5,192	6,012	68,202,809	67,053,569,594	7.61	2,800	3,087	3,346	63,739,266	60,373,959,620	4.39
Unknown	0	0	28,228	23,924,920	0.00	0	0	0	25,793	21,273,100	0.00
99302											
Female	13,819	16,153	70,681,931	71,887,694,323	19.55	9,288	10,009	11,145	66,340,972	64,946,834,015	14.00
Male	6,664	7,942	68,202,809	67,053,569,594	9.77	4,620	4,960	5,565	63,739,247	60,373,798,487	7.25
Unknown	0	0	28,228	23,924,920	0.00	0	0	0	25,793	21,273,100	0.00

Table 3. Summary of Nursing Home Facility Care Codes between January 1, 2000 and December 31, 2012, by Setting, Code Group, and Sex

Group	Prevalent					Incident					
	Patients	Number of Claims	Eligible Members	Member-Days	Patients per 100K Eligible Members	New Patients	New Claims	Number of Total Claims	Eligible Members	Member-Days	New Patients per 100K Eligible Members
Non-Acute Institutionalized Care Setting (continued)											
99303											
Female	26,895	34,412	70,681,931	71,887,694,323	38.05	21,144	23,938	27,782	66,340,910	64,945,596,675	31.87
Male	14,683	19,460	68,202,809	67,053,569,594	21.53	11,825	13,450	16,050	63,739,188	60,373,059,004	18.55
Unknown	0	0	28,228	23,924,920	0.00	0	0	0	25,793	21,273,100	0.00
99311											
Female	46,924	85,886	70,681,931	71,887,694,323	66.39	28,159	35,377	60,142	66,340,762	64,943,948,272	42.45
Male	20,971	42,128	68,202,809	67,053,569,594	30.75	13,581	16,716	31,615	63,739,135	60,372,390,818	21.31
Unknown	2	2	28,228	23,924,920	7.09	1	1	1	25,793	21,273,010	3.88
99312											
Female	54,958	105,691	70,681,931	71,887,694,323	77.75	36,506	46,782	78,638	66,340,670	64,942,869,695	55.03
Male	25,196	47,686	68,202,809	67,053,569,594	36.94	17,718	22,117	36,409	63,739,073	60,372,018,740	27.80
Unknown	1	1	28,228	23,924,920	3.54	0	0	0	25,793	21,273,100	0.00
99313											
Female	32,020	53,259	70,681,931	71,887,694,323	45.30	21,692	26,110	39,426	66,340,857	64,945,175,523	32.70
Male	15,131	25,767	68,202,809	67,053,569,594	22.19	10,738	12,721	19,703	63,739,163	60,373,008,304	16.85
Unknown	0	0	28,228	23,924,920	0.00	0	0	0	25,793	21,273,100	0.00
G0066											
Female	0	0	70,681,931	71,887,694,323	0.00	0	0	0	66,341,041	64,947,747,778	0.00
Male	0	0	68,202,809	67,053,569,594	0.00	0	0	0	63,739,277	60,374,248,616	0.00
Unknown	0	0	28,228	23,924,920	0.00	0	0	0	25,793	21,273,100	0.00
All Past Codes (99301, 99302, 99303, 99311, 99312, 99313, G0066)											
Female	77,504	203,505	70,681,931	71,887,694,323	109.65	53,199	69,319	159,325	66,340,259	64,939,962,895	80.19
Male	37,773	100,930	68,202,809	67,053,569,594	55.38	27,431	34,840	80,989	63,738,831	60,370,388,856	43.04
Unknown	2	2	28,228	23,924,920	7.09	1	1	1	25,793	21,273,010	3.88

Table 4. Summary of Nursing Home Facility Care Codes between January 1, 2000 and December 31, 2012, by Setting, Code Group, and Year

Group	Prevalent					Incident					
	Patients	Number of Claims	Eligible Members	Member-Days	Patients per 100K Eligible Members	New Patients	New Claims	Number of Total Claims	Eligible Members	Member-Days	New Patients per 100K Eligible Members
Any Care Setting											
99304											
2000	183	183	9,230,566	2,904,433,573	1.98	32	32	32	8,688,933	2,090,642,616	0.37
2001	77	77	9,124,980	2,909,742,403	0.84	59	59	59	8,822,087	2,771,125,383	0.67
2002	115	115	9,197,577	2,929,790,254	1.25	79	79	79	8,922,371	2,792,983,664	0.89
2003	183	183	9,093,976	2,892,640,046	2.01	130	130	130	8,832,024	2,761,640,762	1.47
2004	291	291	9,843,525	3,104,147,591	2.96	195	195	195	9,524,754	2,903,742,195	2.05
2005	540	540	10,543,348	3,317,438,184	5.12	380	380	380	10,159,685	3,113,364,756	3.74
2006	8,671	10,500	24,633,249	7,485,308,402	35.20	6,943	7,099	8,214	22,960,695	6,096,508,337	30.24
2007	8,861	10,451	28,044,319	8,175,177,239	31.60	7,770	7,937	9,169	26,633,873	7,435,040,141	29.17
2008	22,090	25,703	71,613,506	21,590,749,336	30.85	18,539	18,976	21,267	67,241,701	17,303,992,310	27.57
2009	22,461	25,994	71,057,714	21,738,553,630	31.61	21,505	22,058	24,739	68,325,168	20,264,410,792	31.47
2010	32,478	37,315	70,020,236	21,456,581,735	46.38	31,060	31,890	35,599	67,286,086	20,005,972,675	46.16
2011	37,955	43,289	70,303,083	21,674,633,858	53.99	36,511	37,547	41,518	67,666,894	20,243,549,969	53.96
2012	35,405	40,399	68,375,451	18,785,992,586	51.78	34,055	34,849	38,755	65,682,599	17,546,342,696	51.85
99305											
2000	639	639	9,230,566	2,904,433,573	6.92	74	74	74	8,688,931	2,090,637,951	0.85
2001	191	191	9,124,980	2,909,742,403	2.09	126	126	126	8,822,084	2,771,119,254	1.43
2002	314	314	9,197,577	2,929,790,254	3.41	212	212	212	8,922,371	2,792,971,464	2.38
2003	463	463	9,093,976	2,892,640,046	5.09	316	316	316	8,832,020	2,761,622,552	3.58
2004	763	763	9,843,525	3,104,147,591	7.75	542	542	542	9,524,752	2,903,711,303	5.69
2005	1,457	1,457	10,543,348	3,317,438,184	13.82	1,082	1,082	1,082	10,159,678	3,113,303,723	10.65
2006	23,072	28,461	24,633,249	7,485,308,402	93.66	18,522	19,057	22,418	22,960,494	6,095,503,417	80.67
2007	28,877	35,267	28,044,319	8,175,177,239	102.97	25,722	26,583	31,569	26,633,366	7,433,418,988	96.58
2008	75,362	90,260	71,613,506	21,590,749,336	105.23	62,549	64,528	74,128	67,240,227	17,299,950,464	93.02
2009	81,579	98,249	71,057,714	21,738,553,630	114.81	78,403	81,508	94,252	68,324,085	20,259,212,016	114.75
2010	100,309	123,330	70,020,236	21,456,581,735	143.26	95,705	100,162	117,441	67,284,807	20,000,005,171	142.24
2011	109,175	133,768	70,303,083	21,674,633,858	155.29	104,363	109,002	127,659	67,665,262	20,237,137,814	154.23
2012	96,238	116,213	68,375,451	18,785,992,586	140.75	91,933	95,375	110,778	65,681,050	17,540,815,001	139.97

Table 4. Summary of Nursing Home Facility Care Codes between January 1, 2000 and December 31, 2012, by Setting, Code Group, and Year

Group	Prevalent					Incident					
	Patients	Number of Claims	Eligible Members	Member-Days	Patients per 100K Eligible Members	New Patients	New Claims	Number of Total Claims	Eligible Members	Member-Days	New Patients per 100K Eligible Members
Any Care Setting (continued)											
99306											
2000	342	342	9,230,566	2,904,433,573	3.71	61	61	61	8,688,933	2,090,640,064	0.70
2001	141	141	9,124,980	2,909,742,403	1.55	96	96	96	8,822,086	2,771,122,153	1.09
2002	195	195	9,197,577	2,929,790,254	2.12	140	140	140	8,922,369	2,792,978,119	1.57
2003	367	368	9,093,976	2,892,640,046	4.04	257	257	258	8,832,016	2,761,629,507	2.91
2004	648	651	9,843,525	3,104,147,591	6.58	471	471	474	9,524,754	2,903,717,810	4.95
2005	3,235	3,572	10,543,348	3,317,438,184	30.68	2,907	2,956	3,240	10,159,674	3,113,166,193	28.61
2006	37,558	48,723	24,633,249	7,485,308,402	152.47	30,870	32,103	39,140	22,960,209	6,094,381,126	134.45
2007	45,777	58,828	28,044,319	8,175,177,239	163.23	40,990	42,941	52,827	26,632,772	7,431,975,800	153.91
2008	139,387	177,413	71,613,506	21,590,749,336	194.64	114,837	119,911	143,915	67,238,033	17,294,918,952	170.79
2009	149,012	189,282	71,057,714	21,738,553,630	209.71	142,823	150,530	181,158	68,322,243	20,252,919,178	209.04
2010	156,774	202,051	70,020,236	21,456,581,735	223.90	149,420	157,675	192,385	67,283,196	19,994,731,497	222.08
2011	163,910	211,324	70,303,083	21,674,633,858	233.15	156,147	164,884	200,920	67,663,723	20,231,980,275	230.77
2012	142,042	179,113	68,375,451	18,785,992,586	207.74	135,179	141,243	170,075	65,679,408	17,536,447,319	205.82
99307											
2000	2,189	2,189	9,230,566	2,904,433,573	23.71	283	283	283	8,688,928	2,090,616,406	3.26
2001	867	867	9,124,980	2,909,742,403	9.50	553	553	553	8,822,081	2,771,078,386	6.27
2002	1,243	1,243	9,197,577	2,929,790,254	13.51	824	824	824	8,922,360	2,792,917,283	9.24
2003	2,060	2,062	9,093,976	2,892,640,046	22.65	1,398	1,398	1,400	8,831,999	2,761,523,567	15.83
2004	3,273	3,277	9,843,525	3,104,147,591	33.25	2,250	2,251	2,254	9,524,723	2,903,553,490	23.62
2005	8,029	9,755	10,543,348	3,317,438,184	76.15	6,359	6,689	8,062	10,159,601	3,112,801,812	62.59
2006	43,864	94,948	24,633,249	7,485,308,402	178.07	33,912	37,832	64,218	22,958,697	6,092,850,646	147.71
2007	47,711	104,589	28,044,319	8,175,177,239	170.13	39,037	43,879	76,850	26,630,399	7,430,479,191	146.59
2008	117,473	291,749	71,613,506	21,590,749,336	164.04	90,766	100,982	182,523	67,232,590	17,293,109,728	135.00
2009	117,673	294,555	71,057,714	21,738,553,630	165.60	104,464	118,203	226,580	68,317,428	20,251,660,708	152.91
2010	114,498	281,521	70,020,236	21,456,581,735	163.52	101,452	114,538	219,781	67,278,843	19,994,782,763	150.79
2011	114,672	278,463	70,303,083	21,674,633,858	163.11	101,972	114,646	218,694	67,660,008	20,232,889,350	150.71
2012	95,574	225,434	68,375,451	18,785,992,586	139.78	84,171	93,077	174,130	65,676,328	17,537,890,703	128.16

Table 4. Summary of Nursing Home Facility Care Codes between January 1, 2000 and December 31, 2012, by Setting, Code Group, and Year

Group	Prevalent					Incident					
	Patients	Number of Claims	Eligible Members	Member-Days	Patients per 100K Eligible Members	New Patients	New Claims	Number of Total Claims	Eligible Members	Member-Days	New Patients per 100K Eligible Members
Any Care Setting (continued)											
99308											
2000	2,479	2,479	9,230,566	2,904,433,573	26.86	333	333	333	8,688,928	2,090,611,575	3.83
2001	955	955	9,124,980	2,909,742,403	10.47	619	619	619	8,822,077	2,771,072,462	7.02
2002	1,372	1,372	9,197,577	2,929,790,254	14.92	922	922	922	8,922,357	2,792,906,474	10.33
2003	2,342	2,342	9,093,976	2,892,640,046	25.75	1,593	1,593	1,593	8,831,996	2,761,507,170	18.04
2004	3,790	3,791	9,843,525	3,104,147,591	38.50	2,627	2,627	2,628	9,524,719	2,903,519,808	27.58
2005	9,766	11,757	10,543,348	3,317,438,184	92.63	7,780	8,092	9,754	10,159,594	3,112,702,838	76.58
2006	67,607	192,574	24,633,249	7,485,308,402	274.45	52,234	58,728	128,370	22,956,289	6,089,901,842	227.54
2007	78,902	226,963	28,044,319	8,175,177,239	281.35	62,774	71,120	156,572	26,625,413	7,426,227,861	235.77
2008	208,261	680,456	71,613,506	21,590,749,336	290.81	156,025	173,833	393,912	67,218,646	17,281,590,423	232.12
2009	216,307	716,449	71,057,714	21,738,553,630	304.41	185,876	211,274	513,346	68,303,830	20,237,109,168	272.13
2010	216,717	709,911	70,020,236	21,456,581,735	309.51	185,011	209,408	506,777	67,264,840	19,980,161,346	275.05
2011	225,069	736,831	70,303,083	21,674,633,858	320.14	193,066	217,847	531,519	67,645,553	20,217,303,583	285.41
2012	202,055	648,389	68,375,451	18,785,992,586	295.51	170,942	189,121	459,190	65,661,711	17,523,272,328	260.34
99309											
2000	2,164	2,164	9,230,566	2,904,433,573	23.44	298	298	298	8,688,927	2,090,615,110	3.43
2001	822	822	9,124,980	2,909,742,403	9.01	538	538	538	8,822,079	2,771,079,996	6.10
2002	1,213	1,213	9,197,577	2,929,790,254	13.19	812	812	812	8,922,357	2,792,917,477	9.10
2003	2,029	2,030	9,093,976	2,892,640,046	22.31	1,374	1,374	1,375	8,831,998	2,761,526,243	15.56
2004	3,383	3,384	9,843,525	3,104,147,591	34.37	2,348	2,348	2,349	9,524,721	2,903,545,835	24.65
2005	7,134	7,363	10,543,348	3,317,438,184	67.66	5,366	5,407	5,590	10,159,607	3,112,940,558	52.82
2006	50,305	114,442	24,633,249	7,485,308,402	204.22	39,735	44,090	81,951	22,958,525	6,092,367,931	173.07
2007	61,221	153,924	28,044,319	8,175,177,239	218.30	50,259	56,538	112,859	26,628,790	7,428,935,753	188.74
2008	168,348	481,178	71,613,506	21,590,749,336	235.08	129,060	142,751	296,370	67,225,955	17,287,456,688	191.98
2009	179,994	524,430	71,057,714	21,738,553,630	253.31	157,457	177,286	392,605	68,310,238	20,243,552,462	230.50
2010	188,962	556,095	70,020,236	21,456,581,735	269.87	164,566	184,343	417,276	67,270,486	19,985,326,739	244.63
2011	201,529	603,471	70,303,083	21,674,633,858	286.66	175,978	197,199	455,599	67,650,498	20,221,795,874	260.13
2012	184,711	552,595	68,375,451	18,785,992,586	270.14	158,599	173,985	406,445	65,664,717	17,526,636,493	241.53

Table 4. Summary of Nursing Home Facility Care Codes between January 1, 2000 and December 31, 2012, by Setting, Code Group, and Year

Group	Prevalent					Incident					
	Patients	Number of Claims	Eligible Members	Member-Days	Patients per 100K Eligible Members	New Patients	New Claims	Number of Total Claims	Eligible Members	Member-Days	New Patients per 100K Eligible Members
Any Care Setting (continued)											
99310											
2000	766	766	9,230,566	2,904,433,573	8.30	108	108	108	8,688,932	2,090,635,507	1.24
2001	276	276	9,124,980	2,909,742,403	3.02	196	196	196	8,822,085	2,771,112,633	2.22
2002	405	406	9,197,577	2,929,790,254	4.40	260	260	261	8,922,366	2,792,966,182	2.91
2003	702	702	9,093,976	2,892,640,046	7.72	493	493	493	8,832,012	2,761,608,237	5.58
2004	1,115	1,115	9,843,525	3,104,147,591	11.33	781	781	781	9,524,739	2,903,688,539	8.20
2005	2,149	2,152	10,543,348	3,317,438,184	20.38	1,580	1,580	1,583	10,159,665	3,113,259,659	15.55
2006	14,666	22,716	24,633,249	7,485,308,402	59.54	11,579	12,223	16,946	22,960,407	6,096,001,022	50.43
2007	17,610	29,070	28,044,319	8,175,177,239	62.79	14,978	16,066	23,635	26,633,300	7,434,190,507	56.24
2008	52,272	97,954	71,613,506	21,590,749,336	72.99	42,154	44,988	69,971	67,239,529	17,301,142,709	62.69
2009	55,863	105,926	71,057,714	21,738,553,630	78.62	51,675	56,146	90,168	68,323,247	20,260,626,084	75.63
2010	56,892	105,707	70,020,236	21,456,581,735	81.25	52,303	56,376	90,717	67,284,172	20,003,006,704	77.73
2011	60,135	110,718	70,303,083	21,674,633,858	85.54	55,590	59,914	95,997	67,665,098	20,240,818,428	82.15
2012	51,693	92,790	68,375,451	18,785,992,586	75.60	47,666	50,378	80,016	65,680,492	17,544,348,976	72.57
99315											
2000	4,740	5,128	9,230,566	2,904,433,573	51.35	2,754	2,798	2,983	8,688,854	2,090,398,782	31.70
2001	4,047	4,429	9,124,980	2,909,742,403	44.35	3,829	3,951	4,200	8,822,012	2,770,801,383	43.40
2002	4,520	4,930	9,197,577	2,929,790,254	49.14	4,259	4,365	4,651	8,922,288	2,792,624,784	47.73
2003	5,081	5,517	9,093,976	2,892,640,046	55.87	4,742	4,862	5,152	8,831,949	2,761,251,926	53.69
2004	5,894	6,418	9,843,525	3,104,147,591	59.88	5,486	5,631	5,979	9,524,643	2,903,278,715	57.60
2005	5,805	6,251	10,543,348	3,317,438,184	55.06	5,580	5,723	6,020	10,159,626	3,112,909,655	54.92
2006	12,716	14,352	24,633,249	7,485,308,402	51.62	10,297	10,532	11,475	22,960,663	6,096,174,034	44.85
2007	14,406	16,182	28,044,319	8,175,177,239	51.37	12,954	13,250	14,599	26,633,838	7,434,610,781	48.64
2008	43,618	48,038	71,613,506	21,590,749,336	60.91	36,055	36,876	39,487	67,241,442	17,302,419,635	53.62
2009	44,513	49,023	71,057,714	21,738,553,630	62.64	43,236	44,444	47,564	68,325,099	20,262,455,464	63.28
2010	44,992	49,479	70,020,236	21,456,581,735	64.26	43,236	44,448	47,496	67,286,024	20,004,784,817	64.26
2011	46,220	50,487	70,303,083	21,674,633,858	65.74	44,538	45,661	48,547	67,666,932	20,242,765,434	65.82
2012	37,863	40,900	68,375,451	18,785,992,586	55.38	36,514	37,256	39,399	65,682,801	17,546,029,416	55.59

Table 4. Summary of Nursing Home Facility Care Codes between January 1, 2000 and December 31, 2012, by Setting, Code Group, and Year

Group	Prevalent					Incident					
	Patients	Number of Claims	Eligible Members	Member-Days	Patients per 100K Eligible Members	New Patients	New Claims	Number of Total Claims	Eligible Members	Member-Days	New Patients per 100K Eligible Members
Any Care Setting (continued)											
99316											
2000	2,082	2,253	9,230,566	2,904,433,573	22.56	1,315	1,347	1,431	8,688,895	2,090,534,347	15.13
2001	2,265	2,441	9,124,980	2,909,742,403	24.82	2,154	2,199	2,320	8,822,058	2,770,940,897	24.42
2002	3,074	3,296	9,197,577	2,929,790,254	33.42	2,943	3,023	3,158	8,922,334	2,792,741,159	32.98
2003	4,445	4,830	9,093,976	2,892,640,046	48.88	4,249	4,386	4,620	8,831,965	2,761,284,244	48.11
2004	6,322	7,012	9,843,525	3,104,147,591	64.22	6,008	6,226	6,666	9,524,671	2,903,223,821	63.08
2005	7,295	7,994	10,543,348	3,317,438,184	69.19	7,026	7,242	7,699	10,159,624	3,112,763,506	69.16
2006	13,488	15,026	24,633,249	7,485,308,402	54.76	11,880	12,204	13,152	22,960,661	6,096,029,979	51.74
2007	14,679	16,226	28,044,319	8,175,177,239	52.34	13,650	14,040	15,086	26,633,928	7,434,511,753	51.25
2008	38,347	42,290	71,613,506	21,590,749,336	53.55	32,256	33,013	35,143	67,241,585	17,302,726,870	47.97
2009	41,437	45,262	71,057,714	21,738,553,630	58.31	40,304	41,461	44,027	68,325,133	20,262,686,891	58.99
2010	44,238	48,455	70,020,236	21,456,581,735	63.18	42,680	43,851	46,624	67,285,998	20,004,800,881	63.43
2011	51,399	56,371	70,303,083	21,674,633,858	73.11	49,734	51,225	54,490	67,666,979	20,242,272,337	73.50
2012	46,237	50,379	68,375,451	18,785,992,586	67.62	44,491	45,663	48,440	65,682,490	17,545,248,361	67.74
99318											
2000	656	656	9,230,566	2,904,433,573	7.11	94	94	94	8,688,931	2,090,637,020	1.08
2001	227	227	9,124,980	2,909,742,403	2.49	168	168	168	8,822,085	2,771,115,134	1.90
2002	356	356	9,197,577	2,929,790,254	3.87	246	246	246	8,922,372	2,792,968,992	2.76
2003	552	552	9,093,976	2,892,640,046	6.07	375	375	375	8,832,015	2,761,617,253	4.25
2004	845	845	9,843,525	3,104,147,591	8.58	601	601	601	9,524,749	2,903,704,442	6.31
2005	1,579	1,593	10,543,348	3,317,438,184	14.98	1,249	1,253	1,263	10,159,678	3,113,289,108	12.29
2006	4,516	4,680	24,633,249	7,485,308,402	18.33	3,528	3,563	3,652	22,960,773	6,096,799,675	15.37
2007	4,827	4,898	28,044,319	8,175,177,239	17.21	4,190	4,216	4,255	26,634,084	7,435,375,886	15.73
2008	12,476	12,718	71,613,506	21,590,749,336	17.42	10,230	10,295	10,412	67,242,036	17,304,732,570	15.21
2009	12,895	13,113	71,057,714	21,738,553,630	18.15	12,301	12,389	12,515	68,325,497	20,265,249,361	18.00
2010	12,681	12,854	70,020,236	21,456,581,735	18.11	12,052	12,114	12,220	67,286,393	20,007,585,211	17.91
2011	12,352	12,529	70,303,083	21,674,633,858	17.57	11,803	11,878	11,970	67,667,388	20,245,701,831	17.44
2012	9,725	9,872	68,375,451	18,785,992,586	14.22	9,495	9,544	9,635	65,683,217	17,548,580,952	14.46

Table 4. Summary of Nursing Home Facility Care Codes between January 1, 2000 and December 31, 2012, by Setting, Code Group, and Year

Group	Prevalent					Incident					
	Patients	Number of Claims	Eligible Members	Member-Days	Patients per 100K Eligible Members	New Patients	New Claims	Number of Total Claims	Eligible Members	Member-Days	New Patients per 100K Eligible Members
Any Care Setting (continued)											
99379											
2000	18	19	9,230,566	2,904,433,573	0.20	2	2	2	8,688,933	2,090,645,232	0.02
2001	11	11	9,124,980	2,909,742,403	0.12	10	10	10	8,822,087	2,771,130,088	0.11
2002	7	8	9,197,577	2,929,790,254	0.08	7	7	8	8,922,373	2,792,989,875	0.08
2003	7	8	9,093,976	2,892,640,046	0.08	7	8	8	8,832,024	2,761,651,881	0.08
2004	15	16	9,843,525	3,104,147,591	0.15	14	14	14	9,524,758	2,903,759,665	0.15
2005	58	59	10,543,348	3,317,438,184	0.55	58	58	59	10,159,693	3,113,392,779	0.57
2006	71	84	24,633,249	7,485,308,402	0.29	65	66	78	22,960,816	6,097,112,325	0.28
2007	121	143	28,044,319	8,175,177,239	0.43	114	117	131	26,634,127	7,435,735,007	0.43
2008	185	225	71,613,506	21,590,749,336	0.26	170	171	204	67,242,211	17,305,628,616	0.25
2009	212	279	71,057,714	21,738,553,630	0.30	208	214	275	68,325,626	20,266,317,083	0.30
2010	169	201	70,020,236	21,456,581,735	0.24	157	160	184	67,286,532	20,008,624,482	0.23
2011	115	140	70,303,083	21,674,633,858	0.16	110	111	122	67,667,515	20,246,747,883	0.16
2012	84	95	68,375,451	18,785,992,586	0.12	79	79	90	65,683,381	17,549,439,670	0.12
99380											
2000	1	1	9,230,566	2,904,433,573	0.01	1	1	1	8,688,933	2,090,645,689	0.01
2001	5	5	9,124,980	2,909,742,403	0.05	5	5	5	8,822,087	2,771,130,558	0.06
2002	5	5	9,197,577	2,929,790,254	0.05	5	5	5	8,922,373	2,792,990,162	0.06
2003	10	11	9,093,976	2,892,640,046	0.11	9	9	10	8,832,024	2,761,651,817	0.10
2004	14	31	9,843,525	3,104,147,591	0.14	13	14	19	9,524,757	2,903,759,301	0.14
2005	38	48	10,543,348	3,317,438,184	0.36	35	36	37	10,159,692	3,113,393,910	0.34
2006	68	80	24,633,249	7,485,308,402	0.28	52	53	56	22,960,812	6,097,113,956	0.23
2007	107	111	28,044,319	8,175,177,239	0.38	98	98	102	26,634,126	7,435,735,632	0.37
2008	157	166	71,613,506	21,590,749,336	0.22	127	128	130	67,242,207	17,305,633,648	0.19
2009	131	142	71,057,714	21,738,553,630	0.18	126	126	134	68,325,627	20,266,325,566	0.18
2010	111	126	70,020,236	21,456,581,735	0.16	99	101	114	67,286,531	20,008,630,115	0.15
2011	86	150	70,303,083	21,674,633,858	0.12	82	82	146	67,667,516	20,246,751,552	0.12
2012	59	64	68,375,451	18,785,992,586	0.09	55	55	60	65,683,381	17,549,442,154	0.08

Table 4. Summary of Nursing Home Facility Care Codes between January 1, 2000 and December 31, 2012, by Setting, Code Group, and Year

Group	Prevalent					Incident					
	Patients	Number of Claims	Eligible Members	Member-Days	Patients per 100K Eligible Members	New Patients	New Claims	Number of Total Claims	Eligible Members	Member-Days	New Patients per 100K Eligible Members
Any Care Setting (continued)											
94004											
2000	0	0	9,230,566	2,904,433,573	0.00	0	0	0	8,688,933	2,090,645,779	0.00
2001	1	1	9,124,980	2,909,742,403	0.01	1	1	1	8,822,087	2,771,130,858	0.01
2002	0	0	9,197,577	2,929,790,254	0.00	0	0	0	8,922,373	2,792,990,505	0.00
2003	0	0	9,093,976	2,892,640,046	0.00	0	0	0	8,832,024	2,761,652,616	0.00
2004	0	0	9,843,525	3,104,147,591	0.00	0	0	0	9,524,758	2,903,760,754	0.00
2005	1	1	10,543,348	3,317,438,184	0.01	1	1	1	10,159,693	3,113,397,383	0.01
2006	2	2	24,633,249	7,485,308,402	0.01	1	1	1	22,960,817	6,097,117,671	0.00
2007	72	403	28,044,319	8,175,177,239	0.26	61	69	315	26,634,121	7,435,738,066	0.23
2008	251	1,265	71,613,506	21,590,749,336	0.35	176	187	430	67,242,181	17,305,621,710	0.26
2009	202	2,269	71,057,714	21,738,553,630	0.28	164	179	1,762	68,325,598	20,266,309,740	0.24
2010	192	2,500	70,020,236	21,456,581,735	0.27	151	159	1,305	67,286,506	20,008,616,587	0.22
2011	247	3,622	70,303,083	21,674,633,858	0.35	201	216	2,043	67,667,482	20,246,728,084	0.30
2012	277	1,881	68,375,451	18,785,992,586	0.41	215	237	648	65,683,344	17,549,416,996	0.33
Q5003											
2000	54	54	9,230,566	2,904,433,573	0.59	4	4	4	8,688,933	2,090,645,413	0.05
2001	27	27	9,124,980	2,909,742,403	0.30	18	18	18	8,822,087	2,771,129,367	0.20
2002	32	32	9,197,577	2,929,790,254	0.35	21	21	21	8,922,372	2,792,988,617	0.24
2003	64	64	9,093,976	2,892,640,046	0.70	38	38	38	8,832,024	2,761,648,941	0.43
2004	89	89	9,843,525	3,104,147,591	0.90	56	56	56	9,524,756	2,903,755,427	0.59
2005	122	122	10,543,348	3,317,438,184	1.16	66	66	66	10,159,692	3,113,391,167	0.65
2006	257	271	24,633,249	7,485,308,402	1.04	168	168	182	22,960,813	6,097,103,634	0.73
2007	1,980	5,094	28,044,319	8,175,177,239	7.06	1,767	2,130	4,769	26,634,066	7,435,551,838	6.63
2008	2,733	10,243	71,613,506	21,590,749,336	3.82	1,966	2,013	6,304	67,241,706	17,305,359,664	2.92
2009	2,992	12,183	71,057,714	21,738,553,630	4.21	2,060	2,108	6,411	68,324,953	20,266,017,912	3.02
2010	1,759	5,407	70,020,236	21,456,581,735	2.51	900	932	2,787	67,286,160	20,008,470,428	1.34
2011	944	3,645	70,303,083	21,674,633,858	1.34	612	617	1,925	67,667,286	20,246,665,475	0.90
2012	822	3,319	68,375,451	18,785,992,586	1.20	541	545	1,806	65,683,180	17,549,360,749	0.82

Table 4. Summary of Nursing Home Facility Care Codes between January 1, 2000 and December 31, 2012, by Setting, Code Group, and Year

Group	Prevalent					Incident					
	Patients	Number of Claims	Eligible Members	Member-Days	Patients per 100K Eligible Members	New Patients	New Claims	Number of Total Claims	Eligible Members	Member-Days	New Patients per 100K Eligible Members
Any Care Setting (continued)											
Q5004											
2000	20	20	9,230,566	2,904,433,573	0.22	3	3	3	8,688,933	2,090,645,368	0.03
2001	11	11	9,124,980	2,909,742,403	0.12	6	6	6	8,822,087	2,771,130,342	0.07
2002	17	17	9,197,577	2,929,790,254	0.18	11	11	11	8,922,373	2,792,989,712	0.12
2003	36	36	9,093,976	2,892,640,046	0.40	21	21	21	8,832,021	2,761,650,510	0.24
2004	48	48	9,843,525	3,104,147,591	0.49	25	25	25	9,524,755	2,903,758,101	0.26
2005	89	89	10,543,348	3,317,438,184	0.84	62	62	62	10,159,693	3,113,392,047	0.61
2006	166	166	24,633,249	7,485,308,402	0.67	116	116	116	22,960,813	6,097,108,003	0.51
2007	1,687	4,323	28,044,319	8,175,177,239	6.02	1,544	1,721	4,080	26,634,082	7,435,599,411	5.80
2008	1,686	5,617	71,613,506	21,590,749,336	2.35	1,149	1,167	3,085	67,241,877	17,305,475,086	1.71
2009	1,163	4,136	71,057,714	21,738,553,630	1.64	846	864	2,434	68,325,413	20,266,230,886	1.24
2010	514	1,527	70,020,236	21,456,581,735	0.73	306	313	976	67,286,435	20,008,598,383	0.45
2011	206	648	70,303,083	21,674,633,858	0.29	169	173	455	67,667,489	20,246,740,562	0.25
2012	174	693	68,375,451	18,785,992,586	0.25	131	132	438	65,683,355	17,549,431,817	0.20
All Current Codes (99304, 99305, 99306, 99307, 99308, 99309, 33910, 99315, 99316, 99318, 99379, 99380, 94004, Q5003, Q5004)											
2000	9,438	10,127	9,230,566	2,904,433,573	102.25	4,311	4,410	4,741	8,688,807	2,090,255,660	49.62
2001	7,178	7,898	9,124,980	2,909,742,403	78.66	6,471	6,698	7,159	8,821,970	2,770,554,374	73.35
2002	8,868	9,718	9,197,577	2,929,790,254	96.42	7,953	8,211	8,772	8,922,231	2,792,293,003	89.14
2003	11,779	12,899	9,093,976	2,892,640,046	129.53	10,400	10,725	11,461	8,831,858	2,760,738,574	117.76
2004	16,054	17,801	9,843,525	3,104,147,591	163.09	14,015	14,495	15,648	9,524,507	2,902,486,456	147.15
2005	23,396	32,352	10,543,348	3,317,438,184	221.90	20,525	21,380	29,278	10,159,416	3,111,438,984	202.03
2006	108,394	443,575	24,633,249	7,485,308,402	440.03	79,517	86,025	270,088	22,948,644	6,084,820,922	346.50
2007	130,221	552,860	28,044,319	8,175,177,239	464.34	95,232	103,630	314,742	26,610,922	7,419,300,183	357.87
2008	347,268	1,693,426	71,613,506	21,590,749,336	484.92	238,478	256,840	819,733	67,179,869	17,263,429,344	354.98
2009	362,078	1,786,490	71,057,714	21,738,553,630	509.55	286,944	312,845	1,062,898	68,266,009	20,215,317,430	420.33
2010	367,076	1,807,817	70,020,236	21,456,581,735	524.24	290,958	316,673	1,089,818	67,227,984	19,958,601,078	432.79
2011	382,673	1,896,044	70,303,083	21,674,633,858	544.32	306,052	332,871	1,169,025	67,609,070	20,194,753,148	452.68
2012	346,536	1,680,869	68,375,451	18,785,992,586	506.81	272,279	292,226	1,023,736	65,625,668	17,503,052,298	414.90

Table 4. Summary of Nursing Home Facility Care Codes between January 1, 2000 and December 31, 2012, by Setting, Code Group, and Year

Group	Prevalent					Incident					
	Patients	Number of Claims	Eligible Members	Member-Days	Patients per 100K Eligible Members	New Patients	New Claims	Number of Total Claims	Eligible Members	Member-Days	New Patients per 100K Eligible Members
Any Care Setting (continued)											
99301											
2000	11,042	11,779	9,230,566	2,904,433,573	119.62	3,041	3,125	3,375	8,688,830	2,090,354,961	35.00
2001	4,426	4,978	9,124,980	2,909,742,403	48.50	3,649	3,813	4,079	8,821,988	2,770,780,228	41.36
2002	4,210	4,620	9,197,577	2,929,790,254	45.77	3,551	3,698	3,926	8,922,304	2,792,655,101	39.80
2003	4,084	4,412	9,093,976	2,892,640,046	44.91	3,509	3,610	3,814	8,831,977	2,761,333,042	39.73
2004	4,264	4,623	9,843,525	3,104,147,591	43.32	3,732	3,835	4,056	9,524,667	2,903,407,213	39.18
2005	2,449	2,615	10,543,348	3,317,438,184	23.23	2,310	2,339	2,470	10,159,653	3,113,182,861	22.74
2006	60	62	24,633,249	7,485,308,402	0.24	44	44	46	22,960,787	6,097,094,959	0.19
2007	27	44	28,044,319	8,175,177,239	0.10	19	19	35	26,634,128	7,435,744,366	0.07
2008	71	107	71,613,506	21,590,749,336	0.10	50	50	84	67,242,210	17,305,640,021	0.07
2009	26	26	71,057,714	21,738,553,630	0.04	20	20	20	68,325,628	20,266,334,668	0.03
2010	20	21	70,020,236	21,456,581,735	0.03	17	17	18	67,286,534	20,008,637,998	0.03
2011	20	22	70,303,083	21,674,633,858	0.03	18	19	19	67,667,517	20,246,757,026	0.03
2012	19	19	68,375,451	18,785,992,586	0.03	15	15	15	65,683,381	17,549,445,936	0.02
99302											
2000	8,898	9,738	9,230,566	2,904,433,573	96.40	3,402	3,460	3,840	8,688,782	2,090,324,947	39.15
2001	5,028	5,774	9,124,980	2,909,742,403	55.10	4,293	4,405	4,960	8,821,968	2,770,740,742	48.66
2002	5,210	5,914	9,197,577	2,929,790,254	56.65	4,589	4,724	5,229	8,922,258	2,792,581,527	51.43
2003	5,394	6,237	9,093,976	2,892,640,046	59.31	4,699	4,843	5,395	8,831,913	2,761,223,502	53.20
2004	6,027	6,834	9,843,525	3,104,147,591	61.23	5,339	5,513	6,074	9,524,639	2,903,277,485	56.05
2005	6,662	7,643	10,543,348	3,317,438,184	63.19	6,095	6,275	6,971	10,159,558	3,112,848,359	59.99
2006	917	1,050	24,633,249	7,485,308,402	3.72	877	894	1,006	22,960,707	6,096,985,262	3.82
2007	111	116	28,044,319	8,175,177,239	0.40	104	104	109	26,634,116	7,435,732,713	0.39
2008	87	88	71,613,506	21,590,749,336	0.12	71	71	72	67,242,210	17,305,638,021	0.11
2009	37	37	71,057,714	21,738,553,630	0.05	35	35	35	68,325,628	20,266,333,871	0.05
2010	17	21	70,020,236	21,456,581,735	0.02	16	16	20	67,286,533	20,008,638,060	0.02
2011	19	20	70,303,083	21,674,633,858	0.03	17	18	18	67,667,517	20,246,756,900	0.03
2012	17	17	68,375,451	18,785,992,586	0.02	16	16	16	65,683,382	17,549,446,313	0.02

Table 4. Summary of Nursing Home Facility Care Codes between January 1, 2000 and December 31, 2012, by Setting, Code Group, and Year

Group	Prevalent					Incident					
	Patients	Number of Claims	Eligible Members	Member-Days	Patients per 100K Eligible Members	New Patients	New Claims	Number of Total Claims	Eligible Members	Member-Days	New Patients per 100K Eligible Members
Any Care Setting (continued)											
99303											
2000	14,730	17,062	9,230,566	2,904,433,573	159.58	7,406	7,623	8,838	8,688,625	2,089,967,675	85.24
2001	12,350	15,021	9,124,980	2,909,742,403	135.34	11,033	11,525	13,516	8,821,806	2,770,123,063	125.07
2002	13,576	16,572	9,197,577	2,929,790,254	147.60	12,296	12,848	15,118	8,922,017	2,791,877,900	137.82
2003	15,393	18,911	9,093,976	2,892,640,046	169.27	14,014	14,674	17,305	8,831,665	2,760,369,225	158.68
2004	19,064	23,554	9,843,525	3,104,147,591	193.67	17,027	17,803	21,013	9,524,267	2,902,180,099	178.77
2005	17,836	21,972	10,543,348	3,317,438,184	169.17	16,773	17,628	20,692	10,159,283	3,111,819,687	165.10
2006	128	142	24,633,249	7,485,308,402	0.52	68	68	72	22,960,519	6,096,927,937	0.30
2007	12	13	28,044,319	8,175,177,239	0.04	11	11	12	26,634,127	7,435,745,297	0.04
2008	90	94	71,613,506	21,590,749,336	0.13	72	72	76	67,242,211	17,305,638,357	0.11
2009	44	49	71,057,714	21,738,553,630	0.06	44	44	49	68,325,627	20,266,332,241	0.06
2010	29	30	70,020,236	21,456,581,735	0.04	27	27	28	67,286,533	20,008,637,373	0.04
2011	29	30	70,303,083	21,674,633,858	0.04	26	26	27	67,667,516	20,246,756,243	0.04
2012	22	23	68,375,451	18,785,992,586	0.03	21	21	22	65,683,382	17,549,445,566	0.03
99311											
2000	36,453	54,490	9,230,566	2,904,433,573	394.92	12,227	13,066	20,261	8,687,875	2,089,181,010	140.74
2001	19,134	39,050	9,124,980	2,909,742,403	209.69	15,557	17,270	31,364	8,821,155	2,769,166,724	176.36
2002	18,822	39,037	9,197,577	2,929,790,254	204.64	15,225	16,802	28,532	8,921,226	2,790,999,775	170.66
2003	19,286	39,020	9,093,976	2,892,640,046	212.07	15,719	17,449	28,970	8,830,987	2,759,678,713	178.00
2004	21,941	42,152	9,843,525	3,104,147,591	222.90	17,901	19,789	31,826	9,523,668	2,901,514,693	187.96
2005	18,916	36,000	10,543,348	3,317,438,184	179.41	16,328	18,168	30,259	10,158,839	3,111,351,372	160.73
2006	434	1,176	24,633,249	7,485,308,402	1.76	333	334	925	22,960,456	6,096,868,756	1.45
2007	8	18	28,044,319	8,175,177,239	0.03	6	6	15	26,634,127	7,435,745,529	0.02
2008	35	38	71,613,506	21,590,749,336	0.05	24	24	27	67,242,212	17,305,642,523	0.04
2009	1,429	1,441	71,057,714	21,738,553,630	2.01	1,386	1,386	1,398	68,325,606	20,266,279,233	2.03
2010	597	609	70,020,236	21,456,581,735	0.85	529	531	539	67,286,517	20,008,540,317	0.79
2011	5	5	70,303,083	21,674,633,858	0.01	3	3	3	67,667,515	20,246,758,148	0.00
2012	7	7	68,375,451	18,785,992,586	0.01	7	7	7	65,683,382	17,549,446,882	0.01

Table 4. Summary of Nursing Home Facility Care Codes between January 1, 2000 and December 31, 2012, by Setting, Code Group, and Year

Group	Prevalent					Incident					
	Patients	Number of Claims	Eligible Members	Member-Days	Patients per 100K Eligible Members	New Patients	New Claims	Number of Total Claims	Eligible Members	Member-Days	New Patients per 100K Eligible Members
Any Care Setting (continued)											
99312											
2000	37,179	67,109	9,230,566	2,904,433,573	402.78	12,879	13,710	22,574	8,686,848	2,088,852,481	148.26
2001	22,122	52,862	9,124,980	2,909,742,403	242.43	17,423	19,233	35,078	8,820,233	2,768,687,109	197.53
2002	23,036	58,033	9,197,577	2,929,790,254	250.46	18,374	20,433	39,024	8,920,347	2,790,406,744	205.98
2003	25,249	62,700	9,093,976	2,892,640,046	277.65	20,197	22,378	42,339	8,829,688	2,758,847,094	228.74
2004	30,219	76,170	9,843,525	3,104,147,591	306.99	24,284	26,729	52,530	9,522,035	2,900,402,357	255.03
2005	29,348	78,895	10,543,348	3,317,438,184	278.36	24,346	27,009	55,764	10,156,839	3,109,841,707	239.70
2006	483	960	24,633,249	7,485,308,402	1.96	341	343	683	22,960,118	6,096,643,564	1.49
2007	35	37	28,044,319	8,175,177,239	0.12	30	31	31	26,634,127	7,435,742,537	0.11
2008	139	150	71,613,506	21,590,749,336	0.19	95	96	99	67,242,209	17,305,635,376	0.14
2009	61	63	71,057,714	21,738,553,630	0.09	60	60	62	68,325,625	20,266,331,570	0.09
2010	35	35	70,020,236	21,456,581,735	0.05	33	33	33	67,286,533	20,008,636,422	0.05
2011	34	39	70,303,083	21,674,633,858	0.05	31	32	36	67,667,517	20,246,755,699	0.05
2012	32	32	68,375,451	18,785,992,586	0.05	31	31	31	65,683,382	17,549,444,682	0.05
99313											
2000	17,883	21,308	9,230,566	2,904,433,573	193.74	5,875	6,105	7,487	8,688,614	2,090,057,789	67.62
2001	10,565	15,530	9,124,980	2,909,742,403	115.78	8,844	9,528	13,323	8,821,791	2,770,212,104	100.25
2002	12,492	20,333	9,197,577	2,929,790,254	135.82	10,549	11,456	17,085	8,921,968	2,791,895,066	118.24
2003	15,714	27,900	9,093,976	2,892,640,046	172.80	13,359	14,577	23,475	8,831,428	2,760,195,646	151.27
2004	20,443	39,843	9,843,525	3,104,147,591	207.68	17,246	18,791	32,645	9,523,790	2,901,840,452	181.08
2005	19,657	38,226	10,543,348	3,317,438,184	186.44	17,486	19,203	32,805	10,158,768	3,111,326,642	172.13
2006	218	256	24,633,249	7,485,308,402	0.88	131	132	148	22,960,409	6,096,878,177	0.57
2007	28	39	28,044,319	8,175,177,239	0.10	23	23	34	26,634,127	7,435,743,454	0.09
2008	113	120	71,613,506	21,590,749,336	0.16	69	69	76	67,242,209	17,305,637,046	0.10
2009	64	85	71,057,714	21,738,553,630	0.09	63	63	84	68,325,627	20,266,330,640	0.09
2010	45	47	70,020,236	21,456,581,735	0.06	43	43	45	67,286,532	20,008,635,688	0.06
2011	53	54	70,303,083	21,674,633,858	0.08	51	51	52	67,667,517	20,246,753,957	0.08
2012	25	25	68,375,451	18,785,992,586	0.04	24	24	24	65,683,382	17,549,445,302	0.04

Table 4. Summary of Nursing Home Facility Care Codes between January 1, 2000 and December 31, 2012, by Setting, Code Group, and Year

Group	Prevalent					Incident					
	Patients	Number of Claims	Eligible Members	Member-Days	Patients per 100K Eligible Members	New Patients	New Claims	Number of Total Claims	Eligible Members	Member-Days	New Patients per 100K Eligible Members
Any Care Setting (continued)											
G0066											
2000	0	0	9,230,566	2,904,433,573	0.00	0	0	0	8,688,933	2,090,645,779	0.00
2001	0	0	9,124,980	2,909,742,403	0.00	0	0	0	8,822,087	2,771,130,948	0.00
2002	0	0	9,197,577	2,929,790,254	0.00	0	0	0	8,922,373	2,792,990,505	0.00
2003	0	0	9,093,976	2,892,640,046	0.00	0	0	0	8,832,024	2,761,652,616	0.00
2004	0	0	9,843,525	3,104,147,591	0.00	0	0	0	9,524,758	2,903,760,754	0.00
2005	0	0	10,543,348	3,317,438,184	0.00	0	0	0	10,159,693	3,113,397,473	0.00
2006	0	0	24,633,249	7,485,308,402	0.00	0	0	0	22,960,817	6,097,117,750	0.00
2007	0	0	28,044,319	8,175,177,239	0.00	0	0	0	26,634,128	7,435,746,220	0.00
2008	0	0	71,613,506	21,590,749,336	0.00	0	0	0	67,242,212	17,305,644,728	0.00
2009	0	0	71,057,714	21,738,553,630	0.00	0	0	0	68,325,628	20,266,336,922	0.00
2010	0	0	70,020,236	21,456,581,735	0.00	0	0	0	67,286,534	20,008,639,635	0.00
2011	0	0	70,303,083	21,674,633,858	0.00	0	0	0	67,667,517	20,246,758,670	0.00
2012	0	0	68,375,451	18,785,992,586	0.00	0	0	0	65,683,382	17,549,447,494	0.00
All Past Codes (99301, 99302, 99303, 99311, 99312, 99313, G0066)											
2000	53,063	116,465	9,230,566	2,904,433,573	574.86	19,275	20,333	40,554	8,684,913	2,087,827,213	221.94
2001	33,325	103,504	9,124,980	2,909,742,403	365.21	25,521	27,784	65,779	8,818,265	2,767,270,864	289.41
2002	34,900	113,303	9,197,577	2,929,790,254	379.45	26,686	29,096	68,885	8,917,900	2,788,869,211	299.24
2003	38,428	124,966	9,093,976	2,892,640,046	422.57	29,838	32,445	78,833	8,827,399	2,757,211,074	338.02
2004	45,498	154,317	9,843,525	3,104,147,591	462.21	35,022	37,938	97,360	9,519,236	2,898,514,315	367.91
2005	43,904	152,820	10,543,348	3,317,438,184	416.41	34,839	37,764	99,127	10,154,156	3,108,042,718	343.10
2006	1,784	3,528	24,633,249	7,485,308,402	7.24	1,380	1,404	2,691	22,959,683	6,096,263,022	6.01
2007	218	265	28,044,319	8,175,177,239	0.78	192	193	236	26,634,113	7,435,723,032	0.72
2008	519	588	71,613,506	21,590,749,336	0.72	369	370	428	67,242,201	17,305,608,691	0.55
2009	1,658	1,699	71,057,714	21,738,553,630	2.33	1,605	1,605	1,646	68,325,602	20,266,257,946	2.35
2010	742	762	70,020,236	21,456,581,735	1.06	664	666	682	67,286,512	20,008,527,773	0.99
2011	158	170	70,303,083	21,674,633,858	0.22	144	147	155	67,667,514	20,246,744,709	0.21
2012	121	122	68,375,451	18,785,992,586	0.18	113	113	114	65,683,381	17,549,437,341	0.17

Table 4. Summary of Nursing Home Facility Care Codes between January 1, 2000 and December 31, 2012, by Setting, Code Group, and Year

Group	Prevalent					Incident					
	Patients	Number of Claims	Eligible Members	Member-Days	Patients per 100K Eligible Members	New Patients	New Claims	Number of Total Claims	Eligible Members	Member-Days	New Patients per 100K Eligible Members
Non-Acute Institutionalized Care Setting											
99304											
2000	162	162	9,230,566	2,904,433,573	1.76	20	20	20	8,688,933	2,090,643,890	0.23
2001	55	55	9,124,980	2,909,742,403	0.60	41	41	41	8,822,087	2,771,127,036	0.46
2002	90	90	9,197,577	2,929,790,254	0.98	62	62	62	8,922,371	2,792,985,265	0.69
2003	136	136	9,093,976	2,892,640,046	1.50	88	88	88	8,832,024	2,761,644,241	1.00
2004	212	212	9,843,525	3,104,147,591	2.15	133	133	133	9,524,755	2,903,747,779	1.40
2005	370	370	10,543,348	3,317,438,184	3.51	233	233	233	10,159,685	3,113,376,600	2.29
2006	4,118	4,620	24,633,249	7,485,308,402	16.72	3,026	3,071	3,339	22,960,756	6,096,839,767	13.18
2007	3,264	3,587	28,044,319	8,175,177,239	11.64	2,968	3,023	3,216	26,634,061	7,435,476,937	11.14
2008	5,131	5,539	71,613,506	21,590,749,336	7.16	4,332	4,417	4,625	67,242,108	17,305,259,556	6.44
2009	5,550	5,933	71,057,714	21,738,553,630	7.81	5,173	5,257	5,525	68,325,538	20,265,886,935	7.57
2010	9,099	9,676	70,020,236	21,456,581,735	12.99	8,592	8,721	9,115	67,286,419	20,007,925,115	12.77
2011	11,238	11,918	70,303,083	21,674,633,858	15.99	10,676	10,837	11,294	67,667,326	20,245,838,721	15.78
2012	10,118	10,729	68,375,451	18,785,992,586	14.80	9,737	9,875	10,305	65,683,173	17,548,562,119	14.82
99305											
2000	600	600	9,230,566	2,904,433,573	6.50	51	51	51	8,688,932	2,090,640,252	0.59
2001	150	150	9,124,980	2,909,742,403	1.64	93	93	93	8,822,084	2,771,122,012	1.05
2002	227	227	9,197,577	2,929,790,254	2.47	151	151	151	8,922,371	2,792,976,675	1.69
2003	354	354	9,093,976	2,892,640,046	3.89	223	223	223	8,832,021	2,761,631,351	2.52
2004	580	580	9,843,525	3,104,147,591	5.89	384	384	384	9,524,753	2,903,724,728	4.03
2005	975	975	10,543,348	3,317,438,184	9.25	658	658	658	10,159,679	3,113,337,602	6.48
2006	11,947	13,308	24,633,249	7,485,308,402	48.50	9,014	9,203	9,958	22,960,634	6,096,319,989	39.26
2007	10,717	11,773	28,044,319	8,175,177,239	38.21	9,870	10,142	10,840	26,633,922	7,434,872,517	37.06
2008	19,411	21,282	71,613,506	21,590,749,336	27.11	16,239	16,613	17,808	67,241,788	17,304,191,959	24.15
2009	20,215	22,314	71,057,714	21,738,553,630	28.45	19,243	19,690	21,257	68,325,302	20,264,643,042	28.16
2010	28,066	31,255	70,020,236	21,456,581,735	40.08	26,655	27,372	29,620	67,286,110	20,006,331,970	39.61
2011	31,103	34,652	70,303,083	21,674,633,858	44.24	29,434	30,187	32,786	67,666,919	20,244,125,192	43.50
2012	26,379	29,080	68,375,451	18,785,992,586	38.58	25,238	25,876	27,830	65,682,823	17,547,137,024	38.42

Table 4. Summary of Nursing Home Facility Care Codes between January 1, 2000 and December 31, 2012, by Setting, Code Group, and Year

Group	Prevalent					Incident					
	Patients	Number of Claims	Eligible Members	Member-Days	Patients per 100K Eligible Members	New Patients	New Claims	Number of Total Claims	Eligible Members	Member-Days	New Patients per 100K Eligible Members
Non-Acute Institutionalized Care Setting (continued)											
99306											
2000	309	309	9,230,566	2,904,433,573	3.35	37	37	37	8,688,933	2,090,642,139	0.43
2001	109	109	9,124,980	2,909,742,403	1.19	69	69	69	8,822,086	2,771,124,557	0.78
2002	142	142	9,197,577	2,929,790,254	1.54	95	95	95	8,922,369	2,792,981,666	1.06
2003	255	255	9,093,976	2,892,640,046	2.80	159	159	159	8,832,017	2,761,638,016	1.80
2004	426	426	9,843,525	3,104,147,591	4.33	277	277	277	9,524,754	2,903,733,957	2.91
2005	1,187	1,231	10,543,348	3,317,438,184	11.26	933	942	977	10,159,681	3,113,321,916	9.18
2006	17,685	20,187	24,633,249	7,485,308,402	71.79	13,812	14,163	15,672	22,960,541	6,095,917,225	60.16
2007	16,819	18,898	28,044,319	8,175,177,239	59.97	15,809	16,388	17,776	26,633,789	7,434,361,290	59.36
2008	36,395	41,147	71,613,506	21,590,749,336	50.82	30,399	31,251	34,176	67,241,283	17,302,917,759	45.21
2009	37,873	42,850	71,057,714	21,738,553,630	53.30	36,358	37,471	41,114	68,324,867	20,263,070,951	53.21
2010	42,567	48,581	70,020,236	21,456,581,735	60.79	40,669	41,955	46,425	67,285,757	20,005,052,876	60.44
2011	44,998	51,386	70,303,083	21,674,633,858	64.01	42,759	44,158	48,794	67,666,529	20,242,891,551	63.19
2012	38,329	43,047	68,375,451	18,785,992,586	56.06	36,764	37,833	41,306	65,682,503	17,546,056,624	55.97
99307											
2000	2,014	2,014	9,230,566	2,904,433,573	21.82	191	191	191	8,688,930	2,090,625,367	2.20
2001	660	660	9,124,980	2,909,742,403	7.23	388	388	388	8,822,082	2,771,093,383	4.40
2002	939	939	9,197,577	2,929,790,254	10.21	597	597	597	8,922,363	2,792,936,301	6.69
2003	1,553	1,553	9,093,976	2,892,640,046	17.08	971	971	971	8,832,003	2,761,561,500	10.99
2004	2,380	2,380	9,843,525	3,104,147,591	24.18	1,504	1,504	1,504	9,524,728	2,903,618,218	15.79
2005	4,712	5,349	10,543,348	3,317,438,184	44.69	3,316	3,438	3,950	10,159,628	3,113,088,537	32.64
2006	27,716	61,865	24,633,249	7,485,308,402	112.51	19,612	21,545	35,370	22,959,034	6,094,465,514	85.42
2007	24,774	58,510	28,044,319	8,175,177,239	88.34	20,315	23,413	43,289	26,632,278	7,432,728,066	76.28
2008	40,497	76,318	71,613,506	21,590,749,336	56.55	31,379	34,674	55,384	67,239,918	17,301,592,801	46.67
2009	40,079	75,403	71,057,714	21,738,553,630	56.40	35,702	39,182	60,636	68,323,573	20,261,936,650	52.25
2010	42,196	78,993	70,020,236	21,456,581,735	60.26	37,591	41,264	63,236	67,284,392	20,004,117,603	55.87
2011	42,761	77,597	70,303,083	21,674,633,858	60.82	37,868	41,223	62,135	67,665,427	20,242,197,970	55.96
2012	33,917	63,014	68,375,451	18,785,992,586	49.60	30,574	33,411	52,135	65,681,749	17,545,649,841	46.55

Table 4. Summary of Nursing Home Facility Care Codes between January 1, 2000 and December 31, 2012, by Setting, Code Group, and Year

Group	Prevalent					Incident					
	Patients	Number of Claims	Eligible Members	Member-Days	Patients per 100K Eligible Members	New Patients	New Claims	Number of Total Claims	Eligible Members	Member-Days	New Patients per 100K Eligible Members
Non-Acute Institutionalized Care Setting (continued)											
99308											
2000	2,283	2,283	9,230,566	2,904,433,573	24.73	223	223	223	8,688,930	2,090,621,920	2.57
2001	741	741	9,124,980	2,909,742,403	8.12	447	447	447	8,822,078	2,771,087,957	5.07
2002	1,023	1,023	9,197,577	2,929,790,254	11.12	661	661	661	8,922,362	2,792,929,064	7.41
2003	1,780	1,780	9,093,976	2,892,640,046	19.57	1,118	1,118	1,118	8,831,999	2,761,548,671	12.66
2004	2,803	2,804	9,843,525	3,104,147,591	28.48	1,803	1,803	1,804	9,524,721	2,903,591,475	18.93
2005	5,812	6,889	10,543,348	3,317,438,184	55.12	4,162	4,327	5,229	10,159,621	3,113,009,329	40.97
2006	42,050	118,280	24,633,249	7,485,308,402	170.70	29,695	32,816	63,459	22,957,049	6,092,757,121	129.35
2007	39,911	123,395	28,044,319	8,175,177,239	142.31	32,320	37,392	87,112	26,629,983	7,430,384,167	121.37
2008	75,766	172,248	71,613,506	21,590,749,336	105.80	57,521	63,555	119,829	67,236,701	17,297,711,896	85.55
2009	76,840	180,030	71,057,714	21,738,553,630	108.14	67,869	74,880	137,966	68,320,333	20,257,323,756	99.34
2010	83,257	196,262	70,020,236	21,456,581,735	118.90	73,082	80,328	146,881	67,280,758	19,999,107,017	108.62
2011	88,237	204,787	70,303,083	21,674,633,858	125.51	77,090	84,465	153,282	67,661,398	20,236,696,404	113.93
2012	75,216	176,888	68,375,451	18,785,992,586	110.00	66,746	73,101	137,577	65,678,346	17,540,502,715	101.63
99309											
2000	1,988	1,988	9,230,566	2,904,433,573	21.54	202	202	202	8,688,929	2,090,624,586	2.32
2001	625	625	9,124,980	2,909,742,403	6.85	379	379	379	8,822,080	2,771,094,138	4.30
2002	892	892	9,197,577	2,929,790,254	9.70	576	576	576	8,922,361	2,792,937,571	6.46
2003	1,542	1,542	9,093,976	2,892,640,046	16.96	965	965	965	8,832,001	2,761,562,381	10.93
2004	2,481	2,481	9,843,525	3,104,147,591	25.20	1,597	1,597	1,597	9,524,724	2,903,611,398	16.77
2005	4,435	4,460	10,543,348	3,317,438,184	42.06	2,977	2,983	3,001	10,159,632	3,113,131,000	29.30
2006	30,630	69,090	24,633,249	7,485,308,402	124.34	22,246	24,176	42,552	22,959,021	6,094,333,413	96.89
2007	30,413	79,171	28,044,319	8,175,177,239	108.45	25,310	28,879	59,625	26,631,798	7,432,095,863	95.04
2008	61,211	125,619	71,613,506	21,590,749,336	85.47	46,925	51,403	89,354	67,238,300	17,299,608,129	69.79
2009	64,200	135,113	71,057,714	21,738,553,630	90.35	57,307	62,833	106,836	68,321,815	20,259,154,090	83.88
2010	71,926	151,059	70,020,236	21,456,581,735	102.72	63,993	69,796	118,753	67,282,339	20,000,832,803	95.11
2011	77,979	164,093	70,303,083	21,674,633,858	110.92	69,216	75,716	129,041	67,662,961	20,238,269,957	102.30
2012	68,209	148,593	68,375,451	18,785,992,586	99.76	60,897	66,342	118,200	65,679,016	17,541,591,900	92.72

Table 4. Summary of Nursing Home Facility Care Codes between January 1, 2000 and December 31, 2012, by Setting, Code Group, and Year

Group	Prevalent					Incident					
	Patients	Number of Claims	Eligible Members	Member-Days	Patients per 100K Eligible Members	New Patients	New Claims	Number of Total Claims	Eligible Members	Member-Days	New Patients per 100K Eligible Members
Non-Acute Institutionalized Care Setting (continued)											
99310											
2000	695	695	9,230,566	2,904,433,573	7.53	67	67	67	8,688,932	2,090,639,431	0.77
2001	200	200	9,124,980	2,909,742,403	2.19	134	134	134	8,822,086	2,771,118,075	1.52
2002	308	309	9,197,577	2,929,790,254	3.35	193	193	194	8,922,367	2,792,971,896	2.16
2003	532	532	9,093,976	2,892,640,046	5.85	353	353	353	8,832,015	2,761,620,807	4.00
2004	825	825	9,843,525	3,104,147,591	8.38	541	541	541	9,524,740	2,903,709,290	5.68
2005	1,417	1,420	10,543,348	3,317,438,184	13.44	944	944	947	10,159,676	3,113,311,839	9.29
2006	8,464	13,525	24,633,249	7,485,308,402	34.36	6,149	6,460	9,195	22,960,532	6,096,488,511	26.78
2007	8,084	14,020	28,044,319	8,175,177,239	28.83	6,966	7,572	11,734	26,633,795	7,434,982,685	26.15
2008	16,901	24,487	71,613,506	21,590,749,336	23.60	13,511	14,287	19,070	67,241,550	17,304,276,541	20.09
2009	17,901	25,853	71,057,714	21,738,553,630	25.19	16,562	17,452	22,812	68,325,100	20,264,683,051	24.24
2010	18,540	26,042	70,020,236	21,456,581,735	26.48	17,033	17,809	22,831	67,285,929	20,006,978,262	25.31
2011	19,857	27,801	70,303,083	21,674,633,858	28.24	18,279	19,158	24,459	67,666,910	20,244,972,047	27.01
2012	15,667	21,867	68,375,451	18,785,992,586	22.91	14,620	15,235	19,589	65,682,808	17,547,977,909	22.26
99315											
2000	2,791	2,961	9,230,566	2,904,433,573	30.24	1,340	1,358	1,445	8,688,891	2,090,525,877	15.42
2001	1,895	1,998	9,124,980	2,909,742,403	20.77	1,747	1,781	1,848	8,822,047	2,770,981,490	19.80
2002	2,155	2,292	9,197,577	2,929,790,254	23.43	1,989	2,028	2,118	8,922,329	2,792,823,728	22.29
2003	2,445	2,568	9,093,976	2,892,640,046	26.89	2,238	2,282	2,358	8,831,991	2,761,467,500	25.34
2004	2,717	2,845	9,843,525	3,104,147,591	27.60	2,543	2,588	2,667	9,524,711	2,903,549,914	26.70
2005	2,745	2,893	10,543,348	3,317,438,184	26.04	2,609	2,662	2,754	10,159,661	3,113,171,327	25.68
2006	6,553	6,930	24,633,249	7,485,308,402	26.60	5,005	5,076	5,250	22,960,747	6,096,661,817	21.80
2007	5,509	5,787	28,044,319	8,175,177,239	19.64	5,254	5,350	5,523	26,634,051	7,435,290,459	19.73
2008	10,690	11,183	71,613,506	21,590,749,336	14.93	8,873	9,017	9,271	67,242,055	17,304,860,533	13.20
2009	11,514	12,086	71,057,714	21,738,553,630	16.20	11,248	11,439	11,798	68,325,530	20,265,352,670	16.46
2010	12,510	13,126	70,020,236	21,456,581,735	17.87	12,062	12,275	12,641	67,286,412	20,007,583,231	17.93
2011	13,213	13,857	70,303,083	21,674,633,858	18.79	12,701	12,885	13,307	67,667,345	20,245,641,217	18.77
2012	10,917	11,390	68,375,451	18,785,992,586	15.97	10,562	10,725	11,009	65,683,234	17,548,470,014	16.08

Table 4. Summary of Nursing Home Facility Care Codes between January 1, 2000 and December 31, 2012, by Setting, Code Group, and Year

Group	Prevalent					Incident					
	Patients	Number of Claims	Eligible Members	Member-Days	Patients per 100K Eligible Members	New Patients	New Claims	Number of Total Claims	Eligible Members	Member-Days	New Patients per 100K Eligible Members
Non-Acute Institutionalized Care Setting (continued)											
99316											
2000	1,202	1,270	9,230,566	2,904,433,573	13.02	673	685	716	8,688,915	2,090,591,856	7.75
2001	993	1,064	9,124,980	2,909,742,403	10.88	927	942	992	8,822,071	2,771,045,432	10.51
2002	1,166	1,219	9,197,577	2,929,790,254	12.68	1,088	1,104	1,140	8,922,359	2,792,899,313	12.19
2003	1,631	1,716	9,093,976	2,892,640,046	17.93	1,522	1,556	1,605	8,832,007	2,761,522,341	17.23
2004	2,738	2,944	9,843,525	3,104,147,591	27.82	2,587	2,647	2,783	9,524,726	2,903,543,041	27.16
2005	3,043	3,251	10,543,348	3,317,438,184	28.86	2,943	3,006	3,150	10,159,668	3,113,137,354	28.97
2006	5,381	5,695	24,633,249	7,485,308,402	21.84	4,430	4,501	4,684	22,960,739	6,096,712,457	19.29
2007	4,983	5,198	28,044,319	8,175,177,239	17.77	4,825	4,912	5,024	26,634,074	7,435,323,167	18.12
2008	10,737	11,248	71,613,506	21,590,749,336	14.99	9,051	9,197	9,457	67,242,077	17,304,838,501	13.46
2009	12,767	13,414	71,057,714	21,738,553,630	17.97	12,492	12,739	13,134	68,325,523	20,265,233,638	18.28
2010	13,422	14,077	70,020,236	21,456,581,735	19.17	12,996	13,202	13,635	67,286,388	20,007,478,176	19.31
2011	15,051	15,829	70,303,083	21,674,633,858	21.41	14,508	14,766	15,254	67,667,371	20,245,458,662	21.44
2012	12,723	13,318	68,375,451	18,785,992,586	18.61	12,290	12,491	12,870	65,683,202	17,548,309,248	18.71
99318											
2000	608	608	9,230,566	2,904,433,573	6.59	66	66	66	8,688,931	2,090,639,515	0.76
2001	177	177	9,124,980	2,909,742,403	1.94	125	125	125	8,822,085	2,771,118,788	1.42
2002	263	263	9,197,577	2,929,790,254	2.86	177	177	177	8,922,372	2,792,974,943	1.98
2003	398	398	9,093,976	2,892,640,046	4.38	245	245	245	8,832,016	2,761,628,934	2.77
2004	621	621	9,843,525	3,104,147,591	6.31	418	418	418	9,524,751	2,903,720,975	4.39
2005	970	975	10,543,348	3,317,438,184	9.20	687	689	692	10,159,681	3,113,335,666	6.76
2006	3,138	3,227	24,633,249	7,485,308,402	12.74	2,251	2,263	2,306	22,960,781	6,096,908,386	9.80
2007	2,995	3,034	28,044,319	8,175,177,239	10.68	2,572	2,588	2,610	26,634,103	7,435,517,771	9.66
2008	3,518	3,567	71,613,506	21,590,749,336	4.91	2,988	3,010	3,033	67,242,166	17,305,373,122	4.44
2009	3,776	3,812	71,057,714	21,738,553,630	5.31	3,350	3,368	3,386	68,325,580	20,266,045,325	4.90
2010	4,092	4,127	70,020,236	21,456,581,735	5.84	3,700	3,713	3,731	67,286,485	20,008,314,291	5.50
2011	4,036	4,084	70,303,083	21,674,633,858	5.74	3,660	3,683	3,704	67,667,473	20,246,427,595	5.41
2012	2,704	2,733	68,375,451	18,785,992,586	3.95	2,610	2,625	2,639	65,683,346	17,549,203,480	3.97

Table 4. Summary of Nursing Home Facility Care Codes between January 1, 2000 and December 31, 2012, by Setting, Code Group, and Year

Group	Prevalent					Incident					
	Patients	Number of Claims	Eligible Members	Member-Days	Patients per 100K Eligible Members	New Patients	New Claims	Number of Total Claims	Eligible Members	Member-Days	New Patients per 100K Eligible Members
Non-Acute Institutionalized Care Setting (continued)											
99379											
2000	3	3	9,230,566	2,904,433,573	0.03	1	1	1	8,688,933	2,090,645,709	0.01
2001	4	4	9,124,980	2,909,742,403	0.04	4	4	4	8,822,087	2,771,130,566	0.05
2002	1	1	9,197,577	2,929,790,254	0.01	1	1	1	8,922,373	2,792,990,415	0.01
2003	1	1	9,093,976	2,892,640,046	0.01	1	1	1	8,832,024	2,761,652,526	0.01
2004	2	2	9,843,525	3,104,147,591	0.02	2	2	2	9,524,758	2,903,760,585	0.02
2005	32	33	10,543,348	3,317,438,184	0.30	32	32	33	10,159,693	3,113,394,929	0.31
2006	18	18	24,633,249	7,485,308,402	0.07	16	16	16	22,960,817	6,097,116,271	0.07
2007	33	34	28,044,319	8,175,177,239	0.12	32	33	33	26,634,128	7,435,743,587	0.12
2008	21	21	71,613,506	21,590,749,336	0.03	21	21	21	67,242,212	17,305,642,678	0.03
2009	19	23	71,057,714	21,738,553,630	0.03	19	19	23	68,325,628	20,266,335,202	0.03
2010	20	26	70,020,236	21,456,581,735	0.03	20	22	26	67,286,533	20,008,637,735	0.03
2011	36	44	70,303,083	21,674,633,858	0.05	36	36	44	67,667,517	20,246,755,311	0.05
2012	8	8	68,375,451	18,785,992,586	0.01	8	8	8	65,683,382	17,549,446,541	0.01
99380											
2000	0	0	9,230,566	2,904,433,573	0.00	0	0	0	8,688,933	2,090,645,779	0.00
2001	1	1	9,124,980	2,909,742,403	0.01	1	1	1	8,822,087	2,771,130,858	0.01
2002	1	1	9,197,577	2,929,790,254	0.01	1	1	1	8,922,373	2,792,990,415	0.01
2003	3	3	9,093,976	2,892,640,046	0.03	3	3	3	8,832,024	2,761,652,384	0.03
2004	7	11	9,843,525	3,104,147,591	0.07	7	8	11	9,524,758	2,903,760,120	0.07
2005	19	28	10,543,348	3,317,438,184	0.18	18	18	19	10,159,692	3,113,395,677	0.18
2006	30	39	24,633,249	7,485,308,402	0.12	25	26	29	22,960,814	6,097,115,763	0.11
2007	30	30	28,044,319	8,175,177,239	0.11	30	30	30	26,634,127	7,435,742,745	0.11
2008	16	16	71,613,506	21,590,749,336	0.02	15	15	15	67,242,212	17,305,643,398	0.02
2009	11	11	71,057,714	21,738,553,630	0.02	11	11	11	68,325,627	20,266,336,000	0.02
2010	13	15	70,020,236	21,456,581,735	0.02	12	12	14	67,286,533	20,008,638,640	0.02
2011	6	6	70,303,083	21,674,633,858	0.01	6	6	6	67,667,517	20,246,758,131	0.01
2012	7	7	68,375,451	18,785,992,586	0.01	7	7	7	65,683,382	17,549,446,808	0.01

Table 4. Summary of Nursing Home Facility Care Codes between January 1, 2000 and December 31, 2012, by Setting, Code Group, and Year

Group	Prevalent					Incident					
	Patients	Number of Claims	Eligible Members	Member-Days	Patients per 100K Eligible Members	New Patients	New Claims	Number of Total Claims	Eligible Members	Member-Days	New Patients per 100K Eligible Members
Non-Acute Institutionalized Care Setting (continued)											
94004											
2000	0	0	9,230,566	2,904,433,573	0.00	0	0	0	8,688,933	2,090,645,779	0.00
2001	1	1	9,124,980	2,909,742,403	0.01	1	1	1	8,822,087	2,771,130,858	0.01
2002	0	0	9,197,577	2,929,790,254	0.00	0	0	0	8,922,373	2,792,990,505	0.00
2003	0	0	9,093,976	2,892,640,046	0.00	0	0	0	8,832,024	2,761,652,616	0.00
2004	0	0	9,843,525	3,104,147,591	0.00	0	0	0	9,524,758	2,903,760,754	0.00
2005	0	0	10,543,348	3,317,438,184	0.00	0	0	0	10,159,693	3,113,397,473	0.00
2006	0	0	24,633,249	7,485,308,402	0.00	0	0	0	22,960,817	6,097,117,750	0.00
2007	34	239	28,044,319	8,175,177,239	0.12	33	40	235	26,634,128	7,435,741,537	0.12
2008	79	355	71,613,506	21,590,749,336	0.11	56	58	227	67,242,206	17,305,637,148	0.08
2009	60	348	71,057,714	21,738,553,630	0.08	51	54	220	68,325,621	20,266,329,833	0.07
2010	45	279	70,020,236	21,456,581,735	0.06	34	35	202	67,286,530	20,008,634,523	0.05
2011	77	197	70,303,083	21,674,633,858	0.11	65	66	158	67,667,512	20,246,751,840	0.10
2012	114	262	68,375,451	18,785,992,586	0.17	90	95	201	65,683,375	17,549,438,216	0.14
Q5003											
2000	54	54	9,230,566	2,904,433,573	0.59	4	4	4	8,688,933	2,090,645,413	0.05
2001	21	21	9,124,980	2,909,742,403	0.23	13	13	13	8,822,087	2,771,129,706	0.15
2002	28	28	9,197,577	2,929,790,254	0.30	18	18	18	8,922,372	2,792,988,873	0.20
2003	48	48	9,093,976	2,892,640,046	0.53	23	23	23	8,832,024	2,761,650,214	0.26
2004	66	66	9,843,525	3,104,147,591	0.67	39	39	39	9,524,756	2,903,756,968	0.41
2005	100	100	10,543,348	3,317,438,184	0.95	48	48	48	10,159,692	3,113,392,755	0.47
2006	152	152	24,633,249	7,485,308,402	0.62	74	74	74	22,960,813	6,097,110,205	0.32
2007	374	420	28,044,319	8,175,177,239	1.33	258	270	303	26,634,116	7,435,724,080	0.97
2008	608	765	71,613,506	21,590,749,336	0.85	470	501	616	67,242,189	17,305,603,748	0.70
2009	624	889	71,057,714	21,738,553,630	0.88	512	560	683	68,325,598	20,266,289,452	0.75
2010	282	316	70,020,236	21,456,581,735	0.40	238	252	271	67,286,504	20,008,616,291	0.35
2011	202	276	70,303,083	21,674,633,858	0.29	174	191	245	67,667,511	20,246,743,882	0.26
2012	117	143	68,375,451	18,785,992,586	0.17	99	107	116	65,683,377	17,549,438,202	0.15

Table 4. Summary of Nursing Home Facility Care Codes between January 1, 2000 and December 31, 2012, by Setting, Code Group, and Year

Group	Prevalent					Incident					
	Patients	Number of Claims	Eligible Members	Member-Days	Patients per 100K Eligible Members	New Patients	New Claims	Number of Total Claims	Eligible Members	Member-Days	New Patients per 100K Eligible Members
Non-Acute Institutionalized Care Setting (continued)											
Q5004											
2000	18	18	9,230,566	2,904,433,573	0.20	1	1	1	8,688,933	2,090,645,548	0.01
2001	8	8	9,124,980	2,909,742,403	0.09	4	4	4	8,822,087	2,771,130,564	0.05
2002	13	13	9,197,577	2,929,790,254	0.14	8	8	8	8,922,373	2,792,989,921	0.09
2003	31	31	9,093,976	2,892,640,046	0.34	17	17	17	8,832,021	2,761,650,933	0.19
2004	42	42	9,843,525	3,104,147,591	0.43	21	21	21	9,524,755	2,903,758,464	0.22
2005	66	66	10,543,348	3,317,438,184	0.63	44	44	44	10,159,693	3,113,393,471	0.43
2006	100	100	24,633,249	7,485,308,402	0.41	57	57	57	22,960,813	6,097,111,890	0.25
2007	398	724	28,044,319	8,175,177,239	1.42	328	383	640	26,634,116	7,435,711,412	1.23
2008	440	918	71,613,506	21,590,749,336	0.61	338	370	675	67,242,183	17,305,598,908	0.50
2009	191	248	71,057,714	21,738,553,630	0.27	156	168	211	68,325,621	20,266,322,803	0.23
2010	71	82	70,020,236	21,456,581,735	0.10	67	71	78	67,286,527	20,008,634,704	0.10
2011	42	59	70,303,083	21,674,633,858	0.06	39	42	56	67,667,516	20,246,755,696	0.06
2012	25	31	68,375,451	18,785,992,586	0.04	23	23	29	65,683,381	17,549,445,813	0.04
All Current Codes (99304, 99305, 99306, 99307, 99308, 99309, 33910, 99315, 99316, 99318, 99379, 99380, 94004, Q5003, Q5004)											
2000	6,488	6,769	9,230,566	2,904,433,573	70.29	2,210	2,244	2,383	8,688,866	2,090,448,700	25.43
2001	3,633	3,849	9,124,980	2,909,742,403	39.81	3,095	3,160	3,300	8,822,022	2,770,852,644	35.08
2002	4,399	4,642	9,197,577	2,929,790,254	47.83	3,732	3,809	3,963	8,922,303	2,792,667,627	41.83
2003	5,946	6,207	9,093,976	2,892,640,046	65.38	4,888	4,977	5,140	8,831,948	2,761,229,126	55.34
2004	8,442	8,896	9,843,525	3,104,147,591	85.76	6,989	7,138	7,417	9,524,639	2,903,150,316	73.38
2005	12,274	15,408	10,543,348	3,317,438,184	116.41	10,098	10,388	13,191	10,159,544	3,112,448,187	99.39
2006	67,793	268,235	24,633,249	7,485,308,402	275.21	44,645	47,897	123,864	22,950,726	6,089,621,027	194.53
2007	64,422	281,871	28,044,319	8,175,177,239	229.71	48,305	53,124	159,348	26,622,775	7,426,536,004	181.44
2008	123,564	378,167	71,613,506	21,590,749,336	172.54	89,079	95,614	216,678	67,227,763	17,292,041,108	132.50
2009	125,465	395,689	71,057,714	21,738,553,630	176.57	106,143	114,664	252,006	68,311,741	20,250,952,574	155.38
2010	135,547	428,978	70,020,236	21,456,581,735	193.58	114,140	123,109	269,190	67,271,696	19,992,567,237	169.67
2011	143,662	448,891	70,303,083	21,674,633,858	204.35	120,829	130,221	285,933	67,652,381	20,229,784,654	178.60
2012	125,757	399,852	68,375,451	18,785,992,586	183.92	106,835	114,619	265,074	65,670,129	17,534,048,117	162.68

Table 4. Summary of Nursing Home Facility Care Codes between January 1, 2000 and December 31, 2012, by Setting, Code Group, and Year

Group	Prevalent					Incident					
	Patients	Number of Claims	Eligible Members	Member-Days	Patients per 100K Eligible Members	New Patients	New Claims	Number of Total Claims	Eligible Members	Member-Days	New Patients per 100K Eligible Members
Non-Acute Institutionalized Care Setting (continued)											
99301											
2000	8,864	9,184	9,230,566	2,904,433,573	96.03	1,554	1,576	1,713	8,688,887	2,090,493,343	17.88
2001	2,358	2,507	9,124,980	2,909,742,403	25.84	1,736	1,770	1,864	8,822,033	2,770,963,600	19.68
2002	2,259	2,420	9,197,577	2,929,790,254	24.56	1,742	1,790	1,885	8,922,343	2,792,830,179	19.52
2003	2,275	2,423	9,093,976	2,892,640,046	25.02	1,803	1,844	1,936	8,831,999	2,761,482,385	20.41
2004	2,196	2,327	9,843,525	3,104,147,591	22.31	1,800	1,843	1,924	9,524,721	2,903,591,445	18.90
2005	1,396	1,474	10,543,348	3,317,438,184	13.24	1,301	1,313	1,377	10,159,670	3,113,276,165	12.81
2006	18	18	24,633,249	7,485,308,402	0.07	3	3	3	22,960,803	6,097,107,201	0.01
2007	14	18	28,044,319	8,175,177,239	0.05	8	8	12	26,634,128	7,435,745,353	0.03
2008	12	14	71,613,506	21,590,749,336	0.02	9	9	11	67,242,212	17,305,643,809	0.01
2009	2	2	71,057,714	21,738,553,630	0.00	2	2	2	68,325,628	20,266,336,654	0.00
2010	2	3	70,020,236	21,456,581,735	0.00	2	2	3	67,286,534	20,008,639,450	0.00
2011	3	3	70,303,083	21,674,633,858	0.00	3	3	3	67,667,517	20,246,758,436	0.00
2012	3	3	68,375,451	18,785,992,586	0.00	3	3	3	65,683,382	17,549,447,218	0.00
99302											
2000	6,733	7,175	9,230,566	2,904,433,573	72.94	1,935	1,960	2,180	8,688,851	2,090,458,711	22.27
2001	2,842	3,154	9,124,980	2,909,742,403	31.15	2,271	2,308	2,537	8,822,014	2,770,923,154	25.74
2002	2,852	3,192	9,197,577	2,929,790,254	31.01	2,401	2,447	2,712	8,922,317	2,792,778,376	26.91
2003	3,132	3,587	9,093,976	2,892,640,046	34.44	2,611	2,666	2,945	8,831,966	2,761,413,438	29.56
2004	3,167	3,519	9,843,525	3,104,147,591	32.17	2,715	2,768	3,031	9,524,700	2,903,516,071	28.50
2005	3,054	3,421	10,543,348	3,317,438,184	28.97	2,737	2,787	3,048	10,159,628	3,113,151,282	26.94
2006	25	25	24,633,249	7,485,308,402	0.10	16	16	16	22,960,761	6,097,092,648	0.07
2007	3	3	28,044,319	8,175,177,239	0.01	1	1	1	26,634,127	7,435,745,975	0.00
2008	13	13	71,613,506	21,590,749,336	0.02	11	11	11	67,242,212	17,305,643,640	0.02
2009	6	6	71,057,714	21,738,553,630	0.01	5	5	5	68,325,628	20,266,336,508	0.01
2010	0	0	70,020,236	21,456,581,735	0.00	0	0	0	67,286,534	20,008,639,635	0.00
2011	0	0	70,303,083	21,674,633,858	0.00	0	0	0	67,667,517	20,246,758,670	0.00
2012	0	0	68,375,451	18,785,992,586	0.00	0	0	0	65,683,382	17,549,447,494	0.00

Table 4. Summary of Nursing Home Facility Care Codes between January 1, 2000 and December 31, 2012, by Setting, Code Group, and Year

Group	Prevalent					Incident					
	Patients	Number of Claims	Eligible Members	Member-Days	Patients per 100K Eligible Members	New Patients	New Claims	Number of Total Claims	Eligible Members	Member-Days	New Patients per 100K Eligible Members
Non-Acute Institutionalized Care Setting (continued)											
99303											
2000	9,578	10,691	9,230,566	2,904,433,573	103.76	3,774	3,846	4,487	8,688,773	2,090,306,179	43.44
2001	6,087	7,172	9,124,980	2,909,742,403	66.71	5,185	5,328	6,183	8,821,942	2,770,658,282	58.77
2002	6,347	7,501	9,197,577	2,929,790,254	69.01	5,572	5,742	6,670	8,922,219	2,792,501,564	62.45
2003	7,232	8,657	9,093,976	2,892,640,046	79.53	6,353	6,563	7,690	8,831,883	2,761,078,328	71.93
2004	8,281	9,834	9,843,525	3,104,147,591	84.13	7,504	7,756	8,967	9,524,600	2,903,091,435	78.79
2005	8,347	9,931	10,543,348	3,317,438,184	79.17	7,796	8,095	9,311	10,159,520	3,112,687,667	76.74
2006	51	53	24,633,249	7,485,308,402	0.21	27	27	29	22,960,669	6,097,034,313	0.12
2007	3	3	28,044,319	8,175,177,239	0.01	2	2	2	26,634,127	7,435,746,017	0.01
2008	12	12	71,613,506	21,590,749,336	0.02	12	12	12	67,242,212	17,305,643,780	0.02
2009	6	6	71,057,714	21,738,553,630	0.01	6	6	6	68,325,628	20,266,336,453	0.01
2010	4	4	70,020,236	21,456,581,735	0.01	4	4	4	67,286,534	20,008,639,304	0.01
2011	3	3	70,303,083	21,674,633,858	0.00	3	3	3	67,667,517	20,246,758,370	0.00
2012	5	5	68,375,451	18,785,992,586	0.01	4	4	4	65,683,382	17,549,447,087	0.01
99311											
2000	28,010	33,629	9,230,566	2,904,433,573	303.45	6,304	6,522	8,776	8,688,560	2,089,987,277	72.56
2001	10,432	18,211	9,124,980	2,909,742,403	114.32	7,947	8,350	14,209	8,821,732	2,770,244,867	90.08
2002	10,399	19,117	9,197,577	2,929,790,254	113.06	7,977	8,393	12,667	8,921,883	2,792,066,900	89.41
2003	11,101	20,802	9,093,976	2,892,640,046	122.07	8,499	8,986	13,963	8,831,521	2,760,648,471	96.23
2004	11,947	19,425	9,843,525	3,104,147,591	121.37	9,556	10,257	14,818	9,524,384	2,902,685,531	100.33
2005	10,281	16,685	10,543,348	3,317,438,184	97.51	8,720	9,515	14,101	10,159,327	3,112,398,169	85.83
2006	113	137	24,633,249	7,485,308,402	0.46	65	65	82	22,960,621	6,097,007,906	0.28
2007	2	2	28,044,319	8,175,177,239	0.01	1	1	1	26,634,128	7,435,746,049	0.00
2008	7	7	71,613,506	21,590,749,336	0.01	4	4	4	67,242,212	17,305,644,299	0.01
2009	1	1	71,057,714	21,738,553,630	0.00	1	1	1	68,325,628	20,266,336,832	0.00
2010	0	0	70,020,236	21,456,581,735	0.00	0	0	0	67,286,534	20,008,639,635	0.00
2011	0	0	70,303,083	21,674,633,858	0.00	0	0	0	67,667,517	20,246,758,670	0.00
2012	0	0	68,375,451	18,785,992,586	0.00	0	0	0	65,683,382	17,549,447,494	0.00

Table 4. Summary of Nursing Home Facility Care Codes between January 1, 2000 and December 31, 2012, by Setting, Code Group, and Year

Group	Prevalent					Incident					
	Patients	Number of Claims	Eligible Members	Member-Days	Patients per 100K Eligible Members	New Patients	New Claims	Number of Total Claims	Eligible Members	Member-Days	New Patients per 100K Eligible Members
Non-Acute Institutionalized Care Setting (continued)											
99312											
2000	27,609	33,208	9,230,566	2,904,433,573	299.10	6,856	7,129	9,431	8,688,522	2,089,944,021	78.91
2001	11,742	16,763	9,124,980	2,909,742,403	128.68	9,114	9,586	13,132	8,821,701	2,770,195,481	103.31
2002	12,546	18,794	9,197,577	2,929,790,254	136.41	10,039	10,628	15,258	8,921,983	2,791,977,755	112.52
2003	13,849	21,641	9,093,976	2,892,640,046	152.29	11,148	11,887	17,527	8,831,547	2,760,503,396	126.23
2004	16,362	30,079	9,843,525	3,104,147,591	166.22	13,640	14,613	25,505	9,524,161	2,902,299,591	143.21
2005	16,089	32,716	10,543,348	3,317,438,184	152.60	13,794	14,968	26,890	10,158,837	3,111,748,374	135.78
2006	124	156	24,633,249	7,485,308,402	0.50	69	70	78	22,960,444	6,096,921,120	0.30
2007	9	9	28,044,319	8,175,177,239	0.03	8	8	8	26,634,128	7,435,745,343	0.03
2008	6	6	71,613,506	21,590,749,336	0.01	5	5	5	67,242,212	17,305,644,229	0.01
2009	2	3	71,057,714	21,738,553,630	0.00	2	2	3	68,325,628	20,266,336,773	0.00
2010	0	0	70,020,236	21,456,581,735	0.00	0	0	0	67,286,534	20,008,639,558	0.00
2011	2	2	70,303,083	21,674,633,858	0.00	2	2	2	67,667,517	20,246,758,510	0.00
2012	1	1	68,375,451	18,785,992,586	0.00	1	1	1	65,683,382	17,549,447,384	0.00
99313											
2000	13,836	15,037	9,230,566	2,904,433,573	149.89	3,020	3,083	3,500	8,688,776	2,090,351,438	34.76
2001	5,678	6,908	9,124,980	2,909,742,403	62.22	4,378	4,527	5,447	8,821,947	2,770,713,729	49.63
2002	6,815	9,847	9,197,577	2,929,790,254	74.10	5,379	5,601	7,782	8,922,164	2,792,473,887	60.29
2003	8,290	12,488	9,093,976	2,892,640,046	91.16	6,622	6,906	9,844	8,831,759	2,761,000,279	74.98
2004	10,488	18,070	9,843,525	3,104,147,591	106.55	8,723	9,241	15,100	9,524,380	2,902,890,392	91.59
2005	9,915	16,502	10,543,348	3,317,438,184	94.04	8,712	9,384	14,273	10,159,307	3,112,446,550	85.75
2006	106	118	24,633,249	7,485,308,402	0.43	50	51	55	22,960,580	6,097,011,005	0.22
2007	23	34	28,044,319	8,175,177,239	0.08	20	20	31	26,634,128	7,435,743,852	0.08
2008	9	9	71,613,506	21,590,749,336	0.01	8	8	8	67,242,212	17,305,644,026	0.01
2009	8	11	71,057,714	21,738,553,630	0.01	8	8	11	68,325,628	20,266,336,115	0.01
2010	1	1	70,020,236	21,456,581,735	0.00	1	1	1	67,286,533	20,008,639,525	0.00
2011	0	0	70,303,083	21,674,633,858	0.00	0	0	0	67,667,517	20,246,758,670	0.00
2012	1	1	68,375,451	18,785,992,586	0.00	1	1	1	65,683,382	17,549,447,459	0.00

Table 4. Summary of Nursing Home Facility Care Codes between January 1, 2000 and December 31, 2012, by Setting, Code Group, and Year

Group	Prevalent					Incident					
	Patients	Number of Claims	Eligible Members	Member-Days	Patients per 100K Eligible Members	New Patients	New Claims	Number of Total Claims	Eligible Members	Member-Days	New Patients per 100K Eligible Members
Non-Acute Institutionalized Care Setting (continued)											
G0066											
2000	0	0	9,230,566	2,904,433,573	0.00	0	0	0	8,688,933	2,090,645,779	0.00
2001	0	0	9,124,980	2,909,742,403	0.00	0	0	0	8,822,087	2,771,130,948	0.00
2002	0	0	9,197,577	2,929,790,254	0.00	0	0	0	8,922,373	2,792,990,505	0.00
2003	0	0	9,093,976	2,892,640,046	0.00	0	0	0	8,832,024	2,761,652,616	0.00
2004	0	0	9,843,525	3,104,147,591	0.00	0	0	0	9,524,758	2,903,760,754	0.00
2005	0	0	10,543,348	3,317,438,184	0.00	0	0	0	10,159,693	3,113,397,473	0.00
2006	0	0	24,633,249	7,485,308,402	0.00	0	0	0	22,960,817	6,097,117,750	0.00
2007	0	0	28,044,319	8,175,177,239	0.00	0	0	0	26,634,128	7,435,746,220	0.00
2008	0	0	71,613,506	21,590,749,336	0.00	0	0	0	67,242,212	17,305,644,728	0.00
2009	0	0	71,057,714	21,738,553,630	0.00	0	0	0	68,325,628	20,266,336,922	0.00
2010	0	0	70,020,236	21,456,581,735	0.00	0	0	0	67,286,534	20,008,639,635	0.00
2011	0	0	70,303,083	21,674,633,858	0.00	0	0	0	67,667,517	20,246,758,670	0.00
2012	0	0	68,375,451	18,785,992,586	0.00	0	0	0	65,683,382	17,549,447,494	0.00
All Past Codes (99301, 99302, 99303, 99311, 99312, 99313, G0066)											
2000	39,253	55,654	9,230,566	2,904,433,573	425.25	11,009	11,477	18,611	8,688,040	2,089,454,912	126.71
2001	18,406	36,644	9,124,980	2,909,742,403	201.71	14,519	15,416	28,719	8,821,280	2,769,521,176	164.59
2002	19,330	41,730	9,197,577	2,929,790,254	210.16	15,316	16,279	30,425	8,921,337	2,791,254,263	171.68
2003	21,382	48,384	9,093,976	2,892,640,046	235.12	17,007	18,135	35,240	8,830,902	2,759,695,078	192.59
2004	24,196	59,358	9,843,525	3,104,147,591	245.81	19,681	21,051	46,826	9,523,513	2,901,466,885	206.66
2005	24,158	62,022	10,543,348	3,317,438,184	229.13	20,005	21,486	45,886	10,157,899	3,110,899,254	196.94
2006	380	463	24,633,249	7,485,308,402	1.54	180	181	215	22,960,201	6,096,773,061	0.78
2007	52	68	28,044,319	8,175,177,239	0.19	39	39	55	26,634,126	7,435,741,599	0.15
2008	58	60	71,613,506	21,590,749,336	0.08	49	49	51	67,242,212	17,305,640,144	0.07
2009	25	29	71,057,714	21,738,553,630	0.04	24	24	28	68,325,628	20,266,334,725	0.04
2010	7	8	70,020,236	21,456,581,735	0.01	7	7	8	67,286,533	20,008,638,932	0.01
2011	8	8	70,303,083	21,674,633,858	0.01	8	8	8	67,667,517	20,246,757,976	0.01
2012	9	9	68,375,451	18,785,992,586	0.01	8	8	8	65,683,382	17,549,446,756	0.01

Figure 2a. Number of Prevalent Nursing Home Facility Care Code Patients per 100,000 Eligible Members between January 1, 2000 and December 31, 2011 by Year and Code in Any Care Setting (Current Codes)

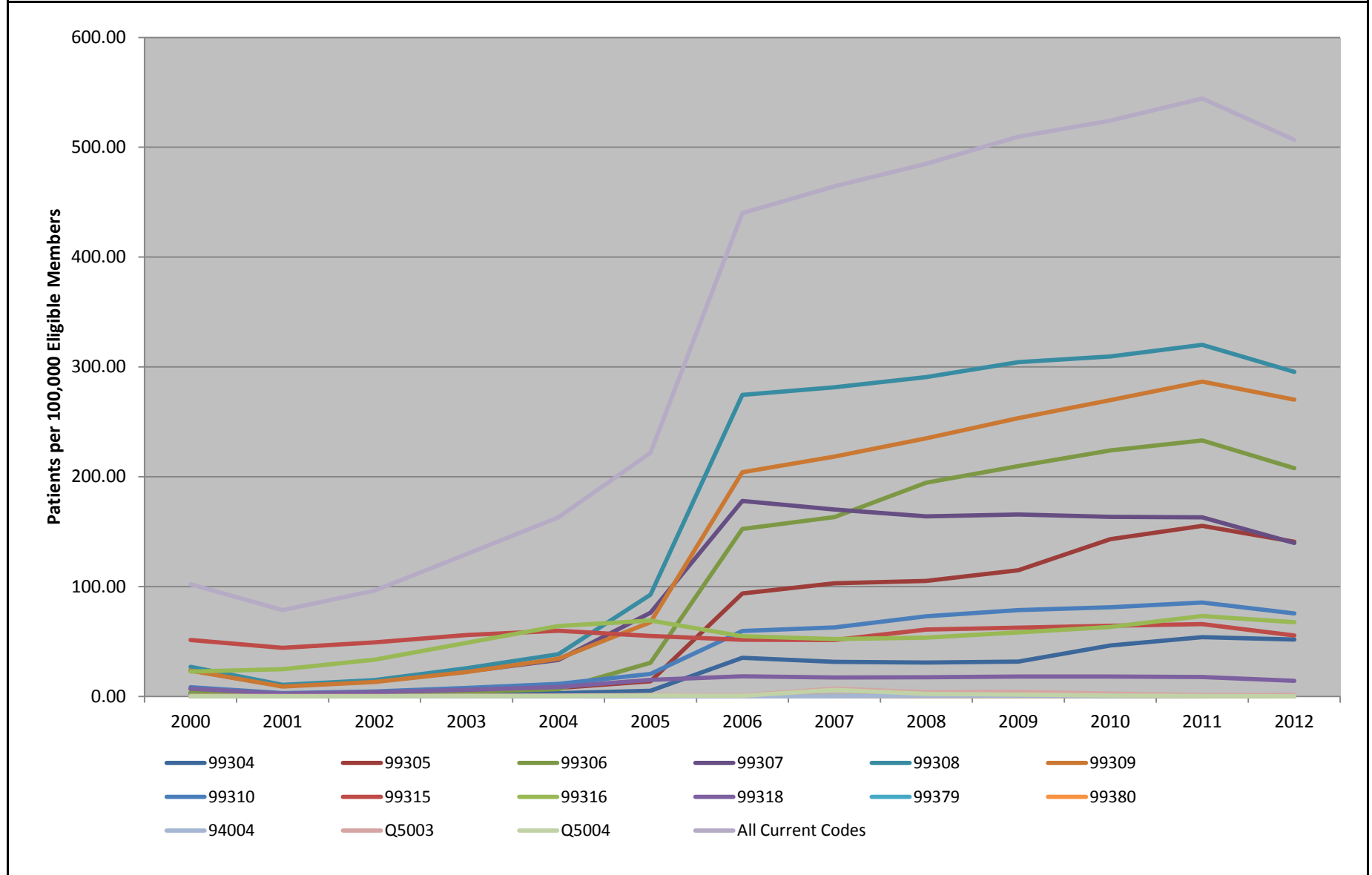
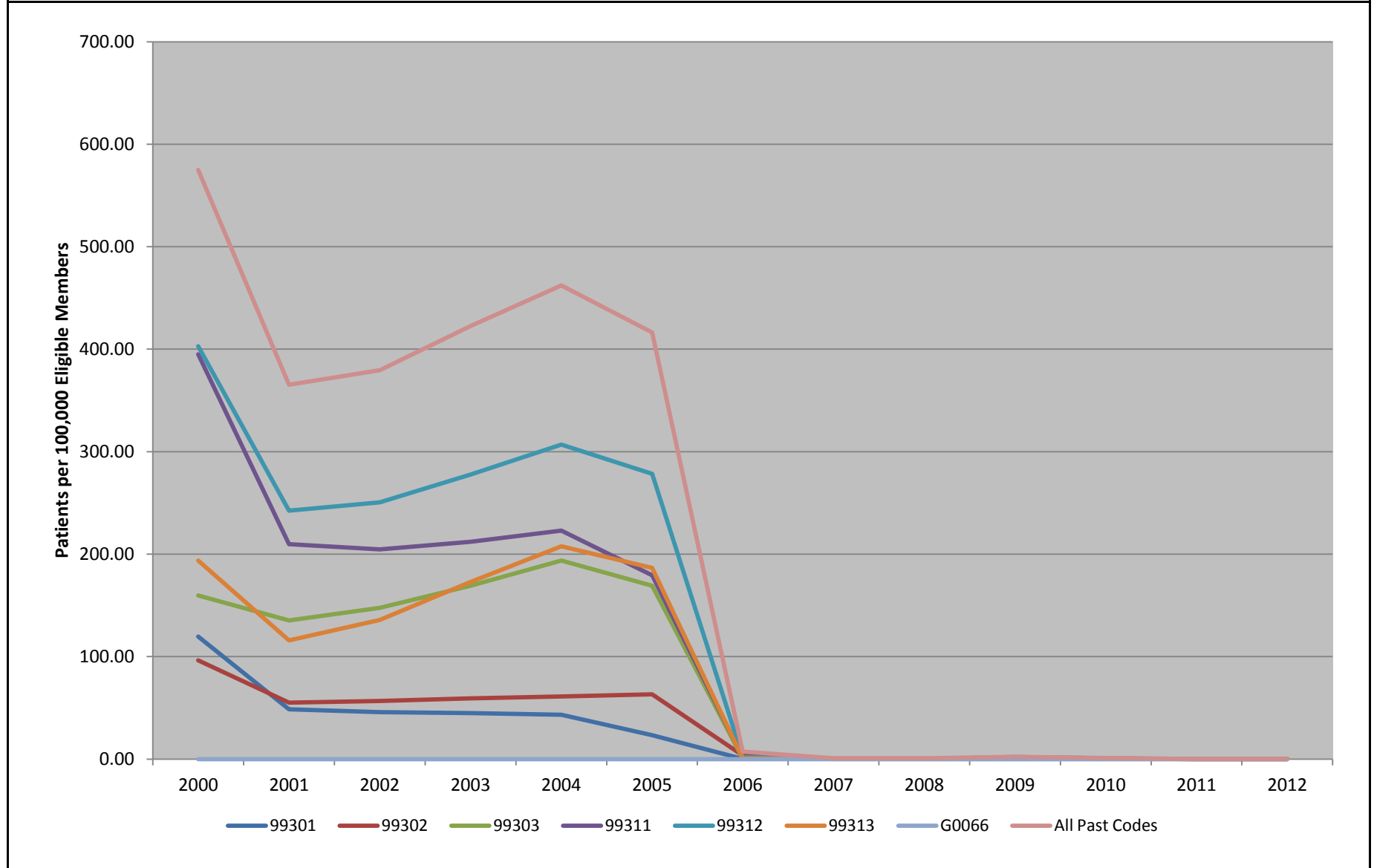


Figure 2b. Number of Prevalent Nursing Home Facility Care Code Patients per 100,000 Eligible Members between January 1, 2000 and December 31, 2011 by Year and Code in Any Care Setting (Past Codes)



Appendix A. Descriptions of Codes

HCPCS Code	Definition
99304	Initial nursing facility care, per day, for the evaluation and management of a patient, which requires these 3 key components: A detailed or comprehensive history; A detailed or comprehensive examination; and Medical decision making that is straightforward or of low complexity. Counseling and/or coordination of care with other physicians, other qualified health care professionals, or agencies are provided consistent with the nature of the problem(s) and the patient's and/or family's needs. Usually, the problem(s) requiring admission are of low severity. Typically, 25 minutes are spent at the bedside and on the patient's facility floor or unit.
99305	Initial nursing facility care, per day, for the evaluation and management of a patient, which requires these 3 key components: A comprehensive history; A comprehensive examination; and Medical decision making of moderate complexity. Counseling and/or coordination of care with other physicians, other qualified health care professionals, or agencies are provided consistent with the nature of the problem(s) and the patient's and/or family's needs. Usually, the problem(s) requiring admission are of moderate severity. Typically, 35 minutes are spent at the bedside and on the patient's facility floor or unit.
99306	Initial nursing facility care, per day, for the evaluation and management of a patient, which requires these 3 key components: A comprehensive history; A comprehensive examination; and Medical decision making of high complexity. Counseling and/or coordination of care with other physicians, other qualified health care professionals, or agencies are provided consistent with the nature of the problem(s) and the patient's and/or family's needs. Usually, the problem(s) requiring admission are of high severity. Typically, 45 minutes are spent at the bedside and on the patient's facility floor or unit.
99307	Subsequent nursing facility care, per day, for the evaluation and management of a patient, which requires at least 2 of these 3 key components: A problem focused interval history; A problem focused examination; Straightforward medical decision making. Counseling and/or coordination of care with other physicians, other qualified health care professionals, or agencies are provided consistent with the nature of the problem(s) and the patient's and/or family's needs. Usually, the patient is stable, recovering, or improving. Typically, 10 minutes are spent at the bedside and on the patient's facility floor or unit.
99308	Subsequent nursing facility care, per day, for the evaluation and management of a patient, which requires at least 2 of these 3 key components: An expanded problem focused interval history; An expanded problem focused examination; Medical decision making of low complexity. Counseling and/or coordination of care with other physicians, other qualified health care professionals, or agencies are provided consistent with the nature of the problem(s) and the patient's and/or family's needs. Usually, the patient is responding inadequately to therapy or has developed a minor complication. Typically, 15 minutes are spent at the bedside and on the patient's facility floor or unit.
99309	Subsequent nursing facility care, per day, for the evaluation and management of a patient, which requires at least 2 of these 3 key components: A detailed interval history; A detailed examination; Medical decision making of moderate complexity. Counseling and/or coordination of care with other physicians, other qualified health care professionals, or agencies are provided consistent with the nature of the problem(s) and the patient's and/or family's needs. Usually, the patient has developed a significant complication or a significant new problem. Typically, 25 minutes are spent at the bedside and on the patient's facility floor or unit.
99310	Subsequent nursing facility care, per day, for the evaluation and management of a patient, which requires at least 2 of these 3 key components: A comprehensive interval history; A comprehensive examination; Medical decision making of high complexity. Counseling and/or coordination of care with other physicians, other qualified health care professionals, or agencies are provided consistent with the nature of the problem(s) and the patient's and/or family's needs. The patient may be unstable or may have developed a significant new problem requiring immediate physician attention. Typically, 35 minutes are spent at the bedside and on the patient's facility floor or unit.

99315	Nursing facility discharge day management; 30 minutes or less.
99316	Nursing facility discharge day management; more than 30 minutes.
99318	Evaluation and management of a patient involving an annual nursing facility assessment, which requires these 3 key components: A detailed interval history; A comprehensive examination; and Medical decision making that is of low to moderate complexity. Counseling and/or coordination of care with other physicians, other qualified health care professionals, or agencies are provided consistent with the nature of the problem(s) and the patient's and/or family's needs. Usually, the patient is stable, recovering, or improving. Typically, 30 minutes are spent at the bedside and on the patient's facility floor or unit.
99379	Supervision of a nursing facility patient (patient not present) requiring complex and multidisciplinary care modalities involving regular development and/or revision of care plans by that individual, review of subsequent reports of patient status, review of related laboratory and other studies, communication (including telephone calls) for purposes of assessment or care decisions with health care professional(s), family member(s), surrogate decision maker(s) (eg, legal guardian) and/or key caregiver(s) involved in patient's care, integration of new information into the medical treatment plan and/or adjustment of medical therapy, within a calendar month; 15-29 minutes.
99380	Supervision of a nursing facility patient (patient not present) requiring complex and multidisciplinary care modalities involving regular development and/or revision of care plans by that individual, review of subsequent reports of patient status, review of related laboratory and other studies, communication (including telephone calls) for purposes of assessment or care decisions with health care professional(s), family member(s), surrogate decision maker(s) (eg, legal guardian) and/or key caregiver(s) involved in patient's care, integration of new information into the medical treatment plan and/or adjustment of medical therapy, within a calendar month; 30 minutes or more.
94004	Ventilation assist and management, initiation of pressure or volume preset ventilators for assisted or controlled breathing; nursing facility, per day.
Q5003	Hospice care provided in nursing long term care facility (ltc) or non-skilled nursing facility (nf).
Q5004	Hospice care provided in skilled nursing facility (snf).
99301	Evaluation and management of a new or established patient involving an annual NF assessment: 30 minutes at the bedside.
99302	Evaluation and management of a new or established patient involving an annual NF assessment of a complication or a new problem: 40 minutes at the bedside.
99303	Evaluation and management of a new or established patient involving an annual NF assessment at the time of initial admission to the facility: 50 minutes at the bedside.
99311	Subsequent NF care, per day, for the evaluation and management of a new or established patient: 15 minutes at the bedside.
99312	Subsequent NF care, per day, for the evaluation and management of a new or established patient who is responding inadequately to therapy or has developed a minor complication: 25 minutes at the bedside.
99313	Subsequent NF care, per day, for the evaluation and management of a new or established patient who has developed a significant complication or a new problem: 35 minutes at the bedside.
G0066	Physician supervision of a NF patient (patient not present); 30 minutes or more per month.