

Disclaimer

The following report(s) provides findings from an FDA-initiated query using its Mini-Sentinel pilot. While Mini-Sentinel queries may be undertaken to assess potential medical product safety risks, they may also be initiated for various other reasons. Some examples include determining a rate or count of an identified health outcome of interest, examining medical product use, exploring the feasibility of future, more detailed analyses within Mini-Sentinel, and seeking to better understand the capabilities of the Mini-Sentinel pilot.

Data obtained through Mini-Sentinel are intended to complement other types of evidence such as preclinical studies, clinical trials, post market studies, and adverse event reports, all of which are used by FDA to inform regulatory decisions regarding medical product safety. The information contained in this report is provided as part of FDA's commitment to place knowledge acquired from the Mini-Sentinel pilot in the public domain as soon as possible. Any public health actions taken by FDA regarding products involved in Mini-Sentinel queries will continue to be communicated through existing channels.

FDA wants to emphasize that the fact that FDA has initiated a query involving a medical product and is reporting findings related to that query does not mean that FDA is suggesting health care practitioners should change their prescribing practices for the medical product or that patients taking the medical product should stop using it. Patients who have questions about the use of an identified medical product should contact their health care practitioners.

The following report contains a description of the request, request specifications, and results from the modular program run(s).

If you are using a web page screen reader and are unable to access this document, please contact the Sentinel Operations Center for assistance at info@sentinelssystem.org.

Overview for Request MPR_WP21_v01

<u>Request ID</u>	TO09y05_MPR_WP21_v01
<u>Request Description</u>	This report investigated prevalence and incidence of promethazine use in the Mini-Sentinel Distributed Database (MSDD).
<u>Data Source</u>	Data from January 1, 2000 to May 31, 2013 from 18 Data Partners contributing to the Mini-Sentinel Distributed Database (MSDD) were included in this request. This request was distributed to all 18 Data Partners on March 4, 2014.
<u>Study Design</u>	This request was designed to investigate prevalence and incidence of promethazine use in the MSDD. Appendix A lists the generic names included in this request. The number of users, dispensings, days supplied, amount supplied, eligible members, member-years, and other counts were reported. Three scenarios were examined, which are described in Appendix B.
<u>Cohort Eligibility</u>	Patients in the following age groups were included in the cohort: 0-5 months, 6-11 months, 12-23 months, 2-4 years, 5-9 years, 10-17 years, 18-44 years, 45-64 years, 65+ years.
<u>Criteria</u>	
<u>Notes:</u>	Please contact the Sentinel Operations Center Query Fulfillment Team (qf@sentinelssystem.org) for questions and to provide comments/suggestions for future enhancements to this document.

Table of Contents

<u>Glossary</u>	List of Terms and Definitions Found in this Report
<u>Table 1a</u>	Number of Prevalent Users, Dispensings, Days Supplied Amount Supplied, Eligible Members, Member-Years, Days Supplied per User, Dispensings per User, Days Supplied per Dispensing, and Number of Users per 1,000 Eligible Members by Drug Product from January 1, 2000 to May 31, 2013
<u>Table 1b</u>	Number of Incident Users, Dispensings, Days Supplied Amount Supplied, Eligible Members, Member-Years, Days Supplied per User, Dispensings per User, Days Supplied per Dispensing, and Number of Users per 1,000 Eligible Members by Drug Product from January 1, 2000 to May 31, 2013
<u>Table 2a</u>	Number of Prevalent Users, Dispensings, Days Supplied Amount Supplied, Eligible Members, Member-Years, Days Supplied per User, Dispensings per User, Days Supplied per Dispensing, and Number of Users per 1,000 Eligible Members by Drug Product and Age Group from January 1, 2000 to May 31, 2013
<u>Table 2b</u>	Number of Incident Users, Dispensings, Days Supplied Amount Supplied, Eligible Members, Member-Years, Days Supplied per User, Dispensings per User, Days Supplied per Dispensing, and Number of Users per 1,000 Eligible Members by Drug Product and Age Group from January 1, 2000 to May 31, 2013
<u>Table 3a</u>	Number of Prevalent Users, Dispensings, Days Supplied Amount Supplied, Eligible Members, Member-Years, Days Supplied per User, Dispensings per User, Days Supplied per Dispensing, and Number of Users per 1,000 Eligible Members by Drug Product and Sex from January 1, 2000 to May 31, 2013
<u>Table 3b</u>	Number of Incident Users, Dispensings, Days Supplied Amount Supplied, Eligible Members, Member-Years, Days Supplied per User, Dispensings per User, Days Supplied per Dispensing, and Number of Users per 1,000 Eligible Members by Drug Product and Sex from January 1, 2000 to May 31, 2013
<u>Table 4a</u>	Number of Prevalent Users, Dispensings, Days Supplied Amount Supplied, Eligible Members, Member-Years, Days Supplied per User, Dispensings per User, Days Supplied per Dispensing, and Number of Users per 1,000 Eligible Members by Drug Product and Year from January 1, 2000 to May 31, 2013
<u>Table 4b</u>	Number of Incident Users, Dispensings, Days Supplied Amount Supplied, Eligible Members, Member-Years, Days Supplied per User, Dispensings per User, Days Supplied per Dispensing, and Number of Users per 1,000 Eligible Members by Drug Product and Year from January 1, 2000 to May 31, 2013
<u>Figure 1a</u>	Prevalent Promethazine Use in the Mini-Sentinel Distributed Database (MSDD) between January 1, 2000 and May 31, 2013, by Drug Product and Year
<u>Figure 1b</u>	Incident Promethazine Use in the Mini-Sentinel Distributed Database (MSDD) between January 1, 2000 and May 31, 2013, by Drug Product and Year
<u>Table 5a</u>	Number of Prevalent Users, Dispensings, Days Supplied Amount Supplied, Eligible Members, Member-Years, Days Supplied per User, Dispensings per User, Days Supplied per Dispensing, and Number of Users per 1,000 Eligible Members by Drug Product, Age Group, and Year from January 1, 2000 to May 31, 2013
<u>Table 5b</u>	Number of Incident Users, Dispensings, Days Supplied Amount Supplied, Eligible Members, Member-Years, Days Supplied per User, Dispensings per User, Days Supplied per Dispensing, and Number of Users per 1,000 Eligible Members by Drug Product, Age Group, and Year from January 1, 2000 to May 31, 2013
<u>Appendix A</u>	Generic Drugs Included in this Request
<u>Appendix B</u>	Modular Program Specifications for Request MPR_WP21_v01
<u>Appendix C</u>	Dates of Available Data for Each Data Partner up to Request Send Date (March 4, 2014)

List of Terms and Definitions Found in this Report

Amount Supplied - number of units (pills, tablets, vials) dispensed. Net amount per NDC per dispensing. This is equivalent to the "RxAmt"

Care Setting - Contains the care settings considered for the individual diagnosis or procedure codes of interest. The following are valid entries:

IP: inpatient hospital stays; IS: non-acute institutional stays; ED: emergency department visits; AV: ambulatory visits; OA: other ambulatory

Days Supplied - Number of days supplied for all dispensings encountered by individuals in the prevalent or incident cohort. The number is reported by the pharmacist as the number of days that the medications supports, based on the number of doses. (To be included in the incident-based cohort, a member must have a dispensing that meets the criteria specified for incidence type and washout period. However, once a member is included in the incident cohort, all dispensings for that individual are counted as dispensings.)

Dispensings - Total number of dispensings for members included in the prevalent- or incident-based cohort. To be included in the incident-based cohort, a member must have a dispensing that meets the criteria specified for incidence type and washout period. However, once a member is included in the incident cohort, all dispensings for that individual are counted as dispensings.

Eligible Members (incidence-based cohort) - Number of members eligible for incident diagnosis (defined by the washout period) with drug and/or medical coverage during the query period.

Eligible Members (prevalence-based cohort) - Number of members with at least one day of drug and/or medical coverage during the query period.

Enrollment Gap - Number of days allowed between two consecutive enrollment periods without breaking a "continuously enrolled" sequence.

Exposure - NDC and/or procedure and/or diagnosis code values for the exposure(s) of interest.

Incidence Type (incidence-based cohort) - *Minimum incidence type* will only consider the first claim in the query period as long as it is the first claim in the user's entire available history. *Single incidence type* will consider the first claim in the query period that satisfies the washout period criteria. That is, incidence is defined as the first claim during the query period with no evidence of a prior claim during the previous washout period days. *Multiple incidence type* will use the washout period to establish incidence and consider all qualifying incident claims.

"Incident with Respect to" Codes - NDC and/or procedure and/or diagnosis codes to be used to refine the incident definition for the exposure(s) of interest. For example, if a requester is examining exposure to DRUG A but wants incidence of DRUG A to be defined with respect to DRUG A and DRUG B, the Incident with Respect to Code fields would include both DRUG A and DRUG B codes.

Incident Only Care Setting - Contains the care settings considered for the individual diagnosis or procedure codes included as "Incident with Respect to" codes.

Member-Years (incidence-based cohort) - Sum of all years of enrollment with drug and/or medical coverage in the query period preceded by a washout period.

Member-Years (prevalence-based cohort) - Sum of all years members are enrolled with drug and/or medical coverage during the query period.

New Starts - Number of incident dispensings during the query period. Patient must have no prior dispensings of interest in the washout period. For a single and minimum incidence type, an individual may have no more than one new start. For a multiple incidence type, an individual may have more than one new start.

New Users - Number of members with incident claims during the query period. Member must have no evidence of claims of interest (defined by incidence criteria) in the prior washout period. A patient may only be counted once in a query period.

Query Period - Period in which the modular program looks for diagnoses of interest.

Washout Period (incidence-based cohort) - Number of days a patient is required to have no evidence of prior claim of interest and continuous drug and/or medical coverage.

*all terms may not be used in this report

Table 1a. Number of Prevalent Users, Dispensings, Days Supplied, Amount Supplied, Eligible Members, Member-Years, Days Supplied per User, Dispensings per User, Days Supplied per Dispensing, and Number of Users per 1,000 Eligible Members by Drug Product to January 1, 2000 from May 31, 2013

	Users	Dispensings	Days Supplied	Amount Supplied	Eligible Members	Member-Years	Days Supplied per user	Dispensings per User	Days Supplied per Dispensing	Users per 1K Eligible Members
Promethazine (Liquid Only)	429,902	638,540	5,502,838	113,672,372	113,835,160	305,729,931	12.80	1.49	8.62	3.78
Promethazine (Tablet Only)	4,205,903	9,031,834	75,857,255	293,177,122	113,835,160	305,729,931	18.04	2.15	8.40	36.95
Promethazine/Codeine and Promethazine/Phenylephrine/Codeine	3,140,637	4,952,083	54,193,791	945,124,772	113,835,160	305,729,931	17.26	1.58	10.94	27.59

Table 1b. Number of Incident Users, Dispensings, Days Supplied, Amount Supplied, Eligible Members, Member-Years, Days Supplied per User, Dispensings per User, Days Supplied per Dispensing, and Number of Users per 1,000 Eligible Members by Drug Product from January 1, 2000 to May 31, 2013

	New Users	Dispensings	Days Supplied	Amount Supplied	Eligible Members	Member-Years	Days Supplied per user	Dispensings per User	Days Supplied per Dispensing	New Users per 1K Eligible Members
Promethazine (Liquid Only)	334,894	336,105	2,821,628	53,355,456	93,601,894	241,372,297	8.43	1.00	8.40	3.58
Promethazine (Tablet Only)	3,284,369	3,291,329	18,406,770	78,732,179	93,601,894	236,227,123	5.60	1.00	5.59	35.09
Promethazine/Codeine and Promethazine/Phenylephrine/Codeine	2,473,343	2,474,098	27,301,836	453,770,928	93,601,894	236,013,817	11.04	1.00	11.04	26.42

Table 2a. Number of Prevalent Users, Dispensings, Days Supplied, Amount Supplied, Eligible Members, Member-Years, Days Supplied per User, Dispensings per User, Days Supplied per Dispensing, and Number of Users per 1,000 Eligible Members by Drug Product and Age Group from January 1, 2000 to May 31, 2013

	Users	Dispensings	Days Supplied	Amount Supplied	Eligible Members	Member-Years	Days Supplied per user	Dispensings per User	Days Supplied per Dispensing	Users per 1K Eligible Members
Promethazine (Liquid Only)										
0 to 5 Months	1,505	1,639	16,393	138,036	3,662,644	1,589,292	10.89	1.09	10.00	0.41
6 to 11 Months	5,231	5,833	57,516	563,990	3,587,212	1,697,810	11.00	1.12	9.86	1.46
12 to 23 Months	13,281	15,059	139,463	1,655,368	4,444,514	3,527,210	10.50	1.13	9.26	2.99
2 to 4 Years	71,668	87,302	659,038	9,644,989	7,402,184	11,291,676	9.20	1.22	7.55	9.68
5 to 9 Years	110,516	140,694	909,672	17,710,853	10,477,293	19,855,060	8.23	1.27	6.47	10.55
10 to 17 Years	50,519	62,778	423,552	9,936,528	15,005,187	33,943,372	8.38	1.24	6.75	3.37
18 to 44 Years	92,232	130,755	1,211,314	28,844,715	54,077,095	116,008,745	13.13	1.42	9.26	1.71
45 to 64 Years	75,782	129,225	1,326,203	30,800,572	31,931,924	86,087,673	17.50	1.71	10.26	2.37
65+ Years	35,228	65,255	759,687	14,377,321	9,737,147	31,273,211	21.56	1.85	11.64	3.62
Promethazine (Tablet Only)										
0 to 5 Months	115	117	433	1,305	3,662,644	1,589,292	3.77	1.02	3.70	0.03
6 to 11 Months	316	335	1,195	3,668	3,587,212	1,697,810	3.78	1.06	3.57	0.09
12 to 23 Months	1,036	1,186	4,341	11,424	4,444,514	3,527,210	4.19	1.14	3.66	0.23
2 to 4 Years	9,757	12,377	44,361	3,040,865	7,402,184	11,291,676	4.55	1.27	3.58	1.32
5 to 9 Years	56,321	75,758	343,969	11,753,681	10,477,293	19,855,060	6.11	1.35	4.54	5.38
10 to 17 Years	375,661	566,263	2,758,212	15,699,976	15,005,187	33,943,372	7.34	1.51	4.87	25.04
18 to 44 Years	2,219,155	4,406,446	31,744,244	124,396,474	54,077,095	116,008,745	14.30	1.99	7.20	41.04
45 to 64 Years	1,282,965	3,074,687	31,167,486	109,352,023	31,931,924	86,087,673	24.29	2.40	10.14	40.18
65+ Years	384,520	894,665	9,793,014	28,917,706	9,737,147	31,273,211	25.47	2.33	10.95	39.49
Promethazine/Codeine and Promethazine/Phenylephrine/Codeine										
0 to 5 Months	268	286	6,558	39,202	3,662,644	1,589,292	24.47	1.07	22.93	0.07
6 to 11 Months	1,680	1,799	55,480	251,192	3,587,212	1,697,810	33.02	1.07	30.84	0.47
12 to 23 Months	8,875	9,941	304,328	1,415,645	4,444,514	3,527,210	34.29	1.12	30.61	2.00
2 to 4 Years	69,419	88,458	2,063,075	12,695,466	7,402,184	11,291,676	29.72	1.27	23.32	9.38
5 to 9 Years	125,365	161,212	2,889,368	25,005,396	10,477,293	19,855,060	23.05	1.29	17.92	11.97
10 to 17 Years	223,235	282,112	3,622,912	48,350,886	15,005,187	33,943,372	16.23	1.26	12.84	14.88
18 to 44 Years	1,367,453	1,897,675	19,002,539	355,818,661	54,077,095	116,008,745	13.90	1.39	10.01	25.29
45 to 64 Years	1,139,677	1,939,825	19,620,482	382,361,914	31,931,924	86,087,673	17.22	1.70	10.11	35.69
65+ Years	285,354	570,775	6,629,049	119,186,410	9,737,147	31,273,211	23.23	2.00	11.61	29.31

Table 2b. Number of Incident Users, Dispensings, Days Supplied, Amount Supplied, Eligible Members, Member-Years, Days Supplied per User, Dispensings per User, Days Supplied per Dispensing, and Number of Users per 1,000 Eligible Members by Drug Product and Age Group from January 1, 2000 to May 31, 2013

	New Users	Dispensings	Days Supplied	Amount Supplied	Eligible Members	Member-Years	Days Supplied per user	Dispensings per User	Days Supplied per Dispensing	1K Eligible Members
Promethazine (Liquid Only)										
0 to 5 Months	16	16	96	1,253	531,171	1,840	6.00	1.00	6.00	0.03
6 to 11 Months	4,093	4,146	39,135	395,640	2,780,844	1,255,937	9.56	1.01	9.44	1.47
12 to 23 Months	10,182	10,263	94,680	1,128,880	3,538,569	2,745,433	9.30	1.01	9.23	2.88
2 to 4 Years	56,233	56,541	420,261	6,127,621	6,000,192	8,903,735	7.47	1.01	7.43	9.37
5 to 9 Years	81,375	81,789	518,813	10,100,736	8,577,752	15,690,255	6.38	1.01	6.34	9.49
10 to 17 Years	35,344	35,485	236,169	5,440,048	12,438,283	27,248,480	6.68	1.00	6.66	2.84
18 to 44 Years	64,080	64,205	606,610	12,837,059	43,096,298	87,858,484	9.47	1.00	9.45	1.49
45 to 64 Years	56,293	56,352	584,529	11,643,879	27,160,322	70,507,443	10.38	1.00	10.37	2.07
65+ Years	27,278	27,308	321,335	5,680,340	8,671,238	26,833,623	11.78	1.00	11.77	3.15
Promethazine (Tablet Only)										
0 to 5 Months	6	6	22	71	531,171	1,840	3.67	1.00	3.67	0.01
6 to 11 Months	274	275	980	2,992	2,780,844	1,255,937	3.58	1.00	3.56	0.10
12 to 23 Months	873	884	3,232	8,070	3,540,787	2,748,314	3.70	1.01	3.66	0.25
2 to 4 Years	8,300	8,404	29,701	1,715,039	6,009,594	8,963,867	3.58	1.01	3.53	1.38
5 to 9 Years	45,332	45,754	197,083	3,358,754	8,620,658	15,882,301	4.35	1.01	4.31	5.26
10 to 17 Years	301,647	302,872	1,348,909	8,001,654	12,471,673	27,067,435	4.47	1.00	4.45	24.19
18 to 44 Years	1,624,315	1,627,672	8,637,516	35,473,893	42,956,479	85,118,175	5.32	1.00	5.31	37.81
45 to 64 Years	998,277	999,518	6,072,090	22,817,271	27,018,951	68,652,665	6.08	1.00	6.08	36.95
65+ Years	305,345	305,944	2,117,237	7,354,435	8,609,311	26,208,878	6.93	1.00	6.92	35.47
Promethazine/Codeine and Promethazine/Phenylephrine/Codeine										
0 to 5 Months	7	7	87	1,260	531,171	1,840	12.43	1.00	12.43	0.01
6 to 11 Months	1,162	1,168	32,872	161,997	2,780,844	1,255,936	28.29	1.01	28.14	0.42
12 to 23 Months	6,473	6,487	194,758	923,531	3,540,303	2,747,561	30.09	1.00	30.02	1.83
2 to 4 Years	50,696	50,748	1,174,403	7,152,459	6,005,275	8,924,359	23.17	1.00	23.14	8.44
5 to 9 Years	90,172	90,260	1,597,252	13,687,472	8,585,079	15,684,573	17.71	1.00	17.70	10.50
10 to 17 Years	170,928	171,019	2,201,802	28,827,318	12,424,785	26,971,459	12.88	1.00	12.87	13.76
18 to 44 Years	1,019,207	1,019,509	10,300,697	187,179,132	43,026,128	85,972,802	10.11	1.00	10.10	23.69
45 to 64 Years	902,290	902,453	9,157,809	170,161,947	27,013,327	68,229,014	10.15	1.00	10.15	33.40
65+ Years	232,408	232,447	2,642,156	45,675,812	8,580,377	25,900,271	11.37	1.00	11.37	27.09

Table 3a. Number of Prevalent Users, Dispensings, Days Supplied, Amount Supplied, Eligible Members, Member-Years, Days Supplied per User, Dispensings per User, Days Supplied per Dispensing, and Number of Users per 1,000 Eligible Members by Drug Product and Sex from January 1, 2000 to May 31, 2013

	Users	Dispensings	Days Supplied	Amount Supplied	Eligible Members	Member-Years	Days Supplied per user	Dispensings per User	Days Supplied per Dispensing	Users per 1K Eligible Members
<i>Promethazine (Liquid Only)</i>										
Female	251,500	381,784	3,365,219	70,793,047	57,627,906	157,581,830	13.38	1.52	8.81	4.36
Male	178,357	256,702	2,137,240	42,869,744	56,171,047	148,087,657	11.98	1.44	8.33	3.18
Unknown	45	54	379	9,581	36,207	60,444	8.42	1.20	7.02	1.24
<i>Promethazine (Tablet Only)</i>										
Female	2,931,160	6,829,990	58,311,802	221,553,960	57,627,906	157,581,830	19.89	2.33	8.54	50.86
Male	1,273,776	2,200,247	17,532,837	71,577,297	56,171,047	148,087,657	13.76	1.73	7.97	22.68
Unknown	967	1,597	12,616	45,865	36,207	60,444	13.05	1.65	7.90	26.71
Promethazine/Codeine and Promethazine/Phenylephrine/Codeine										
Female	1,875,622	3,031,835	32,924,521	579,313,437	57,627,906	157,581,830	17.55	1.62	10.86	32.55
Male	1,264,528	1,919,576	21,263,147	365,692,344	56,171,047	148,087,657	16.82	1.52	11.08	22.51
Unknown	487	672	6,123	118,991	36,207	60,444	12.57	1.38	9.11	13.45

Table 3b. Number of Incident Users, Dispensings, Days, Supplied Amount Supplied, Eligible Members, Member-Years, Days Supplied per User, Dispensings per User, Days Supplied per Dispensing, and Number of Users per 1,000 Eligible Members by Drug Product and Sex from January 1, 2000 to May 31, 2013

	New Users	Dispensings	Days Supplied	Amount Supplied	Eligible Members	Member-Years	Days Supplied per user	Dispensings per User	Days Supplied per Dispensing	New Users per 1K Eligible Members
<i>Promethazine (Liquid Only)</i>										
Female	193,407	194,054	1,672,494	31,868,914	47,600,430	124,050,694	8.65	1.00	8.62	4.06
Male	141,453	142,017	1,148,908	21,480,974	45,980,560	117,278,810	8.12	1.00	8.09	3.08
Unknown	34	34	226	5,568	20,904	42,793	6.65	1.00	6.65	1.63
<i>Promethazine (Tablet Only)</i>										
Female	2,276,606	2,281,682	13,023,763	53,000,034	47,600,430	120,321,492	5.72	1.00	5.71	47.83
Male	1,007,022	1,008,905	5,378,997	25,716,263	45,980,560	115,864,161	5.34	1.00	5.33	21.90
Unknown	741	742	4,010	15,882	20,904	41,470	5.41	1.00	5.40	35.45
Promethazine/Codeine and Promethazine/Phenylephrine/Codeine										
Female	1,471,003	1,471,472	16,103,255	269,449,556	47,600,430	120,846,082	10.95	1.00	10.94	30.90
Male	1,001,967	1,002,253	11,195,001	184,256,528	45,980,560	115,125,678	11.17	1.00	11.17	21.79
Unknown	373	373	3,580	64,844	20,904	42,058	9.60	1.00	9.60	17.84

Table 4a. Number of Prevalent Users, Dispensings, Days Supplied, Amount Supplied, Eligible Members, Member-Years, Days Supplied per User, Dispensings per User, Days Supplied per Dispensing, and Number of Users per 1,000 Eligible Members by Drug Product and Year from January 1, 2000 to May 31, 2013

	Users	Dispensings	Days Supplied	Amount Supplied	Eligible Members	Member-Years	Days Supplied per user	Dispensings per User	Days Supplied per Dispensing	Users per 1K Eligible Members
<i>Promethazine (Liquid Only)</i>										
2000	29,179	39,661	405,749	6,167,678	8,716,758	7,435,296	13.91	1.36	10.23	3.35
2001	31,267	42,127	486,953	6,545,811	8,584,003	7,427,847	15.57	1.35	11.56	3.64
2002	29,082	38,366	450,478	6,313,593	8,674,100	7,523,475	15.49	1.32	11.74	3.35
2003	29,494	39,120	429,879	6,649,210	8,566,884	7,418,453	14.58	1.33	10.99	3.44
2004	17,852	23,276	207,332	5,327,654	9,292,592	7,970,052	11.61	1.30	8.91	1.92
2005	23,951	30,674	225,138	5,516,757	9,614,097	8,207,440	9.40	1.28	7.34	2.49
2006	33,132	39,145	297,877	7,183,251	23,539,707	19,335,404	8.99	1.18	7.61	1.41
2007	34,686	41,072	304,574	7,476,601	26,924,933	21,175,128	8.78	1.18	7.42	1.29
2008	64,827	76,820	580,250	13,889,947	54,046,721	43,343,517	8.95	1.19	7.55	1.20
2009	62,510	73,567	573,728	13,312,010	52,331,527	42,651,435	9.18	1.18	7.80	1.19
2010	53,902	64,183	499,898	11,613,035	50,469,209	41,193,439	9.27	1.19	7.79	1.07
2011	51,697	61,939	489,036	11,096,826	49,154,476	40,405,351	9.46	1.20	7.90	1.05
2012	43,986	52,458	413,353	9,491,377	47,918,338	38,913,017	9.40	1.19	7.88	0.92
2013	14,436	16,132	138,593	3,088,622	39,105,374	12,730,077	9.60	1.12	8.59	0.37
<i>Promethazine (Tablet Only)</i>										
2000	132,325	270,958	2,206,188	7,335,362	8,716,758	7,435,296	16.67	2.05	8.14	15.18
2001	149,213	312,383	2,622,198	8,452,049	8,584,003	7,427,847	17.57	2.09	8.39	17.38
2002	168,897	353,861	3,078,113	9,769,295	8,674,100	7,523,475	18.22	2.10	8.70	19.47
2003	179,054	380,392	3,428,211	10,855,515	8,566,884	7,418,453	19.15	2.12	9.01	20.90
2004	154,437	322,047	3,486,855	17,913,067	9,292,592	7,970,052	22.58	2.09	10.83	16.62
2005	205,161	404,883	3,721,151	11,941,519	9,614,097	8,207,440	18.14	1.97	9.19	21.34
2006	357,476	538,017	4,476,822	15,988,381	23,539,707	19,335,404	12.52	1.51	8.32	15.19
2007	411,102	627,474	5,112,123	37,659,445	26,924,933	21,175,128	12.44	1.53	8.15	15.27
2008	814,088	1,202,458	9,444,620	39,293,196	54,046,721	43,343,517	11.60	1.48	7.85	15.06
2009	814,787	1,209,371	9,723,506	34,138,806	52,331,527	42,651,435	11.93	1.48	8.04	15.57
2010	770,052	1,158,460	9,560,244	33,497,321	50,469,209	41,193,439	12.42	1.50	8.25	15.26
2011	714,411	1,092,458	9,282,627	32,437,410	49,154,476	40,405,351	12.99	1.53	8.50	14.53
2012	607,847	909,487	7,604,835	26,505,041	47,918,338	38,913,017	12.51	1.50	8.36	12.69
2013	197,179	249,585	2,109,762	7,390,715	39,105,374	12,730,077	10.70	1.27	8.45	5.04

Table 4a. Number of Prevalent Users, Dispensings, Days Supplied, Amount Supplied, Eligible Members, Member-Years, Days Supplied per User, Dispensings per User, Days Supplied per Dispensing, and Number of Users per 1,000 Eligible Members by Drug Product and Year from January 1, 2000 to May 31, 2013

	Users	Dispensings	Days Supplied	Amount Supplied	Eligible Members	Member-Years	Days Supplied per user	Dispensings per User	Days Supplied per Dispensing	Users per 1K Eligible Members
Promethazine/Codeine and Promethazine/Phenylephrine/Codeine										
2000	137,246	176,572	3,944,849	35,971,464	8,716,758	7,435,296	28.74	1.29	22.34	15.75
2001	144,548	185,272	3,911,510	37,988,155	8,584,003	7,427,847	27.06	1.28	21.11	16.84
2002	140,222	180,276	3,710,138	37,249,355	8,674,100	7,523,475	26.46	1.29	20.58	16.17
2003	156,898	200,839	3,824,302	41,846,316	8,566,884	7,418,453	24.37	1.28	19.04	18.31
2004	136,290	176,891	1,958,359	37,115,885	9,292,592	7,970,052	14.37	1.30	11.07	14.67
2005	169,119	216,395	2,332,402	45,923,252	9,614,097	8,207,440	13.79	1.28	10.78	17.59
2006	270,746	340,234	3,322,347	69,363,032	23,539,707	19,335,404	12.27	1.26	9.76	11.50
2007	224,507	280,339	2,591,912	55,348,855	26,924,933	21,175,128	11.54	1.25	9.25	8.34
2008	568,930	699,818	6,168,526	130,057,220	54,046,721	43,343,517	10.84	1.23	8.81	10.53
2009	583,929	723,007	6,381,690	133,451,063	52,331,527	42,651,435	10.93	1.24	8.83	11.16
2010	448,107	557,013	5,004,879	102,243,290	50,469,209	41,193,439	11.17	1.24	8.99	8.88
2011	434,602	536,320	4,868,213	97,137,373	49,154,476	40,405,351	11.20	1.23	9.08	8.84
2012	370,165	454,376	4,144,486	81,462,485	47,918,338	38,913,017	11.20	1.23	9.12	7.72
2013	198,590	224,731	2,030,178	39,967,027	39,105,374	12,730,077	10.22	1.13	9.03	5.08

Table 4b. Number of Incident Users, Dispensings, Days Supplied, Amount Supplied, Eligible Members, Member-Years, Days Supplied per User, Dispensings per User, Days Supplied per Dispensing, and Number of New Users per 1,000 Eligible Members by Drug Product and Year from January 1, 2000 to May 31, 2013

	New Users	Dispensings	Days Supplied	Amount Supplied	Eligible Members	Member-Years	Days Supplied per user	Dispensings per User	Days Supplied per Dispensing	1K Eligible Members
<i>Promethazine (Liquid Only)</i>										
2000	11,096	11,134	135,950	1,631,161	7,246,171	3,308,220	12.25	1.00	12.21	1.53
2001	23,929	24,041	295,942	3,510,101	7,815,175	6,502,403	12.37	1.00	12.31	3.06
2002	20,147	20,322	255,470	3,077,677	7,937,383	6,576,749	12.68	1.01	12.57	2.54
2003	19,013	19,099	222,181	2,908,889	7,862,772	6,506,049	11.69	1.00	11.63	2.42
2004	10,964	11,234	90,466	2,245,841	8,409,975	6,725,345	8.25	1.02	8.05	1.30
2005	14,872	15,089	101,967	2,371,931	8,661,671	7,057,175	6.86	1.01	6.76	1.72
2006	17,940	18,055	124,588	2,912,019	19,568,855	11,813,806	6.94	1.01	6.90	0.92
2007	23,592	23,661	165,553	3,878,670	23,360,021	16,881,630	7.02	1.00	7.00	1.01
2008	36,359	36,459	260,992	5,928,179	44,589,345	27,911,568	7.18	1.00	7.16	0.82
2009	44,694	44,714	333,344	7,276,592	46,447,572	35,839,820	7.46	1.00	7.46	0.96
2010	37,571	37,574	276,881	5,901,673	44,659,737	34,633,666	7.37	1.00	7.37	0.84
2011	35,572	35,577	264,498	5,575,212	43,503,580	34,108,219	7.44	1.00	7.43	0.82
2012	30,031	30,032	220,293	4,623,578	42,422,062	33,015,457	7.34	1.00	7.34	0.71
2013	9,114	9,114	73,503	1,513,933	32,508,435	10,492,190	8.06	1.00	8.06	0.28
<i>Promethazine (Tablet Only)</i>										
2000	52,227	52,370	291,988	1,050,590	7,246,171	3,308,220	5.59	1.00	5.58	7.21
2001	107,785	109,492	608,197	2,132,276	7,779,812	6,473,378	5.64	1.02	5.55	13.85
2002	104,505	104,960	598,375	2,055,455	7,832,237	6,495,126	5.73	1.00	5.70	13.34
2003	97,237	97,692	564,642	1,935,564	7,700,511	6,381,602	5.81	1.00	5.78	12.63
2004	77,469	78,293	539,154	2,637,486	8,189,303	6,551,334	6.96	1.01	6.89	9.46
2005	102,861	103,853	631,974	2,213,185	8,411,189	6,866,783	6.14	1.01	6.09	12.23
2006	166,986	167,694	1,022,222	3,831,736	19,336,252	11,630,078	6.12	1.00	6.10	8.64
2007	246,183	247,009	1,398,822	12,755,178	23,030,052	16,609,668	5.68	1.00	5.66	10.69
2008	423,581	423,931	2,319,447	10,718,111	44,111,426	27,518,769	5.48	1.00	5.47	9.60
2009	544,463	544,611	3,005,881	11,177,132	45,735,610	35,260,141	5.52	1.00	5.52	11.90
2010	482,889	483,001	2,620,965	9,913,403	43,691,311	33,839,854	5.43	1.00	5.43	11.05
2011	427,039	427,158	2,329,958	8,899,484	42,351,319	33,156,247	5.46	1.00	5.45	10.08
2012	349,475	349,577	1,913,393	7,272,805	41,170,074	31,970,749	5.48	1.00	5.47	8.49
2013	101,669	101,688	561,752	2,139,774	31,473,648	10,165,175	5.53	1.00	5.52	3.23

Table 4b. Number of Incident Users, Dispensings, Days Supplied, Amount Supplied, Eligible Members, Member-Years, Days Supplied per User, Dispensings per User, Days Supplied per Dispensing, and Number of New Users per 1,000 Eligible Members by Drug Product and Year from January 1, 2000 to May 31, 2013

	New Users	Dispensings	Days Supplied	Amount Supplied	Eligible Members	Member-Years	Days Supplied per user	Dispensings per User	Days Supplied per Dispensing	1K Eligible Members
Promethazine/Codeine and Promethazine/Phenylephrine/Codeine										
2000	55,868	55,897	1,234,937	11,267,904	7,246,171	3,308,220	22.10	1.00	22.09	7.71
2001	117,968	118,000	2,543,551	23,699,307	7,774,689	6,462,573	21.56	1.00	21.56	15.17
2002	101,144	101,214	2,141,850	20,287,107	7,813,810	6,465,108	21.18	1.00	21.16	12.94
2003	107,092	107,140	2,097,399	21,668,730	7,674,167	6,336,604	19.59	1.00	19.58	13.95
2004	82,373	82,437	944,116	16,648,555	8,157,578	6,503,699	11.46	1.00	11.45	10.10
2005	103,719	103,809	1,135,614	21,019,311	8,362,026	6,789,541	10.95	1.00	10.94	12.40
2006	128,208	128,295	1,284,994	25,413,465	19,205,517	11,493,810	10.02	1.00	10.02	6.68
2007	145,963	146,025	1,345,339	27,210,110	22,924,439	16,488,662	9.22	1.00	9.21	6.37
2008	284,292	284,392	2,501,431	51,356,353	44,082,832	27,443,425	8.80	1.00	8.80	6.45
2009	420,707	420,797	3,711,797	74,566,594	45,788,411	35,246,689	8.82	1.00	8.82	9.19
2010	296,090	296,125	2,657,133	51,983,612	43,784,675	33,879,176	8.97	1.00	8.97	6.76
2011	280,401	280,420	2,540,179	48,707,269	42,547,606	33,265,066	9.06	1.00	9.06	6.59
2012	233,819	233,840	2,118,418	40,042,303	41,415,869	32,133,762	9.06	1.00	9.06	5.65
2013	115,699	115,707	1,045,078	19,900,308	31,525,915	10,197,482	9.03	1.00	9.03	3.67

Figure 1a. Prevalent Promethazine Use in the Mini-Sentinel Distributed Database (MSDD) between January 1, 2000 and May 31, 2013, by Drug Product and Year

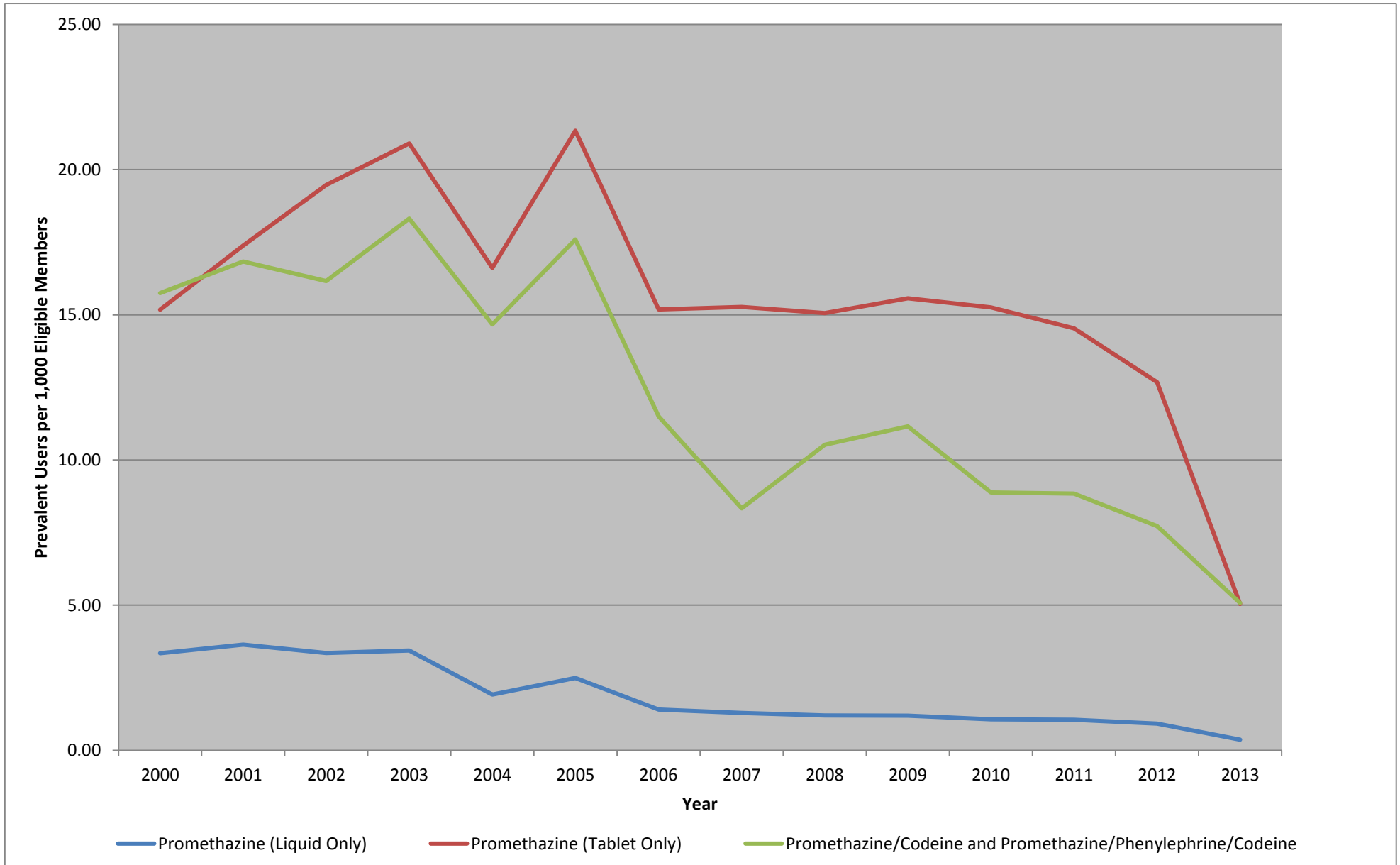


Figure 1b. Incident Promethazine Use in the Mini-Sentinel Distributed Database (MSDD) between January 1, 2000 and May 31, 2013, by Drug Product and Year

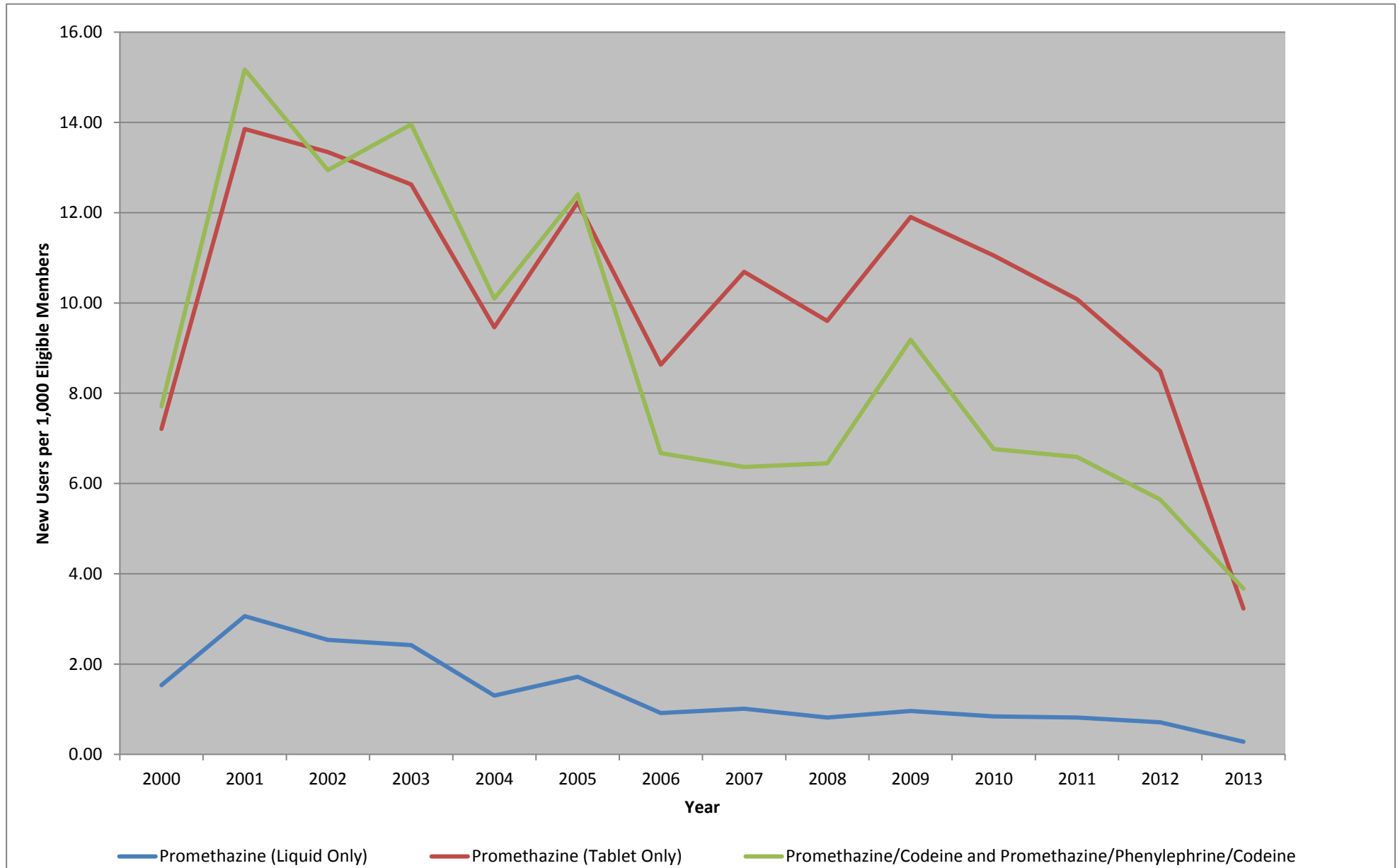


Table 5a. Summary of Prevalent Promethazine Use in the Mini-Sentinel Distributed Database (MSDD) between January 1, 2000 and May 31, 2013, by Drug Product, Age Group, and Year

	Users*	Dispensings	Days Supplied	Amount Supplied	Eligible Members**	Member-Years**	Days Supplied per user	Dispensings per User	Days Supplied per Dispensing	Users per 1K Eligible Members
Promethazine (Liquid Only)										
0 to 5 Months	1,505	1,639	16,393	138,036	3,662,644	1,589,292	10.89	1.09	10.00	0.41
2000	279	311	2,925	27,311			10.48	1.11	9.41	
2001	303	330	3,629	26,177			11.98	1.09	11.00	
2002	261	278	2,748	22,515			10.53	1.07	9.88	
2003	249	271	2,651	20,456			10.65	1.09	9.78	
2004	167	181	1,985	16,686			11.89	1.08	10.97	
2005	114	117	1,009	10,886			8.85	1.03	8.62	
2006	44	49	554	4,610			12.59	1.11	11.31	
2007	15	15	125	1,161			8.33	1.00	8.33	
2008	26	26	290	3,343			11.15	1.00	11.15	
2009	24	24	180	1,825			7.50	1.00	7.50	
2010	16	16	108	1,218			6.75	1.00	6.75	
2011	13	13	107	1,090			8.23	1.00	8.23	
2012	5	5	59	488			11.80	1.00	11.80	
2013	3	3	23	270			7.67	1.00	7.67	
6 to 11 Months	5,231	5,833	57,516	563,990	3,587,212	1,697,810	11.00	1.12	9.86	1.46
2000	800	897	9,270	91,253			11.59	1.12	10.33	
2001	866	960	9,329	91,524			10.77	1.11	9.72	
2002	853	944	10,943	90,719			12.83	1.11	11.59	
2003	874	976	9,608	91,659			10.99	1.12	9.84	
2004	604	661	6,927	71,533			11.47	1.09	10.48	
2005	512	548	4,474	54,279			8.74	1.07	8.16	
2006	231	246	1,961	21,340			8.49	1.06	7.97	
2007	140	144	1,049	12,030			7.49	1.03	7.28	
2008	156	159	1,296	14,520			8.31	1.02	8.15	
2009	104	107	920	9,753			8.85	1.03	8.60	
2010	80	82	792	7,260			9.90	1.03	9.66	
2011	66	66	555	4,935			8.41	1.00	8.41	
2012	29	29	254	2,217			8.76	1.00	8.76	
2013	13	14	138	968			10.62	1.08	9.86	

	Users*	Dispensings	Days Supplied	Amount Supplied	Eligible Members**	Member-Years**	Days Supplied per user	Dispensings per User	Days Supplied per Dispensing	Users per 1K Eligible Members
12 to 23 Months	13,281	15,059	139,463	1,655,368	4,444,514	3,527,210	10.50	1.13	9.26	2.99
2000	1,643	1,914	18,395	213,555			11.20	1.16	9.61	
2001	1,827	2,073	23,372	224,942			12.79	1.13	11.27	
2002	1,955	2,194	22,768	238,300			11.65	1.12	10.38	
2003	1,873	2,078	19,844	218,139			10.59	1.11	9.55	
2004	1,143	1,254	11,733	216,919			10.27	1.10	9.36	
2005	1,148	1,245	9,584	131,287			8.35	1.08	7.70	
2006	792	856	6,425	85,681			8.11	1.08	7.51	
2007	574	612	4,410	60,157			7.68	1.07	7.21	
2008	827	851	7,018	82,473			8.49	1.03	8.25	
2009	634	648	4,985	60,028			7.86	1.02	7.69	
2010	600	623	4,905	59,199			8.18	1.04	7.87	
2011	404	420	3,525	39,161			8.73	1.04	8.39	
2012	215	217	1,984	19,236			9.23	1.01	9.14	
2013	72	74	515	6,291			7.15	1.03	6.96	
2 to 4 Years	71,668	87,302	659,038	9,644,989	7,402,184	11,291,676	9.20	1.22	7.55	9.68
2000	4,479	5,507	47,976	596,579			10.71	1.23	8.71	
2001	4,994	6,102	53,623	622,647			10.74	1.22	8.79	
2002	4,860	5,648	49,528	649,071			10.19	1.16	8.77	
2003	5,346	6,053	52,160	691,124			9.76	1.13	8.62	
2004	3,086	3,471	28,120	523,871			9.11	1.12	8.10	
2005	4,637	5,213	34,801	600,388			7.51	1.12	6.68	
2006	6,048	6,686	47,579	770,347			7.87	1.11	7.12	
2007	5,959	6,478	44,751	719,281			7.51	1.09	6.91	
2008	9,085	9,829	69,604	1,064,624			7.66	1.08	7.08	
2009	8,784	9,423	72,145	1,013,367			8.21	1.07	7.66	
2010	7,637	8,143	57,898	891,586			7.58	1.07	7.11	
2011	7,027	7,533	52,308	767,990			7.44	1.07	6.94	
2012	5,584	5,935	39,429	600,404			7.06	1.06	6.64	
2013	1,246	1,281	9,116	133,710			7.32	1.03	7.12	

	Users*	Dispensings	Days Supplied	Amount Supplied	Eligible Members**	Member-Years**	Days Supplied per user	Dispensings per User	Days Supplied per Dispensing	Users per 1K Eligible Members
5 to 9 Years	110,516	140,694	909,672	17,710,853	10,477,293	19,855,060	8.23	1.27	6.47	10.55
2000	6,304	7,828	56,502	932,772			8.96	1.24	7.22	
2001	6,859	8,399	63,143	949,854			9.21	1.22	7.52	
2002	6,317	7,295	56,162	953,618			8.89	1.15	7.70	
2003	6,619	7,669	56,339	1,034,731			8.51	1.16	7.35	
2004	3,559	4,075	29,056	776,622			8.16	1.14	7.13	
2005	6,362	7,350	44,272	956,308			6.96	1.16	6.02	
2006	8,629	9,584	60,877	1,290,653			7.05	1.11	6.35	
2007	9,225	10,131	62,832	1,348,157			6.81	1.10	6.20	
2008	14,816	16,041	100,079	2,007,439			6.75	1.08	6.24	
2009	15,589	16,851	106,749	2,085,373			6.85	1.08	6.33	
2010	13,929	15,071	92,190	1,776,276			6.62	1.08	6.12	
2011	13,122	14,305	87,035	1,706,505			6.63	1.09	6.08	
2012	12,314	13,524	78,715	1,583,860			6.39	1.10	5.82	
2013	2,470	2,571	15,721	308,685			6.36	1.04	6.11	
10 to 17 Years	50,519	62,778	423,552	9,936,528	15,005,187	33,943,372	8.38	1.24	6.75	3.37
2000	2,852	3,462	27,375	471,186			9.60	1.21	7.91	
2001	3,249	3,875	30,881	543,145			9.50	1.19	7.97	
2002	3,096	3,651	28,128	568,761			9.09	1.18	7.70	
2003	3,314	3,846	29,726	626,832			8.97	1.16	7.73	
2004	1,607	1,865	13,901	388,281			8.65	1.16	7.45	
2005	2,631	3,038	18,210	490,208			6.92	1.15	5.99	
2006	3,724	4,107	26,883	679,994			7.22	1.10	6.55	
2007	3,980	4,385	28,122	709,392			7.07	1.10	6.41	
2008	6,667	7,259	45,700	1,140,016			6.85	1.09	6.30	
2009	7,302	7,959	51,201	1,249,357			7.01	1.09	6.43	
2010	5,920	6,403	40,354	1,009,347			6.82	1.08	6.30	
2011	5,739	6,276	40,456	1,009,950			7.05	1.09	6.45	
2012	4,892	5,373	33,506	846,039			6.85	1.10	6.24	
2013	1,204	1,279	9,109	204,020			7.57	1.06	7.12	

	Users*	Dispensings	Days Supplied	Amount Supplied	Eligible Members**	Member-Years**	Days Supplied per user	Dispensings per User	Days Supplied per Dispensing	Users per 1K Eligible Members
18 to 44 Years	92,232	130,755	1,211,314	28,844,715	54,077,095	116,008,745	13.13	1.42	9.26	1.71
2000	5,754	7,745	87,650	1,417,760			15.23	1.35	11.32	
2001	5,951	8,092	107,046	1,493,708			17.99	1.36	13.23	
2002	5,291	7,312	99,893	1,407,825			18.88	1.38	13.66	
2003	5,021	7,255	85,808	1,470,863			17.09	1.44	11.83	
2004	3,152	4,371	36,623	1,119,098			11.62	1.39	8.38	
2005	3,779	5,121	38,461	1,201,193			10.18	1.36	7.51	
2006	6,225	7,330	59,122	1,719,866			9.50	1.18	8.07	
2007	6,254	7,542	58,059	1,672,030			9.28	1.21	7.70	
2008	14,396	17,089	131,800	3,752,597			9.16	1.19	7.71	
2009	13,407	15,902	130,677	3,627,647			9.75	1.19	8.22	
2010	10,702	13,160	111,310	3,062,497			10.40	1.23	8.46	
2011	10,892	13,383	116,487	3,037,965			10.69	1.23	8.70	
2012	9,577	11,920	106,277	2,845,990			11.10	1.24	8.92	
2013	4,029	4,533	42,101	1,015,676			10.45	1.13	9.29	
45 to 64 Years	75,782	129,225	1,326,203	30,800,572	31,931,924	86,087,673	17.50	1.71	10.26	2.37
2000	4,807	7,696	94,713	1,534,730			19.70	1.60	12.31	
2001	4,888	7,874	116,478	1,642,226			23.83	1.61	14.79	
2002	4,318	6,974	102,381	1,474,855			23.71	1.62	14.68	
2003	4,200	7,066	100,939	1,615,861			24.03	1.68	14.29	
2004	2,916	4,604	46,753	1,495,526			16.03	1.58	10.15	
2005	3,219	5,158	46,648	1,379,077			14.49	1.60	9.04	
2006	5,102	6,723	61,178	1,796,230			11.99	1.32	9.10	
2007	5,571	7,372	63,562	1,962,184			11.41	1.32	8.62	
2008	13,235	17,392	149,261	4,064,833			11.28	1.31	8.58	
2009	11,700	15,521	140,200	3,742,522			11.98	1.33	9.03	
2010	9,840	13,267	121,872	3,196,223			12.39	1.35	9.19	
2011	9,825	13,360	125,209	3,126,834			12.74	1.36	9.37	
2012	8,447	11,291	109,456	2,654,852			12.96	1.34	9.69	
2013	4,189	4,927	47,553	1,114,619			11.35	1.18	9.65	

	Users*	Dispensings	Days Supplied	Amount Supplied	Eligible Members**	Member-Years**	Days Supplied per user	Dispensings per User	Days Supplied per Dispensing	Users per 1K Eligible Members
65+ Years	35,228	65,255	759,687	14,377,321	9,737,147	31,273,211	21.56	1.85	11.64	3.62
2000	2,642	4,301	60,943	882,532			23.07	1.63	14.17	
2001	2,729	4,422	79,452	951,588			29.11	1.62	17.97	
2002	2,475	4,070	77,927	907,929			31.49	1.64	19.15	
2003	2,358	3,906	72,804	879,545			30.88	1.66	18.64	
2004	1,767	2,794	32,234	719,118			18.24	1.58	11.54	
2005	1,748	2,884	27,679	693,131			15.83	1.65	9.60	
2006	2,502	3,564	33,298	814,530			13.31	1.42	9.34	
2007	3,091	4,393	41,664	992,209			13.48	1.42	9.48	
2008	5,854	8,174	75,202	1,760,102			12.85	1.40	9.20	
2009	5,147	7,132	66,671	1,522,138			12.95	1.39	9.35	
2010	5,373	7,418	70,469	1,609,429			13.12	1.38	9.50	
2011	4,772	6,583	63,354	1,402,396			13.28	1.38	9.62	
2012	3,064	4,164	43,673	938,291			14.25	1.36	10.49	
2013	1,222	1,450	14,317	304,383			11.72	1.19	9.87	
Promethazine (Tablet Only)										
0 to 5 Months	115	117	433	1,305	3,662,644	1,589,292	3.77	1.02	3.70	0.03
2000	1	1	3	6			3.00	1.00	3.00	
2001	5	5	31	101			6.20	1.00	6.20	
2002	5	5	15	49			3.00	1.00	3.00	
2003	6	6	12	46			2.00	1.00	2.00	
2004	14	14	49	115			3.50	1.00	3.50	
2005	32	32	92	261			2.88	1.00	2.88	
2006	12	12	40	132			3.33	1.00	3.33	
2007	9	9	38	78			4.22	1.00	4.22	
2008	15	15	42	200			2.80	1.00	2.80	
2009	5	5	28	94			5.60	1.00	5.60	
2010	6	6	29	127			4.83	1.00	4.83	
2011	4	4	37	42			9.25	1.00	9.25	
2012	2	2	7	24			3.50	1.00	3.50	
2013	1	1	10	30			10.00	1.00	10.00	

	Users*	Dispensings	Days Supplied	Amount Supplied	Eligible Members**	Member-Years**	Days Supplied per user	Dispensings per User	Days Supplied per Dispensing	Users per 1K Eligible Members
6 to 11 Months	316	335	1,195	3,668	3,587,212	1,697,810	3.78	1.06	3.57	0.09
2000	10	10	20	129			2.00	1.00	2.00	
2001	11	11	29	137			2.64	1.00	2.64	
2002	14	14	43	154			3.07	1.00	3.07	
2003	26	27	88	475			3.38	1.04	3.26	
2004	33	33	138	423			4.18	1.00	4.18	
2005	83	90	282	768			3.40	1.08	3.13	
2006	27	30	117	256			4.33	1.11	3.90	
2007	32	32	142	386			4.44	1.00	4.44	
2008	29	31	124	382			4.28	1.07	4.00	
2009	16	16	61	138			3.81	1.00	3.81	
2010	14	16	55	142			3.93	1.14	3.44	
2011	17	19	60	172			3.53	1.12	3.16	
2012	3	4	14	73			4.67	1.33	3.50	
2013	2	2	22	33			11.00	1.00	11.00	
12 to 23 Months	1,036	1,186	4,341	11,424	4,444,514	3,527,210	4.19	1.14	3.66	0.23
2000	44	44	212	703			4.82	1.00	4.82	
2001	43	47	158	585			3.67	1.09	3.36	
2002	34	37	243	701			7.15	1.09	6.57	
2003	66	68	312	758			4.73	1.03	4.59	
2004	87	93	438	1,112			5.03	1.07	4.71	
2005	215	242	801	2,357			3.73	1.13	3.31	
2006	109	128	488	1,108			4.48	1.17	3.81	
2007	86	110	353	787			4.10	1.28	3.21	
2008	119	133	467	1,212			3.92	1.12	3.51	
2009	83	101	328	1,042			3.95	1.22	3.25	
2010	64	72	181	279			2.83	1.13	2.51	
2011	84	89	279	595			3.32	1.06	3.13	
2012	18	19	71	148			3.94	1.06	3.74	
2013	3	3	10	37			3.33	1.00	3.33	

	Users*	Dispensings	Days Supplied	Amount Supplied	Eligible Members**	Member-Years**	Days Supplied per user	Dispensings per User	Days Supplied per Dispensing	Users per 1K Eligible Members
2 to 4 Years	9,757	12,377	44,361	3,040,865	7,402,184	11,291,676	4.55	1.27	3.58	1.32
2000	173	182	909	2,675			5.25	1.05	4.99	
2001	201	211	982	2,628			4.89	1.05	4.65	
2002	264	285	1,202	3,107			4.55	1.08	4.22	
2003	315	351	1,348	3,509			4.28	1.11	3.84	
2004	287	318	1,427	3,517			4.97	1.11	4.49	
2005	705	824	2,963	7,608			4.20	1.17	3.60	
2006	772	856	3,243	8,826			4.20	1.11	3.79	
2007	1,082	1,360	4,171	2,948,230			3.85	1.26	3.07	
2008	1,296	1,619	5,937	13,929			4.58	1.25	3.67	
2009	1,218	1,434	4,902	16,778			4.02	1.18	3.42	
2010	1,012	1,214	4,093	9,101			4.04	1.20	3.37	
2011	1,821	2,116	6,840	12,001			3.76	1.16	3.23	
2012	1,325	1,514	5,877	8,047			4.44	1.14	3.88	
2013	89	93	467	909			5.25	1.04	5.02	
5 to 9 Years	56,321	75,758	343,969	11,753,681	10,477,293	19,855,060	6.11	1.35	4.54	5.38
2000	1,959	2,303	10,621	34,668			5.42	1.18	4.61	
2001	2,361	2,774	12,640	40,319			5.35	1.17	4.56	
2002	2,568	3,026	13,862	40,771			5.40	1.18	4.58	
2003	2,960	3,468	15,567	46,957			5.26	1.17	4.49	
2004	1,661	1,994	11,843	69,713			7.13	1.20	5.94	
2005	3,399	4,131	18,992	52,891			5.59	1.22	4.60	
2006	4,834	5,623	26,950	74,224			5.58	1.16	4.79	
2007	5,511	6,802	29,482	7,830,623			5.35	1.23	4.33	
2008	8,253	9,863	44,324	3,125,807			5.37	1.20	4.49	
2009	7,962	9,434	43,676	123,883			5.49	1.18	4.63	
2010	7,154	8,436	38,634	101,945			5.40	1.18	4.58	
2011	7,925	9,429	39,225	107,887			4.95	1.19	4.16	
2012	6,528	7,562	33,178	89,450			5.08	1.16	4.39	
2013	883	913	4,975	14,543			5.63	1.03	5.45	

	Users*	Dispensings	Days Supplied	Amount Supplied	Eligible Members**	Member-Years**	Days Supplied per user	Dispensings per User	Days Supplied per Dispensing	Users per 1K Eligible Members
10 to 17 Years	375,661	566,263	2,758,212	15,699,976	15,005,187	33,943,372	7.34	1.51	4.87	25.04
2000	12,657	16,588	76,311	281,792			6.03	1.31	4.60	
2001	14,455	19,145	86,568	317,441			5.99	1.32	4.52	
2002	16,447	21,321	99,717	349,580			6.06	1.30	4.68	
2003	18,058	23,341	109,565	383,455			6.07	1.29	4.69	
2004	11,519	14,315	81,319	443,990			7.06	1.24	5.68	
2005	20,009	26,174	124,108	441,450			6.20	1.31	4.74	
2006	33,293	41,315	207,953	739,281			6.25	1.24	5.03	
2007	35,331	43,597	210,591	6,414,359			5.96	1.23	4.83	
2008	62,101	73,500	355,653	1,272,138			5.73	1.18	4.84	
2009	66,688	78,759	389,827	1,385,745			5.85	1.18	4.95	
2010	59,095	70,647	342,737	1,240,650			5.80	1.20	4.85	
2011	55,114	66,529	320,592	1,162,559			5.82	1.21	4.82	
2012	49,387	60,000	295,411	1,059,264			5.98	1.21	4.92	
2013	10,397	11,032	57,860	208,272			5.57	1.06	5.24	
18 to 44 Years	2,219,155	4,406,446	31,744,244	124,396,474	54,077,095	116,008,745	14.30	1.99	7.20	41.04
2000	71,086	135,697	940,722	3,458,922			13.23	1.91	6.93	
2001	79,088	154,082	1,109,497	3,918,311			14.03	1.95	7.20	
2002	88,120	172,120	1,281,975	4,451,679			14.55	1.95	7.45	
2003	90,780	179,743	1,379,040	4,856,300			15.19	1.98	7.67	
2004	77,369	146,712	1,358,350	8,656,222			17.56	1.90	9.26	
2005	103,625	189,002	1,487,894	5,256,071			14.36	1.82	7.87	
2006	197,509	290,982	2,146,870	8,021,104			10.87	1.47	7.38	
2007	215,971	318,176	2,269,612	11,540,763			10.51	1.47	7.13	
2008	429,257	601,584	4,111,036	17,076,297			9.58	1.40	6.83	
2009	420,409	589,618	4,075,227	14,893,124			9.69	1.40	6.91	
2010	389,378	549,822	3,846,481	14,098,720			9.88	1.41	7.00	
2011	355,780	507,573	3,613,464	13,228,301			10.16	1.43	7.12	
2012	317,056	451,877	3,256,900	11,800,105			10.27	1.43	7.21	
2013	97,782	119,458	867,176	3,140,555			8.87	1.22	7.26	

	Users*	Dispensings	Days Supplied	Amount Supplied	Eligible Members**	Member-Years**	Days Supplied per user	Dispensings per User	Days Supplied per Dispensing	Users per 1K Eligible Members
45 to 64 Years	1,282,965	3,074,687	31,167,486	109,352,023	31,931,924	86,087,673	24.29	2.40	10.14	40.18
2000	32,291	80,080	754,944	2,581,229			23.38	2.48	9.43	
2001	37,218	94,955	935,347	3,068,532			25.13	2.55	9.85	
2002	43,279	110,483	1,124,360	3,676,040			25.98	2.55	10.18	
2003	47,223	122,941	1,296,411	4,177,610			27.45	2.60	10.54	
2004	44,936	112,545	1,395,997	6,847,981			31.07	2.50	12.40	
2005	54,537	130,041	1,447,630	4,647,649			26.54	2.38	11.13	
2006	99,244	163,501	1,699,383	5,935,288			17.12	1.65	10.39	
2007	118,172	200,253	2,023,881	7,090,186			17.13	1.69	10.11	
2008	249,500	409,650	3,890,680	14,441,088			15.59	1.64	9.50	
2009	252,806	419,219	4,086,899	14,078,590			16.17	1.66	9.75	
2010	244,041	410,548	4,109,013	14,102,711			16.84	1.68	10.01	
2011	226,904	392,040	4,075,401	13,919,038			17.96	1.73	10.40	
2012	197,237	327,569	3,335,167	11,362,946			16.91	1.66	10.18	
2013	74,929	100,862	992,373	3,423,135			13.24	1.35	9.84	
65+ Years	384,520	894,665	9,793,014	28,917,706	9,737,147	31,273,211	25.47	2.33	10.95	39.49
2000	14,906	36,053	422,446	975,238			28.34	2.42	11.72	
2001	16,789	41,153	476,946	1,103,995			28.41	2.45	11.59	
2002	19,244	46,570	556,696	1,247,214			28.93	2.42	11.95	
2003	20,823	50,447	625,868	1,386,405			30.06	2.42	12.41	
2004	19,307	46,023	637,294	1,889,994			33.01	2.38	13.85	
2005	23,751	54,347	638,389	1,532,464			26.88	2.29	11.75	
2006	22,879	35,570	391,778	1,208,162			17.12	1.55	11.01	
2007	36,343	57,135	573,853	1,834,033			15.79	1.57	10.04	
2008	66,156	106,063	1,036,357	3,362,143			15.67	1.60	9.77	
2009	68,215	110,785	1,122,558	3,639,412			16.46	1.62	10.13	
2010	71,820	117,699	1,219,021	3,943,646			16.97	1.64	10.36	
2011	69,214	114,659	1,226,729	4,006,815			17.72	1.66	10.70	
2012	38,247	60,940	678,210	2,184,984			17.73	1.59	11.13	
2013	13,273	17,221	186,869	603,201			14.08	1.30	10.85	

	Users*	Dispensings	Days Supplied	Amount Supplied	Eligible Members**	Member-Years**	Days Supplied per user	Dispensings per User	Days Supplied per Dispensing	Users per 1K Eligible Members
Promethazine/Codeine and Promethazine/Phenylephrine/Codeine										
0 to 5 Months	268	286	6,558	39,202	3,662,644	1,589,292	24.47	1.07	22.93	0.07
2000	54	55	1,523	8,282			28.20	1.02	27.69	
2001	31	32	1,145	4,384			36.94	1.03	35.78	
2002	35	37	837	5,764			23.91	1.06	22.62	
2003	24	27	609	4,331			25.38	1.13	22.56	
2004	48	51	1,118	6,313			23.29	1.06	21.92	
2005	22	22	492	2,908			22.36	1.00	22.36	
2006	17	17	217	2,238			12.76	1.00	12.76	
2007	6	6	78	630			13.00	1.00	13.00	
2008	11	14	188	1,708			17.09	1.27	13.43	
2009	8	9	103	807			12.88	1.13	11.44	
2010	4	5	109	600			27.25	1.25	21.80	
2011	5	5	74	505			14.80	1.00	14.80	
2012	6	6	65	732			10.83	1.00	10.83	
2013	0	0	0	0			#DIV/0!	#DIV/0!	#DIV/0!	
6 to 11 Months	1,680	1,799	55,480	251,192	3,587,212	1,697,810	33.02	1.07	30.84	0.47
2000	257	279	13,095	42,011			50.95	1.09	46.94	
2001	259	278	9,753	41,871			37.66	1.07	35.08	
2002	236	249	8,706	35,970			36.89	1.06	34.96	
2003	213	223	7,390	35,174			34.69	1.05	33.14	
2004	310	326	8,599	44,787			27.74	1.05	26.38	
2005	158	164	3,602	20,017			22.80	1.04	21.96	
2006	63	66	959	7,233			15.22	1.05	14.53	
2007	26	27	458	3,195			17.62	1.04	16.96	
2008	62	64	970	7,125			15.65	1.03	15.16	
2009	39	40	695	4,059			17.82	1.03	17.38	
2010	30	31	478	3,670			15.93	1.03	15.42	
2011	25	26	404	3,050			16.16	1.04	15.54	
2012	18	20	285	2,070			15.83	1.11	14.25	
2013	6	6	86	960			14.33	1.00	14.33	

	Users*	Dispensings	Days Supplied	Amount Supplied	Eligible Members**	Member-Years**	Days Supplied per user	Dispensings per User	Days Supplied per Dispensing	Users per 1K Eligible Members
12 to 23 Months	8,875	9,941	304,328	1,415,645	4,444,514	3,527,210	34.29	1.12	30.61	2.00
2000	1,312	1,417	70,345	221,115			53.62	1.08	49.64	
2001	1,246	1,370	52,062	205,475			41.78	1.10	38.00	
2002	1,194	1,308	43,876	204,252			36.75	1.10	33.54	
2003	1,236	1,322	44,161	206,608			35.73	1.07	33.40	
2004	1,370	1,501	38,404	211,285			28.03	1.10	25.59	
2005	858	932	21,629	128,294			25.21	1.09	23.21	
2006	414	440	7,947	53,298			19.20	1.06	18.06	
2007	199	208	3,586	24,897			18.02	1.05	17.24	
2008	495	538	8,353	61,705			16.87	1.09	15.53	
2009	272	294	4,493	31,892			16.52	1.08	15.28	
2010	203	213	3,377	24,483			16.64	1.05	15.85	
2011	188	198	3,084	20,887			16.40	1.05	15.58	
2012	143	159	2,410	17,123			16.85	1.11	15.16	
2013	39	41	601	4,331			15.41	1.05	14.66	
2 to 4 Years	69,419	88,458	2,063,075	12,695,466	7,402,184	11,291,676	29.72	1.27	23.32	9.38
2000	5,964	6,751	295,291	1,089,259			49.51	1.13	43.74	
2001	5,999	6,810	247,361	1,095,101			41.23	1.14	36.32	
2002	6,050	6,895	233,353	1,125,073			38.57	1.14	33.84	
2003	6,834	7,777	257,112	1,282,302			37.62	1.14	33.06	
2004	5,953	6,751	157,846	1,072,035			26.52	1.13	23.38	
2005	5,808	6,565	143,653	1,024,433			24.73	1.13	21.88	
2006	9,387	10,658	187,189	1,488,309			19.94	1.14	17.56	
2007	6,746	7,597	121,534	1,004,315			18.02	1.13	16.00	
2008	9,349	10,442	157,881	1,324,160			16.89	1.12	15.12	
2009	6,702	7,518	108,428	927,015			16.18	1.12	14.42	
2010	3,758	4,278	62,914	512,764			16.74	1.14	14.71	
2011	2,964	3,336	48,286	395,608			16.29	1.13	14.47	
2012	2,074	2,311	31,528	267,355			15.20	1.11	13.64	
2013	717	769	10,699	87,737			14.92	1.07	13.91	

	Users*	Dispensings	Days Supplied	Amount Supplied	Eligible Members**	Member-Years**	Days Supplied per user	Dispensings per User	Days Supplied per Dispensing	Users per 1K Eligible Members
5 to 9 Years	125,365	161,212	2,889,368	25,005,396	10,477,293	19,855,060	23.05	1.29	17.92	11.97
2000	8,329	9,449	350,300	1,641,509			42.06	1.13	37.07	
2001	8,374	9,490	299,874	1,650,842			35.81	1.13	31.60	
2002	8,132	9,147	274,266	1,594,875			33.73	1.12	29.98	
2003	9,328	10,364	299,955	1,846,941			32.16	1.11	28.94	
2004	7,500	8,440	156,348	1,450,304			20.85	1.13	18.52	
2005	9,214	10,371	187,938	1,786,472			20.40	1.13	18.12	
2006	14,381	16,099	232,023	2,535,247			16.13	1.12	14.41	
2007	11,982	13,411	176,088	2,028,340			14.70	1.12	13.13	
2008	19,064	21,180	258,481	3,147,650			13.56	1.11	12.20	
2009	17,832	20,044	240,902	2,807,285			13.51	1.12	12.02	
2010	10,554	11,852	148,541	1,636,900			14.07	1.12	12.53	
2011	9,399	10,447	130,739	1,422,129			13.91	1.11	12.51	
2012	6,959	7,729	95,524	1,031,055			13.73	1.11	12.36	
2013	3,015	3,189	38,389	425,847			12.73	1.06	12.04	
10 to 17 Years	223,235	282,112	3,622,912	48,350,886	15,005,187	33,943,372	16.23	1.26	12.84	14.88
2000	9,578	10,784	320,648	2,030,076			33.48	1.13	29.73	
2001	10,457	11,730	305,509	2,178,205			29.22	1.12	26.05	
2002	10,992	12,294	312,061	2,298,801			28.39	1.12	25.38	
2003	13,749	15,350	358,897	2,936,117			26.10	1.12	23.38	
2004	9,123	10,145	136,162	1,896,815			14.93	1.11	13.42	
2005	12,246	13,694	183,273	2,564,171			14.97	1.12	13.38	
2006	21,323	23,532	262,241	4,195,555			12.30	1.10	11.14	
2007	16,454	18,195	182,956	3,115,843			11.12	1.11	10.06	
2008	33,639	37,312	349,720	6,143,775			10.40	1.11	9.37	
2009	43,210	48,147	441,997	8,001,331			10.23	1.11	9.18	
2010	23,885	26,672	256,208	4,350,170			10.73	1.12	9.61	
2011	22,799	25,295	239,362	4,074,755			10.50	1.11	9.46	
2012	17,670	19,477	182,749	3,067,598			10.34	1.10	9.38	
2013	8,996	9,485	91,129	1,497,674			10.13	1.05	9.61	

	Users*	Dispensings	Days Supplied	Amount Supplied	Eligible Members**	Member-Years**	Days Supplied per user	Dispensings per User	Days Supplied per Dispensing	Users per 1K Eligible Members
18 to 44 Years	1,367,453	1,897,675	19,002,539	355,818,661	54,077,095	116,008,745	13.90	1.39	10.01	25.29
2000	50,253	60,304	1,148,921	12,198,776			22.86	1.20	19.05	
2001	52,739	62,718	1,185,664	12,820,337			22.48	1.19	18.90	
2002	48,988	58,310	1,074,729	12,010,153			21.94	1.19	18.43	
2003	55,109	65,537	1,112,985	13,609,745			20.20	1.19	16.98	
2004	45,632	54,639	522,917	11,358,846			11.46	1.20	9.57	
2005	59,678	70,573	679,411	14,831,933			11.38	1.18	9.63	
2006	102,932	121,137	1,087,347	24,528,238			10.56	1.18	8.98	
2007	88,550	104,229	903,812	20,609,968			10.21	1.18	8.67	
2008	248,677	289,580	2,455,495	53,352,531			9.87	1.16	8.48	
2009	259,735	305,370	2,602,623	55,691,496			10.02	1.18	8.52	
2010	189,285	222,045	1,941,831	39,971,151			10.26	1.17	8.75	
2011	185,064	215,955	1,910,387	38,217,434			10.32	1.17	8.85	
2012	154,832	180,100	1,601,601	31,445,725			10.34	1.16	8.89	
2013	79,661	87,178	774,816	15,172,328			9.73	1.09	8.89	
45 to 64 Years	1,139,677	1,939,825	19,620,482	382,361,914	31,931,924	86,087,673	17.22	1.70	10.11	35.69
2000	42,538	57,918	1,127,142	12,169,971			26.50	1.36	19.46	
2001	44,653	60,223	1,148,012	12,714,562			25.71	1.35	19.06	
2002	43,715	59,364	1,120,699	12,650,502			25.64	1.36	18.88	
2003	48,029	65,362	1,109,786	14,087,887			23.11	1.36	16.98	
2004	45,195	61,825	598,146	13,473,122			13.23	1.37	9.67	
2005	56,360	76,122	731,696	16,798,696			12.98	1.35	9.61	
2006	95,395	126,850	1,142,160	26,997,446			11.97	1.33	9.00	
2007	82,281	109,770	954,911	22,762,901			11.61	1.33	8.70	
2008	215,853	280,327	2,411,284	54,171,049			11.17	1.30	8.60	
2009	215,548	282,223	2,456,599	54,350,618			11.40	1.31	8.70	
2010	181,430	235,926	2,088,628	44,861,341			11.51	1.30	8.85	
2011	176,794	227,846	2,049,420	42,695,362			11.59	1.29	8.99	
2012	153,525	195,528	1,779,206	36,224,668			11.59	1.27	9.10	
2013	86,666	100,541	902,793	18,403,789			10.42	1.16	8.98	

	Users*	Dispensings	Days Supplied	Amount Supplied	Eligible Members**	Member-Years**	Days Supplied per user	Dispensings per User	Days Supplied per Dispensing	Users per 1K Eligible Members
65+ Years	285,354	570,775	6,629,049	119,186,410	9,737,147	31,273,211	23.23	2.00	11.61	29.31
2000	19,504	29,615	617,584	6,570,465			31.66	1.52	20.85	
2001	21,316	32,621	662,130	7,277,378			31.06	1.53	20.30	
2002	21,401	32,672	641,611	7,323,965			29.98	1.53	19.64	
2003	22,970	34,877	633,407	7,837,211			27.58	1.52	18.16	
2004	21,697	33,213	338,819	7,602,378			15.62	1.53	10.20	
2005	25,348	37,952	380,708	8,766,328			15.02	1.50	10.03	
2006	27,633	41,435	402,264	9,555,468			14.56	1.50	9.71	
2007	18,868	26,896	248,489	5,798,766			13.17	1.43	9.24	
2008	43,117	60,361	526,154	11,847,517			12.20	1.40	8.72	
2009	41,997	59,362	525,850	11,636,560			12.52	1.41	8.86	
2010	39,938	55,991	502,793	10,882,211			12.59	1.40	8.98	
2011	38,285	53,212	486,457	10,307,643			12.71	1.39	9.14	
2012	35,665	49,046	451,118	9,406,159			12.65	1.38	9.20	
2013	19,570	23,522	211,665	4,374,361			10.82	1.20	9.00	

*The number of prevalent promethazine users by year will add up to more than the total because the same individual may be a promethazine user in more than one year.

**Denominator data are not available within each individual age group-year strata.

Table 5b. Summary of Incident Promethazine Use in the Mni-Sentinel Distributed Database (MSDD) between January 1, 2000 and May 31, 2013, by Drug Product, Age Group, and Year

	New Users	Dispensings	Days Supplied	Amount Supplied	Eligible Members*	Member-Years*	Days Supplied	Dispensings per User	Days Supplied	New Users per 1K Eligible
Promethazine (Liquid Only)										
0 to 5 Months	16	16	96	1,253	531,171	1,840	6.00	1.00	6.00	0.03
2000	1	1	7	120			7.00	1.00	7.00	
2001	1	1	3	90			3.00	1.00	3.00	
2002	3	3	16	180			5.33	1.00	5.33	
2003	2	2	8	180			4.00	1.00	4.00	
2004	0	0	0	0			---	---	---	
2005	3	3	29	183			9.67	1.00	9.67	
2006	1	1	3	30			3.00	1.00	3.00	
2007	0	0	0	0			---	---	---	
2008	3	3	21	260			7.00	1.00	7.00	
2009	1	1	5	150			5.00	1.00	5.00	
2010	0	0	0	0			---	---	---	
2011	1	1	4	60			4.00	1.00	4.00	
2012	0	0	0	0			---	---	---	
2013	0	0	0	0			---	---	---	
6 to 11 Months	4,093	4,146	39,135	395,640	2,780,844	1,255,937	9.56	1.01	9.44	1.47
2000	279	281	2,547	27,338			9.13	1.01	9.06	
2001	713	715	6,844	67,595			9.60	1.00	9.57	
2002	734	750	7,831	72,147			10.67	1.02	10.44	
2003	751	751	7,312	69,118			9.74	1.00	9.74	
2004	483	500	5,302	54,240			10.98	1.04	10.60	
2005	436	446	3,619	44,097			8.30	1.02	8.11	
2006	208	212	1,614	18,307			7.76	1.02	7.61	
2007	124	124	892	10,430			7.19	1.00	7.19	
2008	119	121	997	11,485			8.38	1.02	8.24	
2009	91	91	774	8,321			8.51	1.00	8.51	
2010	73	73	687	6,550			9.41	1.00	9.41	
2011	51	51	426	3,657			8.35	1.00	8.35	
2012	19	19	175	1,467			9.21	1.00	9.21	
2013	12	12	115	888			9.58	1.00	9.58	

	New Users	Dispensings	Days Supplied	Amount Supplied	Eligible Members*	Member-Years*	Days Supplied	Dispensings per User	Days Supplied	New Users per 1K Eligible
12 to 23 Months	10,182	10,263	94,680	1,128,880	3,538,569	2,745,433	9.30	1.01	9.23	2.88
2000	597	598	6,415	66,466			10.75	1.00	10.73	
2001	1,480	1,487	16,796	158,863			11.35	1.00	11.30	
2002	1,589	1,600	17,095	171,847			10.76	1.01	10.68	
2003	1,461	1,473	14,385	152,980			9.85	1.01	9.77	
2004	866	888	8,096	173,822			9.35	1.03	9.12	
2005	912	924	6,797	93,064			7.45	1.01	7.36	
2006	661	672	4,883	65,618			7.39	1.02	7.27	
2007	467	471	3,314	46,063			7.10	1.01	7.04	
2008	545	546	4,254	52,889			7.81	1.00	7.79	
2009	525	525	3,952	47,311			7.53	1.00	7.53	
2010	511	511	3,962	48,126			7.75	1.00	7.75	
2011	343	343	2,807	31,657			8.18	1.00	8.18	
2012	171	171	1,571	15,486			9.19	1.00	9.19	
2013	54	54	353	4,688			6.54	1.00	6.54	
2 to 4 Years	56,233	56,541	420,261	6,127,621	6,000,192	8,903,735	7.47	1.01	7.43	9.37
2000	1,805	1,813	18,570	198,562			10.29	1.00	10.24	
2001	4,085	4,110	37,555	433,439			9.19	1.01	9.14	
2002	3,580	3,628	32,403	411,178			9.05	1.01	8.93	
2003	3,628	3,650	32,118	408,137			8.85	1.01	8.80	
2004	2,064	2,137	16,452	309,855			7.97	1.04	7.70	
2005	3,203	3,241	20,608	359,481			6.43	1.01	6.36	
2006	3,752	3,783	25,604	415,815			6.82	1.01	6.77	
2007	4,396	4,415	29,916	485,185			6.81	1.00	6.78	
2008	5,817	5,850	40,382	619,411			6.94	1.01	6.90	
2009	6,899	6,910	51,508	730,525			7.47	1.00	7.45	
2010	6,011	6,011	41,716	657,015			6.94	1.00	6.94	
2011	5,584	5,584	37,963	559,760			6.80	1.00	6.80	
2012	4,507	4,507	29,259	447,702			6.49	1.00	6.49	
2013	902	902	6,207	91,556			6.88	1.00	6.88	

	New Users	Dispensings	Days Supplied	Amount Supplied	Eligible Members*	Member-Years*	Days Supplied	Dispensings per User	Days Supplied	New Users per 1K Eligible
5 to 9 Years	81,375	81,789	518,813	10,100,736	8,577,752	15,690,255	6.38	1.01	6.34	9.49
2000	2,483	2,492	20,026	287,932			8.07	1.00	8.04	
2001	5,524	5,561	43,575	641,884			7.89	1.01	7.84	
2002	4,608	4,668	37,208	593,496			8.07	1.01	7.97	
2003	4,283	4,309	31,599	571,482			7.38	1.01	7.33	
2004	2,113	2,181	14,267	431,211			6.75	1.03	6.54	
2005	3,920	3,993	22,816	500,319			5.82	1.02	5.71	
2006	4,569	4,625	27,995	596,464			6.13	1.01	6.05	
2007	6,084	6,114	37,104	803,723			6.10	1.00	6.07	
2008	8,373	8,420	50,892	1,039,405			6.08	1.01	6.04	
2009	10,803	10,807	65,801	1,316,520			6.09	1.00	6.09	
2010	9,610	9,610	57,259	1,116,907			5.96	1.00	5.96	
2011	8,835	8,839	52,375	1,032,059			5.93	1.00	5.93	
2012	8,430	8,430	47,713	960,041			5.66	1.00	5.66	
2013	1,740	1,740	10,183	209,293			5.85	1.00	5.85	
10 to 17 Years	35,344	35,485	236,169	5,440,048	12,438,283	27,248,480	6.68	1.00	6.66	2.84
2000	1,161	1,169	10,437	153,944			8.99	1.01	8.93	
2001	2,518	2,533	21,470	352,162			8.53	1.01	8.48	
2002	2,136	2,155	16,597	331,498			7.77	1.01	7.70	
2003	2,144	2,158	16,955	344,314			7.91	1.01	7.86	
2004	949	976	6,500	198,514			6.85	1.03	6.66	
2005	1,587	1,617	9,170	242,907			5.78	1.02	5.67	
2006	1,912	1,920	11,948	309,166			6.25	1.00	6.22	
2007	2,583	2,592	16,407	410,168			6.35	1.00	6.33	
2008	3,507	3,514	21,689	542,399			6.18	1.00	6.17	
2009	5,059	5,062	31,830	776,270			6.29	1.00	6.29	
2010	3,970	3,970	24,519	605,256			6.18	1.00	6.18	
2011	3,810	3,810	23,675	578,132			6.21	1.00	6.21	
2012	3,181	3,182	19,244	469,239			6.05	1.00	6.05	
2013	827	827	5,728	126,079			6.93	1.00	6.93	

	New Users	Dispensings	Days Supplied	Amount Supplied	Eligible Members*	Member-Years*	Days Supplied	Dispensings per User	Days Supplied	New Users per 1K Eligible
18 to 44 Years	64,080	64,205	606,610	12,837,059	43,096,298	87,858,484	9.47	1.00	9.45	1.49
2000	2,025	2,031	30,277	362,041			14.95	1.00	14.91	
2001	4,158	4,175	63,853	753,965			15.36	1.00	15.29	
2002	3,312	3,323	55,951	627,600			16.89	1.00	16.84	
2003	2,945	2,950	44,005	562,280			14.94	1.00	14.92	
2004	1,954	1,992	16,358	444,980			8.37	1.02	8.21	
2005	2,142	2,169	16,485	492,262			7.70	1.01	7.60	
2006	3,007	3,011	21,988	647,895			7.31	1.00	7.30	
2007	4,261	4,267	31,695	887,978			7.44	1.00	7.43	
2008	7,241	7,248	53,157	1,452,676			7.34	1.00	7.33	
2009	9,492	9,493	76,561	1,998,269			8.07	1.00	8.06	
2010	7,310	7,312	59,294	1,435,513			8.11	1.00	8.11	
2011	7,349	7,350	61,012	1,462,683			8.30	1.00	8.30	
2012	6,394	6,394	54,050	1,238,693			8.45	1.00	8.45	
2013	2,490	2,490	21,924	470,224			8.80	1.00	8.80	
45 to 64 Years	56,293	56,352	584,529	11,643,879	27,160,322	70,507,443	10.38	1.00	10.37	2.07
2000	1,792	1,794	29,634	342,723			16.54	1.00	16.52	
2001	3,472	3,477	64,114	687,618			18.47	1.00	18.44	
2002	2,604	2,612	52,188	536,409			20.04	1.00	19.98	
2003	2,403	2,407	44,819	501,274			18.65	1.00	18.62	
2004	1,547	1,565	13,790	407,403			8.91	1.01	8.81	
2005	1,699	1,715	14,268	410,888			8.40	1.01	8.32	
2006	2,488	2,489	19,425	563,648			7.81	1.00	7.80	
2007	3,841	3,842	30,122	841,748			7.84	1.00	7.84	
2008	7,000	7,003	56,199	1,437,878			8.03	1.00	8.02	
2009	8,333	8,334	71,462	1,688,007			8.58	1.00	8.57	
2010	6,555	6,555	57,054	1,321,875			8.70	1.00	8.70	
2011	6,550	6,550	58,164	1,306,049			8.88	1.00	8.88	
2012	5,532	5,532	50,397	1,109,705			9.11	1.00	9.11	
2013	2,477	2,477	22,893	488,654			9.24	1.00	9.24	

	New Users	Dispensings	Days Supplied	Amount Supplied	Eligible Members*	Member-Years*	Days Supplied	Dispensings per User	Days Supplied	New Users per 1K Eligible
65+ Years	27,278	27,308	321,335	5,680,340	8,671,238	26,833,623	11.78	1.00	11.77	3.15
2000	953	955	18,037	192,035			18.93	1.00	18.89	
2001	1,978	1,982	41,732	414,485			21.10	1.00	21.06	
2002	1,581	1,583	36,181	333,322			22.88	1.00	22.86	
2003	1,396	1,399	30,980	299,124			22.19	1.00	22.14	
2004	988	995	9,701	225,816			9.82	1.01	9.75	
2005	970	981	8,175	228,730			8.43	1.01	8.33	
2006	1,342	1,342	11,128	295,076			8.29	1.00	8.29	
2007	1,836	1,836	16,103	393,375			8.77	1.00	8.77	
2008	3,754	3,754	33,401	771,776			8.90	1.00	8.90	
2009	3,491	3,491	31,451	711,219			9.01	1.00	9.01	
2010	3,531	3,532	32,390	710,431			9.17	1.00	9.17	
2011	3,049	3,049	28,072	601,155			9.21	1.00	9.21	
2012	1,797	1,797	17,884	381,245			9.95	1.00	9.95	
2013	612	612	6,100	122,551			9.97	1.00	9.97	
Promethazine (Tablet Only)										
0 to 5 Months	6	6	22	71	531,171	1,840	3.67	1.00	3.67	0.01
2000	0	0	0	0			---	---	---	
2001	0	0	0	0			---	---	---	
2002	0	0	0	0			---	---	---	
2003	1	1	2	5			2.00	1.00	2.00	
2004	0	0	0	0			---	---	---	
2005	0	0	0	0			---	---	---	
2006	0	0	0	0			---	---	---	
2007	2	2	7	22			3.50	1.00	3.50	
2008	2	2	3	14			1.50	1.00	1.50	
2009	0	0	0	0			---	---	---	
2010	0	0	0	0			---	---	---	
2011	0	0	0	0			---	---	---	
2012	0	0	0	0			---	---	---	
2013	1	1	10	30			10.00	1.00	10.00	

	New Users	Dispensings	Days Supplied	Amount Supplied	Eligible Members*	Member-Years*	Days Supplied	Dispensings per User	Days Supplied	New Users per 1K Eligible
6 to 11 Months	274	275	980	2,992	2,780,844	1,255,937	3.58	1.00	3.56	0.10
2000	1	1	1	3			1.00	1.00	1.00	
2001	11	11	29	137			2.64	1.00	2.64	
2002	13	13	41	152			3.15	1.00	3.15	
2003	24	24	76	352			3.17	1.00	3.17	
2004	31	31	127	416			4.10	1.00	4.10	
2005	75	75	221	694			2.95	1.00	2.95	
2006	24	24	82	174			3.42	1.00	3.42	
2007	27	27	129	333			4.78	1.00	4.78	
2008	23	23	101	343			4.39	1.00	4.39	
2009	14	14	54	116			3.86	1.00	3.86	
2010	13	14	51	120			3.92	1.08	3.64	
2011	15	15	45	109			3.00	1.00	3.00	
2012	1	1	1	10			1.00	1.00	1.00	
2013	2	2	22	33			11.00	1.00	11.00	
12 to 23 Months	873	884	3,232	8,070	3,540,787	2,748,314	3.70	1.01	3.66	0.25
2000	11	11	42	112			3.82	1.00	3.82	
2001	39	39	133	473			3.41	1.00	3.41	
2002	31	31	188	567			6.06	1.00	6.06	
2003	57	57	248	557			4.35	1.00	4.35	
2004	74	75	342	887			4.62	1.01	4.56	
2005	179	181	610	1,962			3.41	1.01	3.37	
2006	92	93	358	695			3.89	1.01	3.85	
2007	74	76	270	590			3.65	1.03	3.55	
2008	96	98	328	923			3.42	1.02	3.35	
2009	73	74	264	411			3.62	1.01	3.57	
2010	53	54	142	226			2.68	1.02	2.63	
2011	76	77	237	517			3.12	1.01	3.08	
2012	15	15	60	113			4.00	1.00	4.00	
2013	3	3	10	37			3.33	1.00	3.33	

	New Users	Dispensings	Days Supplied	Amount Supplied	Eligible Members*	Member-Years*	Days Supplied	Dispensings per User	Days Supplied	New Users per 1K Eligible
2 to 4 Years	8,300	8,404	29,701	1,715,039	6,009,594	8,963,867	3.58	1.01	3.53	1.38
2000	66	66	236	784			3.58	1.00	3.58	
2001	170	174	855	2,261			5.03	1.02	4.91	
2002	229	229	858	2,212			3.75	1.00	3.75	
2003	267	272	988	2,633			3.70	1.02	3.63	
2004	249	260	1,085	2,777			4.36	1.04	4.17	
2005	572	589	2,088	5,627			3.65	1.03	3.54	
2006	534	543	2,027	4,711			3.80	1.02	3.73	
2007	845	851	2,660	1,652,543			3.15	1.01	3.13	
2008	933	954	3,362	8,773			3.60	1.02	3.52	
2009	948	956	3,505	11,591			3.70	1.01	3.67	
2010	790	795	2,900	6,342			3.67	1.01	3.65	
2011	1,553	1,564	4,851	8,555			3.12	1.01	3.10	
2012	1,075	1,082	3,926	5,558			3.65	1.01	3.63	
2013	69	69	360	672			5.22	1.00	5.22	
5 to 9 Years	45,332	45,754	197,083	3,358,754	8,620,658	15,882,301	4.35	1.01	4.31	5.26
2000	786	788	3,473	11,074			4.42	1.00	4.41	
2001	1,990	2,009	8,237	26,680			4.14	1.01	4.10	
2002	2,061	2,084	8,680	26,146			4.21	1.01	4.17	
2003	2,308	2,346	9,428	29,640			4.08	1.02	4.02	
2004	1,234	1,262	6,497	56,898			5.26	1.02	5.15	
2005	2,628	2,727	11,482	32,532			4.37	1.04	4.21	
2006	2,960	3,028	13,332	36,720			4.50	1.02	4.40	
2007	4,126	4,198	17,056	1,797,295			4.13	1.02	4.06	
2008	5,236	5,265	22,694	1,066,340			4.33	1.01	4.31	
2009	5,793	5,809	26,682	78,835			4.61	1.00	4.59	
2010	5,114	5,123	23,149	64,420			4.53	1.00	4.52	
2011	5,846	5,860	23,717	67,846			4.06	1.00	4.05	
2012	4,605	4,610	19,211	54,043			4.17	1.00	4.17	
2013	645	645	3,445	10,285			5.34	1.00	5.34	



	New Users	Dispensings	Days Supplied	Amount Supplied	Eligible Members*	Member-Years*	Days Supplied	Dispensings per User	Days Supplied	New Users per 1K Eligible
10 to 17 Years	301,647	302,872	1,348,909	8,001,654	12,471,673	27,067,435	4.47	1.00	4.45	24.19
2000	5,364	5,373	22,521	84,356			4.20	1.00	4.19	
2001	11,613	11,792	48,941	180,854			4.21	1.02	4.15	
2002	11,755	11,818	50,764	178,717			4.32	1.01	4.30	
2003	11,788	11,880	50,796	180,768			4.31	1.01	4.28	
2004	6,947	7,065	36,533	178,795			5.26	1.02	5.17	
2005	12,581	12,780	55,398	199,570			4.40	1.02	4.33	
2006	17,522	17,717	81,805	298,018			4.67	1.01	4.62	
2007	23,488	23,707	105,409	3,392,393			4.49	1.01	4.45	
2008	35,235	35,323	155,650	571,377			4.42	1.00	4.41	
2009	47,668	47,690	218,114	790,132			4.58	1.00	4.57	
2010	40,789	40,803	179,556	667,868			4.40	1.00	4.40	
2011	37,071	37,083	163,582	610,850			4.41	1.00	4.41	
2012	32,553	32,566	144,923	539,208			4.45	1.00	4.45	
2013	7,273	7,275	34,917	128,748			4.80	1.00	4.80	
18 to 44 Years	1,624,315	1,627,672	8,637,516	35,473,893	42,956,479	85,118,175	5.32	1.00	5.31	37.81
2000	27,732	27,804	143,495	544,960			5.17	1.00	5.16	
2001	56,244	57,318	298,834	1,092,550			5.31	1.02	5.21	
2002	53,003	53,197	286,955	1,023,905			5.41	1.00	5.39	
2003	46,769	46,952	255,251	918,136			5.46	1.00	5.44	
2004	37,473	37,804	240,586	1,281,725			6.42	1.01	6.36	
2005	48,781	49,187	282,088	1,045,823			5.78	1.01	5.74	
2006	85,800	86,155	502,023	1,943,553			5.85	1.00	5.83	
2007	124,721	125,166	684,027	3,696,526			5.48	1.00	5.46	
2008	205,795	205,936	1,064,360	5,106,760			5.17	1.00	5.17	
2009	269,300	269,351	1,410,576	5,347,018			5.24	1.00	5.24	
2010	235,072	235,103	1,209,392	4,673,907			5.14	1.00	5.14	
2011	203,329	203,362	1,046,946	4,097,263			5.15	1.00	5.15	
2012	177,565	177,599	934,289	3,626,250			5.26	1.00	5.26	
2013	52,731	52,738	278,694	1,075,517			5.29	1.00	5.28	



	New Users	Dispensings	Days Supplied	Amount Supplied	Eligible Members*	Member-Years*	Days Supplied	Dispensings per User	Days Supplied	New Users per 1K Eligible
45 to 64 Years	998,277	999,518	6,072,090	22,817,271	27,018,951	68,652,665	6.08	1.00	6.08	36.95
2000	12,652	12,689	79,194	286,094			6.26	1.00	6.24	
2001	25,990	26,313	165,868	577,414			6.38	1.01	6.30	
2002	25,447	25,546	163,224	569,957			6.41	1.00	6.39	
2003	24,302	24,391	159,236	547,315			6.55	1.00	6.53	
2004	21,277	21,486	162,418	756,427			7.63	1.01	7.56	
2005	25,363	25,532	178,461	620,888			7.04	1.01	6.99	
2006	47,194	47,269	322,862	1,211,363			6.84	1.00	6.83	
2007	73,716	73,784	458,326	1,758,945			6.22	1.00	6.21	
2008	132,114	132,164	784,371	2,930,864			5.94	1.00	5.93	
2009	171,751	171,779	1,024,842	3,794,548			5.97	1.00	5.97	
2010	154,071	154,097	897,518	3,386,258			5.83	1.00	5.82	
2011	135,280	135,306	795,967	3,036,939			5.88	1.00	5.88	
2012	113,181	113,214	669,869	2,540,131			5.92	1.00	5.92	
2013	35,939	35,948	209,934	800,128			5.84	1.00	5.84	
65+ Years	305,345	305,944	2,117,237	7,354,435	8,609,311	26,208,878	6.93	1.00	6.92	35.47
2000	5,615	5,638	43,026	123,207			7.66	1.00	7.63	
2001	11,728	11,836	85,300	251,907			7.27	1.01	7.21	
2002	11,966	12,042	87,665	253,799			7.33	1.01	7.28	
2003	11,721	11,769	88,617	256,158			7.56	1.00	7.53	
2004	10,184	10,310	91,566	359,561			8.99	1.01	8.88	
2005	12,682	12,782	101,626	306,089			8.01	1.01	7.95	
2006	12,860	12,865	99,733	336,502			7.76	1.00	7.75	
2007	19,184	19,198	130,938	456,531			6.83	1.00	6.82	
2008	44,147	44,166	288,578	1,032,717			6.54	1.00	6.53	
2009	48,916	48,938	321,844	1,154,481			6.58	1.00	6.58	
2010	46,987	47,012	308,257	1,114,262			6.56	1.00	6.56	
2011	43,869	43,891	294,613	1,077,405			6.72	1.00	6.71	
2012	20,480	20,490	141,114	507,492			6.89	1.00	6.89	
2013	5,006	5,007	34,360	124,324			6.86	1.00	6.86	

	New Users	Dispensings	Days Supplied	Amount Supplied	Eligible Members*	Member-Years*	Days Supplied	Dispensings per User	Days Supplied	New Users per 1K Eligible
Promethazine/Codeine and Promethazine/Phenylephrine/Codeine										
0 to 5 Months	7	7	87	1,260	531,171	1,840	12.43	1.00	12.43	0.01
2000	0	0	0	0			---	---	---	
2001	0	0	0	0			---	---	---	
2002	0	0	0	0			---	---	---	
2003	0	0	0	0			---	---	---	
2004	0	0	0	0			---	---	---	
2005	0	0	0	0			---	---	---	
2006	2	2	28	480			14.00	1.00	14.00	
2007	2	2	30	180			15.00	1.00	15.00	
2008	0	0	0	0			---	---	---	
2009	0	0	0	0			---	---	---	
2010	1	1	12	180			12.00	1.00	12.00	
2011	1	1	12	120			12.00	1.00	12.00	
2012	1	1	5	300			5.00	1.00	5.00	
2013	0	0	0	0			---	---	---	
6 to 11 Months	1,162	1,168	32,872	161,997	2,780,844	1,255,936	28.29	1.01	28.14	0.42
2000	80	83	2,810	12,569			35.13	1.04	33.86	
2001	200	201	6,613	29,115			33.07	1.01	32.90	
2002	190	190	6,272	27,310			33.01	1.00	33.01	
2003	164	164	5,440	26,326			33.17	1.00	33.17	
2004	212	212	5,835	29,697			27.52	1.00	27.52	
2005	131	132	2,931	16,332			22.37	1.01	22.20	
2006	42	43	656	4,780			15.62	1.02	15.26	
2007	19	19	285	2,100			15.00	1.00	15.00	
2008	31	31	509	3,484			16.42	1.00	16.42	
2009	34	34	596	3,299			17.53	1.00	17.53	
2010	24	24	406	3,010			16.92	1.00	16.92	
2011	18	18	286	2,070			15.89	1.00	15.89	
2012	12	12	161	1,125			13.42	1.00	13.42	
2013	5	5	72	780			14.40	1.00	14.40	

	New Users	Dispensings	Days Supplied	Amount Supplied	Eligible Members*	Member-Years*	Days Supplied	Dispensings per User	Days Supplied	New Users per 1K Eligible
12 to 23 Months	6,473	6,487	194,758	923,531	3,540,303	2,747,561	30.09	1.00	30.02	1.83
2000	516	516	23,689	83,829			45.91	1.00	45.91	
2001	998	1,000	39,862	148,945			39.94	1.00	39.86	
2002	968	969	33,066	150,722			34.16	1.00	34.12	
2003	1,022	1,024	34,730	160,419			33.98	1.00	33.92	
2004	998	999	26,739	140,714			26.79	1.00	26.77	
2005	657	661	15,086	90,172			22.96	1.01	22.82	
2006	307	308	5,607	37,077			18.26	1.00	18.20	
2007	146	147	2,696	17,195			18.47	1.01	18.34	
2008	191	191	3,066	22,375			16.05	1.00	16.05	
2009	223	225	3,315	24,036			14.87	1.01	14.73	
2010	161	161	2,535	18,305			15.75	1.00	15.75	
2011	151	151	2,395	15,764			15.86	1.00	15.86	
2012	105	105	1,519	10,860			14.47	1.00	14.47	
2013	30	30	453	3,118			15.10	1.00	15.10	
2 to 4 Years	50,696	50,748	1,174,403	7,152,459	6,005,275	8,924,359	23.17	1.00	23.14	8.44
2000	2,370	2,371	91,734	380,957			38.71	1.00	38.69	
2001	4,754	4,755	175,823	755,211			36.98	1.00	36.98	
2002	4,392	4,400	149,945	706,699			34.14	1.00	34.08	
2003	4,920	4,927	163,085	792,064			33.15	1.00	33.10	
2004	3,833	3,838	93,128	596,779			24.30	1.00	24.26	
2005	4,013	4,023	88,174	606,108			21.97	1.00	21.92	
2006	4,734	4,743	88,197	660,499			18.63	1.00	18.60	
2007	4,880	4,884	77,355	637,031			15.85	1.00	15.84	
2008	4,948	4,953	76,592	617,750			15.48	1.00	15.46	
2009	5,014	5,015	71,876	610,217			14.34	1.00	14.33	
2010	2,728	2,729	40,432	321,312			14.82	1.00	14.82	
2011	2,128	2,128	30,797	245,090			14.47	1.00	14.47	
2012	1,510	1,510	20,613	170,592			13.65	1.00	13.65	
2013	472	472	6,652	52,150			14.09	1.00	14.09	



	New Users	Dispensings	Days Supplied	Amount Supplied	Eligible Members*	Member-Years*	Days Supplied	Dispensings per User	Days Supplied	New Users per 1K Eligible
5 to 9 Years	90,172	90,260	1,597,252	13,687,472	8,585,079	15,684,573	17.71	1.00	17.70	10.50
2000	3,503	3,509	119,115	608,875			34.00	1.00	33.95	
2001	6,862	6,868	218,978	1,179,308			31.91	1.00	31.88	
2002	5,913	5,923	179,686	1,009,517			30.39	1.00	30.34	
2003	6,349	6,355	181,524	1,108,926			28.59	1.00	28.56	
2004	4,439	4,448	81,581	736,059			18.38	1.00	18.34	
2005	5,726	5,738	99,730	944,884			17.42	1.00	17.38	
2006	6,756	6,772	98,437	1,039,603			14.57	1.00	14.54	
2007	8,011	8,015	101,341	1,184,189			12.65	1.00	12.64	
2008	9,543	9,556	114,708	1,414,979			12.02	1.00	12.00	
2009	13,114	13,118	155,817	1,802,136			11.88	1.00	11.88	
2010	7,121	7,121	89,079	960,347			12.51	1.00	12.51	
2011	6,328	6,328	77,952	843,457			12.32	1.00	12.32	
2012	4,652	4,654	57,244	611,352			12.31	1.00	12.30	
2013	1,855	1,855	22,060	243,840			11.89	1.00	11.89	
10 to 17 Years	170,928	171,019	2,201,802	28,827,318	12,424,785	26,971,459	12.88	1.00	12.87	13.76
2000	4,141	4,147	111,278	782,162			26.87	1.00	26.83	
2001	9,071	9,075	239,811	1,666,803			26.44	1.00	26.43	
2002	8,801	8,811	223,534	1,627,793			25.40	1.00	25.37	
2003	10,554	10,558	247,958	2,001,942			23.49	1.00	23.49	
2004	6,013	6,014	82,150	1,112,360			13.66	1.00	13.66	
2005	8,492	8,503	111,524	1,554,371			13.13	1.00	13.12	
2006	10,535	10,544	123,134	1,873,512			11.69	1.00	11.68	
2007	11,848	11,858	116,363	1,990,152			9.82	1.00	9.81	
2008	17,220	17,240	160,862	2,795,920			9.34	1.00	9.33	
2009	33,259	33,269	303,726	5,394,498			9.13	1.00	9.13	
2010	16,712	16,714	159,473	2,666,799			9.54	1.00	9.54	
2011	15,963	15,967	150,574	2,530,726			9.43	1.00	9.43	
2012	12,398	12,398	114,470	1,909,993			9.23	1.00	9.23	
2013	5,921	5,921	56,945	920,287			9.62	1.00	9.62	



	New Users	Dispensings	Days Supplied	Amount Supplied	Eligible Members*	Member-Years*	Days Supplied	Dispensings per User	Days Supplied	New Users per 1K Eligible
18 to 44 Years	1,019,207	1,019,509	10,300,697	187,179,132	43,026,128	85,972,802	10.11	1.00	10.10	23.69
2000	19,849	19,854	380,230	4,022,376			19.16	1.00	19.15	
2001	42,272	42,284	801,924	8,585,950			18.97	1.00	18.97	
2002	35,952	35,980	670,064	7,331,663			18.64	1.00	18.62	
2003	39,166	39,183	676,353	8,069,443			17.27	1.00	17.26	
2004	29,367	29,388	286,888	6,038,196			9.77	1.00	9.76	
2005	38,906	38,937	375,395	8,037,108			9.65	1.00	9.64	
2006	50,344	50,383	458,563	10,180,940			9.11	1.00	9.10	
2007	59,375	59,405	518,145	11,360,814			8.73	1.00	8.72	
2008	118,014	118,057	1,003,900	21,544,721			8.51	1.00	8.50	
2009	187,647	187,689	1,606,950	33,422,945			8.56	1.00	8.56	
2010	126,965	126,980	1,113,270	22,202,747			8.77	1.00	8.77	
2011	121,951	121,959	1,080,388	21,037,429			8.86	1.00	8.86	
2012	100,857	100,865	897,601	17,082,408			8.90	1.00	8.90	
2013	48,542	48,545	431,026	8,262,392			8.88	1.00	8.88	
45 to 64 Years	902,290	902,453	9,157,809	170,161,947	27,013,327	68,229,014	10.15	1.00	10.15	33.40
2000	17,328	17,334	337,581	3,607,061			19.48	1.00	19.48	
2001	36,806	36,811	710,718	7,631,329			19.31	1.00	19.31	
2002	30,849	30,861	602,149	6,411,150			19.52	1.00	19.51	
2003	31,177	31,185	534,125	6,537,977			17.13	1.00	17.13	
2004	26,084	26,101	256,344	5,501,550			9.83	1.00	9.82	
2005	32,819	32,834	317,396	6,950,823			9.67	1.00	9.67	
2006	43,829	43,840	400,178	9,051,473			9.13	1.00	9.13	
2007	53,276	53,289	455,575	10,375,555			8.55	1.00	8.55	
2008	108,036	108,054	920,913	20,090,901			8.52	1.00	8.52	
2009	151,845	151,873	1,315,183	27,849,084			8.66	1.00	8.66	
2010	116,880	116,891	1,029,559	21,131,662			8.81	1.00	8.81	
2011	110,941	110,946	995,690	19,864,804			8.97	1.00	8.97	
2012	93,553	93,562	843,677	16,525,105			9.02	1.00	9.02	
2013	48,867	48,872	438,721	8,633,473			8.98	1.00	8.98	

	New Users	Dispensings	Days Supplied	Amount Supplied	Eligible Members*	Member-Years*	Days Supplied	Dispensings per User	Days Supplied	New Users per 1K Eligible
65+ Years	232,408	232,447	2,642,156	45,675,812	8,580,377	25,900,271	11.37	1.00	11.37	27.09
2000	8,081	8,083	168,500	1,770,075			20.85	1.00	20.85	
2001	17,005	17,006	349,822	3,702,646			20.57	1.00	20.57	
2002	14,079	14,080	277,134	3,022,253			19.68	1.00	19.68	
2003	13,740	13,744	254,184	2,971,633			18.50	1.00	18.49	
2004	11,427	11,437	111,451	2,493,200			9.75	1.00	9.74	
2005	12,975	12,981	125,378	2,819,513			9.66	1.00	9.66	
2006	11,659	11,660	110,194	2,565,101			9.45	1.00	9.45	
2007	8,406	8,406	73,549	1,642,894			8.75	1.00	8.75	
2008	26,309	26,310	220,881	4,866,223			8.40	1.00	8.40	
2009	29,571	29,574	254,334	5,460,379			8.60	1.00	8.60	
2010	25,498	25,504	222,367	4,679,250			8.72	1.00	8.72	
2011	22,920	22,922	202,085	4,167,809			8.82	1.00	8.82	
2012	20,731	20,733	183,128	3,730,568			8.83	1.00	8.83	
2013	10,007	10,007	89,149	1,784,268			8.91	1.00	8.91	

*Denominator data are not available within each individual age group-year strata.

Appendix A. Generic and Brand Name Drugs Included in this Request

Generic Name	Drug Form
PROMETHAZINE HCL	LIQUID
PROMETHAZINE HCL/CODEINE	LIQUID
PROMETHAZINE/PHENYLEPH/CODEINE	LIQUID
PROMETHAZINE HCL	TABLET

Appendix B. Modular Program Specifications for Request MPR_WP21_v01

Modular Program #9 was used to investigate prevalent and incident use of promethazine in the Mini-Sentinel Distributed Database (MSDD). In total, three different scenarios were examined in this report with differing exposures of interest. See below for a description of each of these scenarios.

Coverage Requirement	Drug and Medical Coverage
Query Period	January 1, 2000 to May 31, 2013
Enrollment Gap	45 Days
Age Stratifications	0-5mo, 6-11mo, 12-23mo, 2-4y, 5-9y, 10-17y, 18-44y, 45-64y, 65+

Drug/Exposure Criteria

Scenario	Exposure	Incident w/ respect to (incidence criteria) ⁴	Enrollment			Incidence Type
			Care Setting	Days	Washout (days)	
1	Promethazine, oral liquid only (non-codeine) ¹	All oral promethazine (includes liquid, tablet, and with codeine)	Any	0	183	SING
2	Promethazine, oral tablet only ²	All oral promethazine (includes liquid, tablet, and with codeine)	Any	0	183	SING
3	Promethazine/Codeine and Promethazine/Phenylephrine/Codeine ³	All oral promethazine (includes liquid, tablet, and with codeine)	Any	0	183	SING

National Drug Codes (NDCs) checked against First Data Bank's "National Drug Data File (NDDF®) Plus"
 International Classification of Diseases, Ninth Edition, Clinical Modification (ICD-9-CM) diagnosis and procedure codes checked against "Ingenix 2012 ICD-9-CM Data File" provided by OptumInsight
 Healthcare Common Procedure Coding System (HCPCS) codes checked against "Optum 2012 HCPCS Level II Data File" provided by OptumInsight
 Current Procedural Terminology, Fourth Revision (CPT-4) codes checked against "Optum 2012 Current Procedure Codes & Relative Values Data File" provided by OptumInsight

¹Includes oral formulations of promethazine with liquid as the drug form. See Appendix A for generic and brand names.

²Includes oral formulations of promethazine with tablet as the drug form. See Appendix A for generic and brand names.

³Includes oral formulations of promethazine/codeine and promethazine/phenylephrine/codeine. See Appendix A for generic and brand names.

⁴Includes all oral formulations of promethazine, promethazine/codeine, and promethazine/phenyleph/codeine. See Appendix A for generic and brand names.

Appendix C. Dates of Available Data for Each Data Partner up to Request End Date (May 31, 2013)

DP ID	Start Date	End Date
DP0001	1/2/2008	8/30/2013
DP0002	1/1/2000	6/30/2013
DP0003	6/30/2012	6/30/2012
DP0004	1/1/2000	8/30/2013
DP0005	1/1/2000	4/30/2012
DP0006	6/1/2007	4/30/2013
DP0007	1/1/2005	3/31/2013
DP0008	1/1/2008	3/31/2013
DP0009	1/1/2000	12/31/2012
DP0010	1/31/2000	6/30/2013
DP0011	1/2/2000	12/31/2011
DP0012	1/1/2000	5/31/2013
DP0013	1/2/2000	6/30/2012
DP0014	1/1/2000	5/31/2013
DP0015	1/31/2000	3/31/2013
DP0016	1/1/2000	12/31/2011
DP0017	1/1/2006	5/30/2013
DP0018	1/31/2004	8/30/2013